



OFFICE BUILDING FOR LEASE

CORPORATE LANDING MEDICAL CENTER

1232 PERIMETER PARKWAY, VIRGINIA BEACH, VA 23454



CORPORATE LANDING MEDICAL CENTER

1232 PERIMETER PARKWAY, VIRGINIA BEACH, VA 23454

PROPERTY OVERVIEW



OFFERING SUMMARY

Available SF: 498 - 3,482 SF

Lease Rate: \$24.00 SF/yr (Full Service)

Building Size: 20,000 SF

AVAILABLE SPACES **SF**

Suite 200 / 201 2,410 SF
(Available 8/1/25)

Suite 203 498 - 3,482 SF

Suite 205 2,984 - 3,482 SF

PROPERTY OVERVIEW

20,000-square-foot Class A brick and glass, medical office building. Current tenants include: Chesapeake Bay ENT, Aria Psychiatry, Cho Foot & Ankle Specialists, Chiropractor, The Therapy Network, First Colonial Psychotherapy, and Department of Veterans Services.

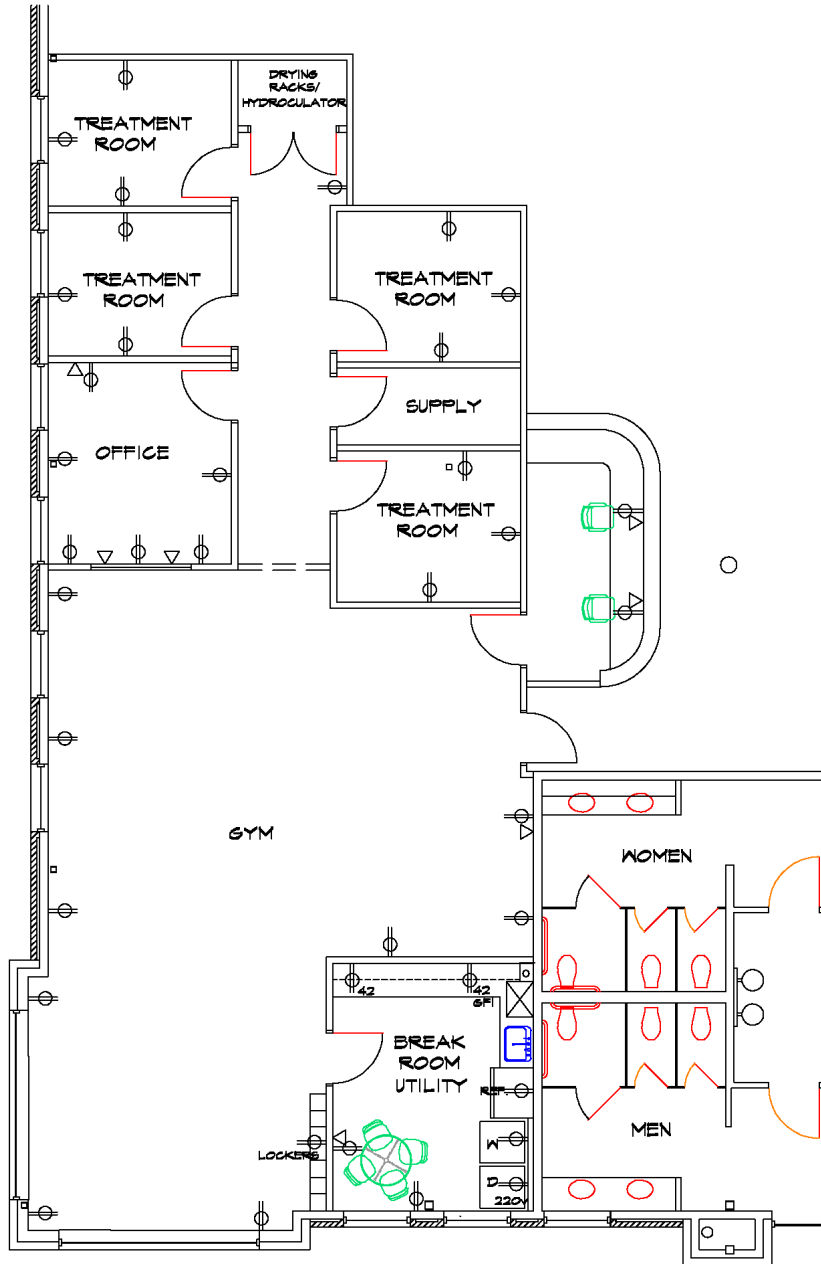
PROPERTY HIGHLIGHTS

- Located in certified Opportunity Zone
- Building Conference Room
- Common Employee Break Room
- X-Ray Facilities on premises
- No clinical restrictions on procedures or services

CORPORATE LANDING MEDICAL CENTER

1232 PERIMETER PARKWAY, VIRGINIA BEACH, VA 23454

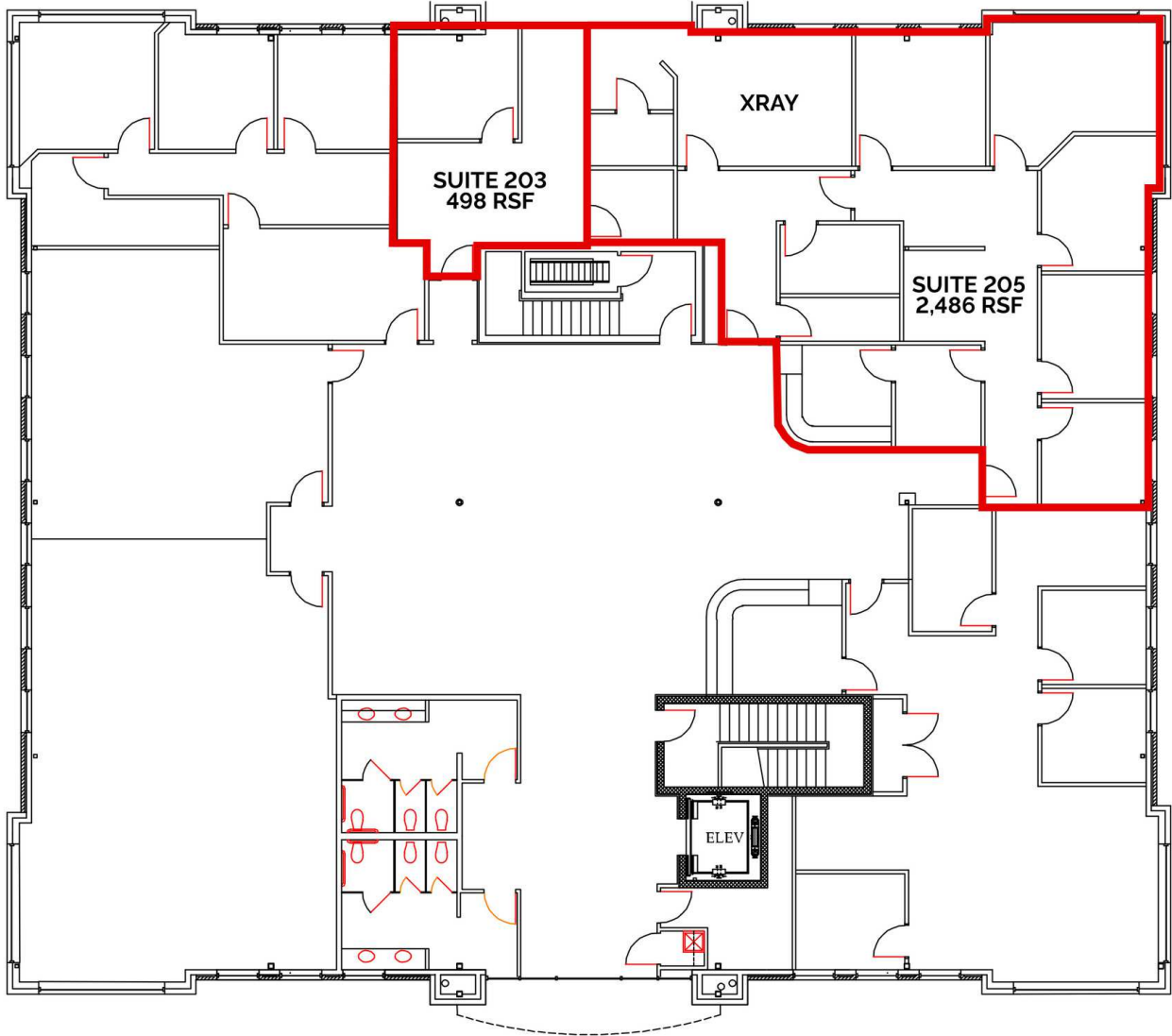
SUITE 200 / 201

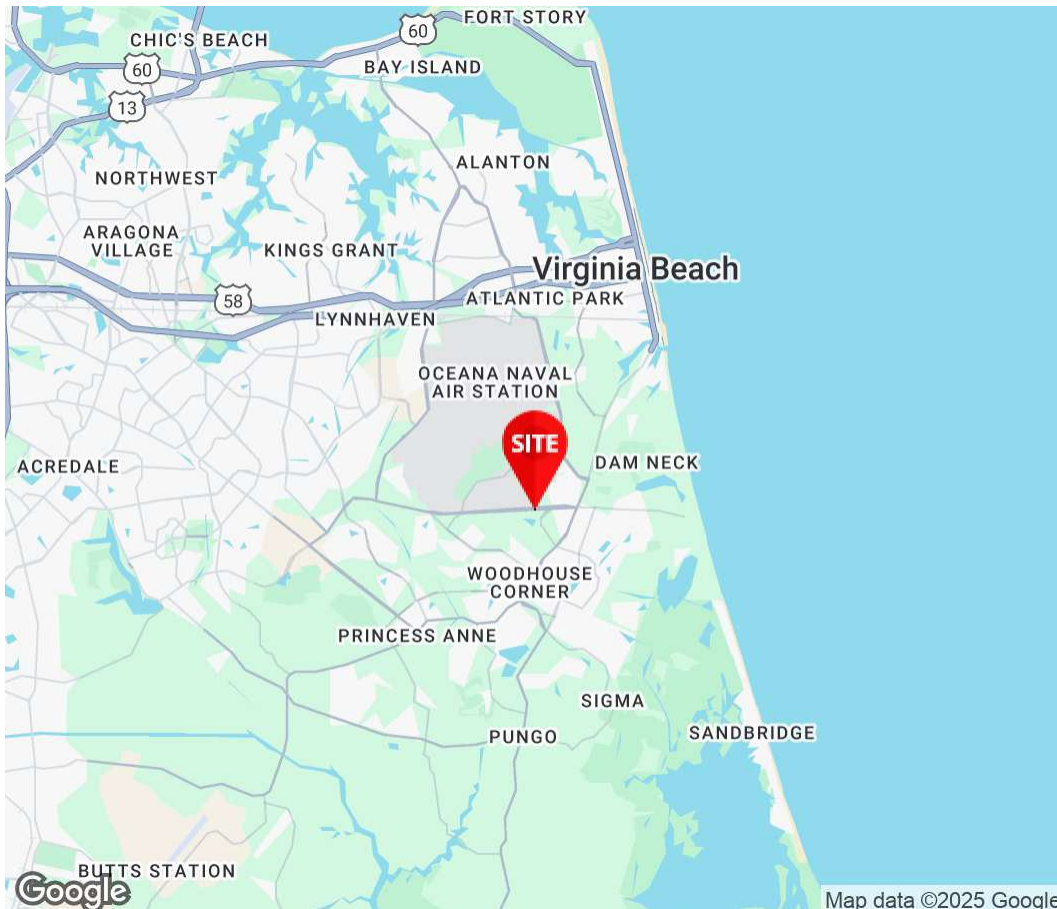
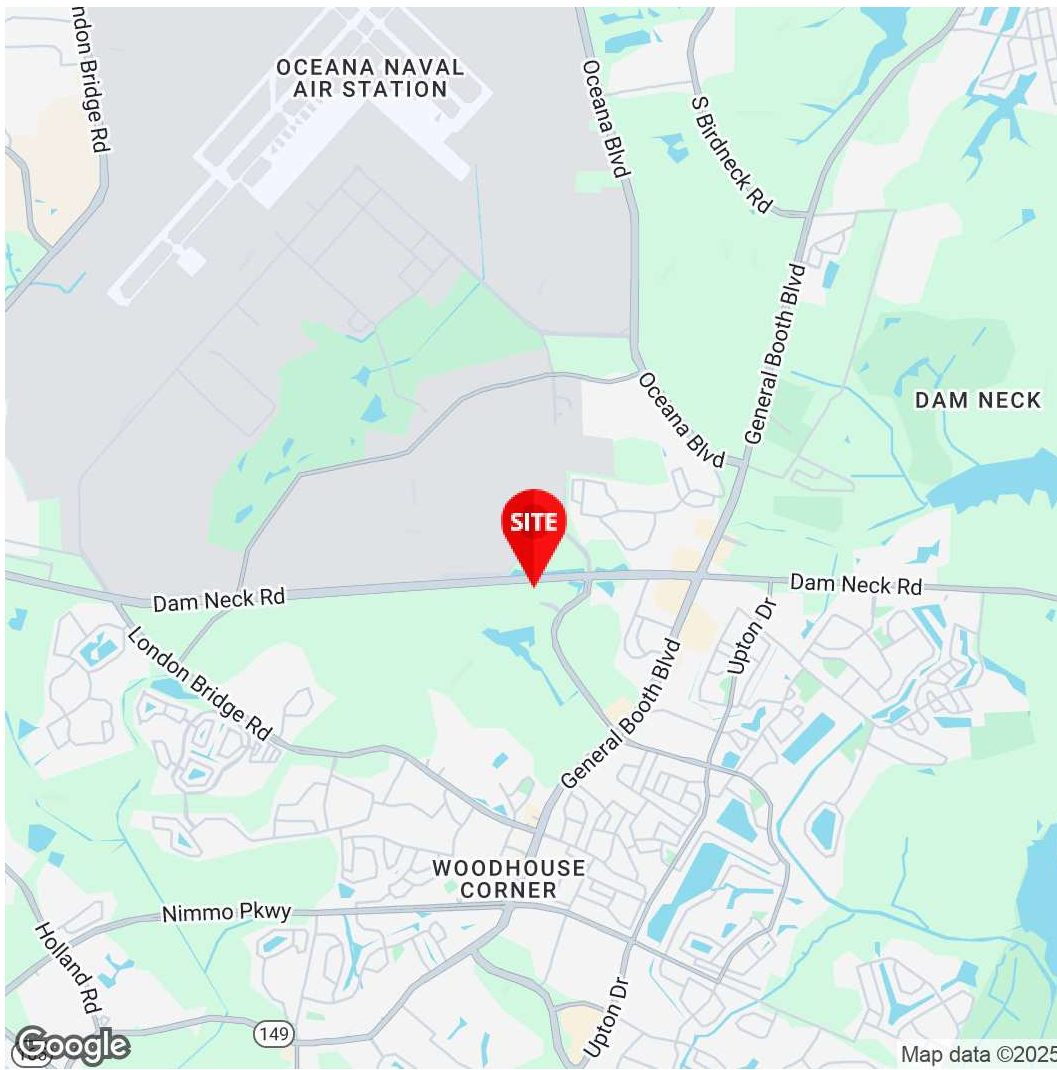


CORPORATE LANDING MEDICAL CENTER

1232 PERIMETER PARKWAY, VIRGINIA BEACH, VA 23454

SUITE 203 / 205





Krista Costa
 Executive Vice President
 757.333.4356
 Kcosta@Divaris.Com

The information contained herein should be considered confidential and remains the sole property of Divaris Real Estate, Inc. at all times. Although every effort has been made to ensure accuracy, no liability will be accepted for any errors or omissions. Disclosure of any information contained herein is prohibited except with the express written permission of Divaris Real Estate, Inc.