

CITY CENTRE

PLACE

CLASS A OFFICE FOR LEASE
400 S 4TH ST | LAS VEGAS, NV 89101

[CLICK HERE TO VIEW
PROPERTY VIDEO](#)


CUSHMAN &
WAKEFIELD

LUXURY MEETS LOCATION

For businesses seeking to locate in Las Vegas' civic core, City Centre Place is the ideal choice. With ample onsite parking and a location within walking distance of Las Vegas' numerous municipal, county, and federal government facilities, City Centre Place offers the best value and the most high-end office space in downtown.

AN ELEVATED EXPERIENCE



107,123 RSF TOTAL,
6 STORIES



SINGLE AND MULTI-
TENANT FLOORS



ONSITE SECURITY
SERVICE



4:1000 ATTACHED
PARKING GARAGE WITH
CONTROLLED ACCESS



OUTSTANDING
ACCESS TO US 95
AND I-15



WALKING DISTANCE
TO DOWNTOWN
COURTHOUSES AND
GOVERNMENT BUILDINGS



PARKING GARAGE

2ND FLOOR

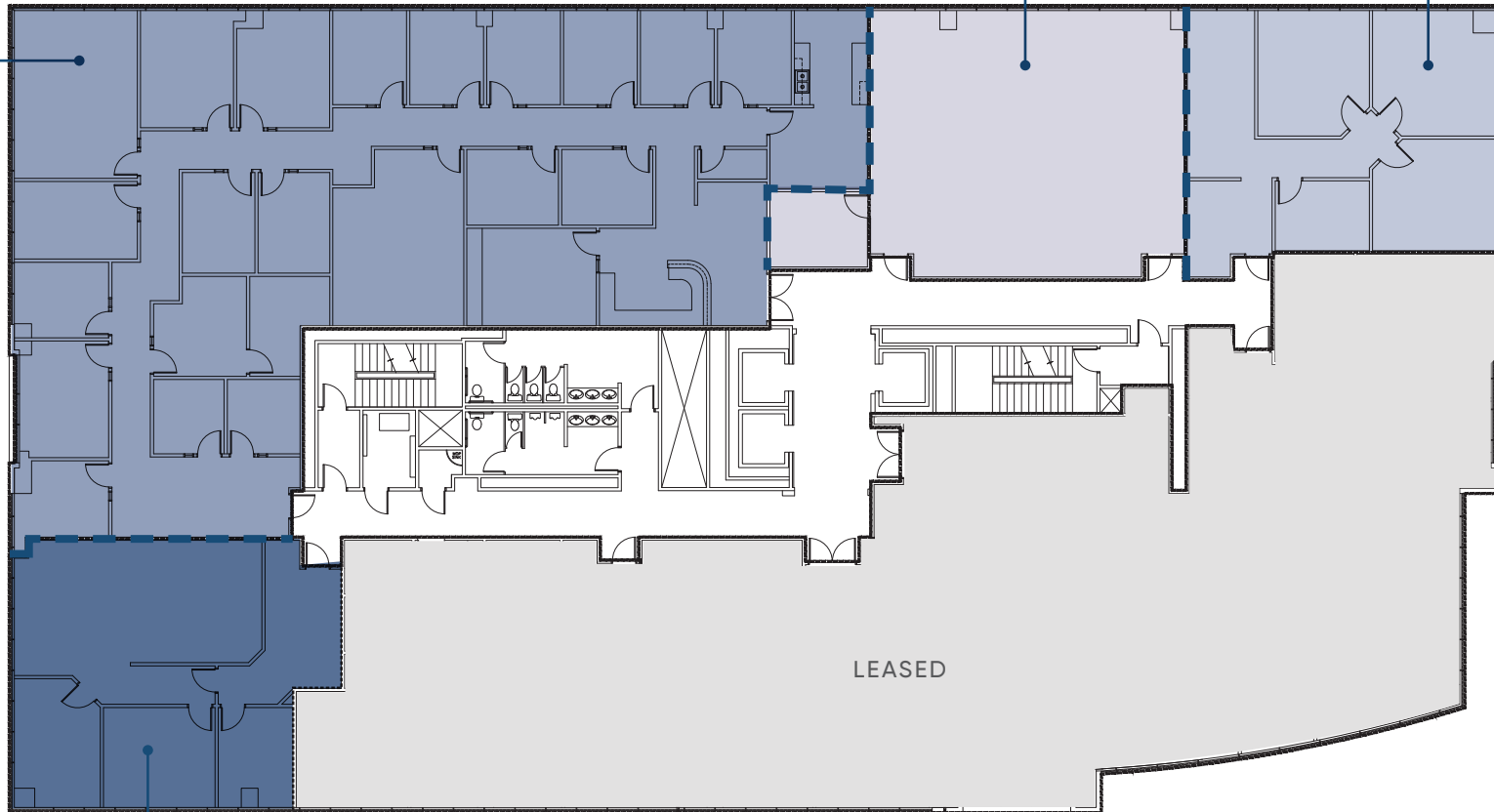
AVAILABILITIES

SUITE 250A
±6,581 RSF

SUITE 250B
±1,706 RSF



SUITE 225
±1,572 RSF



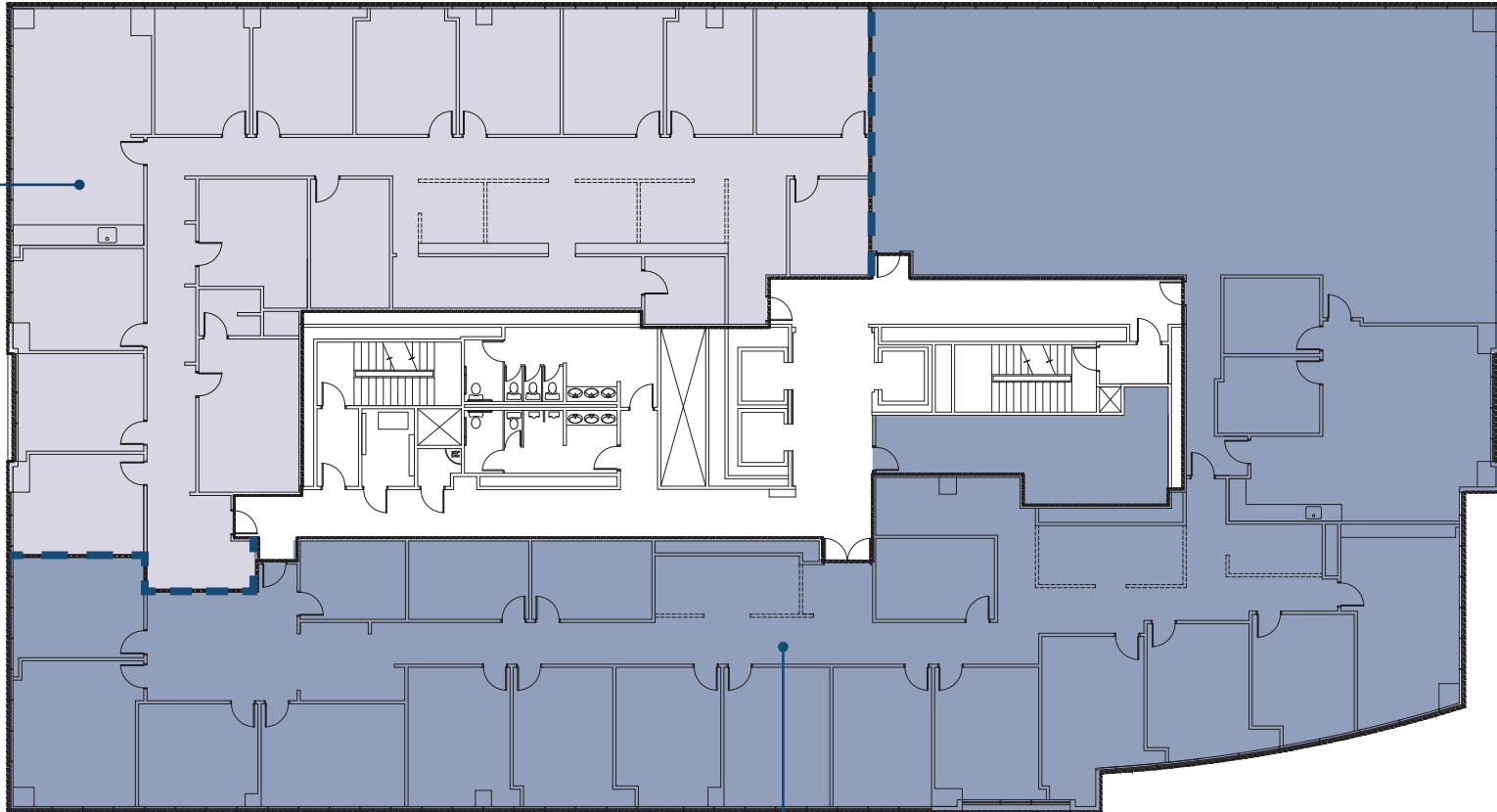
SUITE 270
±1,664 RSF



4TH FLOOR

AVAILABILITIES

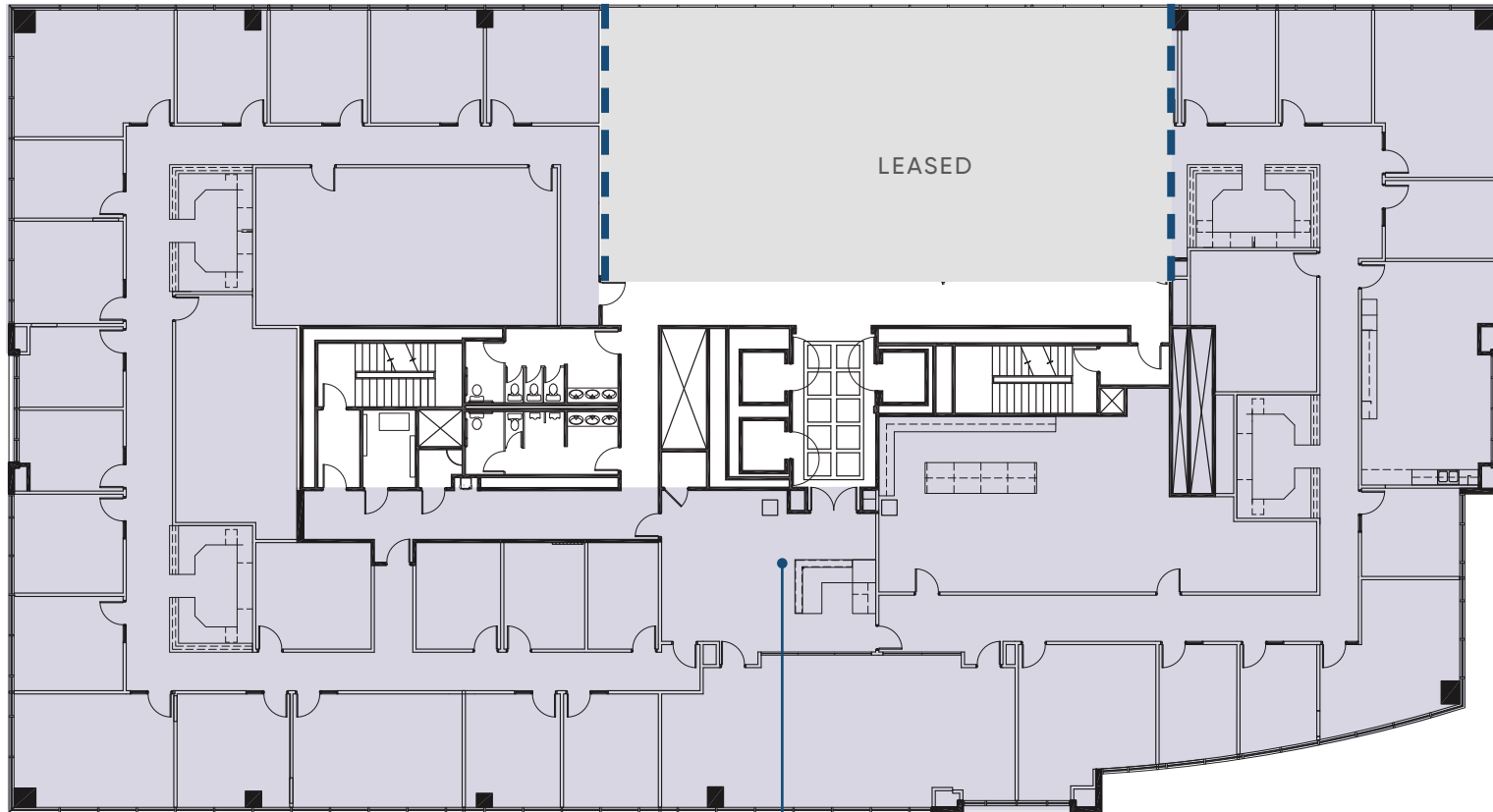
SUITE 400
±6,973 RSF



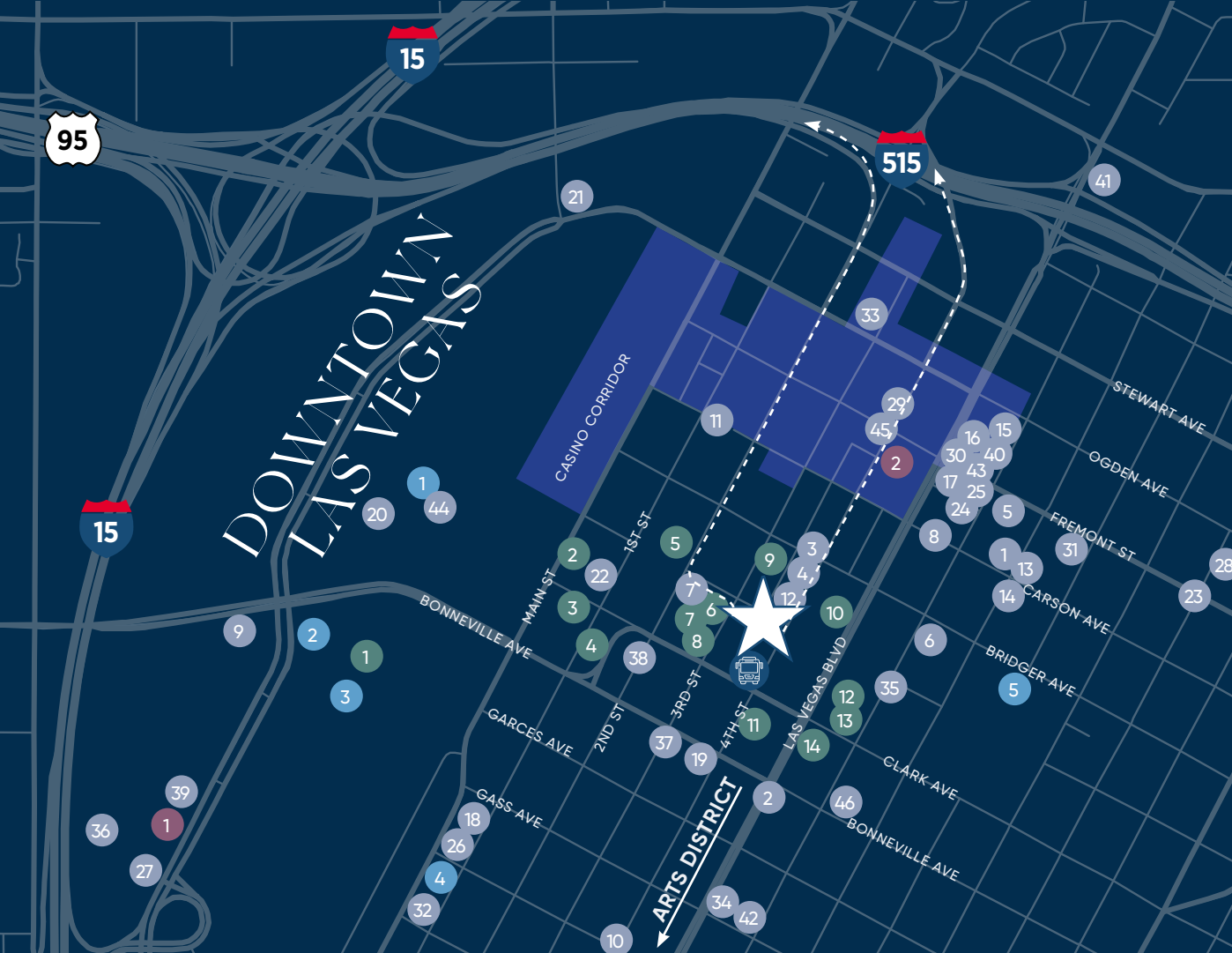
SUITE 450
±12,429 RSF

6TH FLOOR

AVAILABILITIES



SUITE 600
±17,281 RSF 



CONVENIENTLY CLOSE
AMENITIES

From coffee to dining to cocktails, hotels, entertainment, and shopping – you'll find it all just outside your door.



COURTHOUSES

1. Clark County Government Center
2. Las Vegas City Hall
3. Las Vegas Municipal Courts
4. City of Las Vegas Municipal Courthouse
5. Clark County Detention Center
6. Las Vegas Justice Court
7. Clark County Court Education
8. Clark County Courthouse
9. Clark County Law Library & Public Defender's Office
10. U.S. Bankruptcy Court, District of Nevada
11. Supreme Court of Nevada
12. Federal Courthouse
13. Lloyd D George Courthouse
14. Federal Justice Tower

RESTAURANTS

1. 7th & Carson
2. After Hour Pizza
3. AmeriBrunch Cafe
4. Bad Owl Coffee Roaster
5. Bangkok Street Thai Street Kitchen
6. Brew It Coffee House
7. Capriotti's Sandwich Shop
8. Carson Kitchen
9. Cheesecake Factory
10. Chicago Joe's Restaurant
11. Chick-fil-A
12. Daily Dose Cafe
13. Downtown Terrace
14. eat.
15. Eureka! Discover American Craft
16. Evel Pie
17. Flippin' Good Chicken, Burgers, Beer
18. Great Greek Mediterranean Grill
19. Greens and Proteins
20. Home Span
21. Jason's Deli
22. Jimmy John's
23. The Kitchen at Atomic
24. La Mona Rosa
25. Le Thai
26. Letty's de Leticia's Cocina
27. Medellin Empanadas
28. Mothership Coffee Ferguson's
29. Nacho Daddy
30. Park on Fremont
31. Pinches Tacos
32. The Pepper Club

33. Pizza Rock
34. Rick's Rollin Smoke BBQ
35. RTS Courthouse Cafe
36. Shake Shack
37. Sin City Seafoodhouse
38. Starbucks
39. Subway
40. Sushi Ichiban
41. Taqueria El Buen Pastor
42. Taqueria Ktrina
43. Therapy
44. Vic's
45. White Castle
46. The Writers Block

SHOPPING

1. Las Vegas North Premium Outlets
2. Walgreens

EV CHARGING

1. OpConnect
2. Blink
3. ChargePoint
4. GreenJuice
5. Tesla Supercharger

DOWNTOWN LAS VEGAS:

WHERE WORK TURNS TO PLAY



CULTURE & ARTS

- Discovery Children's Museum
- Natural History Museum
- Las Vegas Arts District
- Neon Museum
- Mob Museum
- The Smith Center for the Performing Arts

ENTERTAINMENT

- Fremont Street Experience
- Neonopolis
- Life is Beautiful Festival
- The Mob Museum
- Viva Vision Canopy Light Show
- Area 15

PARKS

- Cashman Complex
- Container Park
- Symphony Park

HOTELS & CASINOS

- California Hotel & Casino
- Golden Gate Hotel & Casino
- Circa
- Fremont Hotel & Casino
- Downtown Grand Hotel & Casino
- Golden Nugget Las Vegas
- El Cortez Hotel & Casino
- Main Street Station Casinos
- Four Queens Hotel & Casino
- Plaza Hotel & Casino
- Oasis at Gold Spike
- The D Las Vegas



SHOPPING



- Costco
- World Market Center
- Las Vegas Premium Outlets North

HEALTHCARE

- Las Vegas Medical District
- Lou Ruva Center for Brain Health
- University Medical Center
- Valley Hospital Medical Center

CITY CENTRE PLACE

FOR MORE INFORMATION, PLEASE CONTACT:

CHARLES VAN GEEL

Senior Director

+1 702 688 6966

charles.vangeel@cushwake.com

LIC #B.044616

AMY LANCE

Director

+1 702 688 6872

amy.lance@cushwake.com

LIC #S.0178374

TROY LANCE

Associate

+1 702 680 0051

troy.lance@cushwake.com

LIC #S.0200618

