

# Office For Lease





## Highlights

- Owner occupied
- Ample surface parking
- 3 Floors
- Executive heated & covered parking available
- Easy access to and from I-694

## Demographics

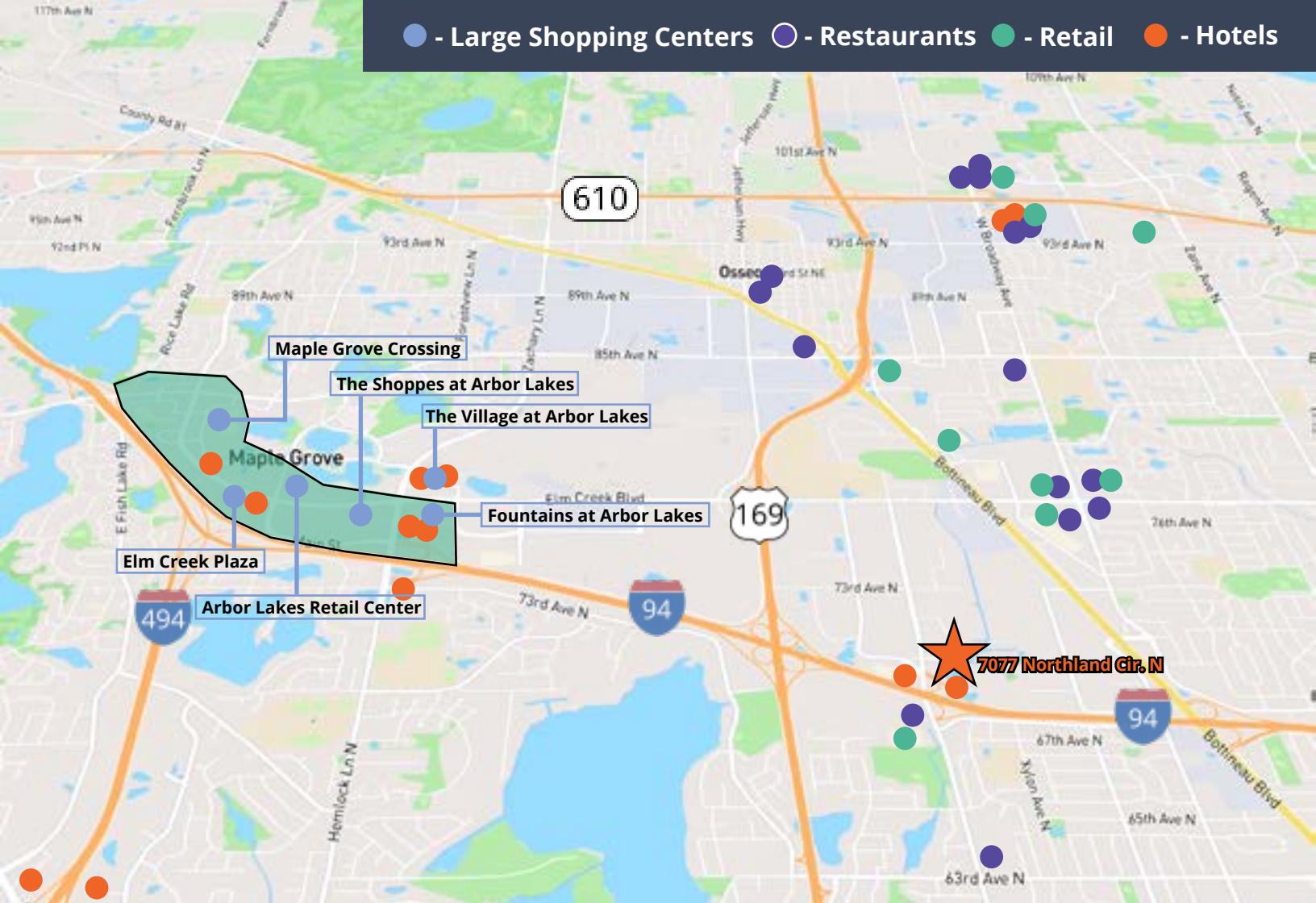
	1 Mile	3 Miles	5 Miles
Population	6,248	89,066	242,175
Household	2,481	34,805	93,192
Avg. Income	\$78,095	\$86,280	\$102,121

Brian Helmken  
Executive Vice President  
+1 612 351 4138

Erik Heltne  
Executive Vice President  
+1 612 351 4139

Addison Althoff  
Associate  
+1 612 473 6987

**AVISON  
YOUNG**



# 11,474 SF Office Space in Brooklyn Park For Lease

## Office For Lease

SF Available	11,474 SF
Lease Rate	\$14.00 NNN
TAX/OPEX	\$8.98
Term	3 -5 years
Building Size	22,245 SF
Year Built	2007
Parking	85 Surface 22 Covered
Class	B
Market	Minneapolis /St.Paul
Submarket	Northwest

## Suite Availabilities:

Suite #	SF
Suite 100	3,875 SF
Suite 200	3,586 SF
Suite 210	4,013 SF



Brian Helmken  
Executive Vice President  
+1 612 351 4138

Erik Heltne  
Executive Vice President  
+1 612 351 4139

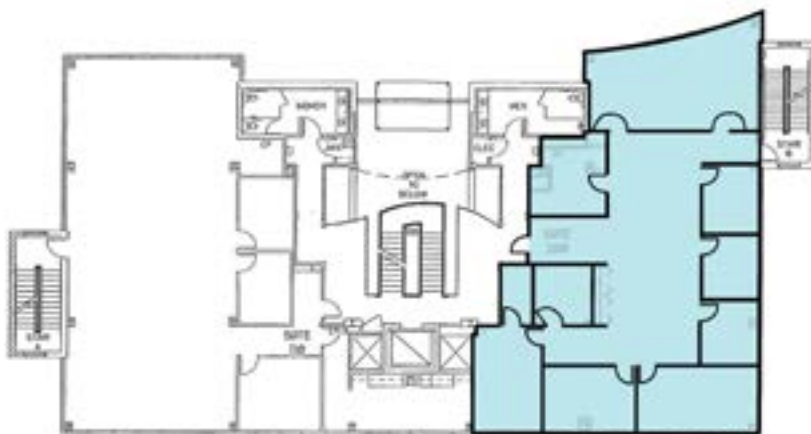
Addison Althoff  
Associate  
+1 612 473 6987



# 1st Floor Floor Plan



Suite - 100 3,875 SF



Suite - 200 3,586 SF

# 2nd Floor Floor Plan



Suite - 210 4,013 SF



**To plan a tour or for more information,  
get in touch.**

**Brian Helmken**, Executive Vice President

D 612 351 4138

C 612 701 8787

[brian.helmken@avisonyoung.com](mailto:brian.helmken@avisonyoung.com)

**Erik Heltne**, Executive Vice President

D 612 351 4139

C 612 237 9226

[erik.heltne@avisonyoung.com](mailto:erik.heltne@avisonyoung.com)

**Addison Althoff**, Associate

D 612 473 6987

C 763 478 7982

[addison.althoff@avisonyoung.com](mailto:addison.althoff@avisonyoung.com)

Avison Young

1665 Utica Ave South

Suite 300-E

Minneapolis, MN 55416

[avisonyoung.us](http://avisonyoung.us)