



VACANT LOT IN KAPOLEI FOR SALE

MALAKOLE INDUSTRIAL PARK - LOT 2 · KOMOHANA STREET, KAPOLEI, HI 96707

PROPERTY DESCRIPTION

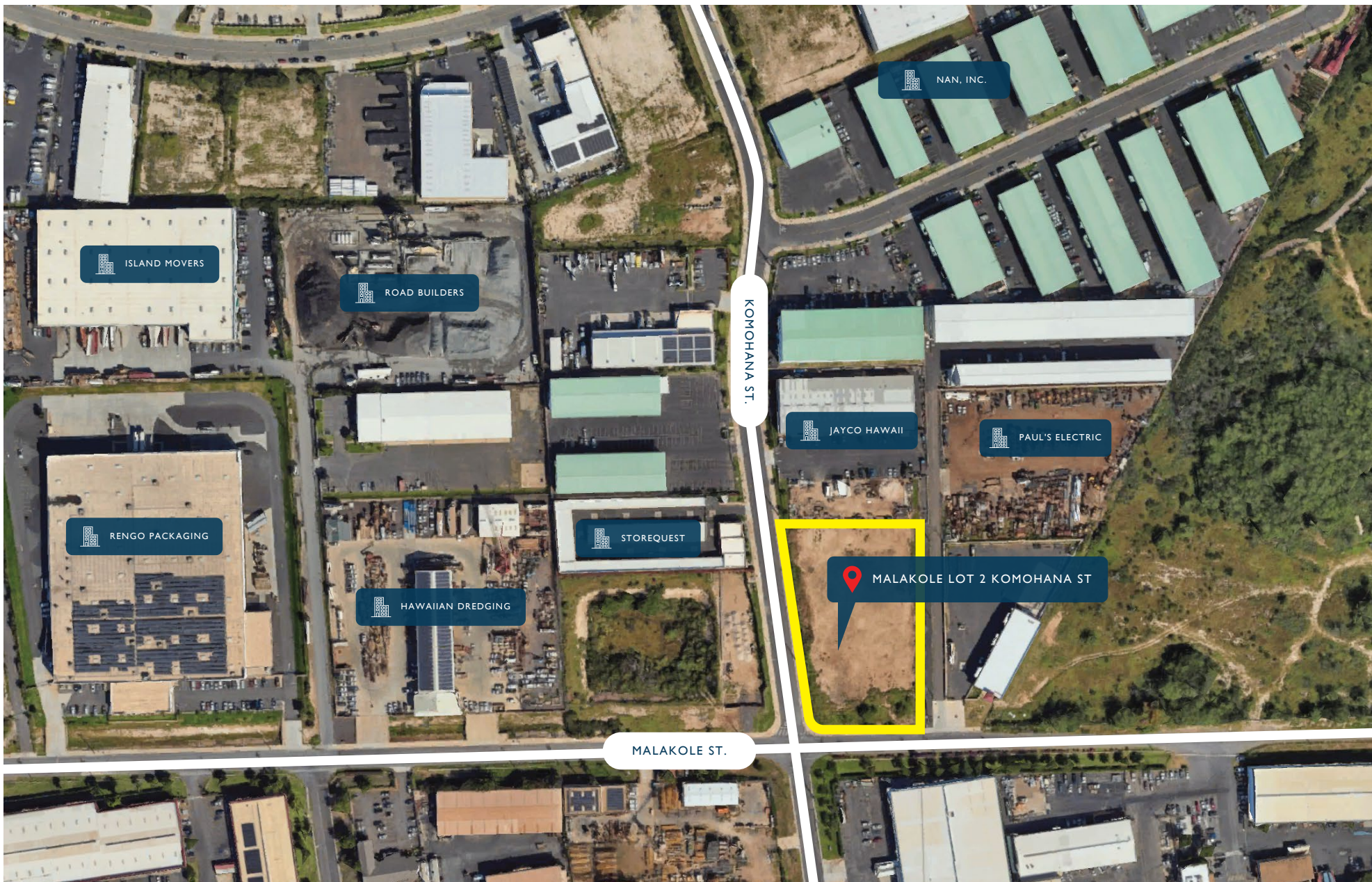
Rarely available fee simple industrial zoned lot located on the corner of Malakole Street and Komohana Street in Kapolei. This property is stubbed for utilities and shovel ready. The market is scarce, and vacant land is hard to find. This property is flat and ready to build.

Don't miss this opportunity to own one of the last remaining undeveloped parcels in Malakole Industrial Park.

Conveniently located in Kapolei, Oahu's second city. Easy access to H-1 freeway, Barber's Point Harbor and Downtown Kapolei. Businesses nearby include Costco, Home Depot, Target and Walmart.

PROPERTY DETAILS

ASKING PRICE	\$6,550,000 (\$75/SF)
TMK	1-9-1-175-76-2
SIZE	2 ACRES (87,120 SF)
ZONING	I-2 INDUSTRIAL
TENURE	Fee Simple
RPT	\$44,962.33 (ANNUAL)



INDUSTRIAL
GROUP HAWAII

JAY K. ELICKER (B) CCIM, SIOR · Partner · Industrial Services · RB 21204 | 808-218-8318 · jelicker@caahawaii.com

©2025 Commercial Asset Advisors. All information contained herein is obtained from sources deemed reliable. However, no representations or guarantees are made as to the accuracy thereof, and it is provided herein subject to errors, omissions, changes and withdrawals without notice. Offeror and/or his agent should confirm this information prior to making any offer. Buyer agrees that all negotiation shall be conducted through CAA only. No subagency is offered or intended.

