

BUILDING/PARKING DATA
 20,000 SF. BUILDING W/
 135 PARKING SPACES PROVIDED (1 PER 144 SF.)

Land Quest Properties
 975 Mezzanine Dr.
 Lafayette, IN 47905

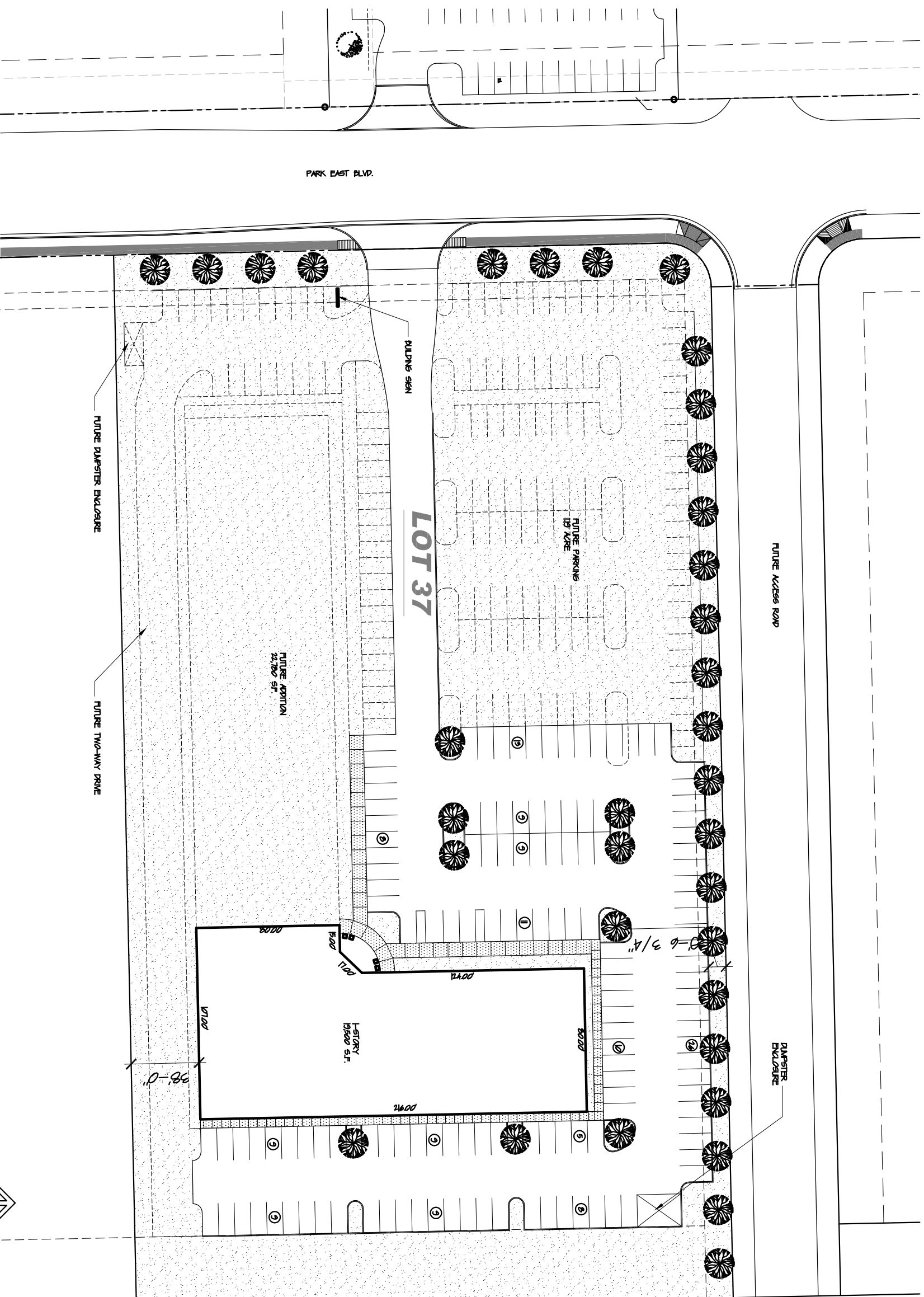
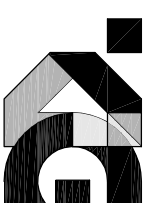
LOT 37
CASCADA PARK

April 6, 2009

Site Plan
 Schematic Design

Architect:

KJG Architecture, Inc.
 527 Sagamore Parkway W., Suite 101
 West Lafayette, Indiana 47906
 Office: 765.497.4598 Fax: 765.497.4599



ARCHITECTURAL SITE PLAN
 SCALE: 1" = 60'-0"

