



# San Juan Centers

Shopping Center

## Farmington, NM

At the Intersection of Main St. & 20<sup>th</sup> St.



### Demographics **Farmington Metro** **Trade Area** Available

Population	131,875	355,538
Med. Income	\$40,185	\$40,226

- Anchor, Jr. Anchor, Restaurant & Retail Space
- Ranges from 800 SF - 11,288 SF
- Ranges from \$970 - \$9,700/Mo.
- Ground Lease or Build-to-Suit Pads
- 57,600 SF | \$11,995/Month

Please contact us for leasing opportunities

### Surroundings Info

- Anchored by Staples, Hobby Lobby, Ace Hardware, Dollar General, Shamrock Foods & Coming Soon, Michaels; Adjacent to Home Depot, Safeway, Petco, TJ Maxx & Best Buy.
- Most desirable retail intersection in the Four Corners Region.
- Farmington has higher retail sales per capita than any other city in New Mexico.
- The San Juan Centers' Main Street location and expansive tenant mix have made these the Region's strongest & most consistent shopping centers for over 40 years.
- Farmington features two Wal-Mart Supercenters & a Regional Mall and is the main city serving the nation's largest concentration Indian Reservations.
- Four electronic reader board signs.

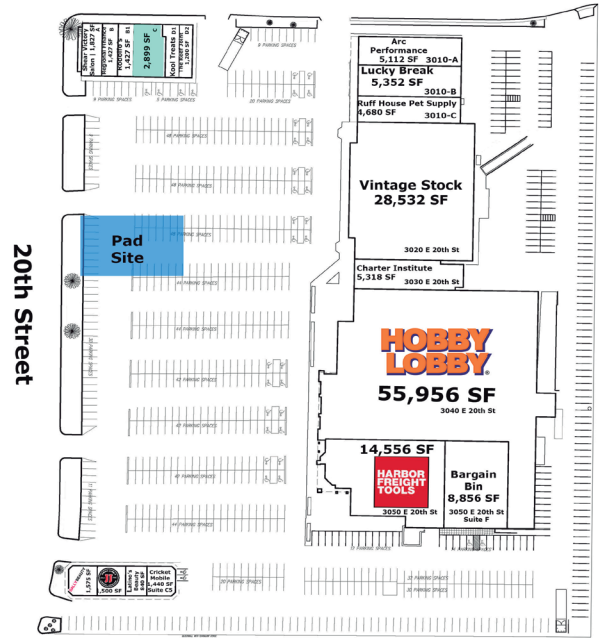


#### Contact

Vanessa Valadez  
 505.884.3578  
 Vanessa@PetersonProperties.net

[PetersonProperties.net](http://PetersonProperties.net)  
 /petersonpropertiesllc  
 /petersonpropertiesllc  
 /peterson.properties

### Site Plan

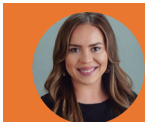
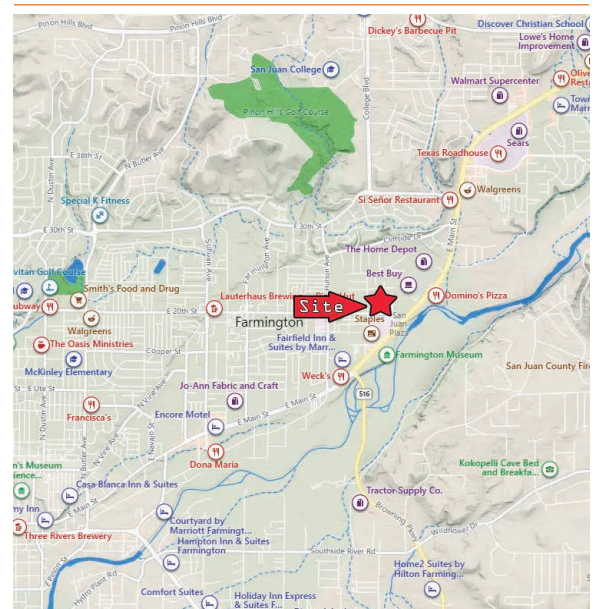


Please contact us for leasing opportunities

### Aerial Map



At the intersection of Main St. & 20th St., Farmington, NM



**Contact us**  
 Vanessa Valadez | 505.884.3578 | Vanessa@PetersonProperties.net

