

COCCA DEVELOPMENT

VACANT LAND FOR BTS SOUTH CHALLIS STREET SALMON, ID 83467



- Plot is adjacent to Shopko, with approximately 28 acres available for development
- An all-season destination, the Salmon area possesses popular summer and winter activities such as hunting, fishing, whitewater rafting, horseback riding, and skiing, as well as having a rich history of strong traditions including mining, lumbering, and ranching
- Just .6 miles off US 93 in Lemhi County, along the Salmon River in central Idaho

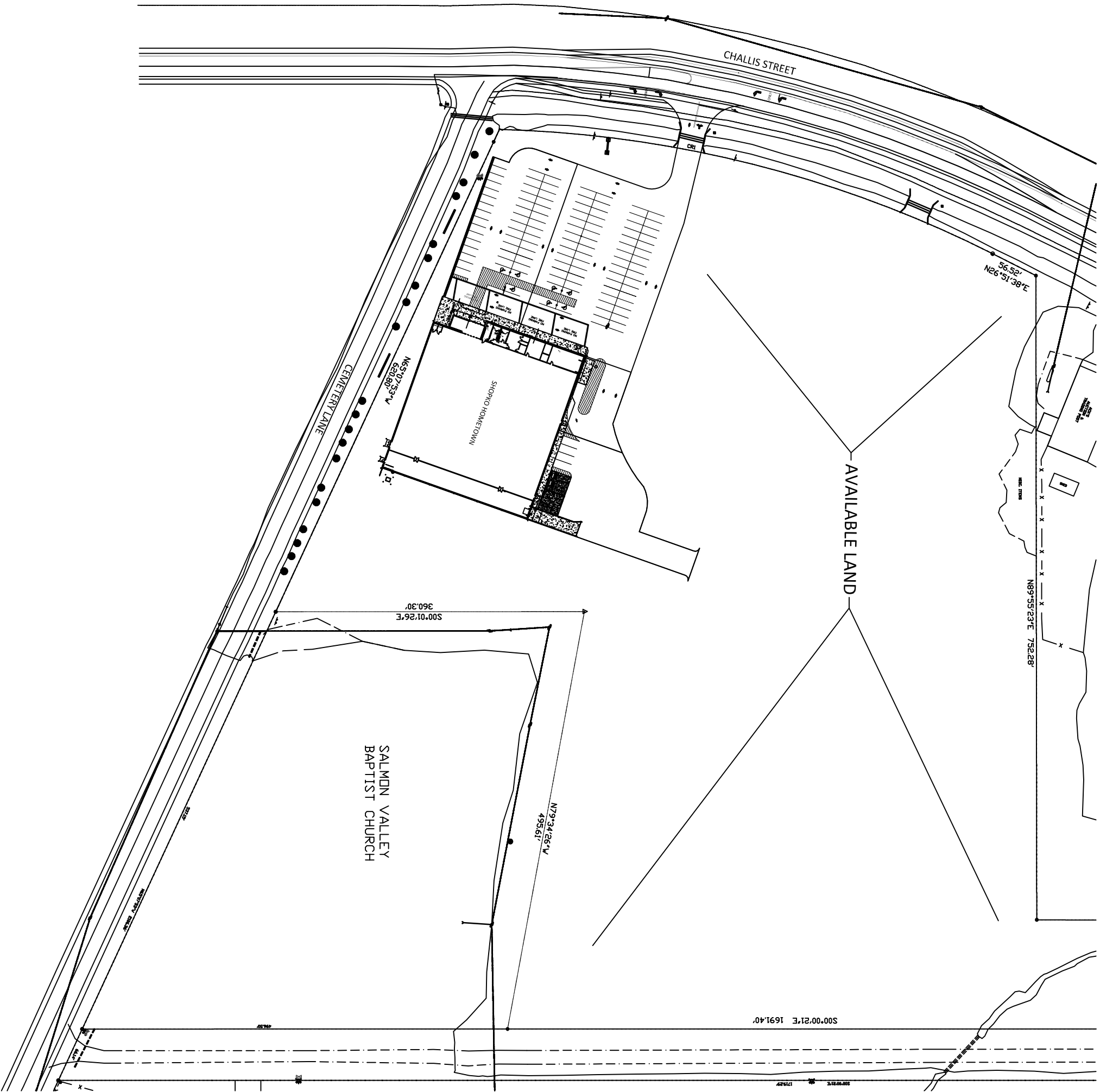
AVAILABLE 28 ACRES

WILL BUILD TO SUIT

NNN: Base rent plus prorata share of Real Estate Taxes, Insurance, and Common Area expenses, including but not limited to snow removal, lawn care, and parking lot maintenance. Tenant pays separately metered utilities for gas, electric, water, sewer, & trash removal.

CALL 330-729-1010 FOR MORE INFORMATION

www.coccadevelopment.com



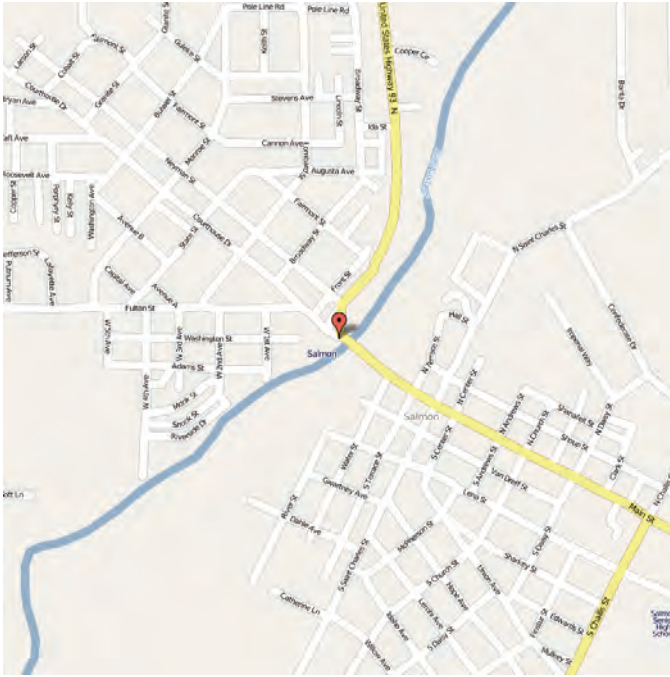


This map was produced using data from private and government sources deemed to be reliable. The information herein is provided without representation or warranty.

Map data ©2014 Google, Imagery ©2014, DigitalGlobe, USDA Farm Service Agency

1026 South Challis Street

Salmon, ID 83467



The site is ideally located at 1026 South Challis Street just .6 mile off US 93 in Lemhi County, on the Salmon River in central Idaho, adjacent to the newly-constructed Shopko.

To the north of Salmon, just across the Continental Divide into Montana, driving along Hwy 93, you will find

Darby, Hamilton Montana, Corvallis, Victor, Stevensville, Florence and Missoula.

To the southeast, after heading out of Salmon on Hwy 28, you will find Idaho Falls. Directly south, driving along Hwy 93, you will come to Challis, Idaho, and then the state Capital, Boise, Idaho.



COCCA DEVELOPMENT, LTD

1026 South Challis Street

Salmon, ID 83467

AT A GLANCE

- ◆ The Lewis and Clark Expedition crossed the continental divide at Lemhi Pass, 30 miles to the southeast of Salmon. They followed the Salmon River through the present site of the city, then ascended the North Fork of the river to cross into present-day Montana near Lost Trail Pass
- ◆ From 1910 to 1939, Salmon was the western terminus of the now defunct Gilmore and Pittsburgh Railroad
- ◆ ‘The City of Salmon and surrounding area are truly one of Idaho's last and greatest secrets.’ An all-season destination, the Salmon area possesses a number of summer and winter activities
- ◆ Famous for its own "River of No Return" from a movie by that same name, starring Marilyn Monroe. Though filmed in Canada, the movie was based on the Salmon River.

GRAPHIC PROFILE

2000-2010 Census, 2014 Estimates with 2019 Projections

Calculated using Proportional Block Groups

Lat/Lon: 45.1649/-113.8929

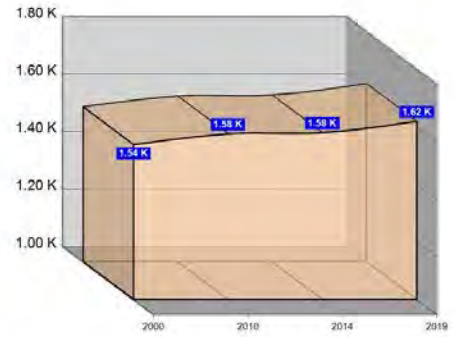
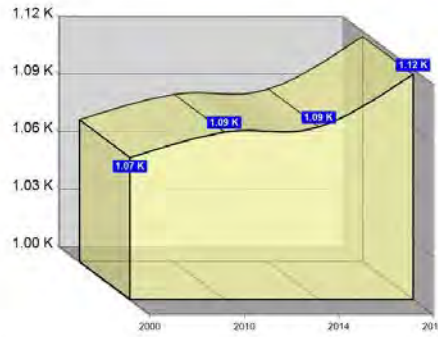
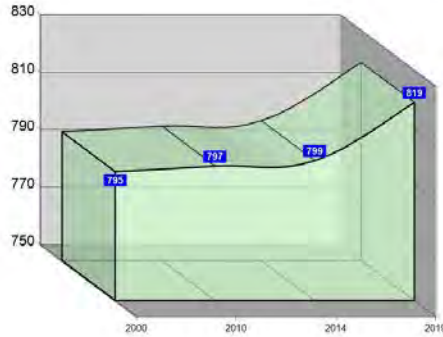
RGRAP3

1026 S Challis St

Salmon, ID

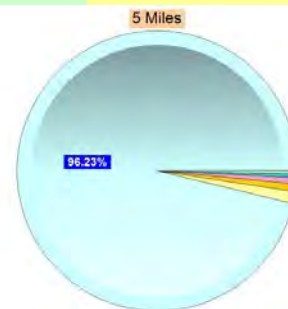
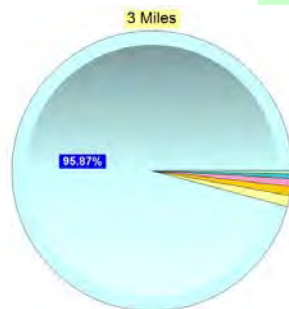
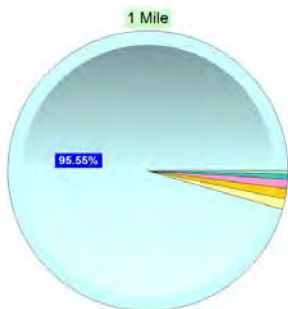
Population

	1 Mile	3 Miles	5 Miles
Estimated Population (2014)	799	1,090	1,580
Projected Population (2019)	819	1,117	1,619
Census Population (2010)	797	1,087	1,576
Census Population (2000)	795	1,074	1,539
Projected Annual Growth (2014-2019)	20 0.5%	27 0.5%	39 0.5%
Historical Annual Growth (2010-2014)	2 0.1%	3 0.3%	4 0.6%
Historical Annual Growth (2000-2010)	2 -	13 0.1%	37 0.2%
Estimated Population Density (2014)	254 psm	39 psm	20 psm
Trade Area Size	3.1 sq mi	28.3 sq mi	78.5 sq mi



Race and Ethnicity (2014)

	1 Mile	3 Miles	5 Miles
Not Hispanic or Latino Population	784 98.2%	1,067 97.9%	1,543 97.7%
White	755 96.3%	1,031 96.6%	1,496 96.9%
Black or African American	3 0.4%	4 0.3%	5 0.3%
American Indian or Alaska Native	9 1.1%	10 0.9%	12 0.8%
Asian	9 1.1%	10 0.9%	11 0.7%
Hawaiian or Pacific Islander	- -	- -	- -
Other Race	- -	- -	- -
Two or More Races	9 1.1%	12 1.2%	19 1.2%
Hispanic or Latino Population	15 1.8%	23 2.1%	37 2.3%
White	8 53.7%	14 60.6%	25 66.7%
Black or African American	- -	- 1.1%	1 2.1%
American Indian or Alaska Native	1 6.8%	1 6.2%	2 5.3%
Asian	- -	- 0.3%	- 0.4%
Hispanic Hawaiian or Pacific Islander	- -	- -	- -
Other Race	5 32.7%	6 24.8%	7 18.3%
Two or More Races	1 6.8%	2 7.0%	3 7.2%



White Black or African American American Indian or Alaska Native Asian Hawaiian or Pacific Islander Other Race 2+ Races

This report was produced using data from private and government sources deemed to be reliable. The information herein is provided without representation or warranty.

GRAPHIC PROFILE

2000-2010 Census, 2014 Estimates with 2019 Projections

Calculated using Proportional Block Groups

Lat/Lon: 45.1649/-113.8929

RGRAP3

1026 S Challis St

Salmon, ID

1 Mile

3 Miles

5 Miles

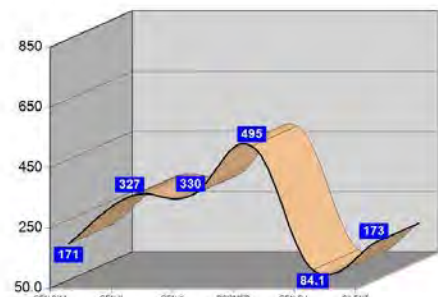
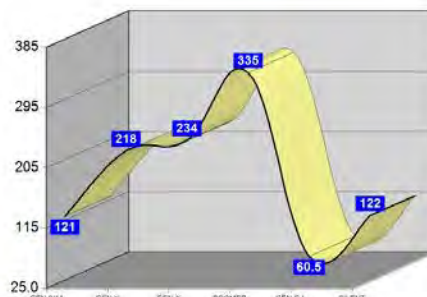
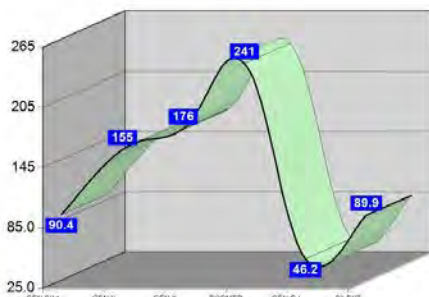
Age Distribution (2014)

Age Group	1 Mile	3 Miles	5 Miles
Age Under 5 Years	42 5.3%	55 5.1%	77 4.9%
Age 5 to 9 Years	48 6.0%	65 6.0%	94 5.9%
Age 10 to 14 Years	39 4.8%	56 5.1%	86 5.5%
Age 15 to 19 Years	43 5.4%	60 5.5%	88 5.6%
Age 20 to 24 Years	46 5.8%	58 5.3%	76 4.8%
Age 25 to 29 Years	48 6.0%	60 5.5%	79 5.0%
Age 30 to 34 Years	44 5.5%	60 5.5%	88 5.6%
Age 35 to 39 Years	38 4.7%	51 4.7%	75 4.8%
Age 40 to 44 Years	28 3.5%	43 3.9%	70 4.4%
Age 45 to 49 Years	45 5.7%	63 5.8%	94 6.0%
Age 50 to 54 Years	50 6.3%	71 6.5%	106 6.7%
Age 55 to 59 Years	62 7.8%	89 8.2%	135 8.6%
Age 60 to 64 Years	64 8.0%	87 8.0%	127 8.0%
Age 65 to 69 Years	65 8.1%	88 8.1%	127 8.0%
Age 70 to 74 Years	53 6.7%	72 6.6%	104 6.6%
Age 75 to 79 Years	37 4.6%	49 4.5%	69 4.4%
Age 80 to 84 Years	26 3.2%	32 3.0%	42 2.7%
Age 85 Years or Over	20 2.5%	28 2.6%	42 2.6%
Median Age	46.5	46.8	46.9

Generation (2014)

Generation	1 Mile	3 Miles	5 Miles
Generation 9/11 Millennials (Age Under 10 Years)	90 11.3%	121 11.1%	171 10.8%
Gen Y to Echo Boomers (Age 10 to 29 Years)	176 22.0%	234 21.5%	330 20.9%
Gen Xers (Age 30 to 49 Years)	155 19.4%	218 20.0%	327 20.7%
Baby Boomers (Age 50 to 69 Years)	241 30.2%	335 30.8%	495 31.3%
Silent Generation (Age 70 to 79 Years)	90 11.3%	122 11.1%	173 10.9%
G.I. Generation (Age 80 Years or Over)	46 5.8%	61 5.6%	84 5.3%

This report was produced using data from private and government sources deemed to be reliable. The information herein is provided without representation or warranty.



GRAPHIC PROFILE

2000-2010 Census, 2014 Estimates with 2019 Projections

Calculated using Proportional Block Groups

Lat/Lon: 45.1649/-113.8929

RGRAP3

1026 S Challis St Salmon, ID

1 Mile

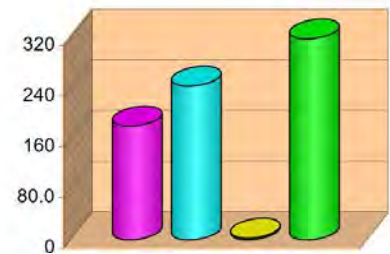
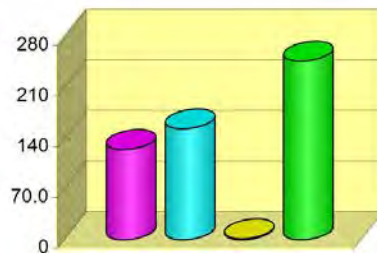
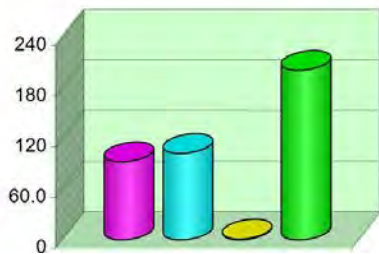
3 Miles

5 Miles

Household Type (2014)

	1 Mile	3 Miles	5 Miles
Total Households	397	527	743
Family Households	195 25.8%	278 29.1%	422 32.7%
Family Households with Children	92 47.5%	125 44.9%	180 42.5%
Family Households No Children	102 52.5%	154 55.1%	243 57.5%
Non-Family Households	202 25.8%	249 29.1%	320 32.7%
Non-Family Households with Children	1 0.5%	2 0.6%	3 0.8%
Non-Family Households No Children	201 99.5%	247 99.4%	318 99.2%

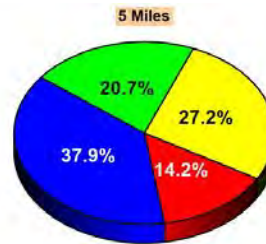
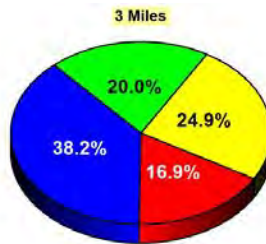
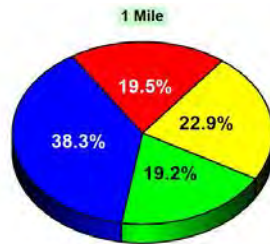
- Family Households with Children
- Family Households No Children
- Non-Family Households with Children
- Non-Family Households No Children



Education Attainment (2014)

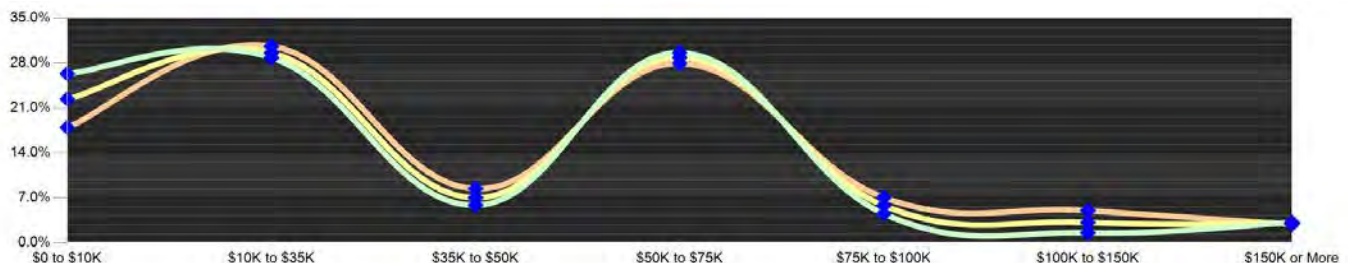
	1 Mile	3 Miles	5 Miles
Elementary or Some High School	113 19.5%	134 16.9%	164 14.2%
High School Graduate	133 22.9%	198 24.9%	314 27.2%
Some College or Associate Degree	222 38.3%	303 38.2%	437 37.9%
Bachelor or Graduate Degree	112 19.2%	159 20.0%	239 20.7%

- Elementary or Some High School
- High School Graduate
- Some College or Associate Degree
- Bachelor or Graduate Degree



Household Income (2014)

	1 Mile	3 Miles	5 Miles
Estimated Average Household Income	\$64,440	\$61,640	\$58,374
Estimated Median Household Income	\$41,187	\$42,635	\$44,093
HH Income Under \$10,000	105 26.4%	118 22.4%	134 18.0%
HH Income \$10,000 to \$34,999	114 28.9%	156 29.6%	228 30.7%
HH Income \$35,000 to \$49,999	23 5.9%	37 7.0%	63 8.4%
HH Income \$50,000 to \$74,999	117 29.6%	152 28.9%	208 27.9%
HH Income \$75,000 to \$99,999	6 1.6%	17 3.2%	37 5.0%
HH Income \$100,000 to \$149,999	6 1.6%	17 3.2%	37 5.0%
HH Income \$150,000 or More	13 3.2%	16 3.1%	21 2.9%



This report was produced using data from private and government sources deemed to be reliable. The information herein is provided without representation or warranty.

EXPANDED PROFILE

2000-2010 Census, 2014 Estimates with 2019 Projections

Calculated using Proportional Block Groups

Lat/Lon: 45.1649/-113.8929

RF5

1026 S Challis St Salmon, ID	1 Mile	3 Miles	5 Miles
Population			
Estimated Population (2014)	799	1,090	1,580
Projected Population (2019)	819	1,117	1,619
Census Population (2010)	797	1,087	1,576
Census Population (2000)	795	1,074	1,539
Projected Annual Growth (2014 to 2019)	20 0.5%	27 0.5%	39 0.5%
Historical Annual Growth (2010 to 2014)	2 0.1%	3 0.1%	4 0.1%
Historical Annual Growth (2000 to 2010)	2 -	13 0.1%	37 0.2%
Estimated Population Density (2014)	254 <i>psm</i>	39 <i>psm</i>	20 <i>psm</i>
Trade Area Size	3.14 <i>sq mi</i>	28.26 <i>sq mi</i>	78.49 <i>sq mi</i>
Households			
Estimated Households (2014)	397	527	743
Projected Households (2019)	407	541	763
Census Households (2010)	387	514	725
Census Households (2000)	380	495	681
Estimated Households with Children (2014)	93 23.5%	126 24.0%	182 24.5%
Estimated Average Household Size (2014)	2.01	2.06	2.12
Average Household Income			
Estimated Average Household Income (2014)	\$66,465	\$63,676	\$60,314
Projected Average Household Income (2019)	\$70,435	\$67,820	\$64,629
Estimated Average Family Income (2014)	\$107,599	\$95,205	\$82,947
Median Household Income			
Estimated Median Household Income (2014)	\$27,316	\$31,249	\$35,363
Projected Median Household Income (2019)	\$28,846	\$33,321	\$38,034
Estimated Median Family Income (2014)	\$55,446	\$55,462	\$55,197
Per Capita Income			
Estimated Per Capita Income (2014)	\$33,004	\$30,806	\$28,383
Projected Per Capita Income (2019)	\$35,022	\$32,863	\$30,471
Estimated Per Capita income 5 Year Growth	\$2,018 6.1%	\$2,057 6.7%	\$2,087 7.4%
Estimated Average Household Net Worth (2014)	\$263,313	\$271,584	\$279,316
Daytime Demos (2014)			
Total Businesses	136	153	171
Total Employees	820	917	1,019
Company Headquarter Businesses	-	-	-
Company Headquarter Employees	-	-	-
Employee Population per Business	6.0	6.0	6.0
Residential Population per Business	5.9	7.1	9.2

This report was produced using data from private and government sources deemed to be reliable. The information herein is provided without representation or warranty.

EXPANDED PROFILE

2000-2010 Census, 2014 Estimates with 2019 Projections

Calculated using Proportional Block Groups

Lat/Lon: 45.1649/-113.8929

RF5

1026 S Challis St Salmon, ID	1 Mile		3 Miles		5 Miles	
Race & Ethnicity						
White (2014)	763	95.6%	1,045	95.9%	1,520	96.2%
Black or African American (2014)	3	0.4%	4	0.4%	5	0.3%
American Indian or Alaska Native (2014)	10	1.2%	11	1.1%	14	0.9%
Asian (2014)	9	1.1%	10	0.9%	12	0.7%
Hawaiian or Pacific Islander (2014)	-	-	-	-	-	-
Other Race (2014)	5	0.6%	6	0.5%	7	0.4%
Two or More Races (2014)	10	1.2%	14	1.3%	22	1.4%
Not Hispanic or Latino Population (2014)	784	98.2%	1,067	97.9%	1,543	97.7%
Hispanic or Latino Population (2014)	15	1.8%	23	2.1%	37	2.3%
Not Hispanic or Latino Population (2019)	800	97.7%	1,089	97.5%	1,573	97.2%
Hispanic or Latino Population (2019)	19	2.3%	28	2.5%	46	2.8%
Not Hispanic or Latino Population (2010)	785	98.5%	1,069	98.3%	1,546	98.1%
Hispanic or Latino Population (2010)	12	1.5%	18	1.7%	29	1.9%
Not Hispanic or Latino Population (2000)	769	96.8%	1,044	97.2%	1,504	97.7%
Hispanic or Latino Population (2000)	26	3.2%	30	2.8%	35	2.3%
Projected Hispanic Annual Growth (2014 to 2019)	4	5.3%	6	5.1%	9	4.9%
Historic Hispanic Annual Growth (2000 to 2014)	-11	-3.1%	-7	-1.7%	2	0.3%
Age Distribution (2014)						
Age Under 5	42	5.3%	55	5.1%	77	4.9%
Age 5 to 9 Years	48	6.0%	65	6.0%	94	5.9%
Age 10 to 14 Years	39	4.8%	56	5.1%	86	5.5%
Age 15 to 19 Years	43	5.4%	60	5.5%	88	5.6%
Age 20 to 24 Years	46	5.8%	58	5.3%	76	4.8%
Age 25 to 29 Years	48	6.0%	60	5.5%	79	5.0%
Age 30 to 34 Years	44	5.5%	60	5.5%	88	5.6%
Age 35 to 39 Years	38	4.7%	51	4.7%	75	4.8%
Age 40 to 44 Years	28	3.5%	43	3.9%	70	4.4%
Age 45 to 49 Years	45	5.7%	63	5.8%	94	6.0%
Age 50 to 54 Years	50	6.3%	71	6.5%	106	6.7%
Age 55 to 59 Years	62	7.8%	89	8.2%	135	8.6%
Age 60 to 64 Years	64	8.0%	87	8.0%	127	8.0%
Age 65 to 74 Years	118	14.8%	160	14.7%	230	14.6%
Age 75 to 84 Years	63	7.8%	81	7.5%	112	7.1%
Age 85 Years or Over	20	2.5%	28	2.6%	42	2.6%
Median Age	46.5		46.8		46.9	
Gender Age Distribution (2014)						
Female Population	390	48.8%	533	48.9%	775	49.1%
Age 0 to 19 Years	82	21.0%	112	21.0%	163	21.0%
Age 20 to 64 Years	203	52.0%	281	52.7%	415	53.6%
Age 65 Years or Over	105	27.0%	140	26.3%	198	25.5%
Female Median Age	49.2		48.8		48.3	
Male Population	409	51.2%	557	51.1%	804	50.9%
Age 0 to 19 Years	91	22.2%	125	22.4%	183	22.7%
Age 20 to 64 Years	223	54.4%	302	54.3%	436	54.2%
Age 65 Years or Over	96	23.4%	130	23.3%	186	23.1%
Male Median Age	43.4		44.4		45.3	

This report was produced using data from private and government sources deemed to be reliable. The information herein is provided without representation or warranty.

EXPANDED PROFILE

2000-2010 Census, 2014 Estimates with 2019 Projections

Calculated using Proportional Block Groups

Lat/Lon: 45.1649/-113.8929

RF5

1026 S Challis St Salmon, ID	1 Mile		3 Miles		5 Miles	
Household Income Distribution (2014)						
HH Income \$200,000 or More	12	2.9%	14	2.6%	17	2.3%
HH Income \$150,000 to \$199,999	1	0.3%	2	0.4%	4	0.6%
HH Income \$100,000 to \$149,999	6	1.6%	17	3.2%	37	5.0%
HH Income \$75,000 to \$99,999	18	4.5%	31	5.8%	52	7.1%
HH Income \$50,000 to \$74,999	117	29.6%	152	28.9%	208	27.9%
HH Income \$35,000 to \$49,999	23	5.9%	37	7.0%	63	8.4%
HH Income \$25,000 to \$34,999	33	8.3%	49	9.3%	78	10.5%
HH Income \$15,000 to \$24,999	69	17.4%	88	16.8%	120	16.2%
HH Income Under \$15,000	117	29.5%	137	25.9%	163	22.0%
HH Income \$35,000 or More	178	44.8%	253	48.0%	381	51.3%
HH Income \$75,000 or More	37	9.3%	64	12.1%	111	15.0%
Housing (2014)						
Total Housing Units	459		607		850	
Housing Units Occupied	397	86.4%	527	86.8%	743	87.4%
Housing Units Owner-Occupied	238	60.0%	338	64.2%	511	68.7%
Housing Units, Renter-Occupied	159	40.0%	189	35.8%	232	31.3%
Housing Units, Vacant	63	13.6%	80	13.2%	107	12.6%
Marital Status (2014)						
Never Married	177	26.4%	220	24.0%	284	21.5%
Currently Married	197	29.5%	336	36.7%	585	44.3%
Separated	24	3.6%	27	3.0%	31	2.3%
Widowed	44	6.6%	59	6.4%	83	6.3%
Divorced	228	34.0%	272	29.8%	339	25.6%
Household Type (2014)						
Population Family	546	68.4%	775	71.1%	1,168	73.9%
Population Non-Family	253	31.6%	313	28.7%	406	25.7%
Population Group Quarters	-	-	2	0.2%	6	0.4%
Family Households	195	49.1%	278	52.8%	422	56.9%
Non-Family Households	202	50.9%	249	47.2%	320	43.1%
Married Couple with Children	55	27.9%	78	23.2%	117	19.9%
Average Family Household Size	2.8		2.8		2.8	
Household Size (2014)						
1 Person Households	172	43.4%	212	40.2%	272	36.7%
2 Person Households	120	30.1%	174	32.9%	267	35.9%
3 Person Households	48	12.1%	62	11.8%	86	11.5%
4 Person Households	31	7.8%	44	8.3%	66	8.9%
5 Person Households	19	4.8%	26	4.9%	36	4.9%
6 or More Person Households	7	1.7%	10	1.9%	16	2.2%
Household Vehicles (2014)						
Households with 0 Vehicles Available	45	11.3%	55	10.5%	73	9.8%
Households with 1 Vehicles Available	130	32.7%	156	29.6%	196	26.4%
Households with 2 or More Vehicles Available	222	56.1%	316	59.9%	474	63.9%
Total Vehicles Available	692		989		1,496	
Average Vehicles Per Household	1.7		1.9		2.0	

This report was produced using data from private and government sources deemed to be reliable. The information herein is provided without representation or warranty.

EXPANDED PROFILE

2000-2010 Census, 2014 Estimates with 2019 Projections

Calculated using Proportional Block Groups

Lat/Lon: 45.1649/-113.8929

RF5

1026 S Challis St

Salmon, ID

Labor Force (2014)

	1 Mile	3 Miles	5 Miles
Estimated Labor Population Age 16 Years or Over	663	901	1,299
Estimated Civilian Employed	333 50.2%	462 51.3%	682 52.5%
Estimated Civilian Unemployed	61 9.3%	76 8.5%	100 7.7%
Estimated in Armed Forces	- -	- -	- -
Estimated Not in Labor Force	269 40.5%	363 40.3%	517 39.8%
Unemployment Rate	9.3%	8.5%	7.7%

Occupation (2010)

	1 Mile	3 Miles	5 Miles
Occupation: Population Age 16 Years or Over	360	496	725
Management, Business, Financial Operations	18 4.9%	31 6.2%	54 7.5%
Professional, Related	78 21.7%	111 22.3%	167 23.0%
Service	102 28.5%	127 25.5%	163 22.5%
Sales, Office	72 20.1%	99 19.9%	144 19.8%
Farming, Fishing, Forestry	1 0.4%	5 0.9%	10 1.4%
Construct, Extraction, Maintenance	52 14.5%	73 14.8%	110 15.2%
Production, Transport Material Moving	36 10.0%	51 10.4%	77 10.6%
White Collar Workers	168 46.7%	240 48.4%	365 50.3%
Blue Collar Workers	192 53.3%	256 51.6%	360 49.7%

Consumer Expenditure (2014)

	1 Mile	3 Miles	5 Miles
Total Household Expenditure	\$21.1 M	\$27.2 M	\$36.9 M
Total Non-Retail Expenditure	\$12.0 M 57.0%	\$15.5 M 57.0%	\$21.1 M 57.1%
Total Retail Expenditure	\$9.07 M 43.0%	\$11.7 M 43.0%	\$15.8 M 42.9%
Apparel	\$1.01 M 4.8%	\$1.30 M 4.8%	\$1.76 M 4.8%
Contributions	\$728 K 3.5%	\$941 K 3.5%	\$1.28 M 3.5%
Education	\$484 K 2.3%	\$616 K 2.3%	\$824 K 2.2%
Entertainment	\$1.16 M 5.5%	\$1.49 M 5.5%	\$2.03 M 5.5%
Food and Beverages	\$3.35 M 15.9%	\$4.31 M 15.8%	\$5.82 M 15.8%
Furnishings and Equipment	\$865 K 4.1%	\$1.12 M 4.1%	\$1.54 M 4.2%
Gifts	\$521 K 2.5%	\$676 K 2.5%	\$921 K 2.5%
Health Care	\$1.36 M 6.5%	\$1.75 M 6.4%	\$2.38 M 6.4%
Household Operations	\$689 K 3.3%	\$894 K 3.3%	\$1.22 M 3.3%
Miscellaneous Expenses	\$369 K 1.8%	\$474 K 1.7%	\$641 K 1.7%
Personal Care	\$307 K 1.5%	\$395 K 1.5%	\$535 K 1.5%
Personal Insurance	\$198 K 0.9%	\$256 K 0.9%	\$350 K 0.9%
Reading	\$68.9 K 0.3%	\$88.9 K 0.3%	\$121 K 0.3%
Shelter	\$4.07 M 19.3%	\$5.25 M 19.3%	\$7.12 M 19.3%
Tobacco	\$157 K 0.7%	\$200 K 0.7%	\$269 K 0.7%
Transportation	\$4.19 M 19.9%	\$5.42 M 19.9%	\$7.39 M 20.0%
Utilities	\$1.56 M 7.4%	\$2.00 M 7.4%	\$2.70 M 7.3%

Educational Attainment (2014)

	1 Mile	3 Miles	5 Miles
Adult Population Age 25 Years or Over	580	794	1,153
Elementary (Grade Level 0 to 8)	24 4.1%	32 4.1%	47 4.1%
Some High School (Grade Level 9 to 11)	90 15.4%	102 12.8%	117 10.1%
High School Graduate	133 22.9%	198 24.9%	314 27.2%
Some College	170 29.3%	231 29.1%	332 28.8%
Associate Degree Only	52 9.0%	72 9.1%	106 9.2%
Bachelor Degree Only	56 9.7%	86 10.8%	138 12.0%
Graduate Degree	55 9.5%	73 9.2%	100 8.7%

This report was produced using data from private and government sources deemed to be reliable. The information herein is provided without representation or warranty.

EXPANDED PROFILE

2000-2010 Census, 2014 Estimates with 2019 Projections

Calculated using Proportional Block Groups

Lat/Lon: 45.1649/-113.8929

RF5

1026 S Challis St

Salmon, ID

Units In Structure (2010)

	1 Mile		3 Miles		5 Miles	
1 Detached Unit	231	59.6%	332	64.6%	508	70.1%
1 Attached Unit	17	4.4%	20	3.9%	24	3.3%
2 to 4 Units	53	13.8%	59	11.5%	66	9.1%
5 to 9 Units	5	1.2%	6	1.1%	7	1.0%
10 to 19 Units	11	3.0%	13	2.5%	14	2.0%
20 to 49 Units	19	4.9%	20	4.0%	21	2.9%
50 or More Units	4	1.0%	5	0.9%	6	0.8%
Mobile Home or Trailer	47	12.1%	59	11.4%	78	10.8%
Other Structure	-	-	-	-	-	0.1%

Homes Built By Year (2010)

Homes Built 2005 or later	36	9.4%	45	8.8%	59	8.2%
Homes Built 2000 to 2004	9	2.2%	21	4.0%	42	5.9%
Homes Built 1990 to 1999	61	15.9%	75	14.5%	94	13.0%
Homes Built 1980 to 1989	62	16.0%	75	14.6%	95	13.1%
Homes Built 1970 to 1979	80	20.7%	114	22.2%	173	23.9%
Homes Built 1960 to 1969	15	3.8%	25	4.9%	43	5.9%
Homes Built 1950 to 1959	32	8.4%	40	7.9%	53	7.4%
Homes Built Before 1949	91	23.6%	119	23.1%	164	22.6%

Home Values (2010)

Home Values \$1,000,000 or More	13	5.8%	14	4.4%	15	3.1%
Home Values \$500,000 to \$999,999	3	1.4%	7	2.2%	13	2.7%
Home Values \$400,000 to \$499,999	10	4.2%	13	3.8%	17	3.3%
Home Values \$300,000 to \$399,999	4	1.8%	12	3.7%	27	5.4%
Home Values \$200,000 to \$299,999	22	9.6%	42	12.7%	77	15.5%
Home Values \$150,000 to \$199,999	44	19.3%	58	17.6%	79	16.0%
Home Values \$100,000 to \$149,999	41	18.0%	66	20.2%	112	22.7%
Home Values \$70,000 to \$99,999	56	24.5%	72	21.8%	96	19.4%
Home Values \$50,000 to \$69,999	18	7.8%	23	6.9%	30	6.0%
Home Values \$25,000 to \$49,999	13	5.8%	15	4.6%	17	3.4%
Home Values Under \$25,000	4	1.7%	7	2.1%	12	2.5%
Owner-Occupied Median Home Value	\$137,921		\$143,199		\$146,417	
Renter-Occupied Median Rent	\$351		\$370		\$398	

Transportation To Work (2010)

Drive to Work Alone	204	55.7%	307	61.5%	490	67.9%
Drive to Work in Carpool	67	18.2%	84	16.7%	109	15.0%
Travel to Work by Public Transportation	-	-	-	-	-	-
Drive to Work on Motorcycle	-	-	1	0.1%	1	0.2%
Walk or Bicycle to Work	54	14.8%	59	11.9%	63	8.8%
Other Means	-	-	-	-	1	0.1%
Work at Home	41	11.3%	49	9.8%	58	8.0%

Travel Time (2010)

Travel to Work in 14 Minutes or Less	182	55.8%	259	57.4%	395	59.6%
Travel to Work in 15 to 29 Minutes	56	17.1%	83	18.4%	129	19.4%
Travel to Work in 30 to 59 Minutes	72	22.0%	88	19.6%	112	16.9%
Travel to Work in 60 Minutes or More	16	5.0%	21	4.6%	28	4.2%
Average Minutes Travel to Work	9.0		9.5		9.9	

This report was produced using data from private and government sources deemed to be reliable. The information herein is provided without representation or warranty.