

BAYSIDE REALTY PARTNERS PRESENTS

# 2625 Shadelands Drive Walnut Creek, California

*Premier Medical Office Building in Walnut Creek — Shadelands*



TRASK LEONARD  
President and CEO  
650.533.2591  
[tleonard@baysiderp.com](mailto:tleonard@baysiderp.com)  
DRE#01152101



CAROLINE DOYLE  
Senior Vice President  
650.722.1495  
[cdoyle@baysiderp.com](mailto:cdoyle@baysiderp.com)  
DRE#01906397



# 2625 Shadelands Drive Walnut Creek, California

## LOCATION

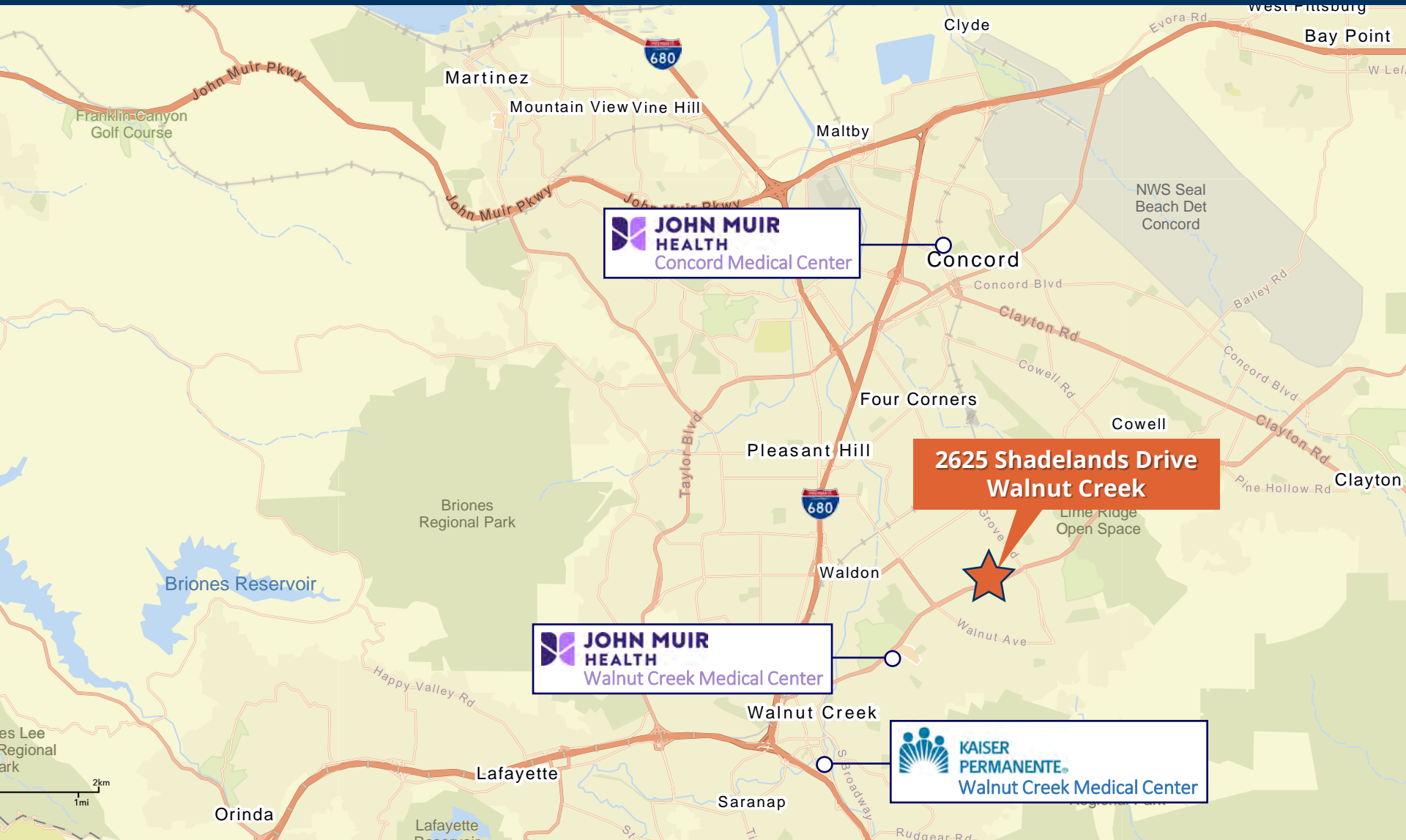
- Strategically located within the heart of medical office center in Shadelands
- One block from The Orchards shopping center—a new destination with abundant retail and neighboring new residential
- Proximity to downtown Walnut Creek, high income residential and influential medical in surrounding area



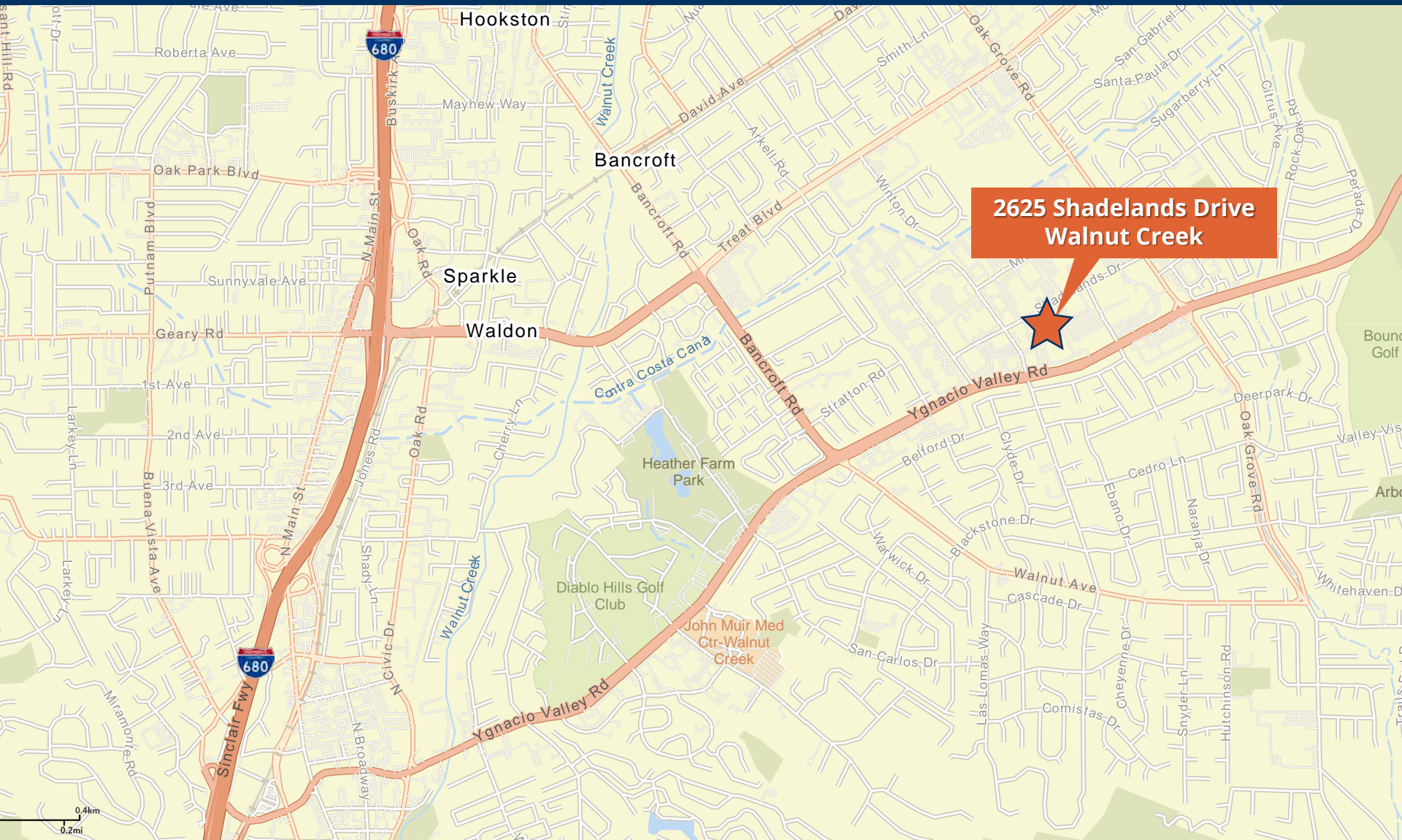
## BUILDING

- Located in one of the largest medical buildings in Shadelands
- Very convenient location with free parking for patients

# 2625 Shadelands Drive Walnut Creek, California

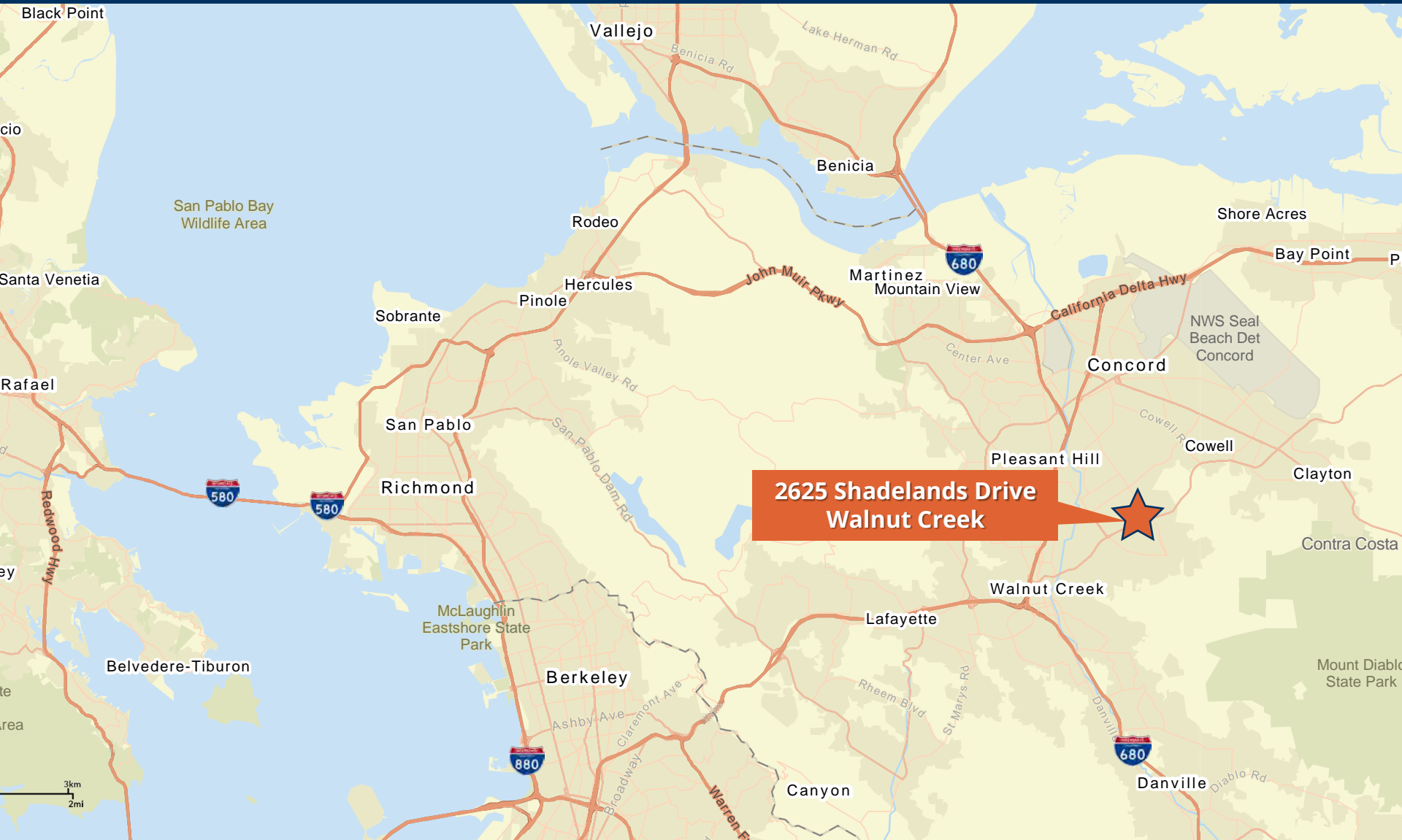


# 2625 Shadelands Drive Walnut Creek, California

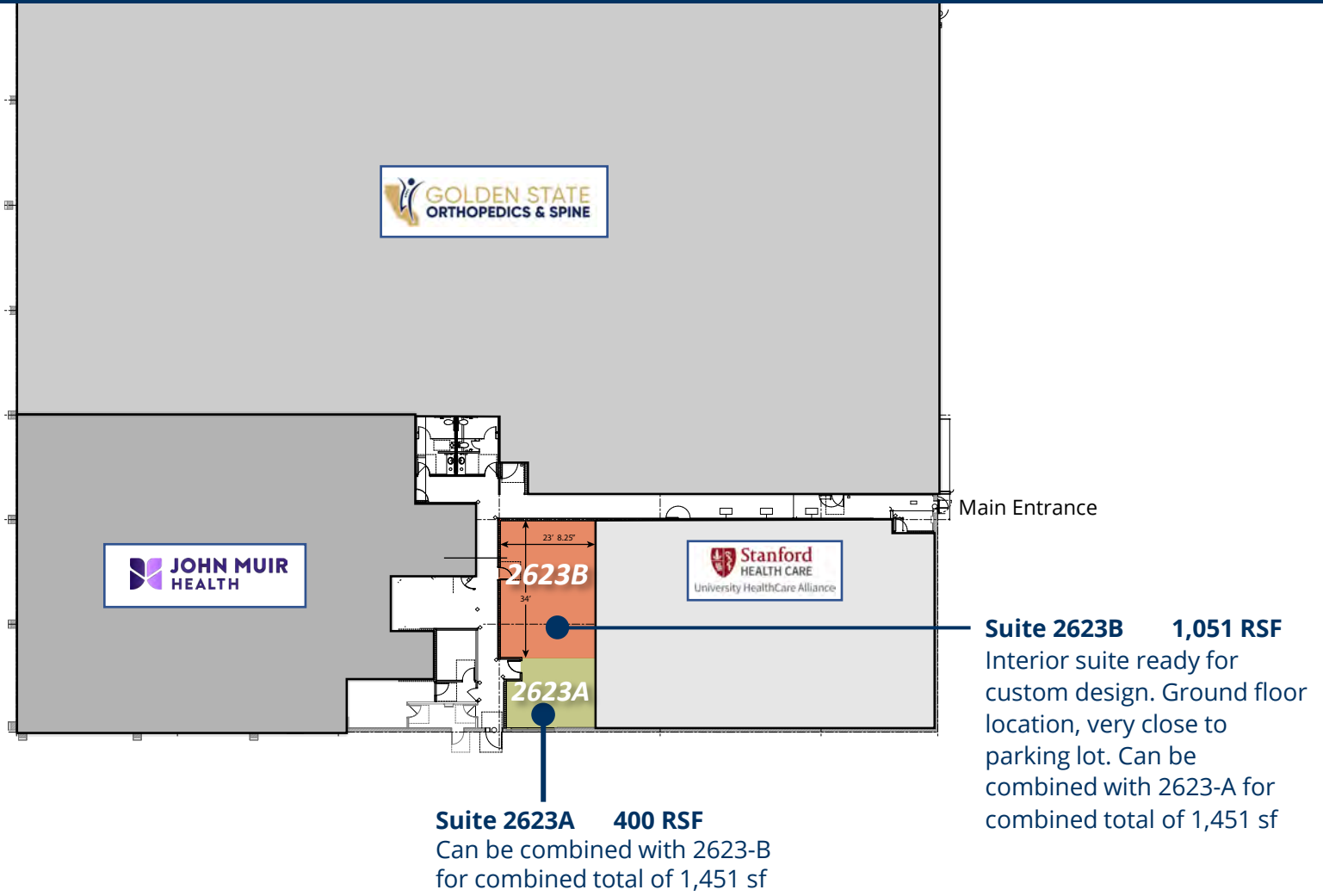


**2625 Shadelands Drive  
Walnut Creek**

# 2625 Shadelands Drive Walnut Creek, California

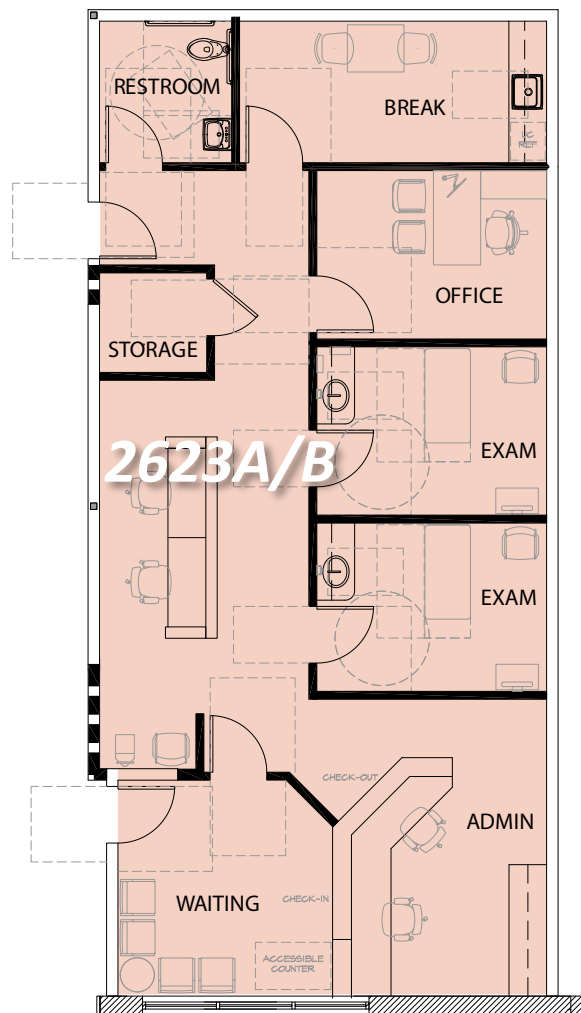
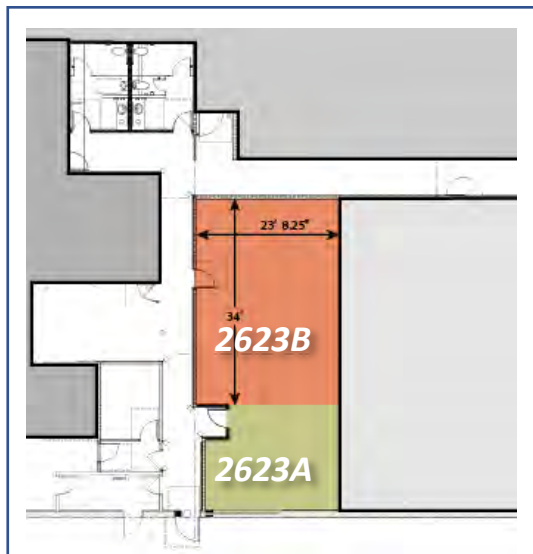


# 2625 Shadelands Drive Walnut Creek, California



# 2625 Shadelands Drive

Walnut Creek, California



**Suite 2623A/B 1,451 RSF**  
Concept plan for combined suites

# Meet Your Expert Team



TRASK LEONARD

President and CEO

650.533.2591

[tleonard@baysiderp.com](mailto:tleonard@baysiderp.com)

DRE#01152101



CAROLINE DOYLE

Senior Vice President

650.722.1495

[cdoyle@baysiderp.com](mailto:cdoyle@baysiderp.com)

DRE#01906397

**DOMINANT. EXPERT. INFLUENTIAL.**



# BAYSIDE REALTY PARTNERS

*The preeminent provider of management, leasing, construction management and accounting services for healthcare properties.*



## MARKET LEADER

- Leasing & Property Management
- Investment Sales
- Tenant Representation
- Construction Management
- Property Repositioning



## INFLUENTIAL NETWORK

- Institutional Investors
- Healthcare Systems and Healthcare Districts
- Physicians & Districts
- Private Investors



## DOMINANT FOOTPRINT

- 2 million SF leased & managed
  - 50+ MOB portfolio
  - 10,000-240,000 SF
- 500,000 SF portfolio San Francisco's largest MOB's
  - 950+ leases executed
- 500+ medical and dental tenants

**DOMINANT. EXPERT. INFLUENTIAL.**