

555 CORPORATE WOODS PARKWAY

Vernon Hills, IL

ADDITIONAL LAND FOR FUTURE EXPANSION

FOR SALE
29,639 SF

HIGH IMAGE HEADQUARTERS BUILDING



 **CONTACT US:**

STEVE STONE, SIOR
Managing Director
+1 847 720 1364
steve.stone@cushwake.com

BRETT KRONER, SIOR
Vice Chair
+1 847 720 1367
brett.kroner@cushwake.com

ERIC FISCHER
Executive Managing Director
+1 847 720 1369
eric.fischer@cushwake.com

MARC SAMUELS
Director
+1 847 720 1368
marc.samuels@cushwake.com

**555 CORPORATE
WOODS PARKWAY**



PROPERTY DETAILS

Total Available Size: 29,639 SF

Site Size: 3.68 Acres

Clear Height: 18'

Loading: 2 Exterior docks, 1 drive-in door

Year Built: 1991/2024 (Renovated)

Parking: 51 Cars

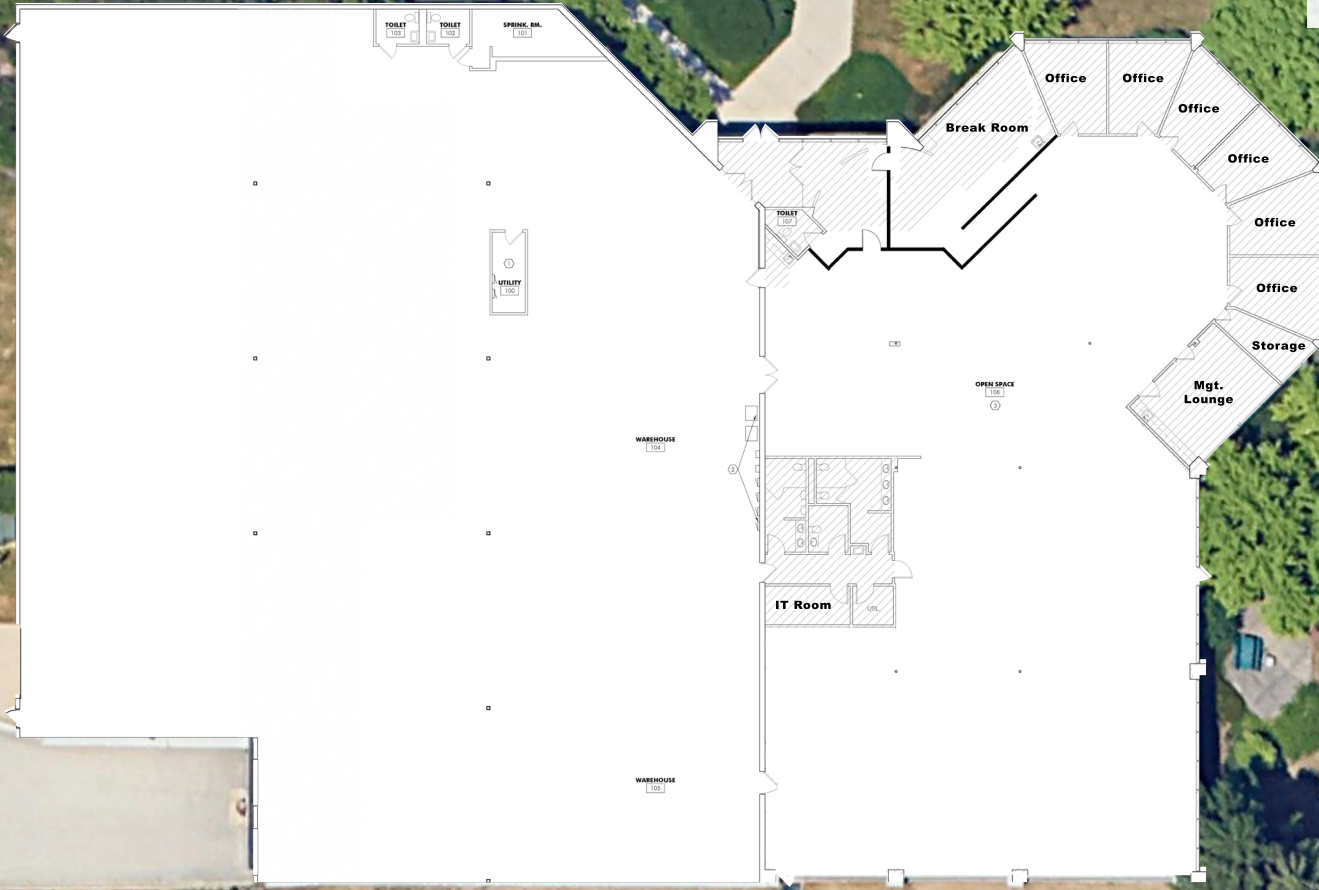
• Land for future expansion

• Near abundant amenities





• Located within Corporate Woods Business Center

• Recent renovations

SITE PLAN / FLOOR PLAN



Wall Symbol Legend

-  EXISTING WALLS TO
-  NEW INTERIOR UNDERPIN WALL
-  EXISTING DOORS TO REMAIN
-  NEW DOORS

 **CONTACT US:**

STEVE STONE, SIOR
 Managing Director
 +1 847 720 1364
 steve.stone@cushwake.com

BRETT KRONER, SIOR
 Vice Chair
 +1 847 720 1367
 brett.kroner@cushwake.com

ERIC FISCHER
 Executive Managing Director
 +1 847 720 1369
 eric.fischer@cushwake.com

MARC SAMUELS
 Director
 +1 847 720 1368
 marc.samuels@cushwake.com

AERIAL MAP



**ADDITIONAL LAND
FOR FUTURE
EXPANSION**

©2024 Cushman & Wakefield. All rights reserved. The information contained in this communication is strictly confidential. This information has been obtained from sources believed to be reliable but has not been verified. NO WARRANTY OR REPRESENTATION, EXPRESS OR IMPLIED, IS MADE AS TO THE CONDITION OF THE PROPERTY (OR PROPERTIES) REFERENCED HEREIN OR AS TO THE ACCURACY OR COMPLETENESS OF THE INFORMATION CONTAINED HEREIN, AND SAME IS SUBMITTED SUBJECT TO ERRORS, OMISSIONS, CHANGE OF PRICE, RENTAL OR OTHER CONDITIONS, WITHDRAWAL WITHOUT NOTICE, AND TO ANY SPECIAL LISTING CONDITIONS IMPOSED BY THE PROPERTY OWNER(S). ANY PROJECTIONS, OPINIONS OR ESTIMATES ARE SUBJECT TO UNCERTAINTY AND DO NOT SIGNIFY CURRENT OR FUTURE PROPERTY PERFORMANCE.

 **CONTACT US:**

STEVE STONE, SIOR
Managing Director
+1 847 720 1364
steve.stone@cushwake.com

BRETT KRONER, SIOR
Vice Chair
+1 847 720 1367
brett.kroner@cushwake.com

ERIC FISCHER
Executive Managing Director
+1 847 720 1369
eric.fischer@cushwake.com

MARC SAMUELS
Director
+1 847 720 1368
marc.samuels@cushwake.com