



Building features

- Class A office park for office/medical use
- High end finishes
- Full service cafeteria
- Fitness center
- Attended lobbies
- On-site building management
- Abundant local amenities and access to a broad labor base
- Great location just off Garden State Parkway, 1 mile to Route 3 and 5 miles to I-80/NJ Turnpike

Building size 155,937 sf

Available space 1st Floor – 14,093 sf (office/medical)
1st Floor – 10,763 sf (office/medical)
2nd Floor - 20,000 sf (divisible)

Parking 3.5 per 1,000 sf

Asking rent Please call for quote

Available Immediately

For further information

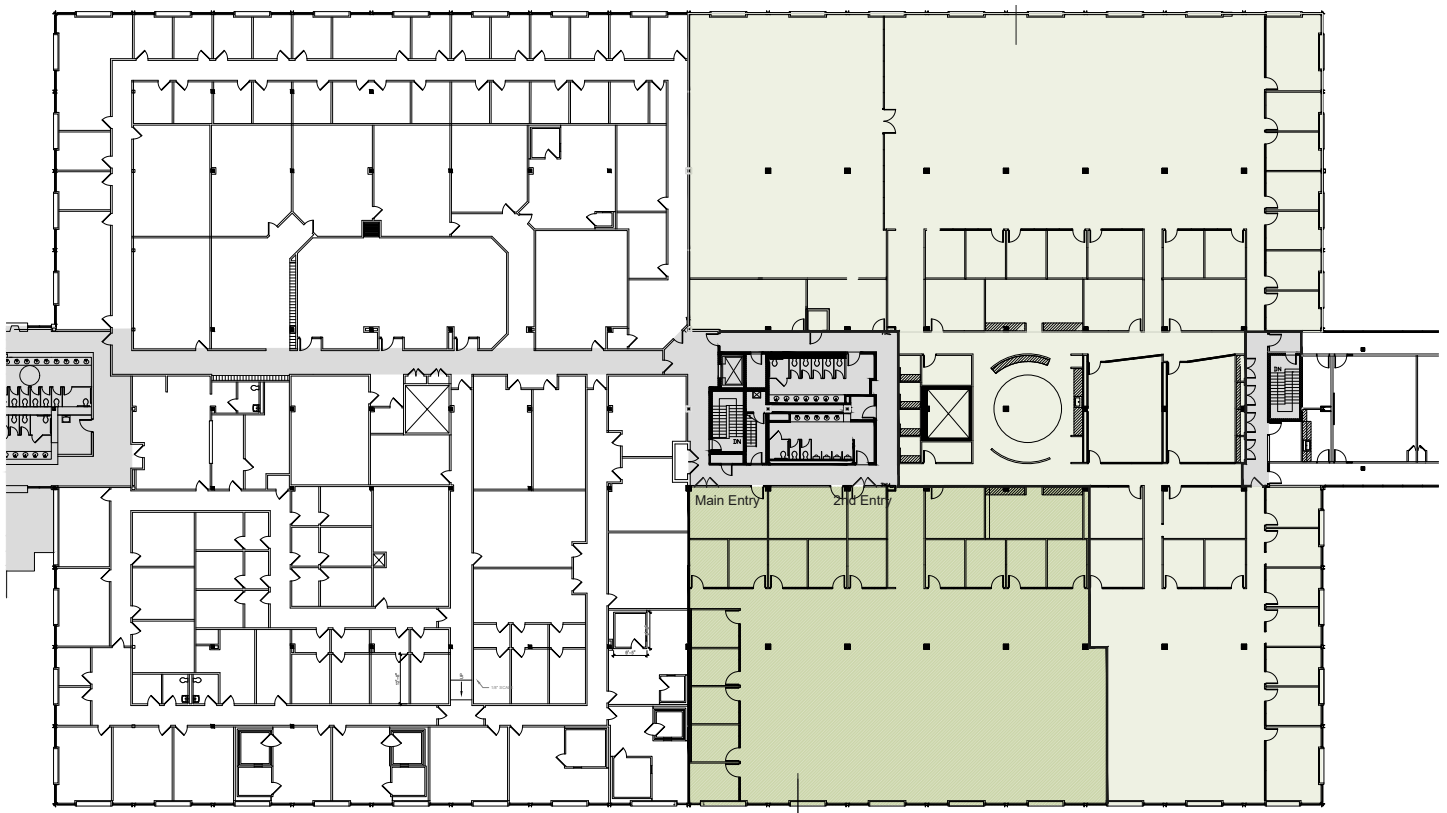
William E. McCaffrey, Principal
D +1 973 753 1102 | C +1 201 826 8861
william.mccaffrey@avisonyoung.com

Space Available For Lease

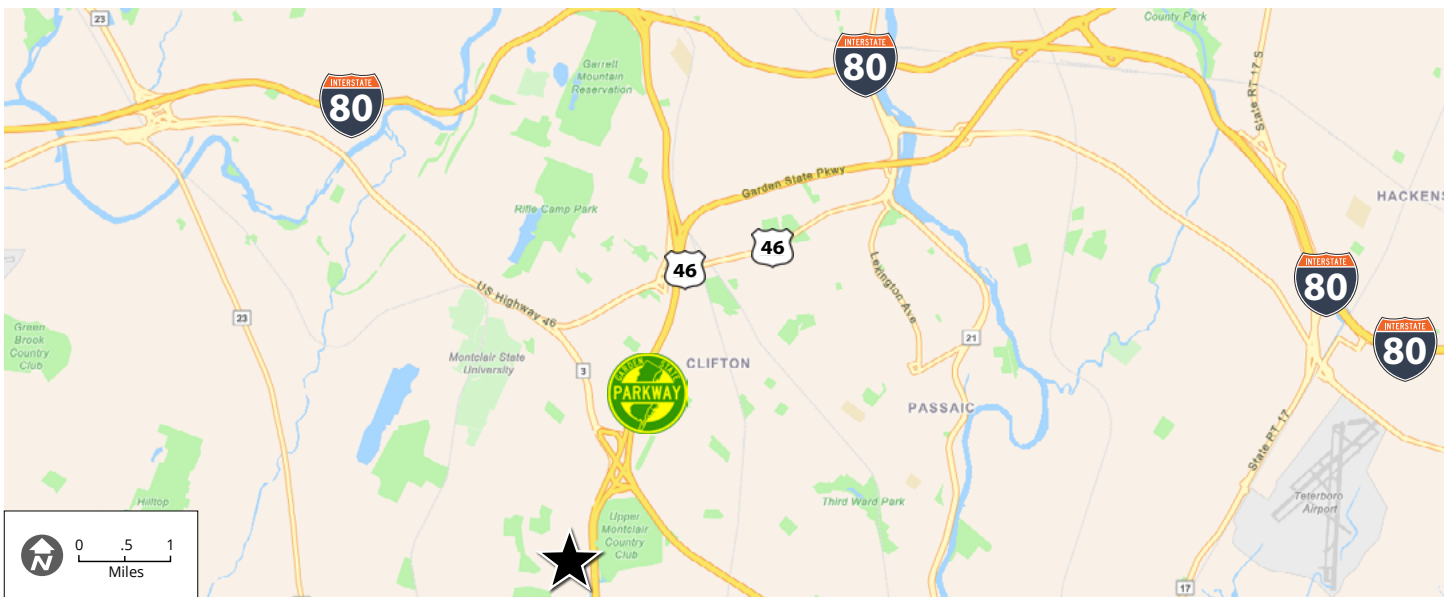
1515 Broad Street, Bldg B, Bloomfield, NJ 07003

Floor plans

Building B, Second Floor - 20,000 sf (divisible)



Location



**For further
information**

William E. McCaffrey, Principal
D +1 973 753 1102 | C +1 201 826 8861
william.mccaffrey@avisonyoung.com

**AVISON
YOUNG**