

# CORPORETUM III

## 750 WARRENVILLE ROAD

### LISLE, IL



## 2,135 - 23,087 SF Office Space Available

2,135 SF Spec Suite and 4,075 RSF White Box  
spaces available - Quick Move-Ins

Corporetum III is located south of I-88, east of IL  
Rte 53, minutes from 4-way interchange to I-88

Minutes to downtown Lisle and many  
nearby amenities



RE Development  
Solutions

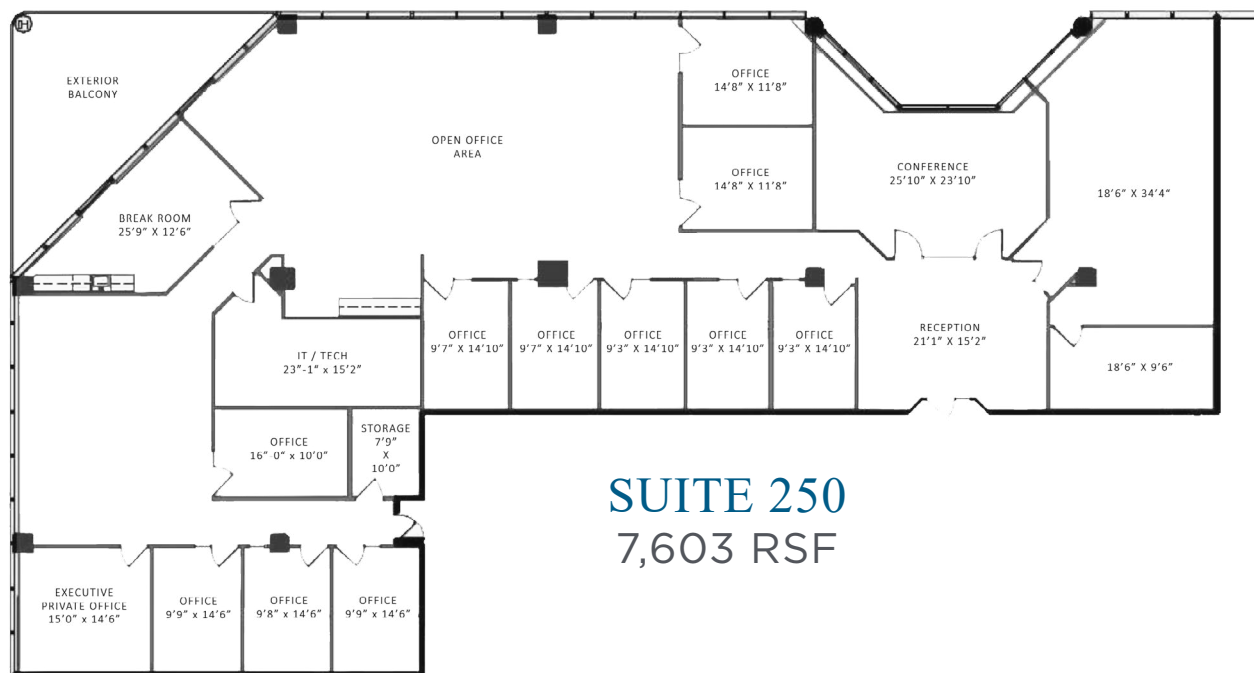
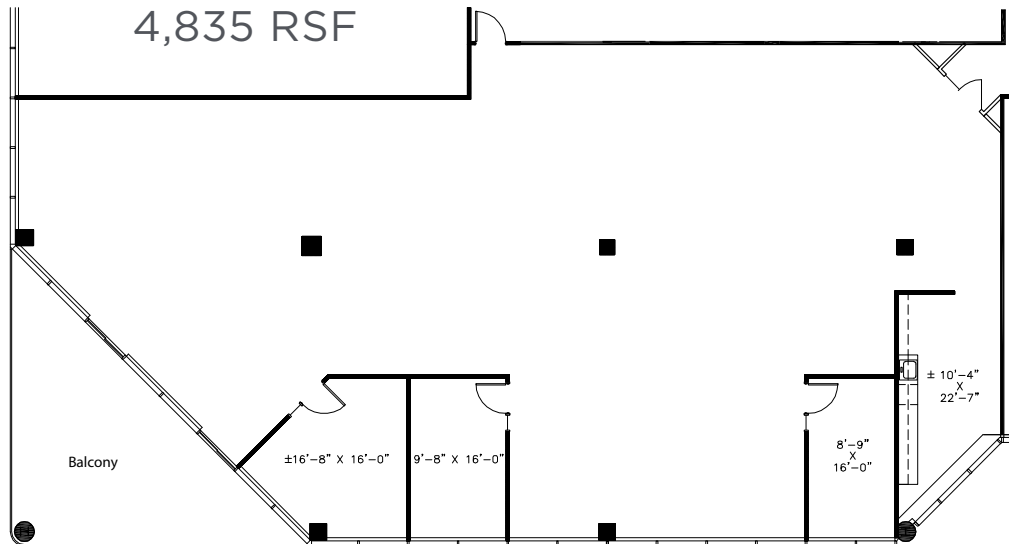
**NAI**Hoffman  
Commercial Real Estate Services, Worldwide

CORPORETUM III  
**750 WARRENVILLE ROAD**  
LISLE, IL

AVAILABLE SUITES

**SUITE 203**

4,835 RSF



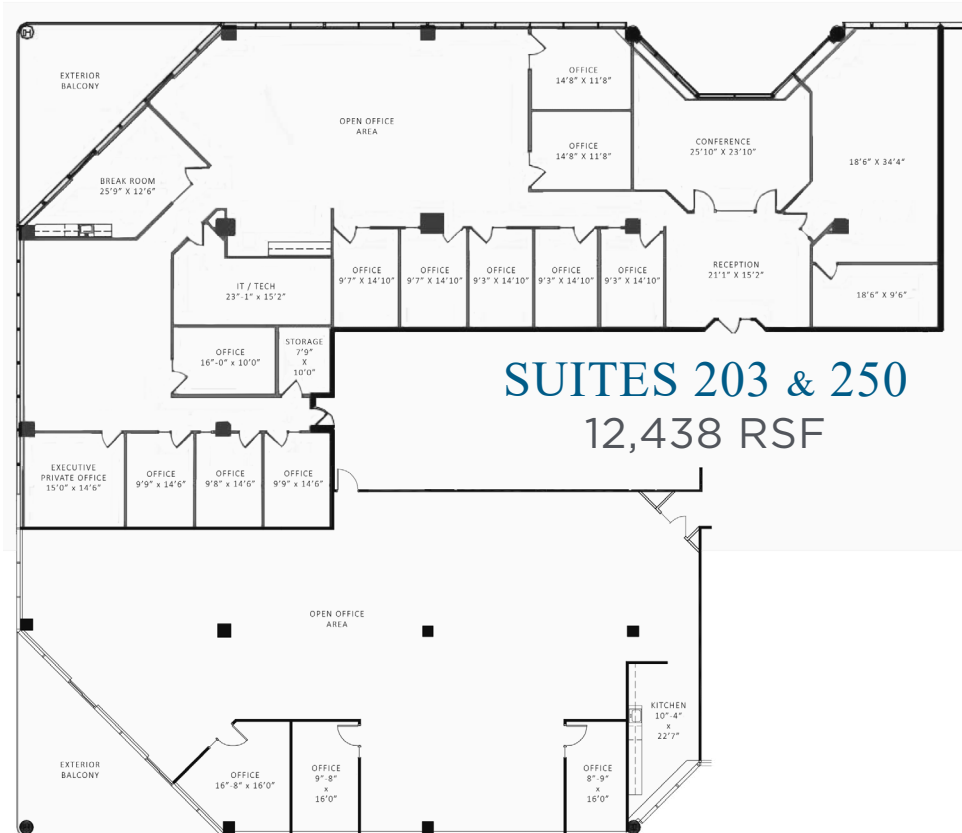
**SUITE 250**

7,603 RSF



## SUITE 200

10,649 RSF

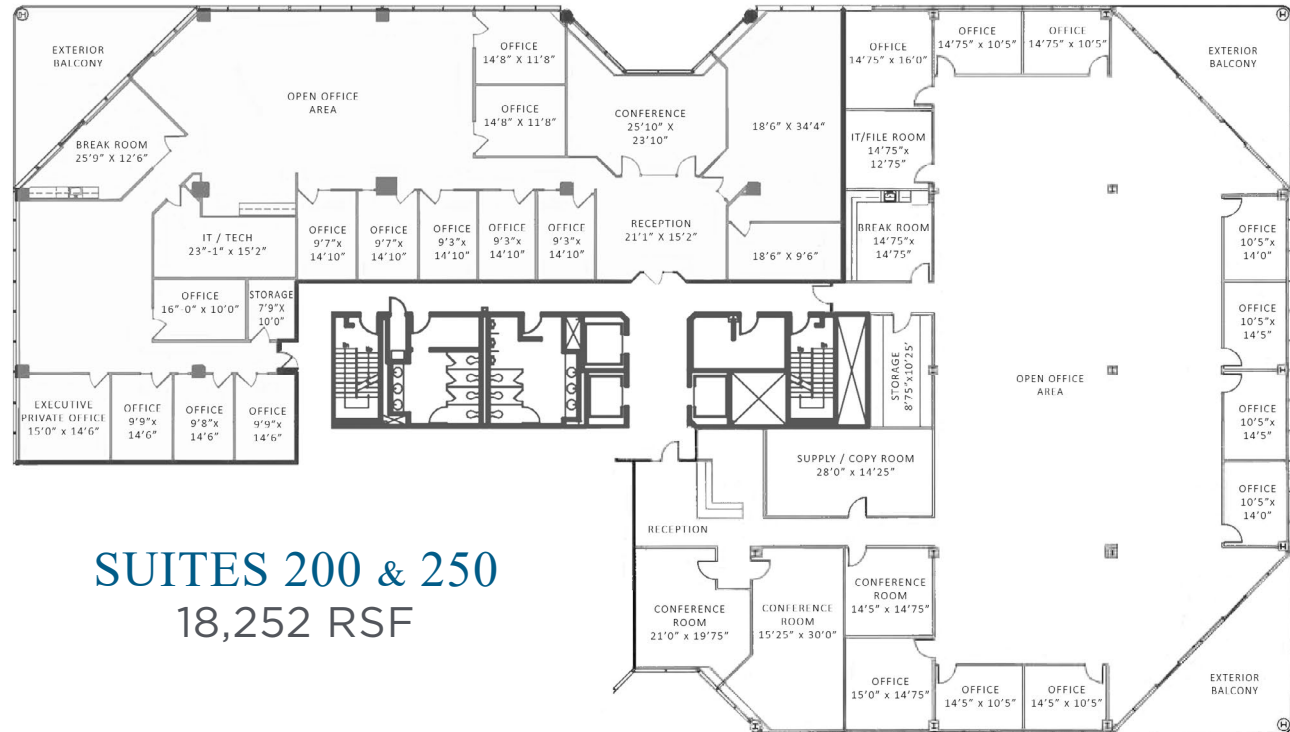
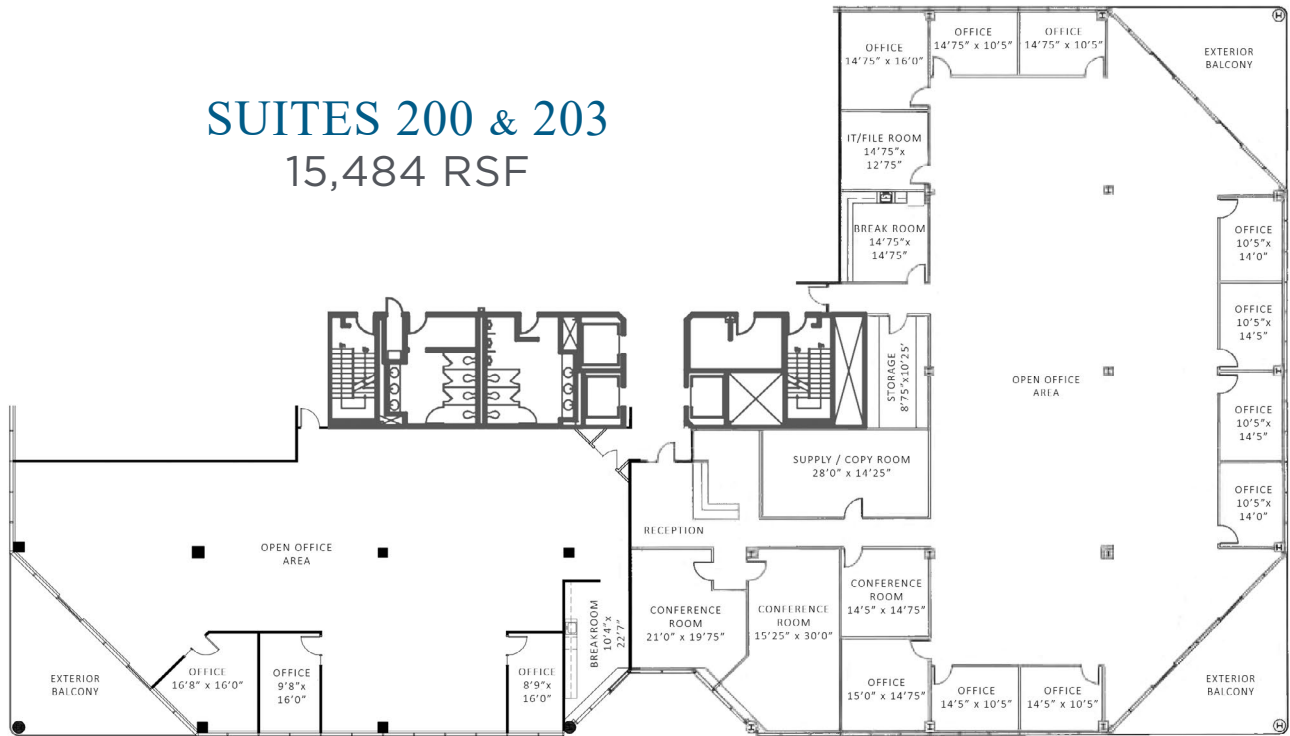


## SUITES 203 & 250

12,438 RSF

## SUITES 200 & 203

15,484 RSF

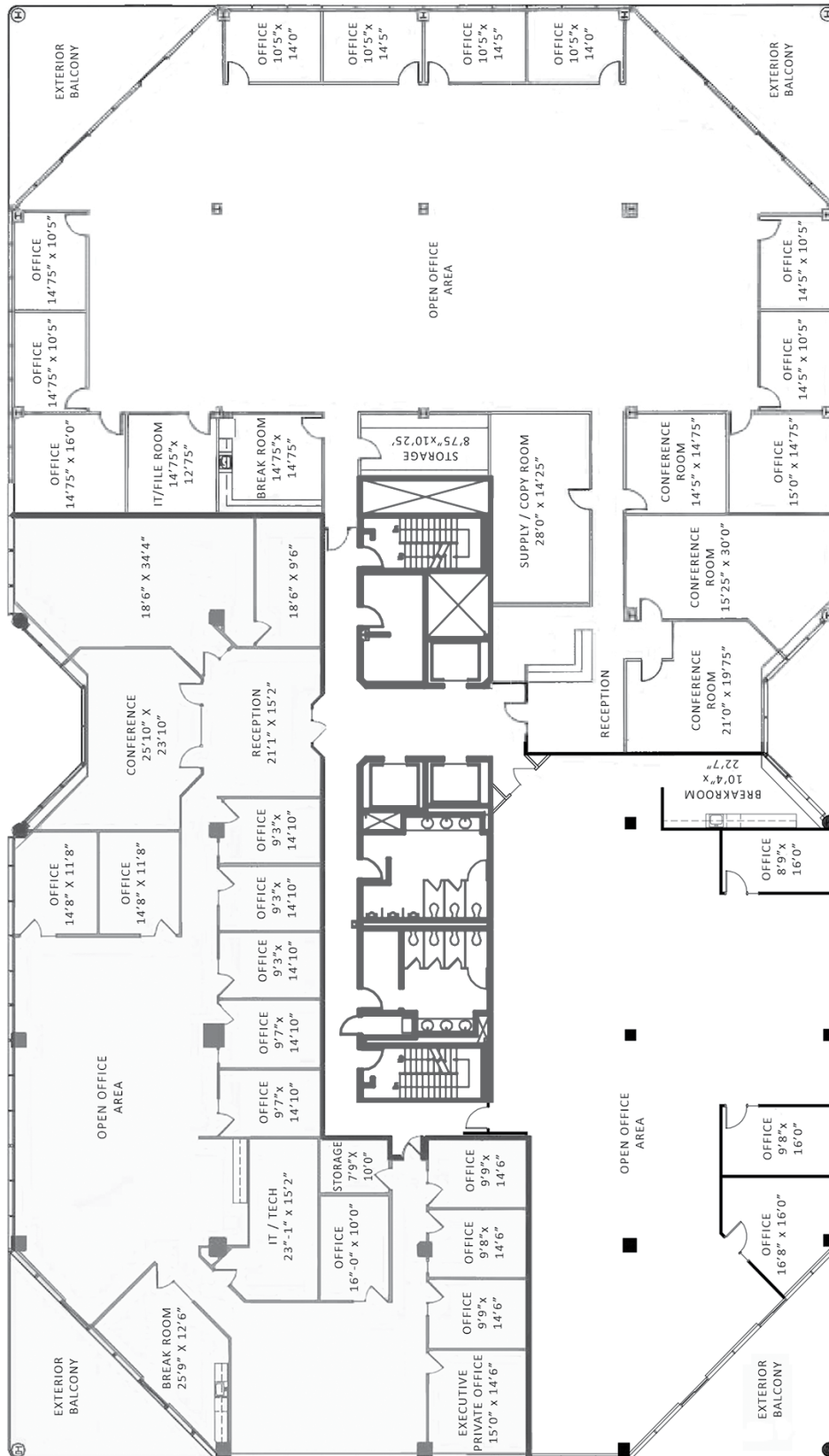


## SUITES 200 & 250

18,252 RSF

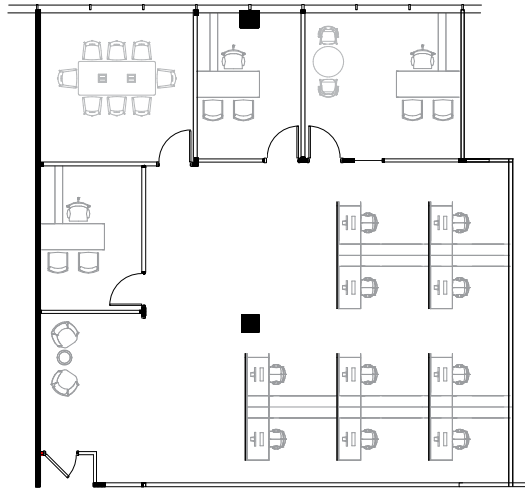
# FULL 2ND FLOOR

## 23,087 RSF



## SUITE 305

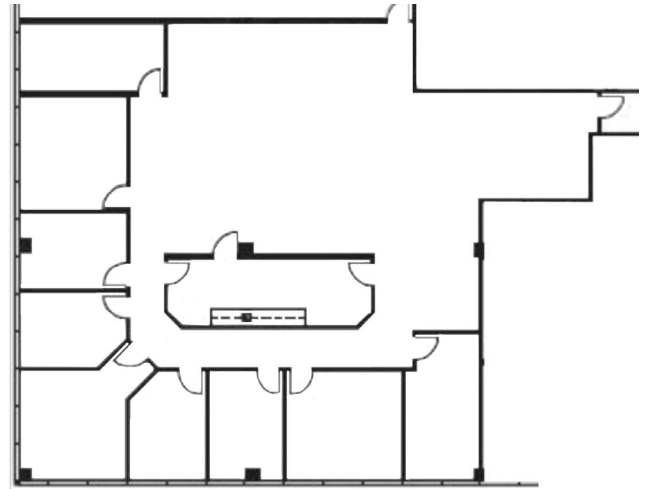
2,135 RSF - SPEC



Furniture pictured is for layout purposes only

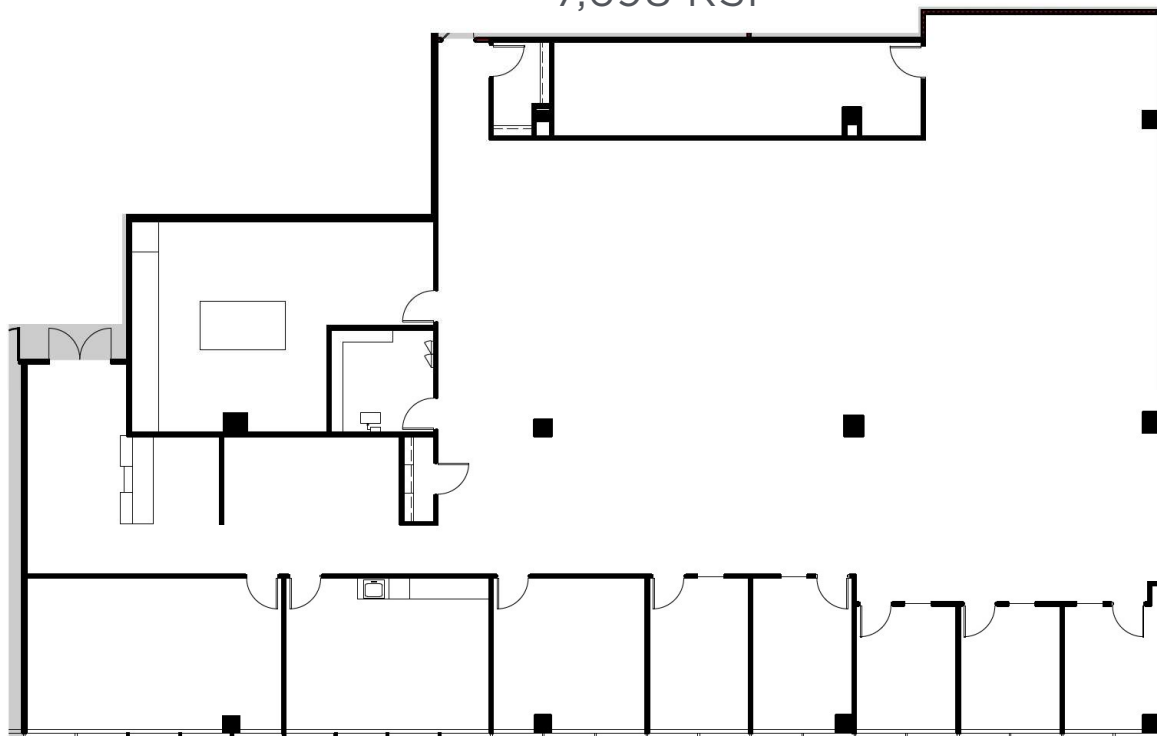
## SUITE 303

4,175 RSF

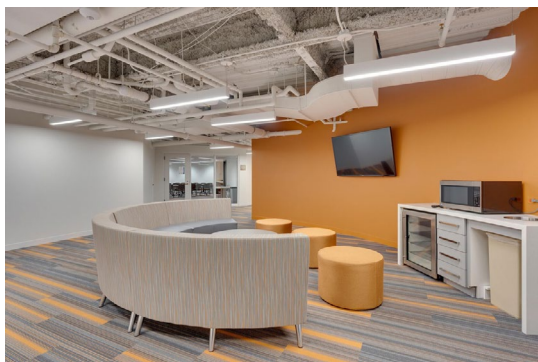


## SUITE 300

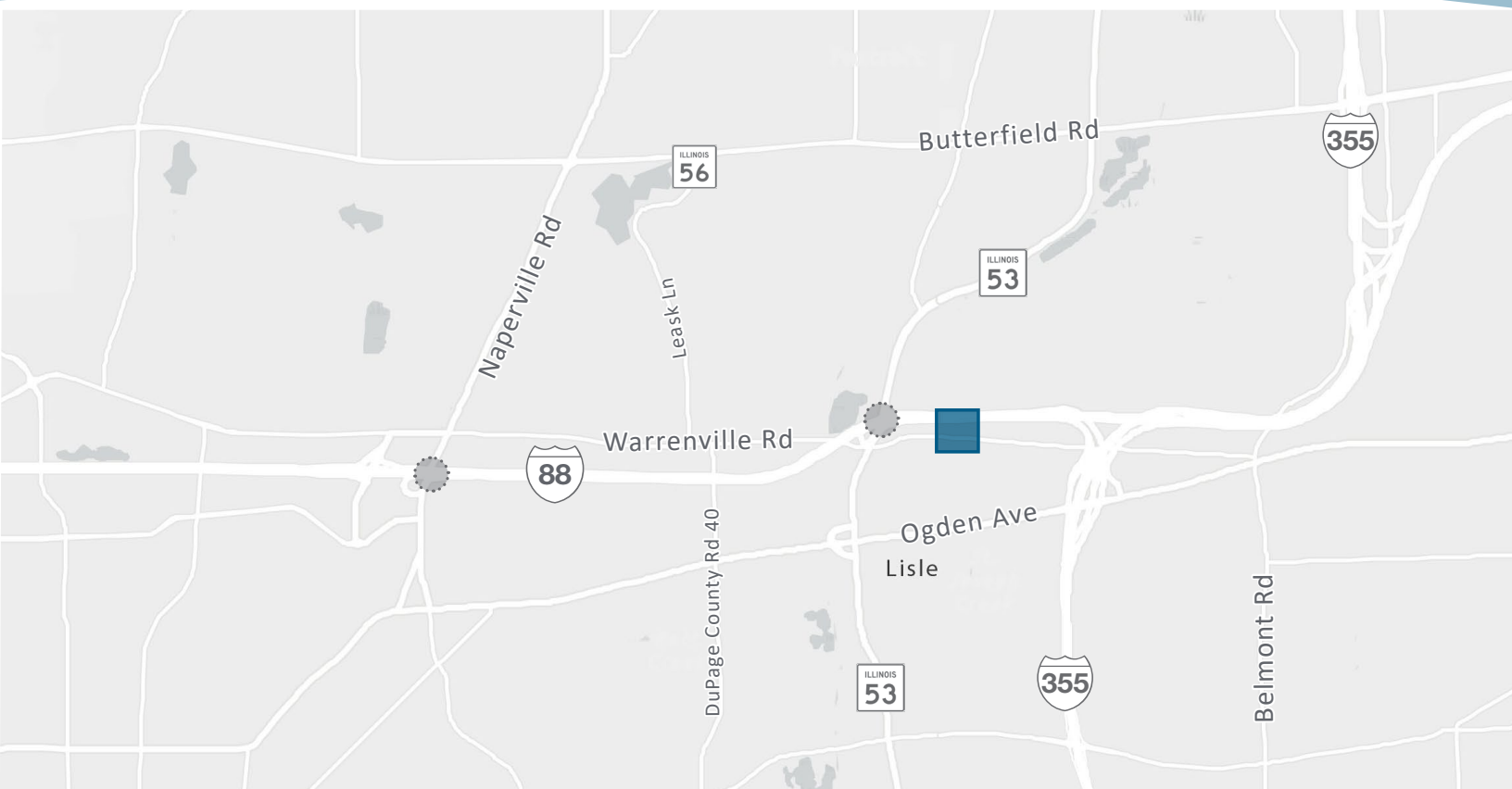
7,698 RSF











## CORPORETUM III

# 750 WARRENVILLE ROAD

### LISLE, IL

---

Located south of I-88, east of IL Rte 53,  
minutes from 4-way interchange to I-88

Building conference room

Tenant lounge

Fitness room

Views of Morton Arboretum

Institutional ownership

---

#### CONTACT

**Connor Dale**

630 317 0766  
cdale@hiffman.com

**Patrick Kiefer**

630 693 0670  
pkiefer@hiffman.com

**NAI Hiffman**  
Commercial Real Estate Services, Worldwide

One Oakbrook Terrace Suite 400  
Oakbrook Terrace, Illinois 60181  
[hiffman.com](http://hiffman.com)

AN INVESTMENT OF



RE Development  
Solutions

NO WARRANTY OR REPRESENTATION, EXPRESS OR IMPLIED, IS MADE AS TO THE ACCURACY OF THE INFORMATION CONTAINED HEREIN, AND THE SAME IS SUBMITTED SUBJECT TO ERRORS, OMISSIONS, CHANGE OF PRICE, RENTAL OR OTHER CONDITIONS, PRIOR SALE, LEASE OR FINANCING, OR WITHDRAWAL WITHOUT NOTICE, AND OF ANY SPECIAL LISTING CONDITIONS IMPOSED BY OUR PRINCIPALS NO WARRANTIES OR REPRESENTATIONS ARE MADE AS TO THE CONDITION OF THE PROPERTY OR ANY HAZARDS CONTAINED THEREIN ARE ANY TO BE IMPLIED.