



SUBJECT
PROPERTY

MEDICAL OFFICE FOR LEASE

*±1,292 SF medical office space,
walking distance to the Regional
Medical Center in San Jose*

280 N JACKSON AVE, SUITE C, SAN JOSE, CA

280 N JACKSON AVE, SUITE C



Medical Office Space Highlights

2-3 exam rooms

Possible private office

Reception and waiting area

Walking distance to Regional Medical Center

Easy access to Highway 680

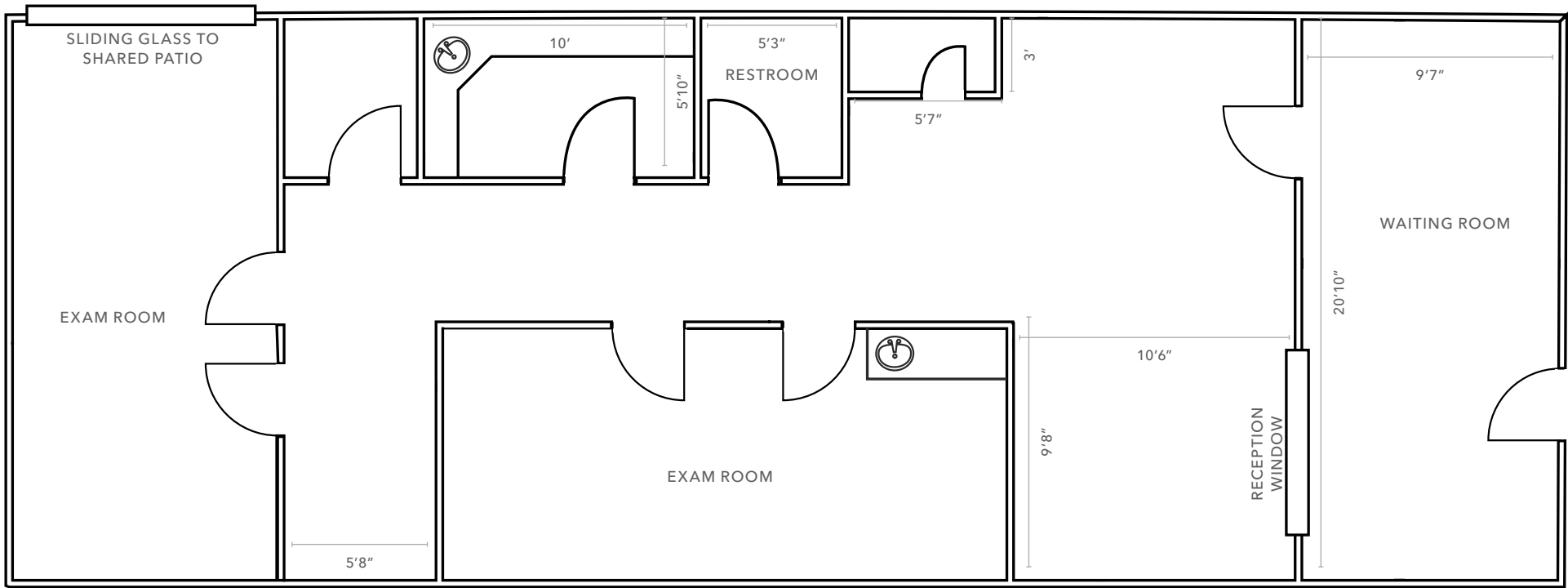
Suite front signage available

Shared rear patio area

+1,292 SF
SUITE C

FLOOR PLAN | SUITE C

±1,292 SF



FLOOR PLAN NOT TO SCALE



280 N JACKSON AVE SUITE C

Exclusively listed by

AARON FRITZ, CCIM
408.588.2398
aaron.fritz@kidder.com
LIC N° 01216555

CONOR BURLING
408.588.2341
conor.burling@kidder.com
LIC N° 02235389

KIDDER.COM

This information supplied herein is from sources we deem reliable. It is provided without any representation, warranty, or guarantee, expressed or implied as to its accuracy. Prospective Buyer or Tenant should conduct an independent investigation and verification of all matters deemed to be material, including, but not limited to, statements of income and expenses. Consult your attorney, accountant, or other professional advisor. All Kidder Mathews designs are the sole property of Kidder Mathews. Branded materials and layouts are not authorized for use by any other firm or person.

