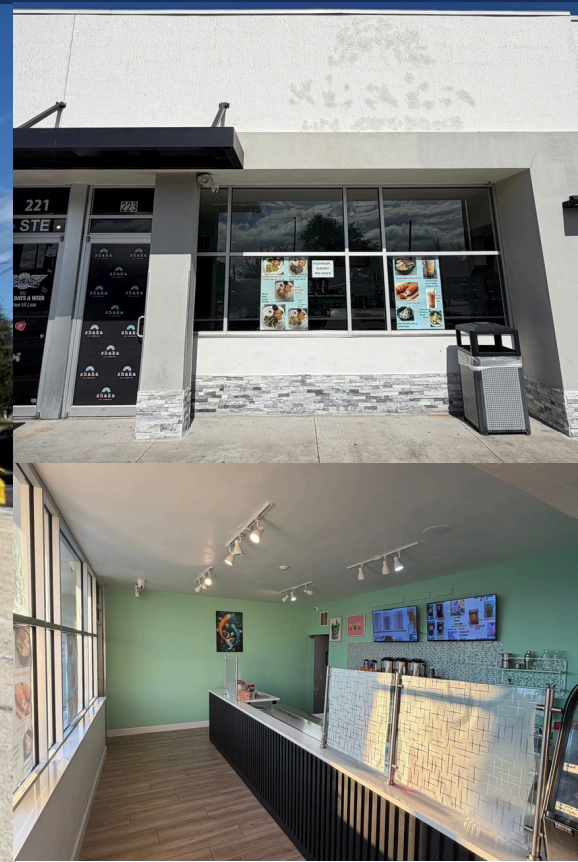


Retail Space for Sublease

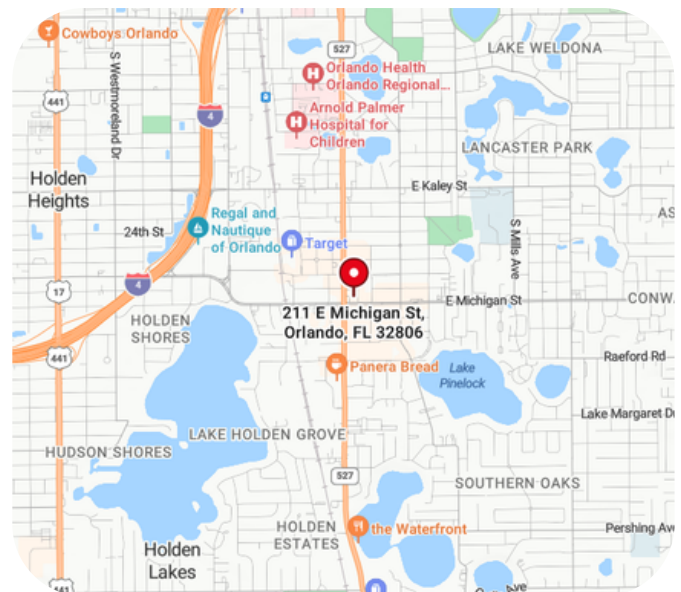


211 E Michigan St, Orlando, FL 32806



Features

- **Available:** Suite 223
- **Available SF:** 1,000 SF
- **Suite includes:** Front retail/counter area (~20%) with a larger rear storage or work area (~80%), measuring approximately 20' x 50'.
- **Rate:** \$30 PSF MG
- Term is flexible.
- **Zoning:** Commercial --AC-2/T/S-P
- Prime ±1,000 SF retail space in the high-traffic SODO corridor near Downtown Orlando.
- Space has a private entrance, storefront and building signage, and a separate electric meter. Currently connected to an adjacent suite via walkway, with shared bathrooms and seating available with the neighboring Vietnamese restaurant.
- Ideal for quick-service food users not requiring a hood (e.g., cafés), as well as retail or service uses such as florists, cell phone repair, or other storage-oriented retail concepts.



Jordan Characo - Advisor

Mobile 407.421.2871 | characo@equity.net

189 S Orange Ave
Unit 2030 S
Orlando, FL 32801