



# ±6,500 SF Church Space For Lease

876 OSBORNE STREET, VISTA, CA 92084



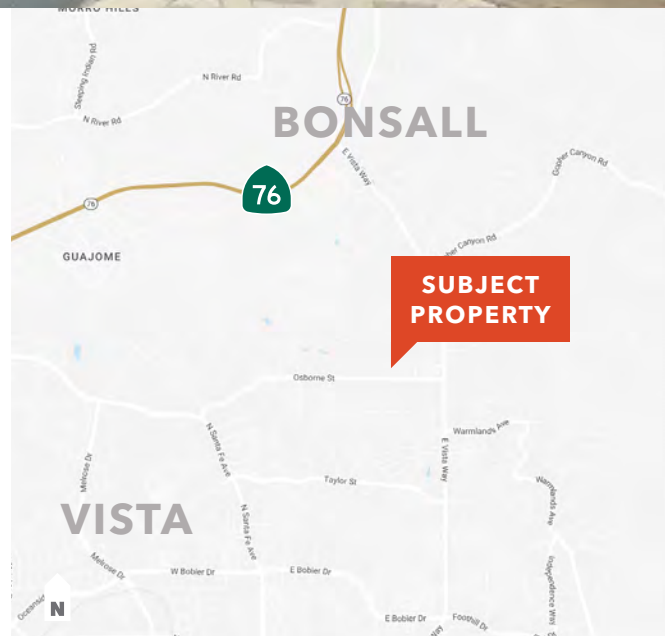
## Property Highlights

Shared-use church space on church campus for lease in Vista, CA. Space includes a sanctuary, a fellowship hall, a kitchen, several classrooms, an office, and a large on-site parking lot. Available Sundays, Saturdays and select weeknights. See next page for details and contact agent for more information. Please do not disturb the church.

**RILEY ROHDE**  
858.369.3041  
[riley.rohde@kidder.com](mailto:riley.rohde@kidder.com)  
LIC N° 02207141

**ROBERT FLETCHER**  
858.369.3034  
[robert.fletcher@kidder.com](mailto:robert.fletcher@kidder.com)  
LIC N° 01706060

**ERIC KNOWLES**  
858.369.3017  
[eric.knowles@kidder.com](mailto:eric.knowles@kidder.com)  
LIC N° 00944210



This information supplied herein is from sources we deem reliable. It is provided without any representation, warranty, or guarantee, expressed or implied as to its accuracy. Prospective Buyer or Tenant should conduct an independent investigation and verification of all matters deemed to be material, including, but not limited to, statements of income and expenses. Consult your attorney, accountant, or other professional advisor.

**Kidder Mathews**

**FOR LEASE**

# ±6,500 SF Church Space

876 OSBORNE STREET, CA 92084

## PROPERTY SUMMARY

|                                |  |
|--------------------------------|--|
| Space Available<br>(±6,500 SF) | Sanctuary seats ±250; six (6) classrooms, fellowship hall, kitchen & office with storage space available |
| Days / Hours Available         | Saturdays:<br>All day<br><br>Sundays:<br>4pm - 9pm<br><br>Weeknights:<br>Most evenings available         |
| Term                           | Flexible   |
| Parking                        | Large on-site parking lot  |
| Janitorial                     | Tenant responsible for cleaning after each use   |
| Non - Profit                   | Tenant must be a non - profit entity   |
| Utilities                      | Tenant to pay its share of utilities   |
| Tours                          | Contact agent for touring instructions   |
| Lease Rate                     | Negotiable<br>(rate depends on days, hours, amount of space used & total occupancy)                      |



**RILEY ROHDE**

858.369.3041

[riley.rohde@kidder.com](mailto:riley.rohde@kidder.com)

LIC N° 02207141

**ROBERT FLETCHER**

858.369.3034

[robert.fletcher@kidder.com](mailto:robert.fletcher@kidder.com)

LIC N° 01706060

**ERIC KNOWLES**

858.369.3017

[eric.knowles@kidder.com](mailto:eric.knowles@kidder.com)

LIC N° 00944210

**KIDDER.COM**

This information supplied herein is from sources we deem reliable. It is provided without any representation, warranty, or guarantee, expressed or implied as to its accuracy. Prospective Buyer or Tenant should conduct an independent investigation and verification of all matters deemed to be material, including, but not limited to, statements of income and expenses. Consult your attorney, accountant, or other professional advisor.

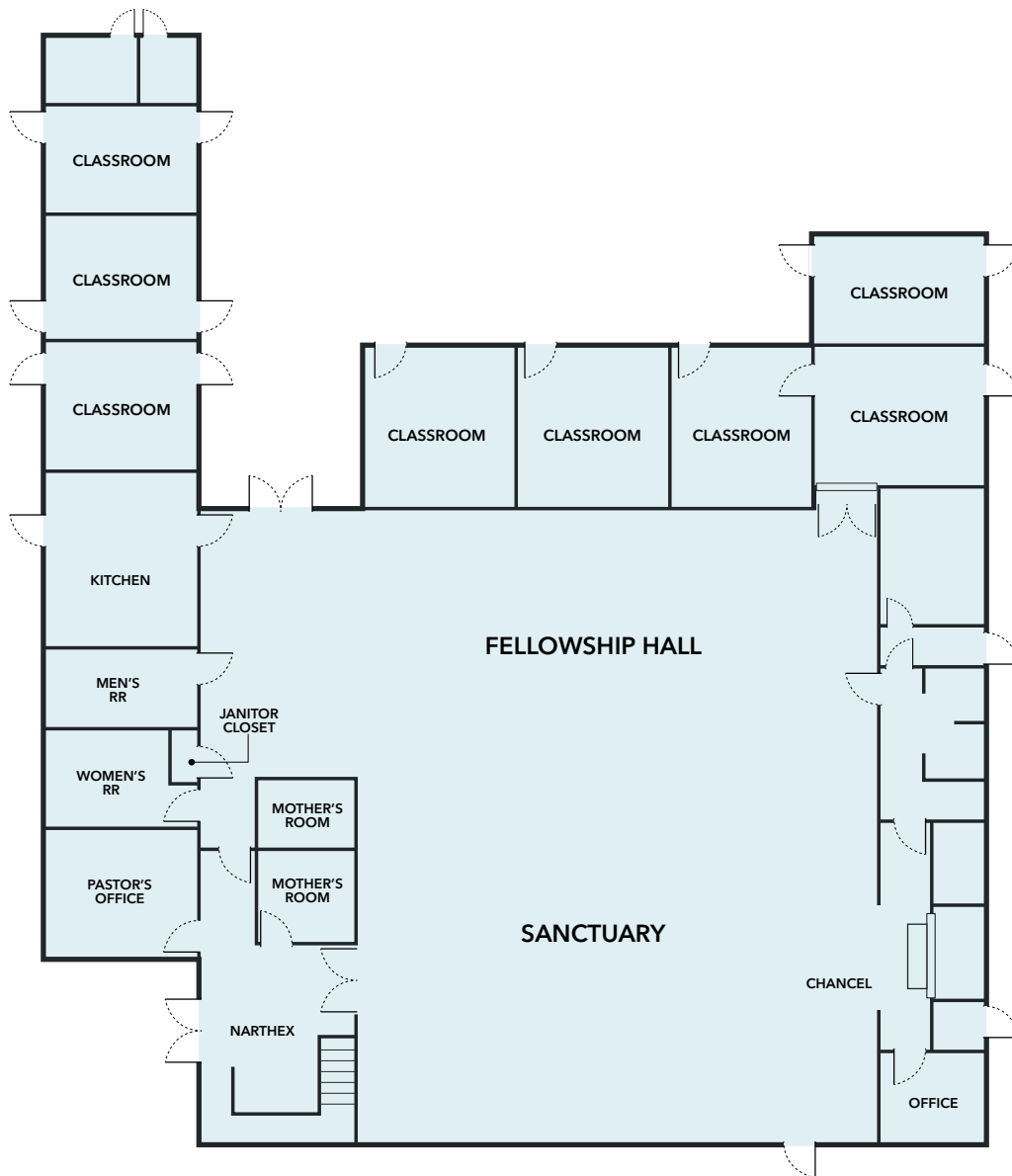
**km Kidder Mathews**

**FOR LEASE**

# ±6,500 SF Church Space

876 OSBORNE STREET, CA 92084

## Floor Plan



**RILEY ROHDE**  
858.369.3041  
[riley.rohde@kidder.com](mailto:riley.rohde@kidder.com)  
LIC N° 02207141

**ROBERT FLETCHER**  
858.369.3034  
[robert.fletcher@kidder.com](mailto:robert.fletcher@kidder.com)  
LIC N° 01706060

**ERIC KNOWLES**  
858.369.3017  
[eric.knowles@kidder.com](mailto:eric.knowles@kidder.com)  
LIC N° 00944210

**KIDDER.COM**

This information supplied herein is from sources we deem reliable. It is provided without any representation, warranty, or guarantee, expressed or implied as to its accuracy. Prospective Buyer or Tenant should conduct an independent investigation and verification of all matters deemed to be material, including, but not limited to, statements of income and expenses. Consult your attorney, accountant, or other professional advisor.

