

10356 W. WARREN AVENUE
DEARBORN, MICHIGAN

OFFICE FOR LEASE
1,400 Square Feet Available



**SIGNATURE
ASSOCIATES**
KNOW SIGNATURE | KNOW RESULTS

DOWNTOWN DEARBORN



PROPERTY FEATURES

- 1,400 square feet available
- Recently updated office space
- Very active retail and office location with option to lease individual offices starting at \$1,000/month
- Entire building can also be leased with 7 private parking spaces
- Lease Rate: \$1,000-\$4,000/month NNN



For more information, please contact:

JUSTIN GAFFREY
(248) 799 3143
jgaffrey@signatureassociates.com

SIGNATURE ASSOCIATES
One Towne Square, Suite 1200
Southfield, MI 48076
www.signatureassociates.com

10356 W. Warren Avenue – Dearborn, Michigan

Office For Lease

1,400
Square Feet
AVAILABLE

Interior Photos



For more information, please contact:

JUSTIN GAFFREY
(248) 799 3143
jgaffrey@signatureassociates.com

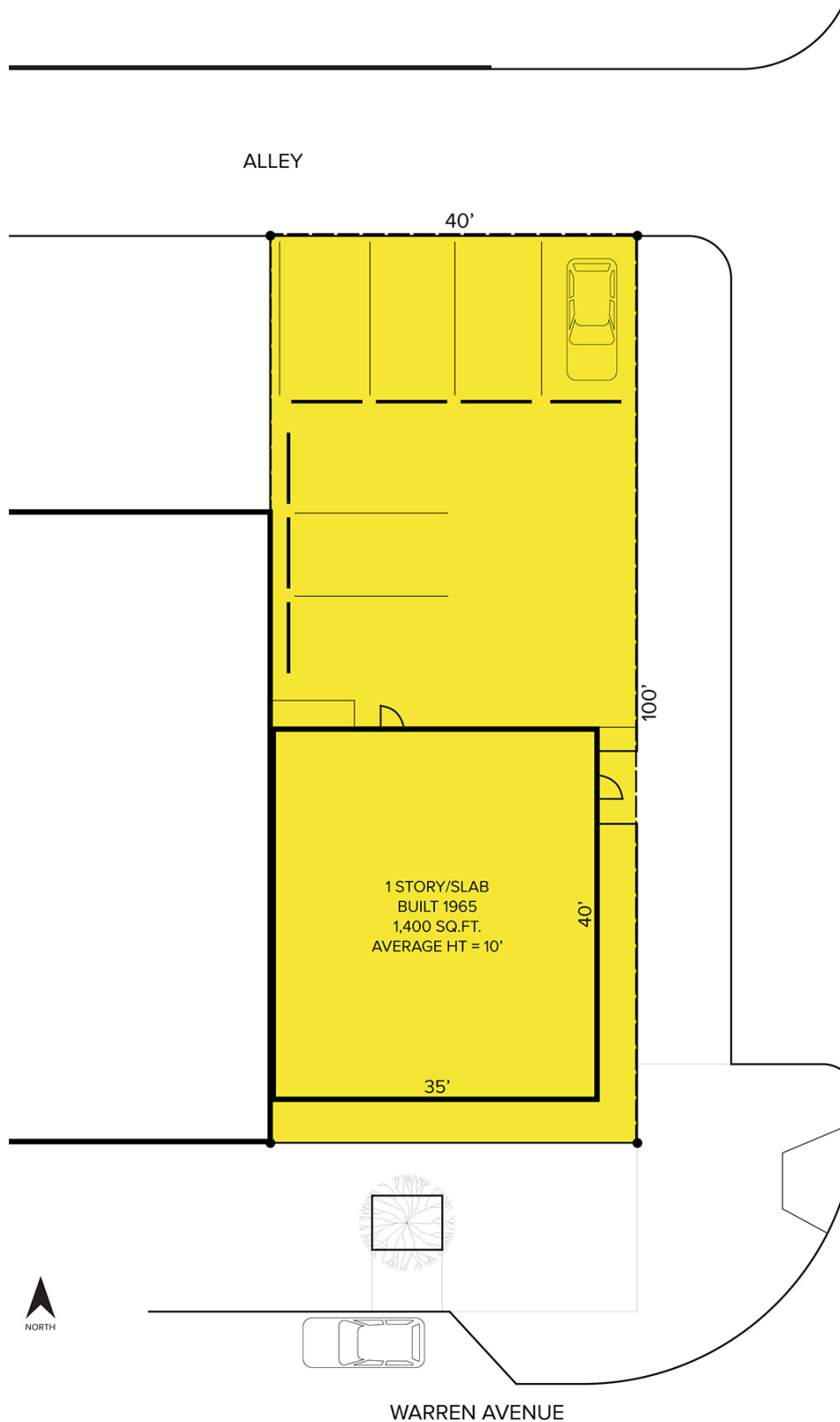
SIGNATURE ASSOCIATES
One Towne Square, Suite 1200
Southfield, MI 48076
www.signatureassociates.com

10356 W. Warren Avenue – Dearborn, Michigan

Office For Lease

1,400
Square Feet
AVAILABLE

Site Plan



For more information, please contact:

JUSTIN GAFFREY
(248) 799 3143
jgaffrey@signatureassociates.com

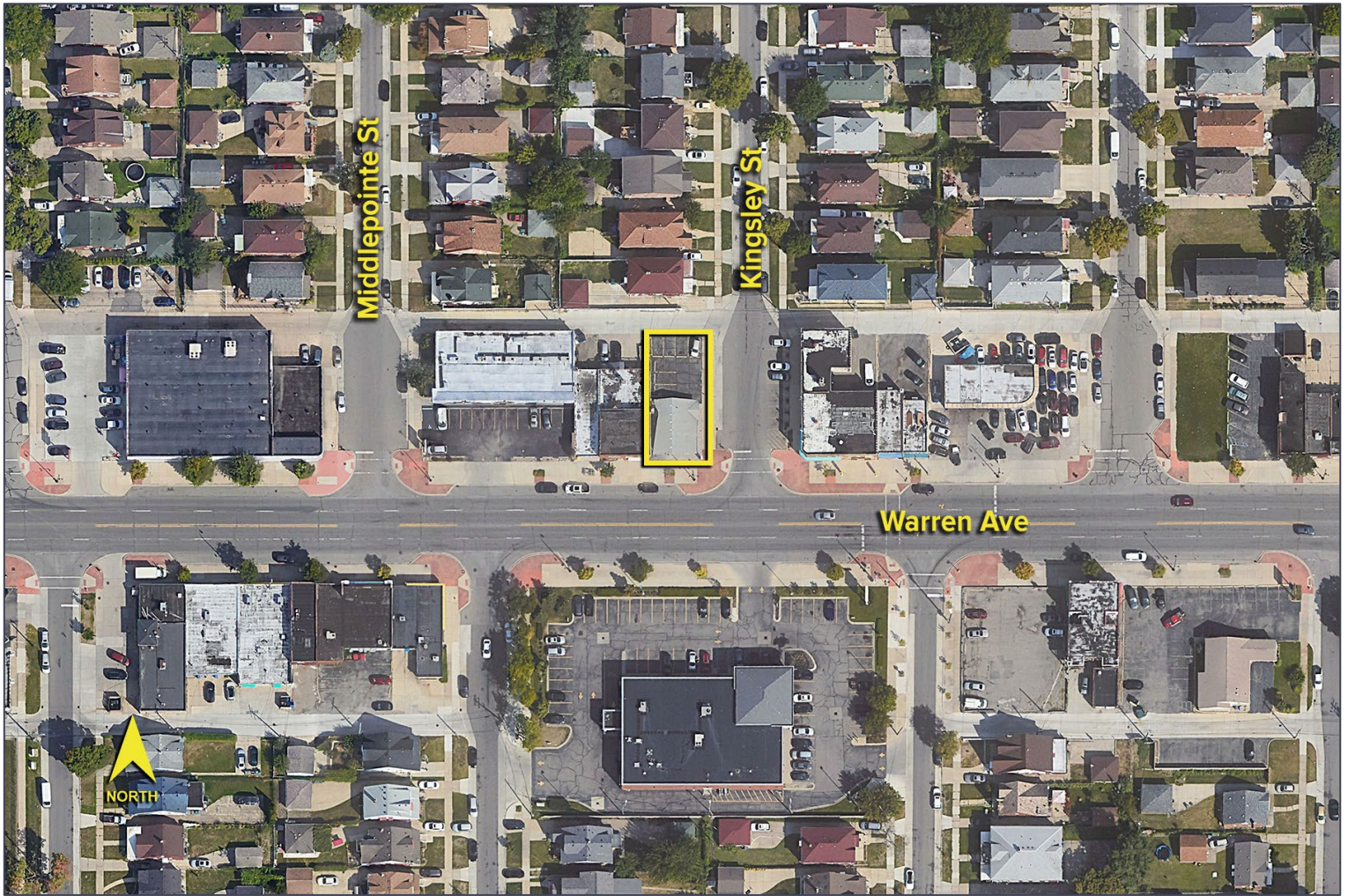
SIGNATURE ASSOCIATES
One Towne Square, Suite 1200
Southfield, MI 48076
www.signatureassociates.com

10356 W. Warren Avenue – Dearborn, Michigan

Office For Lease

1,400
Square Feet
AVAILABLE

Aerial



For more information, please contact:

JUSTIN GAFFREY
(248) 799 3143
jgaffrey@signatureassociates.com

SIGNATURE ASSOCIATES
One Towne Square, Suite 1200
Southfield, MI 48076
www.signatureassociates.com