

Elite Chiropractic

10415 SOUTHEAST STARK STREET, SUITE F, PORTLAND, OR 97216



Joe Kappler
503.972.7294
joek@macadamforbes.com
Licensed in OR & WA

Charles Haselwood
503.515.6959
charles@macadamforbes.com
Licensed in OR

2 Centerpointe Drive, Suite 500 | Lake Oswego, OR 97035 | WWW.MACADAMFORBES.COM | 503.227.2500

All of the information contained herein was obtained either from the owner or other parties we consider reliable. We have no reason to doubt its accuracy; however we do not guarantee it.

FOR
SUBLEASE

 **MACADAM
FORBES**
COMMERCIAL REAL ESTATE SERVICES

FOR SUBLEASE

10415 Southeast Stark Street, Suite F, Portland, OR 97216

PROPERTY DESCRIPTION

Discover the perfect space for your business with this versatile and adaptable layout suitable for a variety of uses. With ample natural light, high ceilings, and modern finishes, this space provides a welcoming environment for customers and employees alike. The thoughtful floor plan maximizes the overall space, while the convenient amenities of a washer/dryer, break room, and private bath elevate the potential.

PROPERTY HIGHLIGHTS

- Strong location surrounded by other Medical offices
- Versatile layout for various uses
- Ample natural light and high ceilings
- Modern finishes and welcoming environment
- Convenient amenities for employees and visitors
- Prominent space for business visibility

OFFERING SUMMARY

Lease Rate:	\$2,652.25 per month (NNN)
Available SF:	1,250 SF
Building Size:	5,854 SF
Sublease Term Expiration:	August 31st, 2028



Joe Kappler

503.972.7294

joek@macadamforbes.com
Licensed in OR & WA

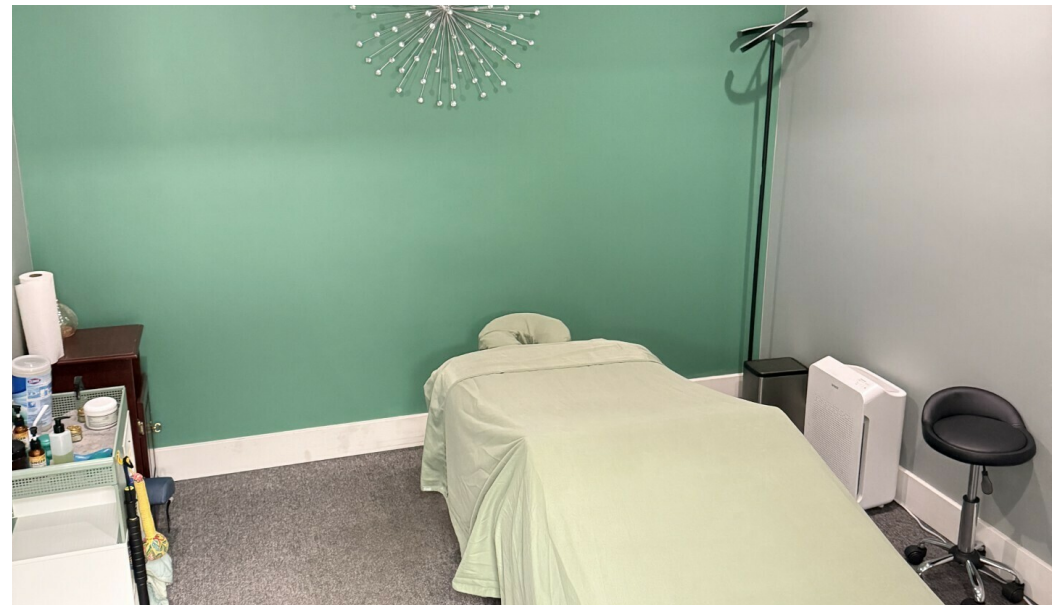
Charles Haselwood

503.515.6959

charles@macadamforbes.com
Licensed in OR

FOR SUBLEASE

10415 Southeast Stark Street, Suite F, Portland, OR 97216



Joe Kappler

503.972.7294

joek@macadamforbes.com

Licensed in OR & WA

Charles Haselwood

503.515.6959

charles@macadamforbes.com

Licensed in OR

All of the information contained herein was obtained either from the owner or other parties we consider reliable. We have no reason to doubt its accuracy, however we do not guarantee it.

MACADAMFORBES.COM | 503.227.2500

FOR LEASE

10415 Southeast Stark Street, Suite F, Portland, OR 97216



LOCATION OVERVIEW

Located in a high-traffic area with excellent visibility in the Gateway submarket, this medical-ready office space offers an easy plug-and-play option for a business-minded professional. Convenient transportation options make commuting a breeze, while the dynamic medical business community provides valuable networking opportunities.



Joe Kappler

503.972.7294

joek@macadamforbes.com

Licensed in OR & WA

Charles Haselwood

503.515.6959

charles@macadamforbes.com

Licensed in OR