

Flex space for **Lease**

Pointe West I

Davie, FL 33331

AVAILABILITIES

Building 1, Suite 100: 7,234 SF
 Building 3, Suite 100: 7,800 SF

RATE & TERM

\$19.00 PSF NNN, \$6.94 PSF OPEX
 Minimum 5-year term

LOCATION

Located at the NE corner of
 Weston Road and Southwest 41st

DRIVE TIME



15 miles
 17-minute drive



1 mile
 3-minute drive



17 miles
 19-minute drive



5 miles
 10-minute drive



20 miles
 22-minute drive



5 miles
 10-minute drive

FOR MORE INFORMATION,
 PLEASE CONTACT

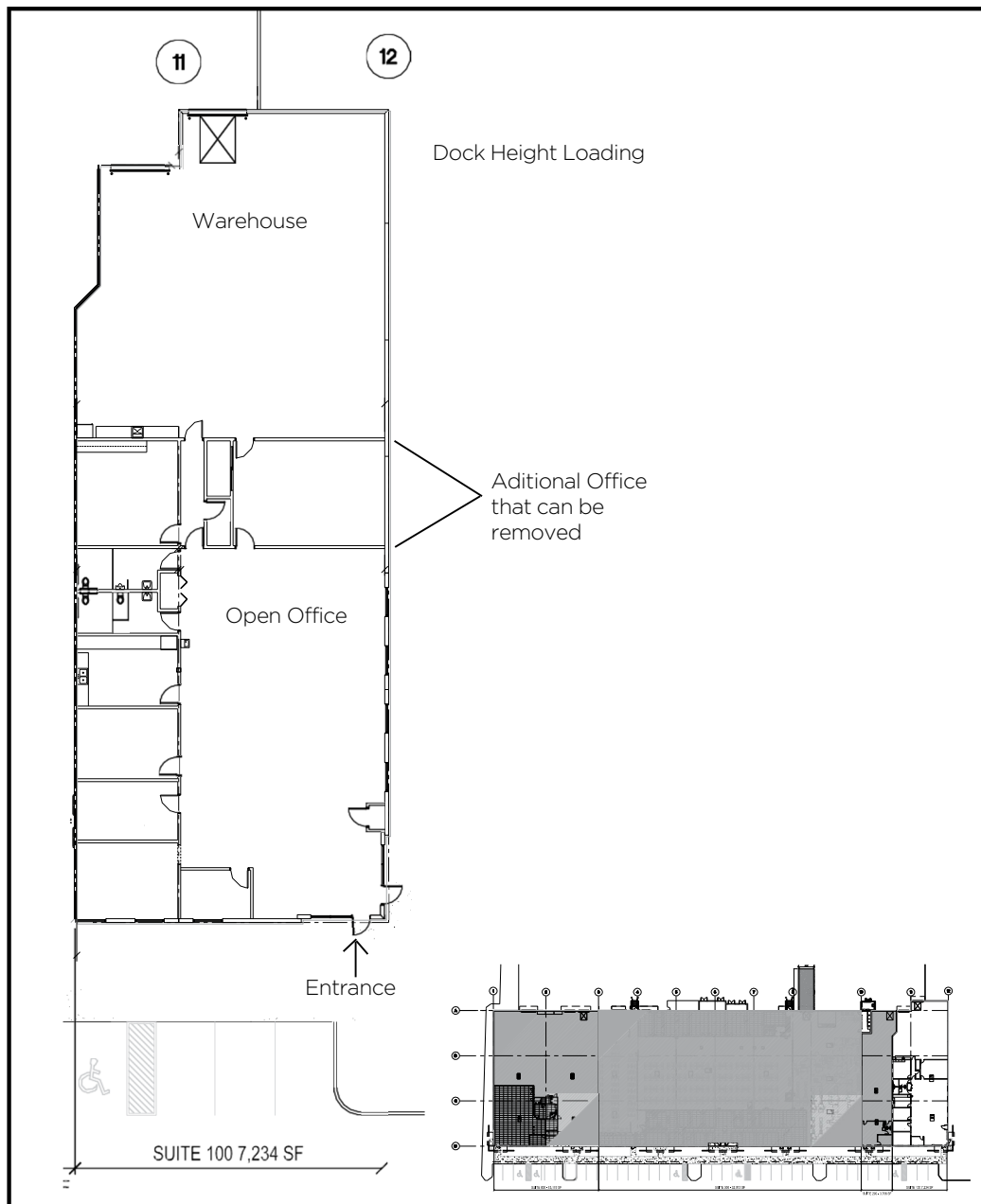
Thomas Viscount

Executive Managing Director
 +1 954 643 6591
tviscount@savills.us

Pointe West I

savills

BLDG. 1 15751 SW 41st Street, Davie, FL



AVAILABILITIES

Building 1, Suite 100: 7,234 SF

RATE & TERM

\$19.00 PSF NNN, \$6.94 PSF OPEX

Minimum 5-year term

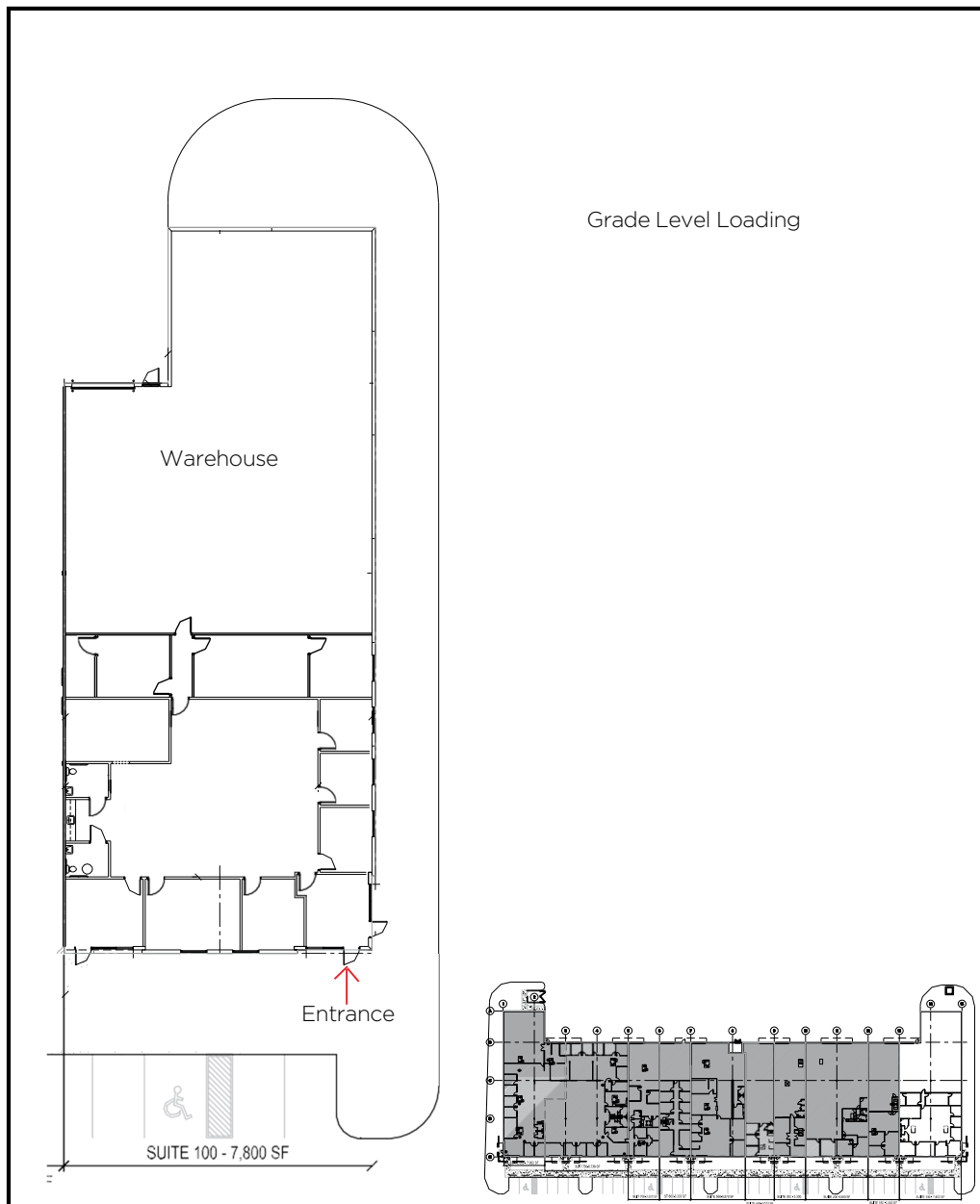
FEATURES

- Endcap with multiple windows
- 24' clear ceiling height
- Dock height loading

Pointe West I

savills

BLDG. 3 15951 SW 41st Street, Davie, FL



AVAILABILITIES

Building 3, Suite 100: 7,800 SF

RATE & TERM

\$19.00 PSF NNN, \$6.94 PSF OPEX

Minimum 5-year term

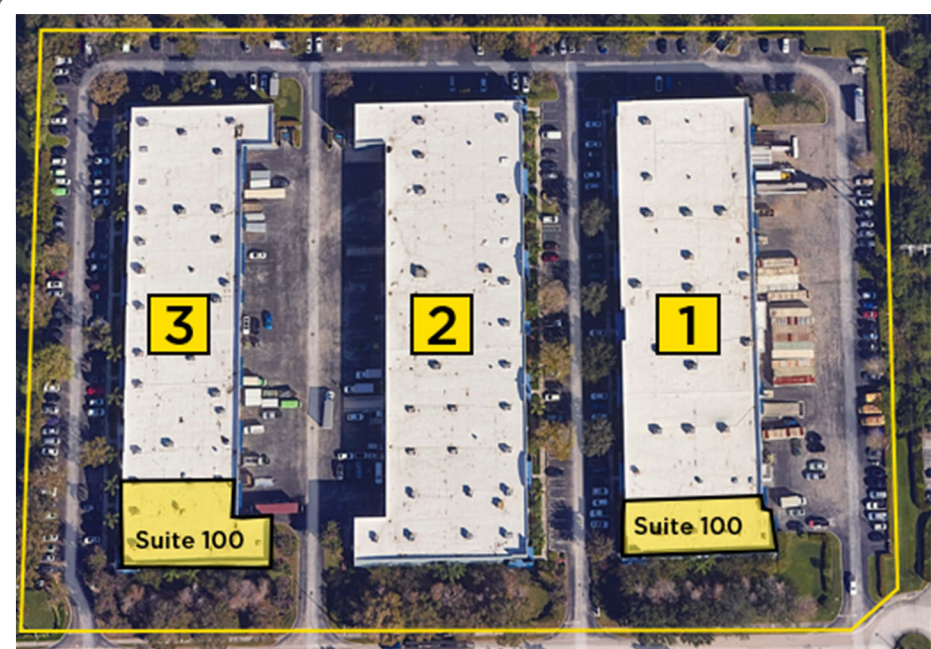
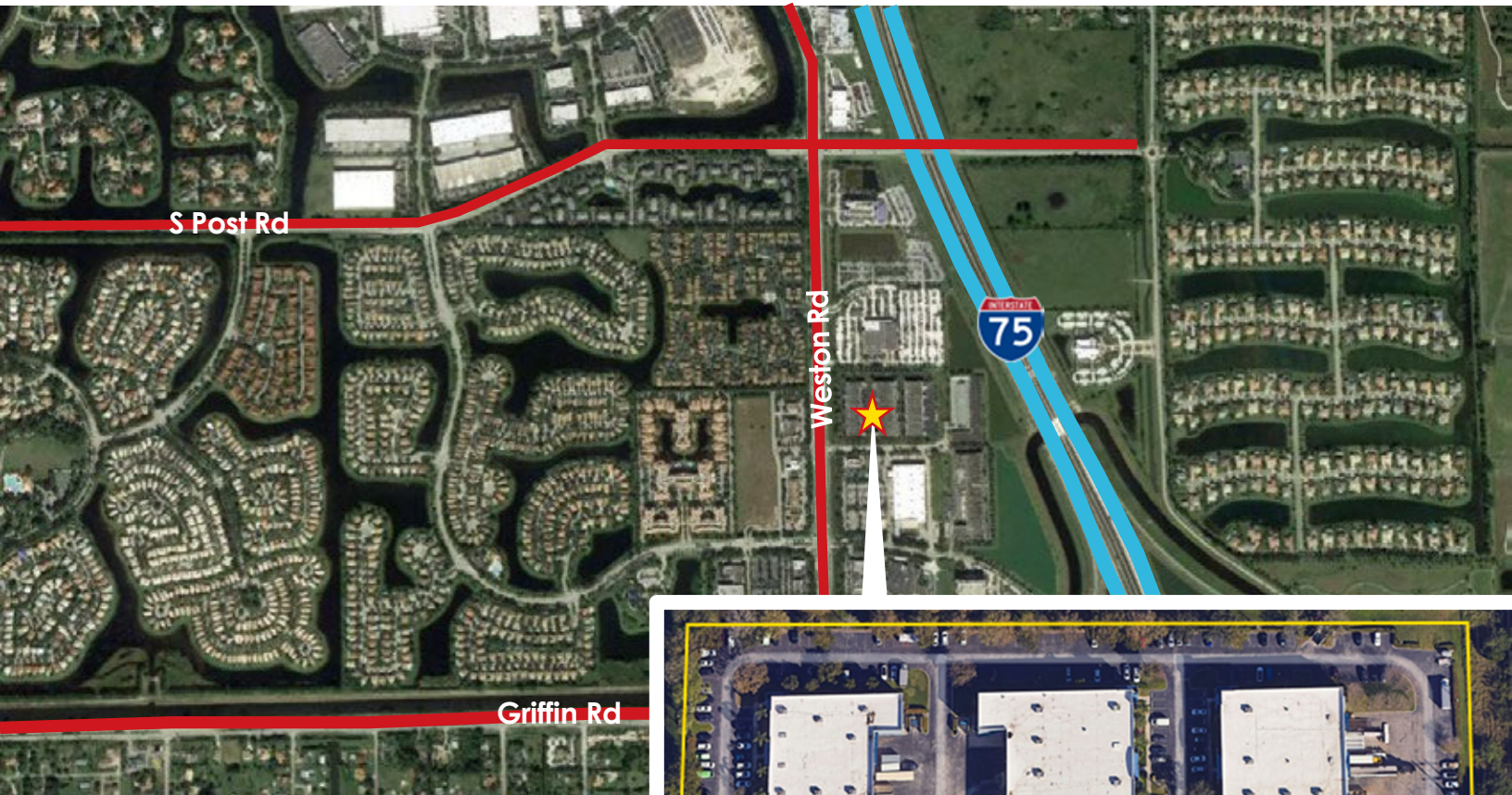
FEATURES

- Endcap with multiple windows
- 24' clear ceiling height
- Grade level loading

Pointe West I

savills

Davie, Florida



Prime Location

- Busy Weston Road Frontage
- 1 Mile to I-75
- 5 Miles to I-595 or SR 27
- 15 Miles to Florida's Turnpike
- 20 Miles to Ft Lauderdale-Hollywood International Airport and Port Everglades

savills

Thomas Viscount

Executive Managing Director
+1 954 643 6591
tviscount@savills.us

© 2026 Savills. All rights reserved. The information contained in this communication has been obtained from a variety of sources believed to be reliable but has not been verified. NO WARRANTY OR REPRESENTATION, EXPRESS OR IMPLIED, IS MADE AS TO THE CONDITION OF THE PROPERTY OR ACCURACY OR COMPLETENESS OF THE INFORMATION CONTAINED HEREIN AND SAME IS SUBMITTED SUBJECT TO ERRORS, OMISSIONS, CHANGE OF PRICE, RENTAL OR OTHER CONDITIONS, WITHDRAWAL WITHOUT NOTICE AND TO ANY SPECIFIC CONDITIONS IMPOSED BY THE PROPERTY OWNER OR LESSOR.