

For lease

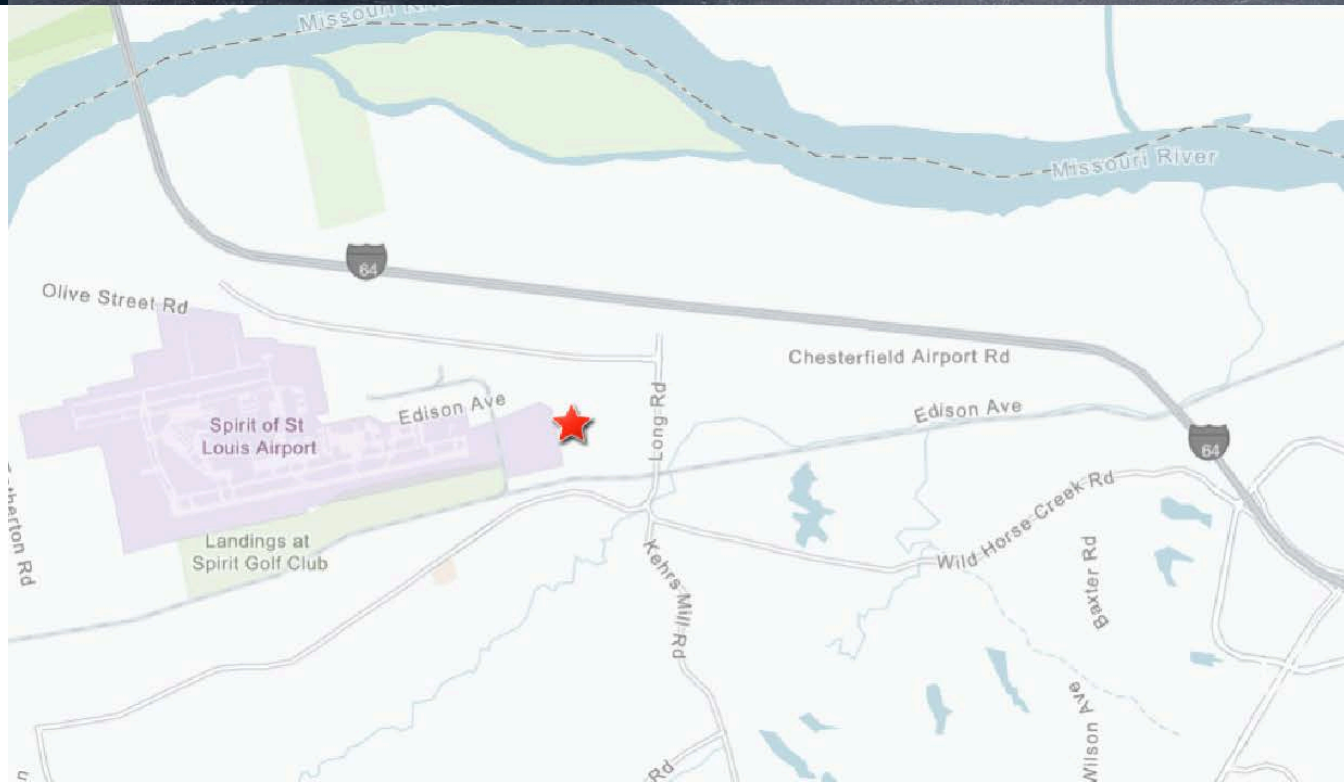
17824-26 Edison Ave
Chesterfield, MO 63005



\pm 5,370 SF Available

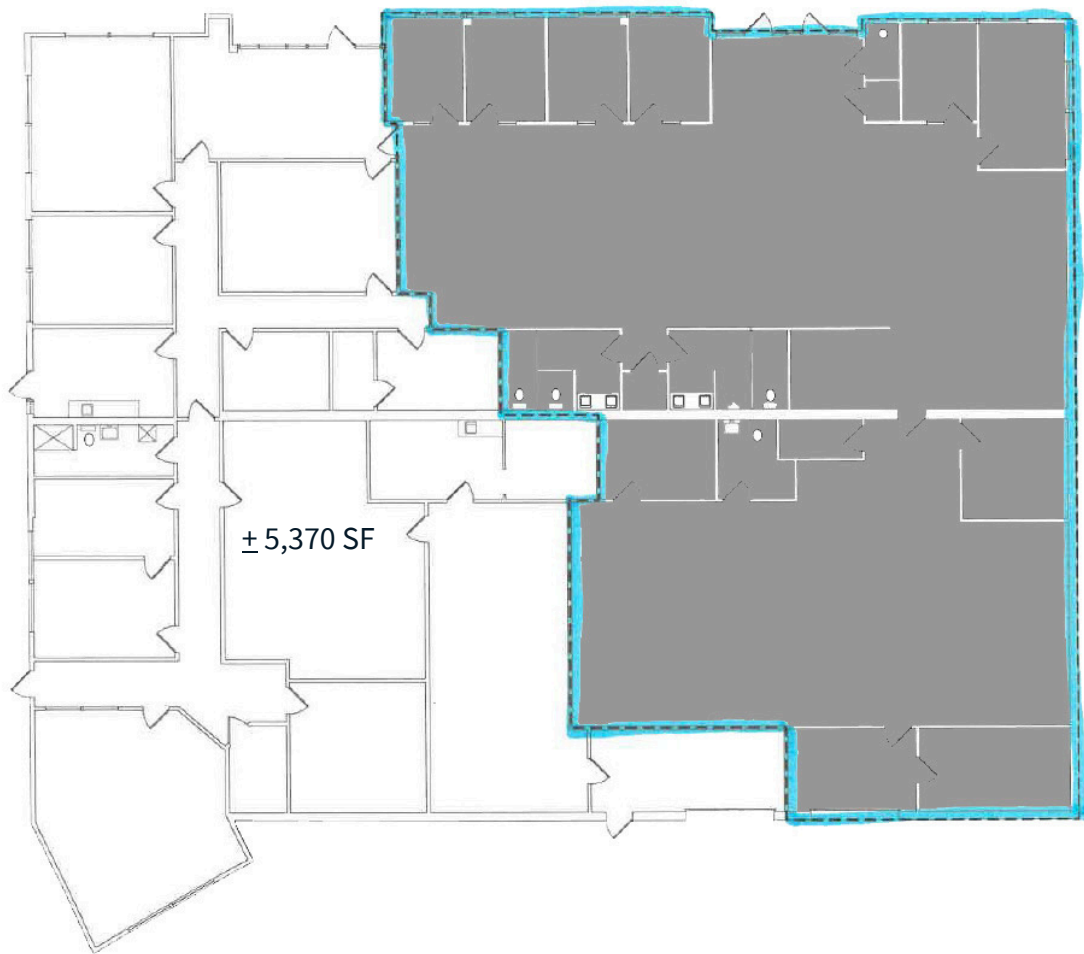
Property Information

- Approximately 70% office, 30% warehouse
- Multiple offices, conference room, kitchen and private outdoor patio
- 17' clear height
- Fully conditioned
- 1 Dock Height Door, potential for an additional door
- Ample parking
- New Roof in 2025
- Furniture can be made available upon request
- Located in Chesterfield Valley
- Lease Rate: \$12.00/SF NNN
(Est. NNN \pm \$6.00/SF)



Floor Plan

± 5,370 SF Available



Dave Biales
Managing Director
david.biales@jll.com
+1 (314) 261 7368

JLL St. Louis
211 North Broadway
Suite 2900
St. Louis, MO 63102

DISCLAIMER

Although information has been obtained from sources deemed reliable, neither Owner nor JLL makes any guarantees, warranties or representations, express or implied, as to the completeness or accuracy as to the information contained herein. Any projections, opinions, assumptions or estimates used are for example only. There may be differences between projected and actual results, and those differences may be material. The Property may be withdrawn without notice. Neither Owner nor JLL accepts any liability for any loss or damage suffered by any party resulting from reliance on this information. If the recipient of this information has signed a confidentiality agreement regarding this matter, this information is subject to the terms of that agreement. ©2025. Jones Lang LaSalle IP, Inc. All rights reserved.