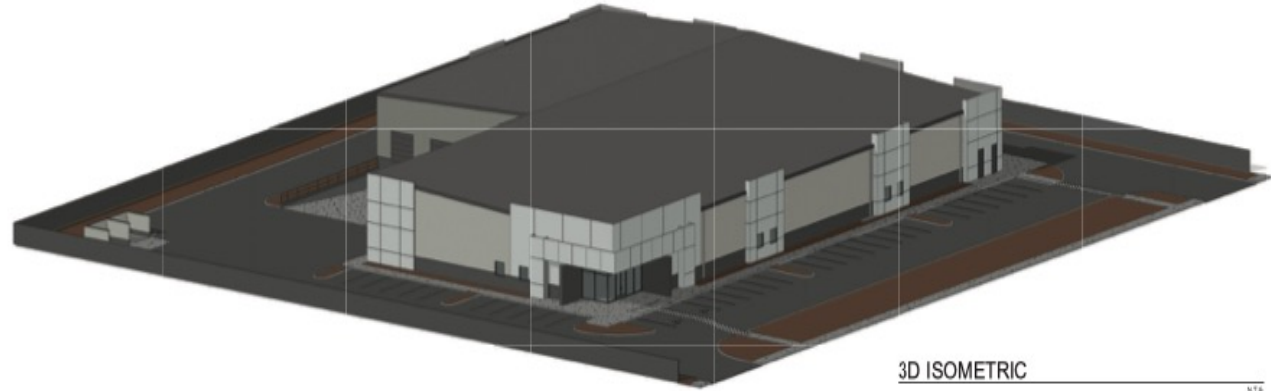


**COMING SOON - AVAILABLE FOR SALE**

**33,395 SQ FT INDUSTRIAL BUILDING**

2315 E. Quail Avenue  
Phoenix, AZ 85024



3D ISOMETRIC

NTA



3D ISO

NTA

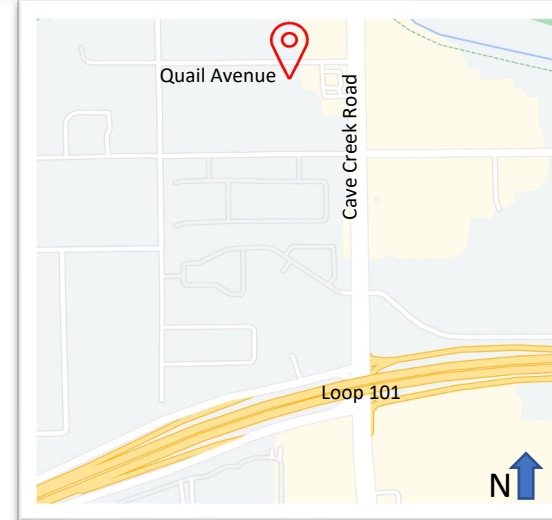
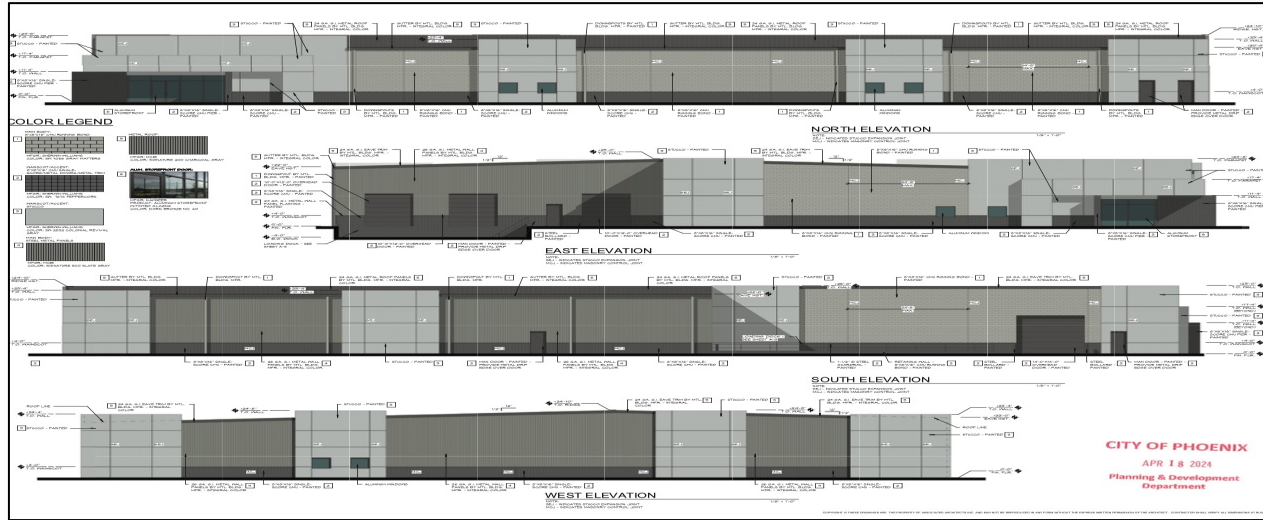
Keith Melidoni  
Office: 480-607-5111  
Email: [kmm@att.net](mailto:kmm@att.net)

**ICOR** PROPERTIES, Inc.  
Industrial Commercial Office Residential

**COMING SOON - AVAILABLE FOR SALE**

2315 E. QUAIL AVENUE  
PHOENIX, AZ 85024

Keith Melidoni  
Office: 480-607-5111  
Email: kmm@att.net



**BUILDING SIZE:** APPROXIMATELY 33,395 SQUARE FEET  
**LAND SIZE:** 2.37 ACRES

- 22' CLEAR HEIGHT
- 800 AMPS OF POWER
- 1 GRADE LEVEL 14X14' ROLL UP DOOR
- 1 GRADE LEVEL 10X12' ROLL UP DOOR
- 2 10X12' TRUCK WELL DOORS
- FULLY INSULATED METAL BUILDING
- FULL DIAMOND ACCESS AT CAVE CREEK AND LOOP 101
- EASY ACCESS SR51 CONNECTION AT LOOP 101
- ELECTRIC – APS
- WATER/SEWER – CITY OF PHOENIX
- ZONING – CP/BP

No warranty or representation is made to the accuracy of the foregoing information. Terms of sale or lease and availability are subject to change or withdrawal without notice.

