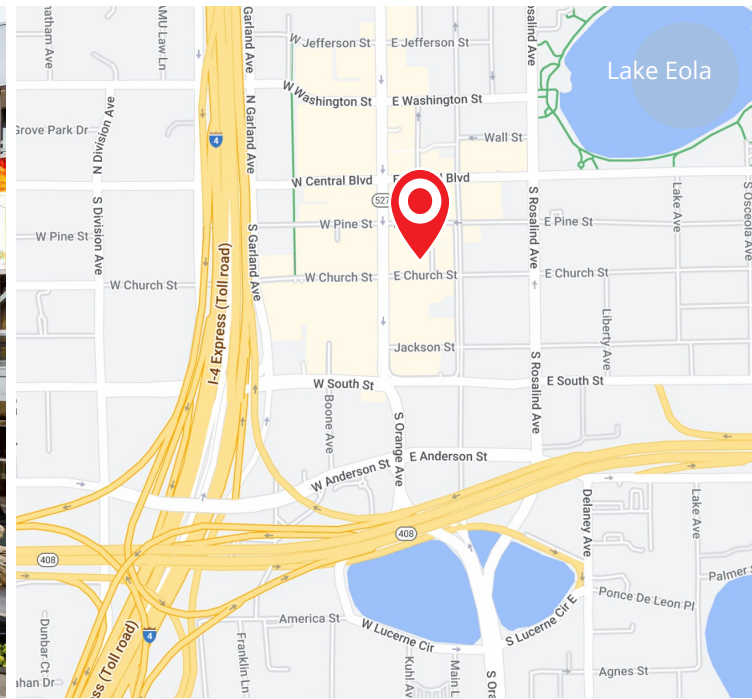


THE PLAZA | GROUND-FLOOR RETAIL

155 S. Orange Avenue, Orlando, FL 32801

SPACE FOR LEASE



PROPERTY HIGHLIGHTS

- » Ground-floor retail space for lease
- » Space available: 1,536 - 3,651 SF
- » 2nd gen. restaurant space available: 2,000 SF | 2,175 SF | 3,924 SF
- » Located on the ground floor of The Plaza towers at the corner of Orange Ave. and Church St.
- » Anchored by a 12-screen CMX Cinemas Café
- » Immediately serves employees of the Plaza office buildings and the residents of Solaire at the Plaza (306 units)
- » Daytime population of more than 51,000 people within a one-mile radius
- » Within walking distance of City Hall, Dr. Phillips Performing Arts Center, Lake Eola, and the SunRail Station

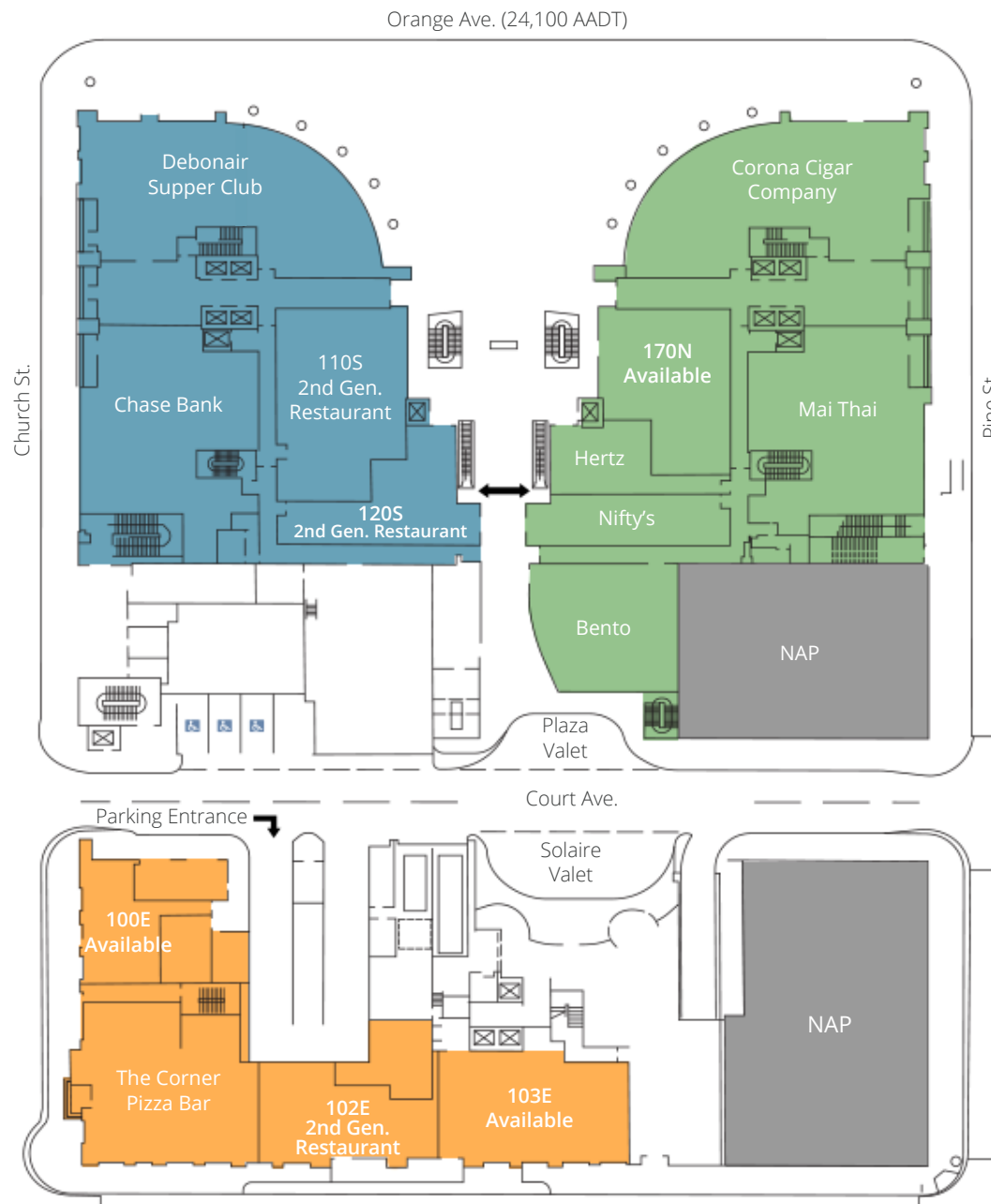
DEMOGRAPHICS

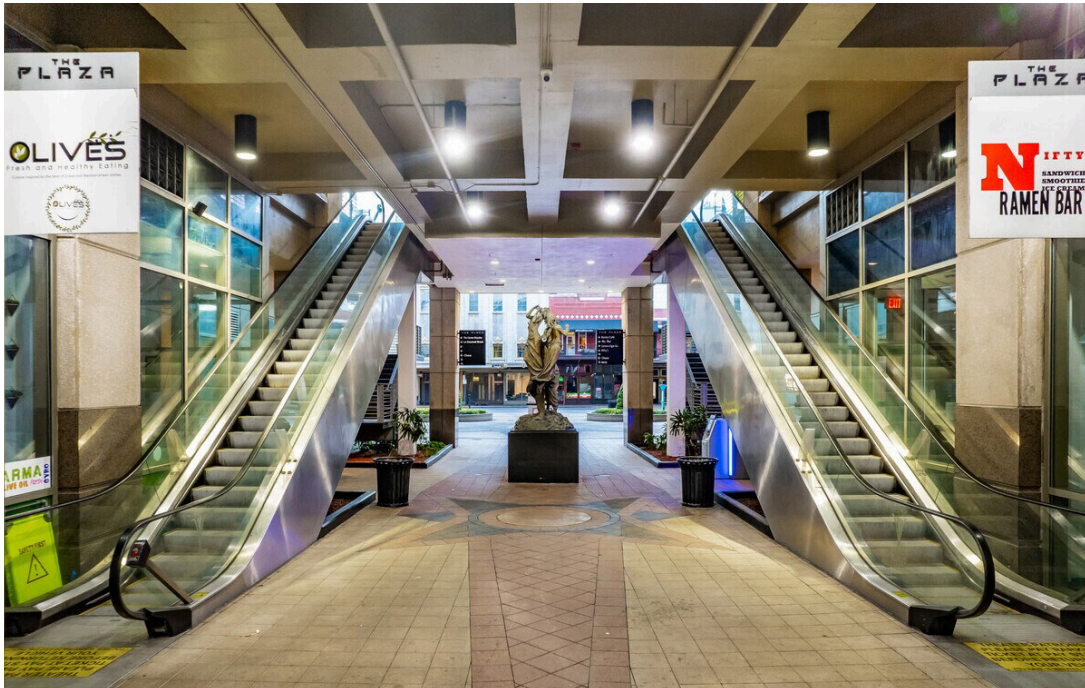
	1 Mile	3 Miles	5 Miles
Population	21,841	107,261	307,670
Households	12,228	50,239	128,904
Daytime Pop.	51,612	135,578	292,634
Ave. HH Income	\$113,337	\$114,638	\$101,441

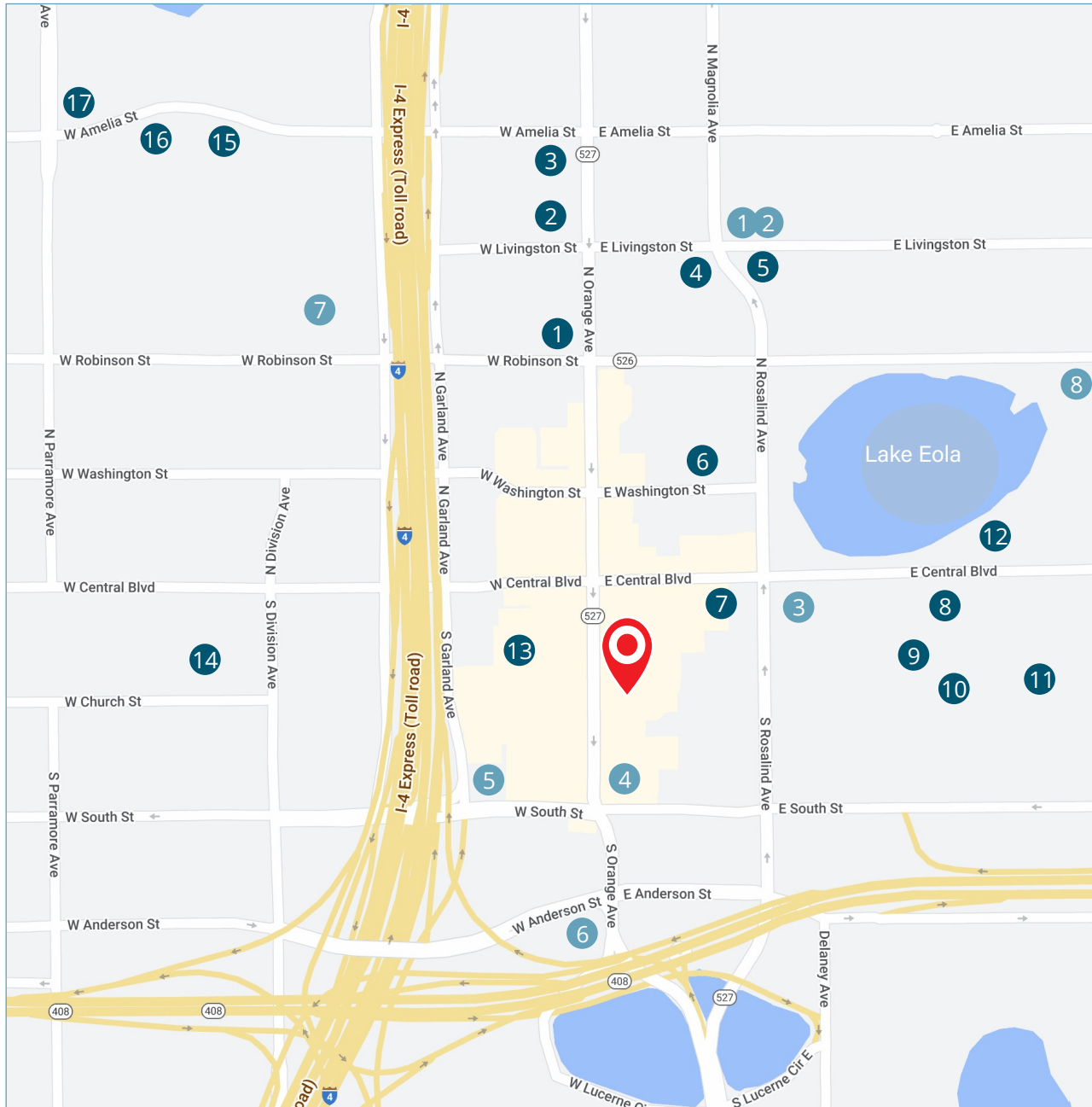
Suite	Tenant	SF
NORTH BUILDING		
100N	Corona Cigar Company	5,374
110N	Mai Thai	4,500
130N	Bento	2,644
150N	Hertz	1,056
170N	Available	2,787
190N	Nifty's	1,460

SOUTH BUILDING		
100S	Debonair Supper Club	6,176
110S	Available - 2nd Gen. Restaurant	3,924
120S	Available - 2nd Gen. Restaurant	2,175
130S	Chase	1,056

EAST BUILDING		
100E	Available	1,536
101E	The Corner Pizza Bar	3,629
102E	Available - 2nd Gen. Restaurant	2,000
103E	Available	3,651







The Plaza

MULTI-FAMILY

- 1 MAA Robinson - 369 units
- 2 Society Orlando - 462
- 3 Central Station - 279 units
- 4 SkyHouse - 320 units
- 5 Radius - 389 units
- 6 Aspire - 164 units
- 7 Mondrian - 350 units
- 8 Paramount - 313 units
- 9 CitiTower - 233 units
- 10 Camden Thornton Park - 299 units
- 11 Camden Lake Eola
- 12 MAA Parkside - 258 units
- 13 55 West - 525 units
- 14 City View - 266 units
- 15 Modera - 292 units
- 16 The Julian - 409 units
- 17 Amelia Court - 256 units

HOSPITALITY

- 1 Hilton Garden Inn
- 2 Home2Suites
- 3 Embassy Suites
- 4 Grand Bohemian
- 5 AC Marriott
- 6 Aloft Orlando Downtown
- 7 Marriott Orlando Downtown
- 8 EO Inn

