

Industrial Flex

2604 ANDALUSIA BLVD, CAPE CORAL, FL 33909

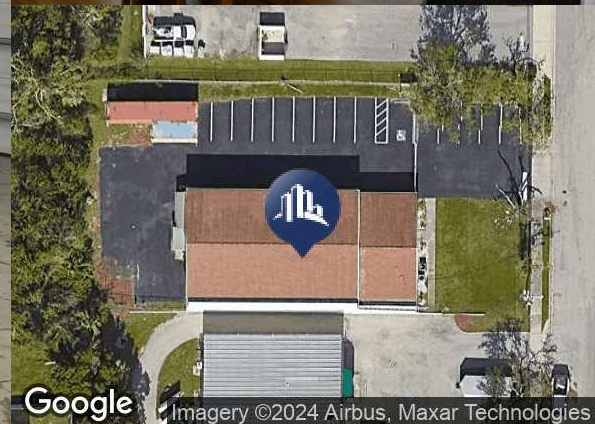
SALE/LEASE

Freestanding
Heavy & Light Uses



CALL TODAY

- Sale Price: \$1,349,000
- Lease Price: \$16.50/SF NNN
- 5,000/SF - .46 Acres
- Freestanding, Fully Fenced with Yard
- Office - 1,250/SF - 4 offices - reception area/showroom - 3 rest rooms and shower.
- Warehouse - 3,750/sf w/Overhead Door 14 x 12 - Grade Level
- 200 Amperes @ 240 volts - 3 phase
- New paint, sealcoat and striping in 2024
- Industrial Zoning
- Call for details



Theresa Blanch-Mitchell, CCIM
1922 VICTORIA AVE STE C FT MYERS, FL 33901
239.265.2628
theresa@ccim.net
FL #BK3202944

Each office independently owned and operated.

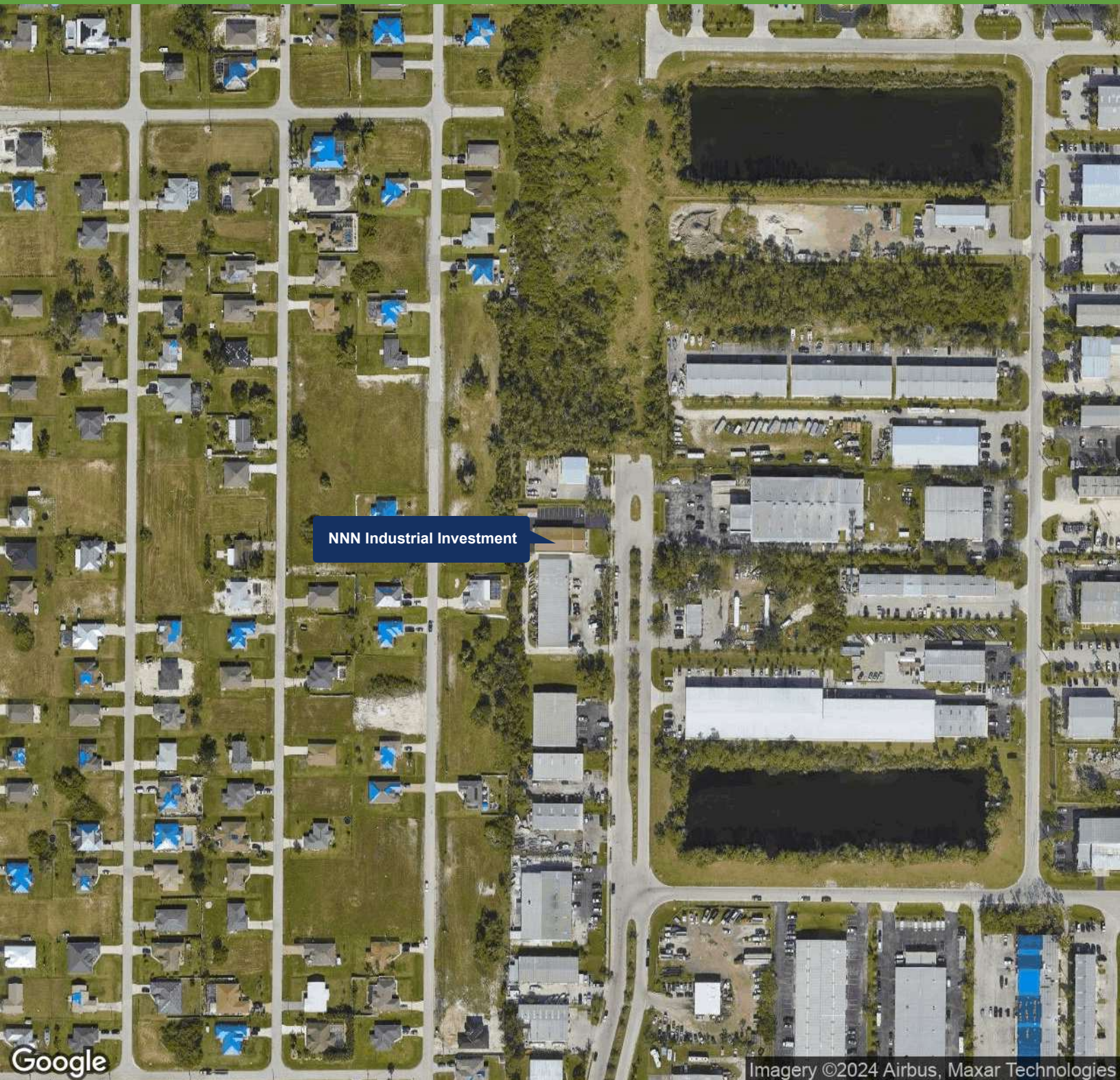
We obtained the information above from sources we believe to be reliable. However, we have not verified its accuracy and make no guarantee, warranty or representation about it. It is submitted subject to the possibility of errors, omissions, change of price, rental or other conditions, prior sale, lease or financing, or withdrawal without notice. We include projections, opinions, assumptions or estimates for example only, and they may not represent current or future performance of the property. You and your tax and legal advisors should conduct your own investigation of the property and transaction.

NNN Industrial Investment

2604 ANDALUSIA BLVD, CAPE CORAL, FL 33909

FOR SALE

Industrial Property



NNN Industrial Investment

Imagery ©2024 Airbus, Maxar Technologies



Theresa Blanch-Mitchell, CCIM
1922 VICTORIA AVE STE C FT MYERS, FL 33901
239.265.2628
theresa@ccim.net
FL #BK3202944

Each office independently owned and operated.

We obtained the information above from sources we believe to be reliable. However, we have not verified its accuracy and make no guarantee, warranty or representation about it. It is submitted subject to the possibility of errors, omissions, change of price, rental or other conditions, prior sale, lease or financing, or withdrawal without notice. We include projections, opinions, assumptions or estimates for example only, and they may not represent current or future performance of the property. You and your tax and legal advisors should conduct your own investigation of the property and transaction.

www.SperryCGA.com