

AXIS 360

COMMERCIAL REAL ESTATE

3001½ Gill St.
Suite A
Bloomington, Illinois

www.axis360.co



FOR LEASE - Class A Office Space in Normal, Illinois

ADDRESS

321 Susan, Suite D
Normal, Illinois

AVAILABLE SPACE

2,800 sq. ft.

LEASE RATE

\$16.00/sq. ft.

LEASE TYPE

Full Gross

UTILITIES

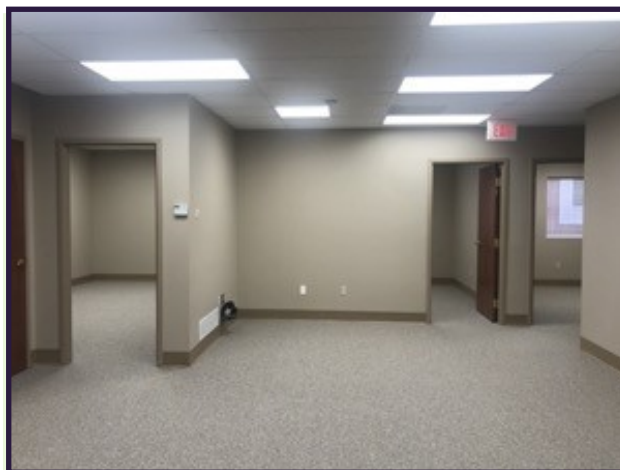
Paid by Landlord

ZONING

B-1

AVAILABILITY

Immediate



Main Floor has 1,808 sq. ft. and has four large offices, reception area, conference room, and restrooms

Second floor offers 992 sq. ft. of open work area.



Tom Restivo
Commercial Real Estate Broker
trestivo@axis360.co
(309) 310-4238

Laura Pritts
Managing Broker
lpitts@axis360.co
(309) 824-0507

Visit our Website:
www.axis360.co



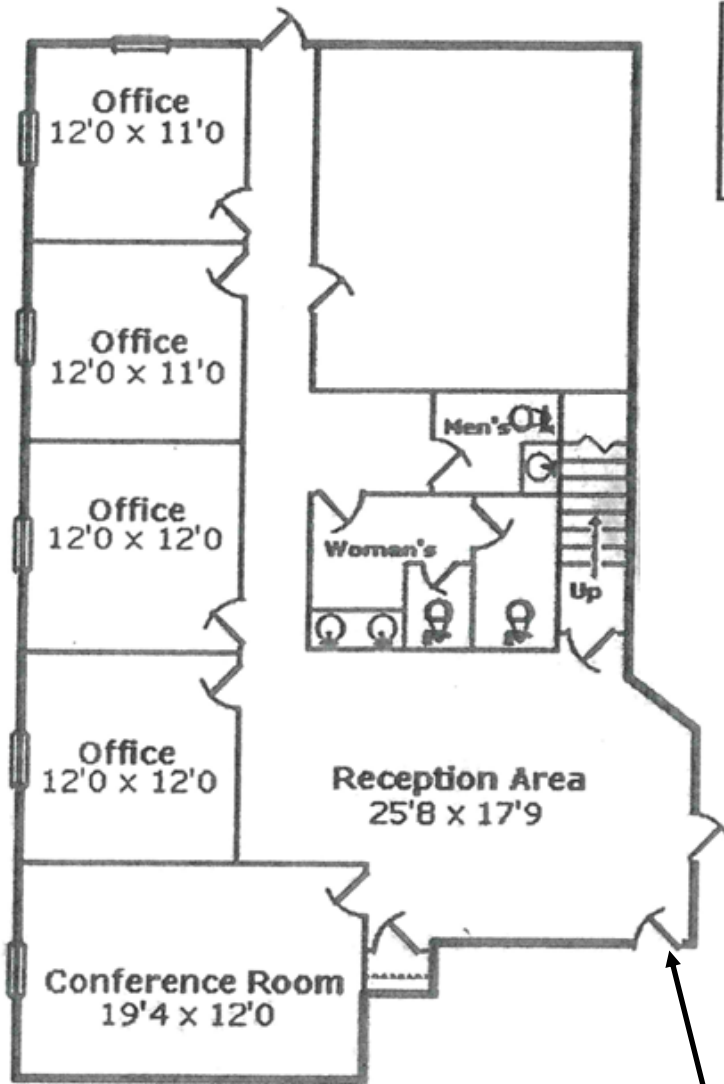


3001½ Gill St.
Suite A
Bloomington, Illinois
www.axis360.co

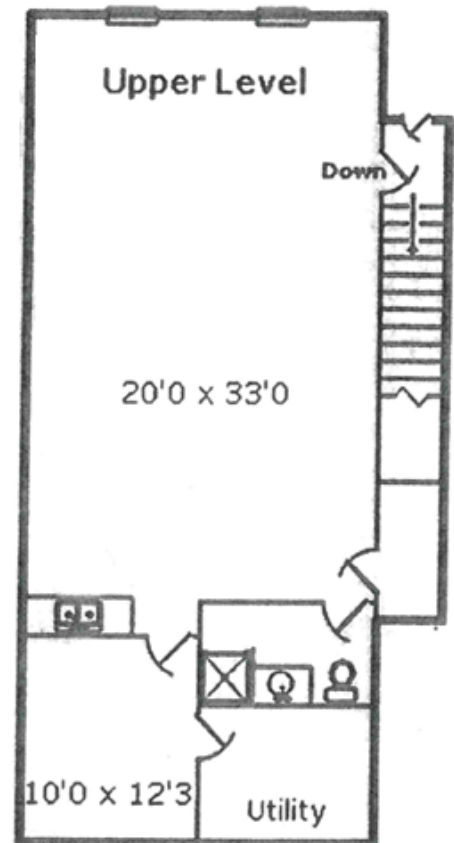
Visit our Website:



321 Susan Drive, Suite D, Normal, IL



| Area Sizes | |
|-------------|--------------|
| Main Floor | 1800 Sq. Ft. |
| Upper Level | 1080 Sq. Ft. |
| Total | 2880 Sq. Ft. |



All information is believed to be accurate but is not guaranteed and is for illustration uses only.

Tom Restivo, Commercial Real Estate Broker
Laura Pritts, Commercial Managing Broker

trestivo@axis360.co
lpitts@axis360.co

(309) 310-4238
(309) 824-0507

AXIS 360

COMMERCIAL REAL ESTATE

3001½ Gill St.
Suite A
Bloomington, Illinois

www.axis360.co

Visit our Website:



Tom Restivo, Commercial Real Estate Broker
Laura Pritts, Commercial Managing Broker

trestivo@axis360.co
lpitts@axis360.co

(309) 310-4238
(309) 824-0507