

FLEXIBLE R&D, RETAIL & CREATIVE WORKSPACES FOR LEASE

# EAST VILLAGE ART BLOCK

1249 F STREET, 705-727 PARK BOULEVARD,  
700-740 13TH STREET | SAN DIEGO, CA



CAST CAPITAL PARTNERS

# PROPERTY HIGHLIGHTS

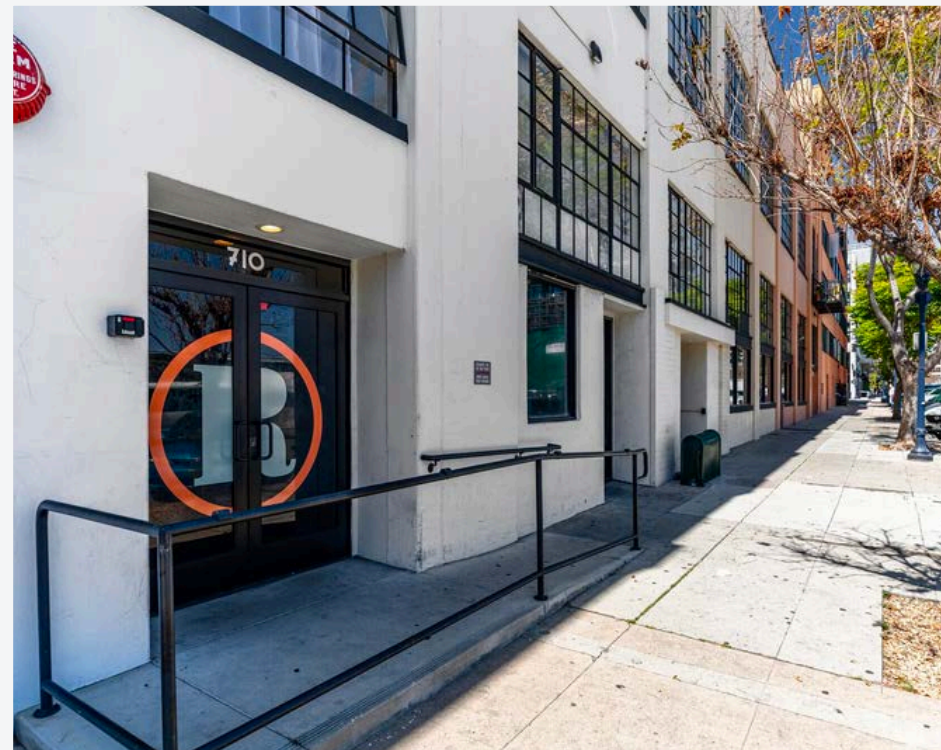
The Ratner is a revitalized historic creative office building in San Diego's East Village, ideally located in the heart of the I.D.E.A. District. Formerly known as The Art Center, the building has been thoughtfully renovated and rebranded, blending legacy with modern design.

Named for the Ratner family—who operated a successful men's clothing business here from the 1920s to 1989—the building now draws digital media agencies, production companies, and tech firms seeking a stylish, L.A.-inspired urban vibe.

Expansive windows and lofty ceilings fill the space with natural light, creating an ideal setting for creatives and makers. With industrial-chic finishes, unique amenities, and a strong sense of community, The Ratner supports collaboration across industries like architecture, marketing, film, and visual arts.

The building offers 144,000 SF of commercial space with suites up to 10,000 SF, making it a flexible home for companies looking to amplify creativity and embrace the East Village's live-work-play lifestyle.

- Historic 1925 construction with preserved industrial-hip character
- Full city block presence in the heart of the I.D.E.A. District
- Directly across from East Village Green, a 4-acre urban park coming soon
- Up to 56,524 SF of contiguous space with clear heights up to 20 ft
- Original hardwood floors, exposed ceilings, and operable windows
- Oversized freight elevator for large-format equipment or furnishings
- Google WebPass ultra-high-speed internet available
- Easy freeway access via I-5, 163, and 94
- Walkable to Petco Park, Gaslamp, Convention Center & more
- One block to IDEA1, Park & Market Trolley, and Urban Discovery Academy
- Shared on-site conference room with high-speed connectivity

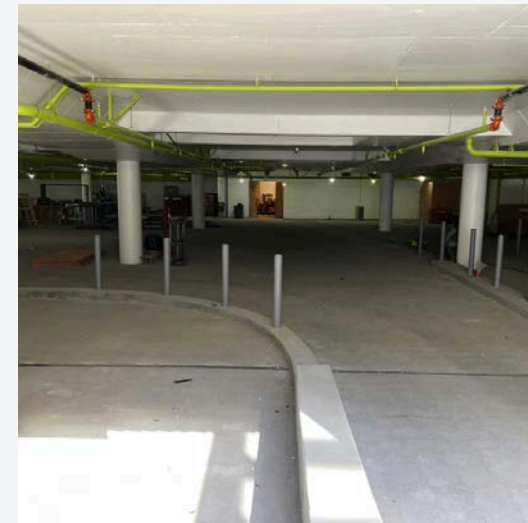


# EAST VILLAGE GREEN

East Village Green, located directly across the street, spans a full 60,000 SF city block bordered by 13th, F, 14th, and G Streets, with two additional parcels: a 20,000 SF site at the northeast corner of 14th and G, and a 10,000 SF site along F Street between 14th and 15th. The latter will serve as the new home for two relocated historic buildings, thoughtfully integrated into the park's design.

## Located directly across the street, the East Village Green will include:

- Two-level, 185-space underground public parking garage
- Expansive central lawn
- Two-story, 14,200 SF community center
- Off-leash dog parks for small and large breeds
- Enhanced streetscape improvements
- Pedestrian-friendly upgrades to 14th Street for community events
- Signature public art installations
- Interactive children's playground with water feature
- Game and reading terrace
- Public restrooms with staffed attendant booth
- Relocation of two designated historic homes to the park's edge



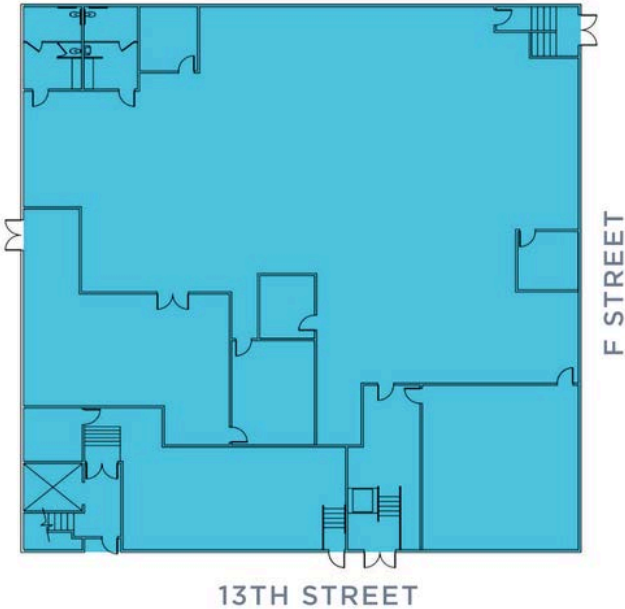
# FLOOR PLAN 1ST FLOOR

## PRICE UPON REQUEST

SUITE 100      SIZE 9,934 RSF

### COMMENTS

The suite boasts HVAC throughout, ensuring a comfortable environment in the expansive open area, storage, and IT spaces. Its direct street access grants convenient accessibility to the premises. Additionally, there's a loading area dedicated to accommodating oversized items, streamlining the handling of large shipments. Occupants will also benefit from the convenience of private restrooms, exclusively available for their use.

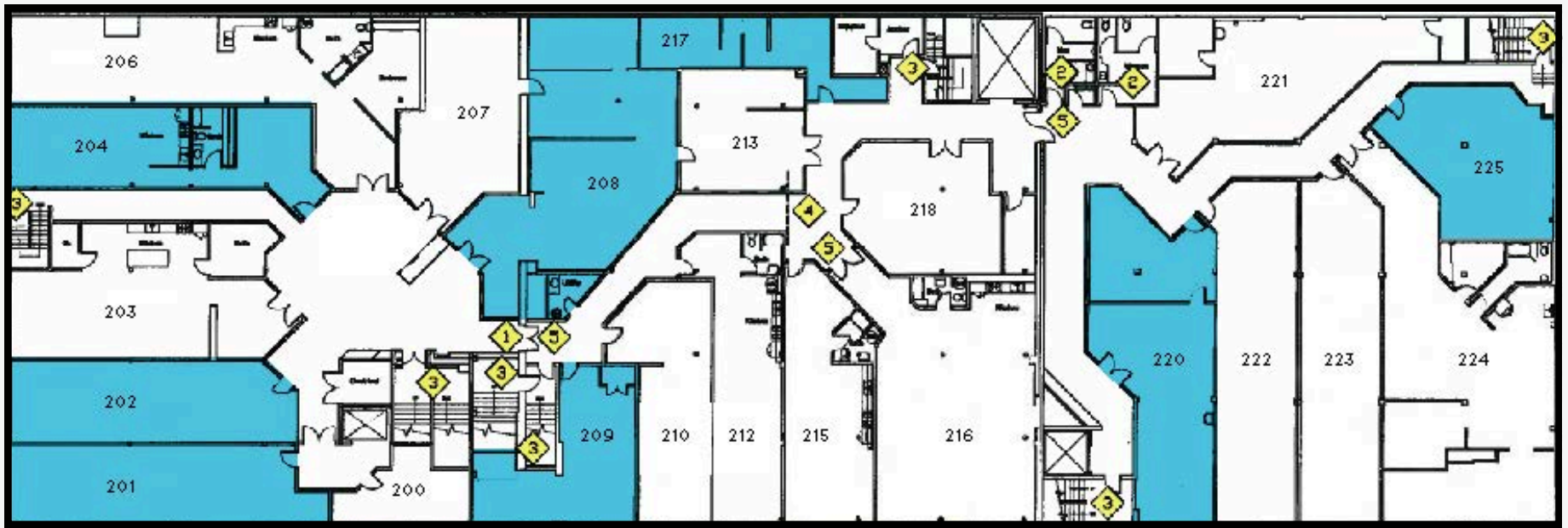




# FLOOR PLAN 2ND FLOOR

**\$1.30-\$1.85/SF/Mo. + ELEC**

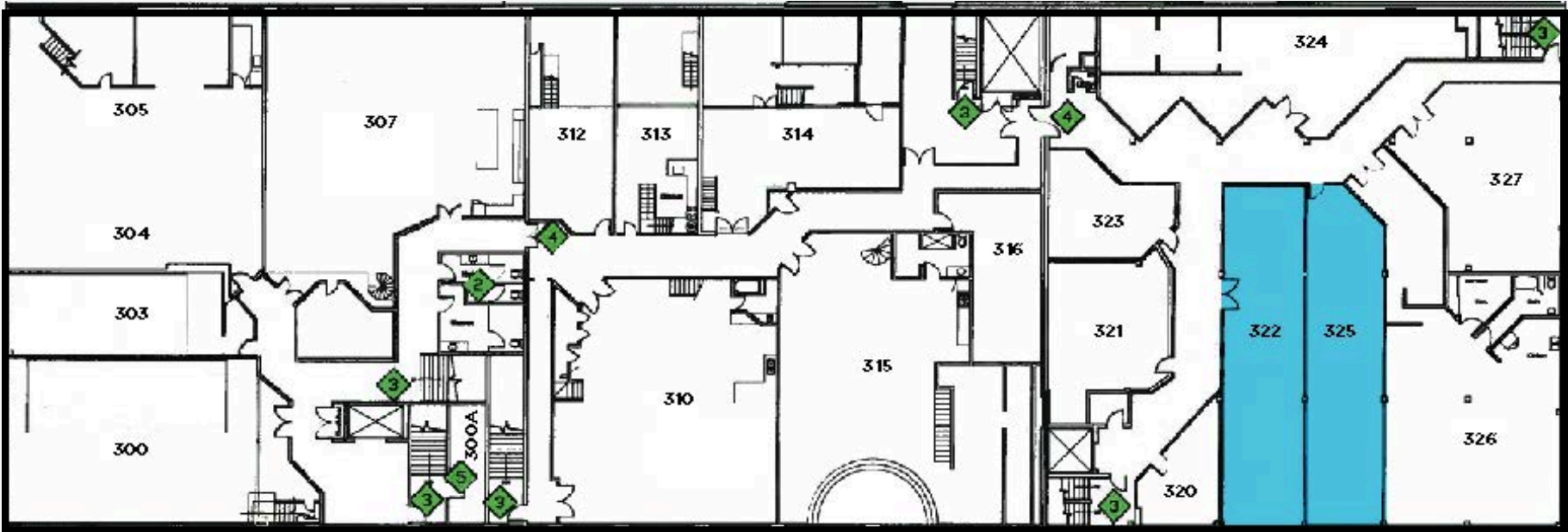
SUITE	SIZE	COMMENTS
201/202	1,831 SF	Exterior suite with an open plan, one private office, a sink, and windows overlooking 13th and G St (Available 6/1/2027)
204	1,004 SF	Exterior suite with windows facing G St, an open floor plan, and a private restroom
208	1,554 RSF	Interior suite with HVAC, flexible floor plan, storage, and reception
209	715 SF	Exterior suite with an open plan and windows overlooking 13th St (Available 10/1/2026)
217	906 RSF	Interior suite with sink, ventilation, and an open floor plan ideal for storage
220	1,299 RSF	Operable large windows overlooking 13th Street and Village Green Park
225	815 SF	Exterior suite with an open plan and windows overlooking F Street



# FLOOR PLAN 3RD FLOOR

\$1.30-\$1.85/SF/Mo. + ELEC

SUITE	SIZE	COMMENTS
322	1,257 RSF	Exterior Suite, flexible floor plan, natural light overlooking 13th Street
325	1,234 RSF	Exterior Suite, flexible floor plan, natural light overlooking 13th Street

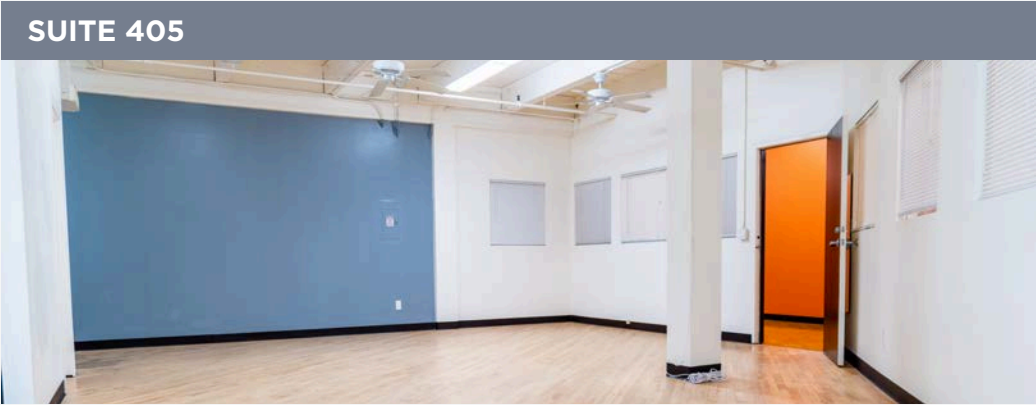
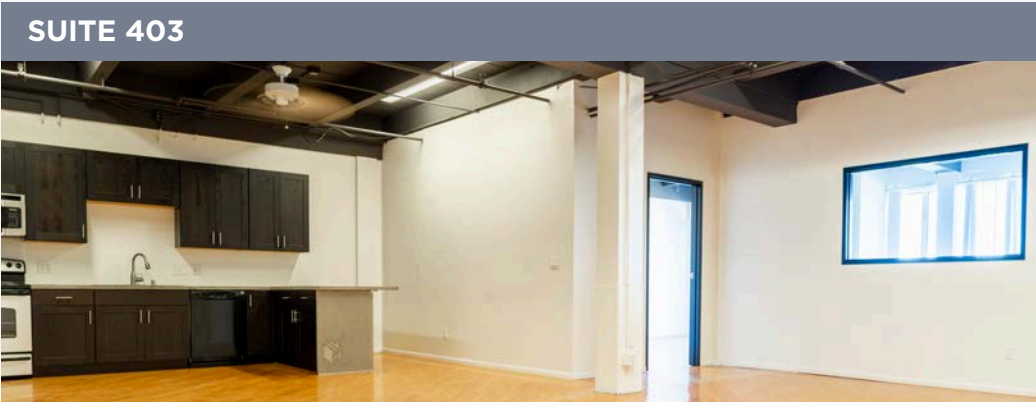
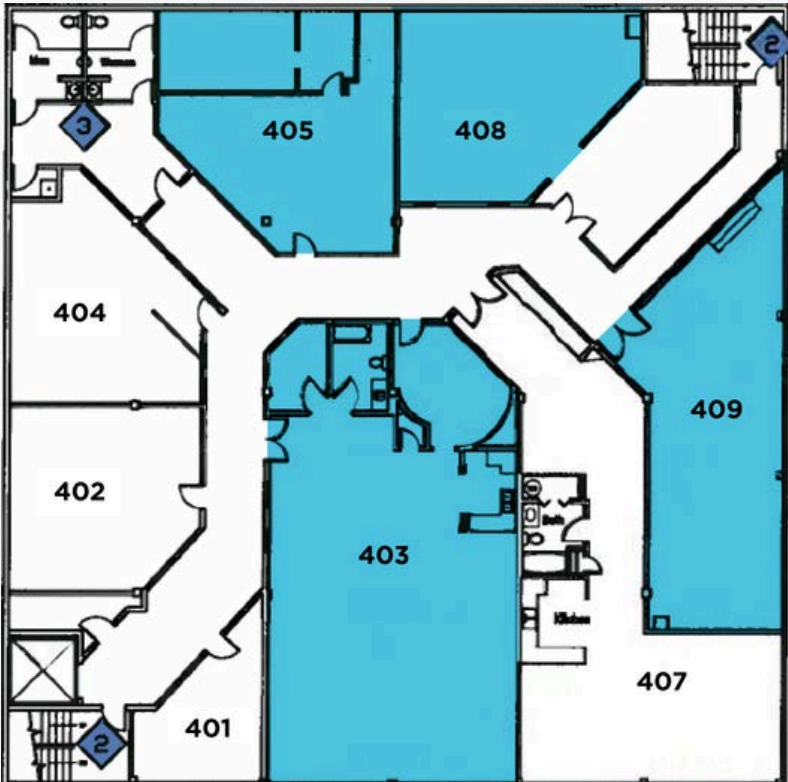


# FLOOR PLAN 4TH FLOOR

**\$1.30-\$1.85/SF/Mo. + ELEC**

SUITE	SIZE	COMMENTS
403	1,822 RSF	Exterior Suite with flexible floor plan, kitchen, bathroom, and storage
405	775 RSF	Interior suite with open floor plan
408	1,055 RSF	Interior Suite with flexible floor plan and storage
409	986 RSF	Exterior Suite with flexible floor plan and an extensive window line

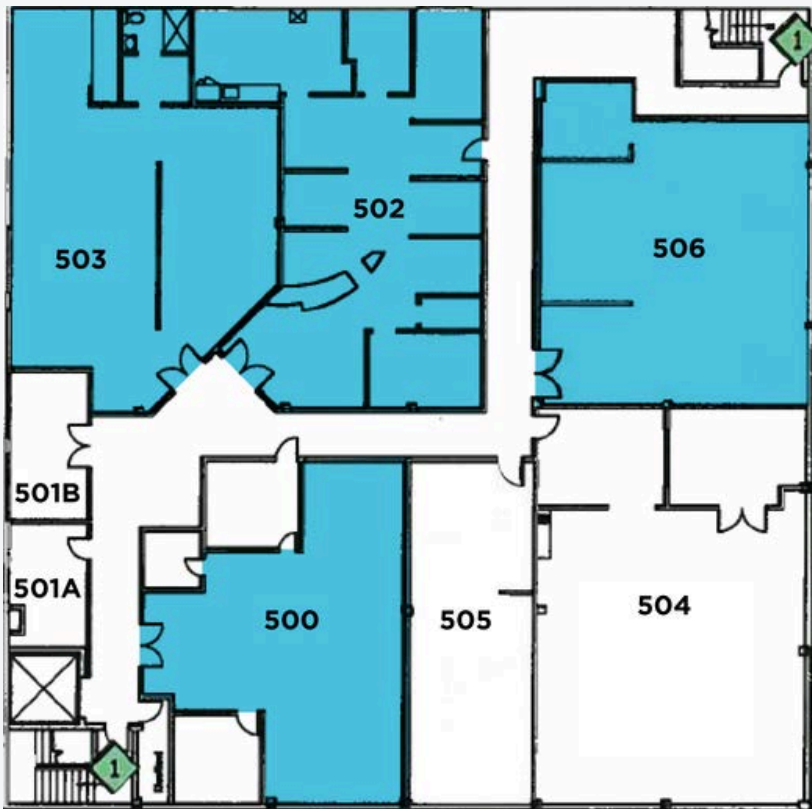
\*ALL AVAILABLE NOW, PLEASE REACH OUT FOR SUITE 403



# FLOOR PLAN 5TH FLOOR

**\$1.70-\$1.85/SF/Mo. + Utilities**

SUITE	SIZE	COMMENTS
500	1,324 RSF	Exterior suite with high ceilings and windows overlooking 13th St
502	1,492 RSF	Exterior suite, abundant natural light, 3 private offices, kitchen, and storage
503	1,428 RSF	Exterior suite with high ceilings and windows overlooking G St
506	1,227 RSF	Exterior suite with high ceilings and windows overlooking F St

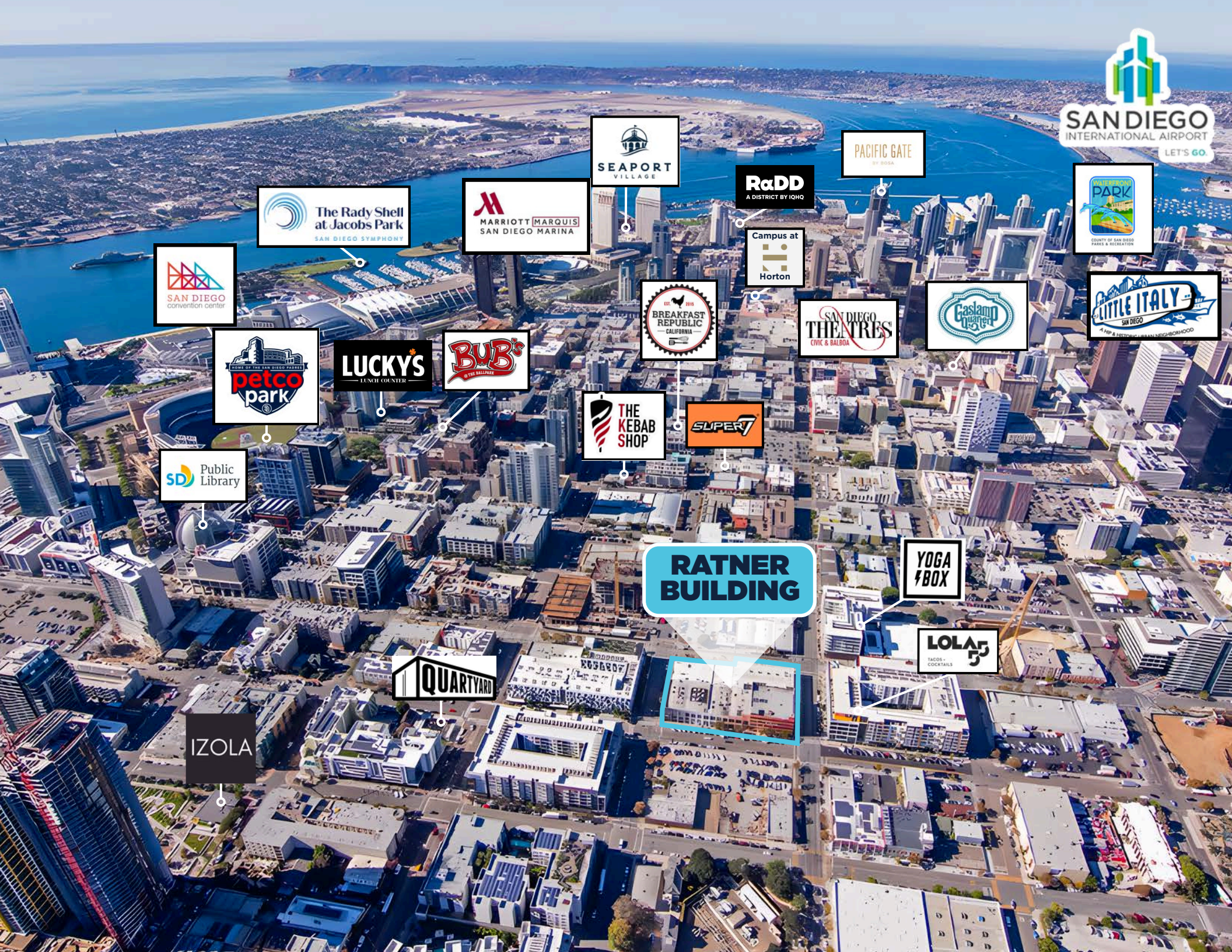


**SUITE 500**



**SUITE 506**





SEAPORT  
VILLAGE

PACIFIC GATE  
BY ROSA

The Rady Shell  
at Jacobs Park  
SAN DIEGO SYMPHONY

MARRIOTT MARQUIS  
SAN DIEGO MARINA

RaDD  
A DISTRICT BY IQHQ

WATERFRONT  
PARK  
COUNTY OF SAN DIEGO  
PARKS & RECREATION

SAN DIEGO  
CONVENTION CENTER

Campus at  
Horton

BREAKFAST  
REPUBLIC  
CALIFORNIA

SAN DIEGO  
THEATRES  
CIVIC & BALBOA

Gaslamp  
Quarter

LITTLE ITALY  
SAN DIEGO  
A HIP & HISTORIC NEIGHBORHOOD

HOME OF THE SAN DIEGO PADRES  
petco  
park

LUCKY'S  
LUNCH COUNTER

BUB'S  
OF THE BALLPARK

THE  
KEBAB  
SHOP

SUPER 7

SD Public  
Library

RATNER  
BUILDING

YOGA  
BOX

LOLA'S  
TACOS + COCKTAILS

QUARTYARD

IZOLA

## EAST VILLAGE ART BLOCK

1249 F STREET  
705-727 PARK BLVD  
700-740 13TH ST

### BRET MORRISS Managing Partner

619.308.6787  
Bret.Morriss@Cast-Cap.com  
CA Lic. 02037074

### RYAN KING

Partner  
619.567.2677  
Ryan.King@Cast-Cap.com  
CA Lic. 02199169

### JOSH SIMMS

Director  
619.500.7473  
Josh.Simms@Cast-Cap.com  
CA Lic. 02037074

### CARRIE DUDA

Senior Associate  
619.489.5373  
Carrie.Duda@Cast-Cap.com  
CA Lic. 02199169

# CAST

CAPITAL PARTNERS

5090 Shoreham Place Suite 100  
San Diego, CA 92122

619.308.6680  
www.cast-cap.com

# REDEFINING SUCCESS IN COMMERCIAL REAL ESTATE



Copyright ©2025 CAST Capital Partners All rights reserved. This information above was obtained from sources deemed reliable. No warranties or representations, expressed or implied, are made as to the accuracy of the information contained herein, and same is submitted subject errors, omissions, change of price, rental or other conditions, withdrawal without notice, and to any special listing conditions imposed by our principals. This information is given with the understanding that all negotiations relating to the purchase, renting or leasing of the property described herein shall be conducted through CAST Capital Partners.