



**For Lease** | Light Industrial Space

# Altamont Business Centre



## Contact Brokers

### **Michael Carrigg, SIOR**

Executive Managing Director  
CA License No. 01298928  
[michael.carrigg@colliers.com](mailto:michael.carrigg@colliers.com)  
+1 925 227 6220

### **Michael Donnelly, SIOR**

Senior Vice President  
CA License No. 01402626  
[michael.donnelly@colliers.com](mailto:michael.donnelly@colliers.com)  
+1 925 227 6241



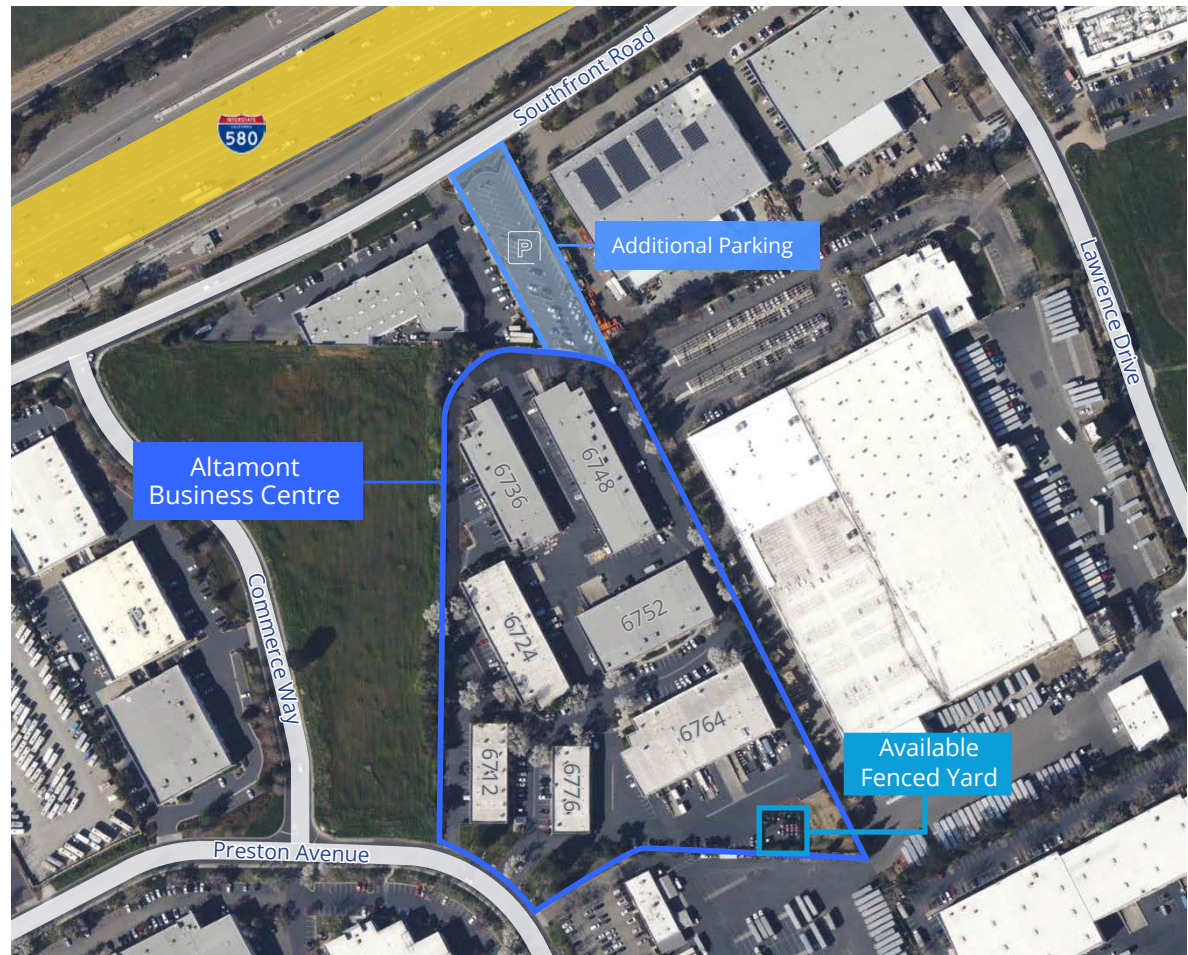
# Features

- A seven-building ±151,139 SF light industrial campus off of Vasco Road
- Easy access to I-580
- Close to retail amenities
- Dock and grade level loading
- Tenant improvement dollars available
- Estimated operating expenses: \$0.366
- Flexible lease terms

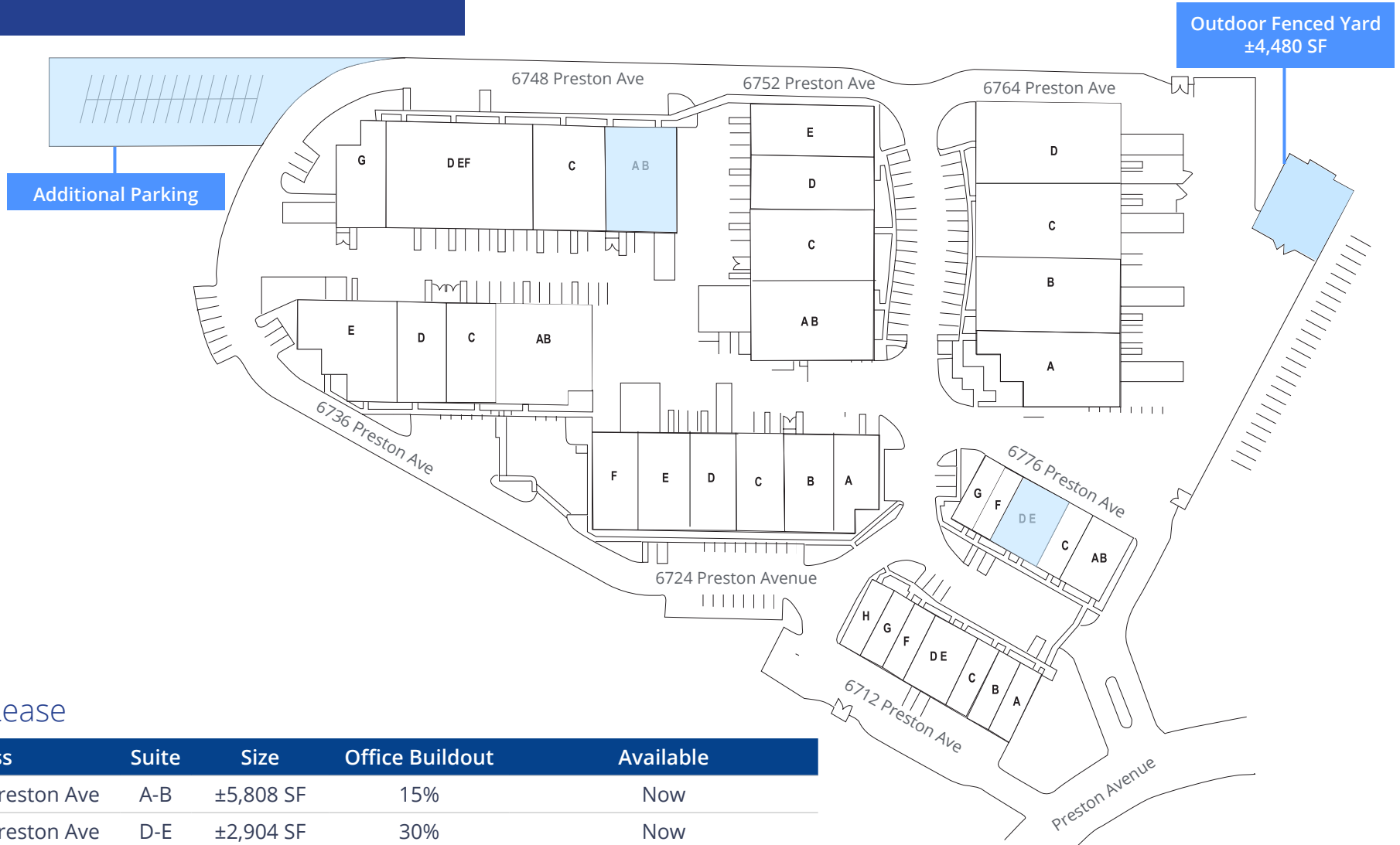


## Additional Parking

*\*Ancillary paved parking lot with additional car and truck parking available for rent*



# Availabilities



## For Lease

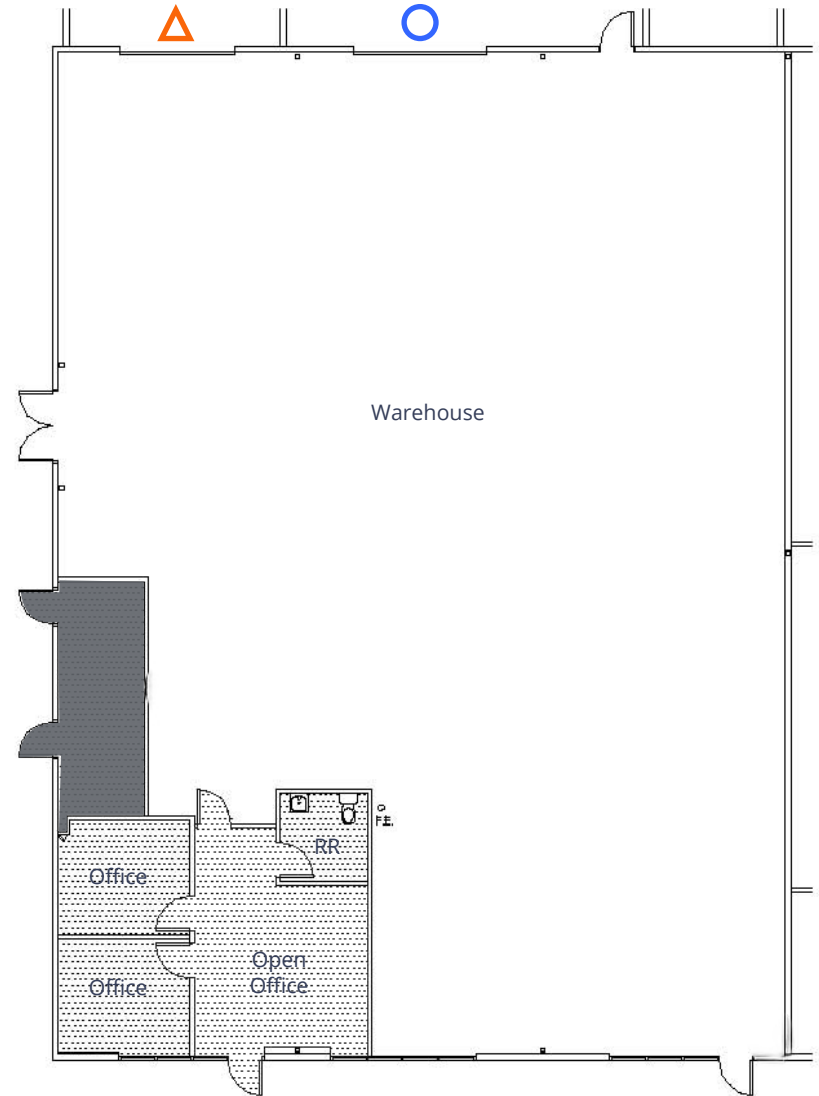
Address	Suite	Size	Office Buildout	Available
6748 Preston Ave	A-B	±5,808 SF	15%	Now
6776 Preston Ave	D-E	±2,904 SF	30%	Now
Fenced Yard		±4,480 SF		Now

# Floor Plan

6748 Preston Avenue

Suite A-B

• ±5,808 SF



 Grade Level Door

 Loading Dock

Altamont Business Centre | Livermore, CA

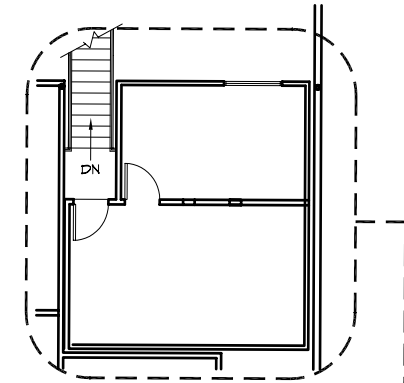
# Floor Plan

6776 Preston Avenue  
Suite D-E

- ±2,904 SF
- Available now



Grade Level Door



*SUITES D & E  
SECOND FLOOR*

