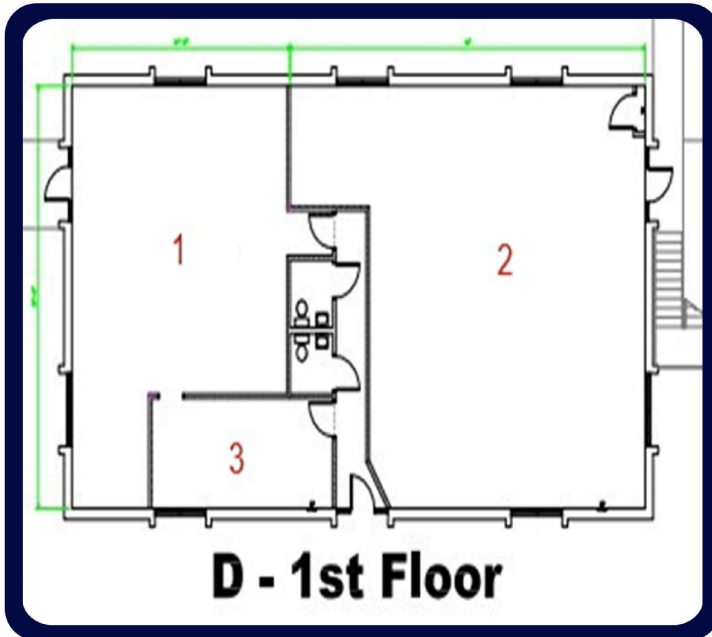


OFFICE SPACE FOR LEASE

1120 SOUTH POINTE PROPERTIES



D - 1ST FLOOR

This area has been demolished for renovation. The entire area is approximately 2,727. It is available for rebuilding a beautiful space specifically to meet your needs. There are three entrances (one to the inside parking lot, one to the back parking lot and the third to the courtyard). It has private restroom and kitchenette.



1120 SOUTH POINTE PROPERTIES, LLC

1120 S Pointe Parkway
Shreveport, LA 71105

Greg.teeters@outlook.com

318-573-3892