

RETAIL | FOR LEASE

Anchor

POINTE RETAIL



*CONCEPTUAL DRAWING FOR MARKETING PURPOSES ONLY

16857 KIMBALL AVENUE
BENNINGTON, NEBRASKA 68007

CBRE

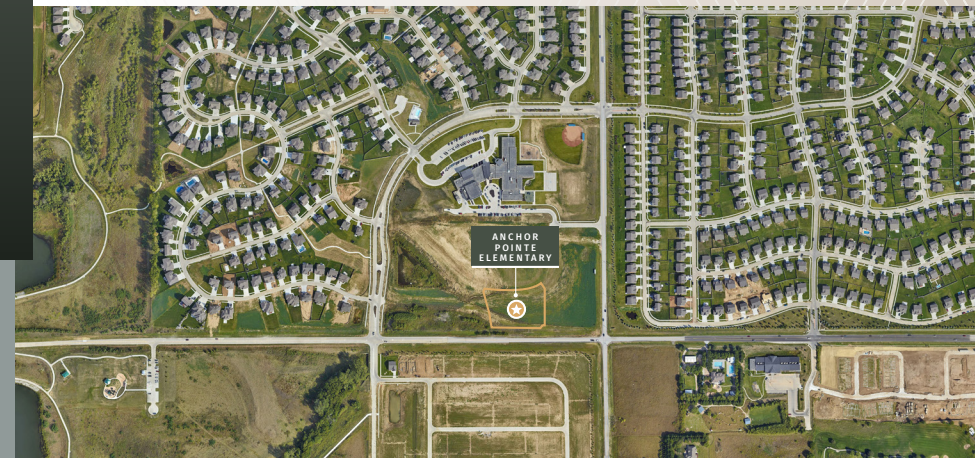
Property Information

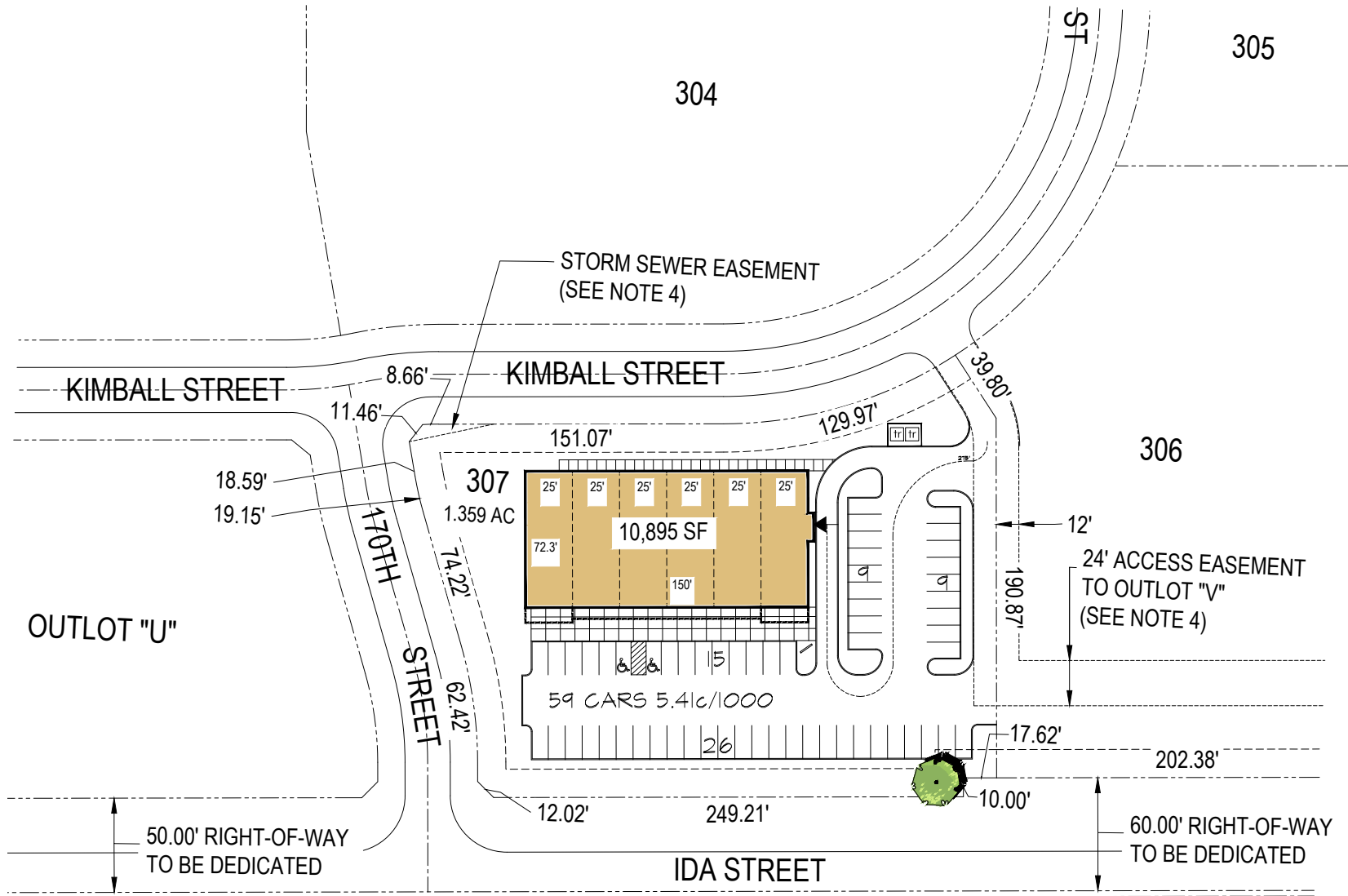
RENTAL RATE \$30.00-\$32.00 PSF

RENTAL TYPE NNN

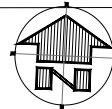
SPACE AVAILABLE 1,500-10,875 SF

- + New prime retail building located in fast growing Bennington area.
- + Located at the NWC of 168th & Ida near Flanagan Lake with strong demographics.
- + End-cap, drive-thru space available.
- + Mixed-Use zoning that fits a wide variety of uses.





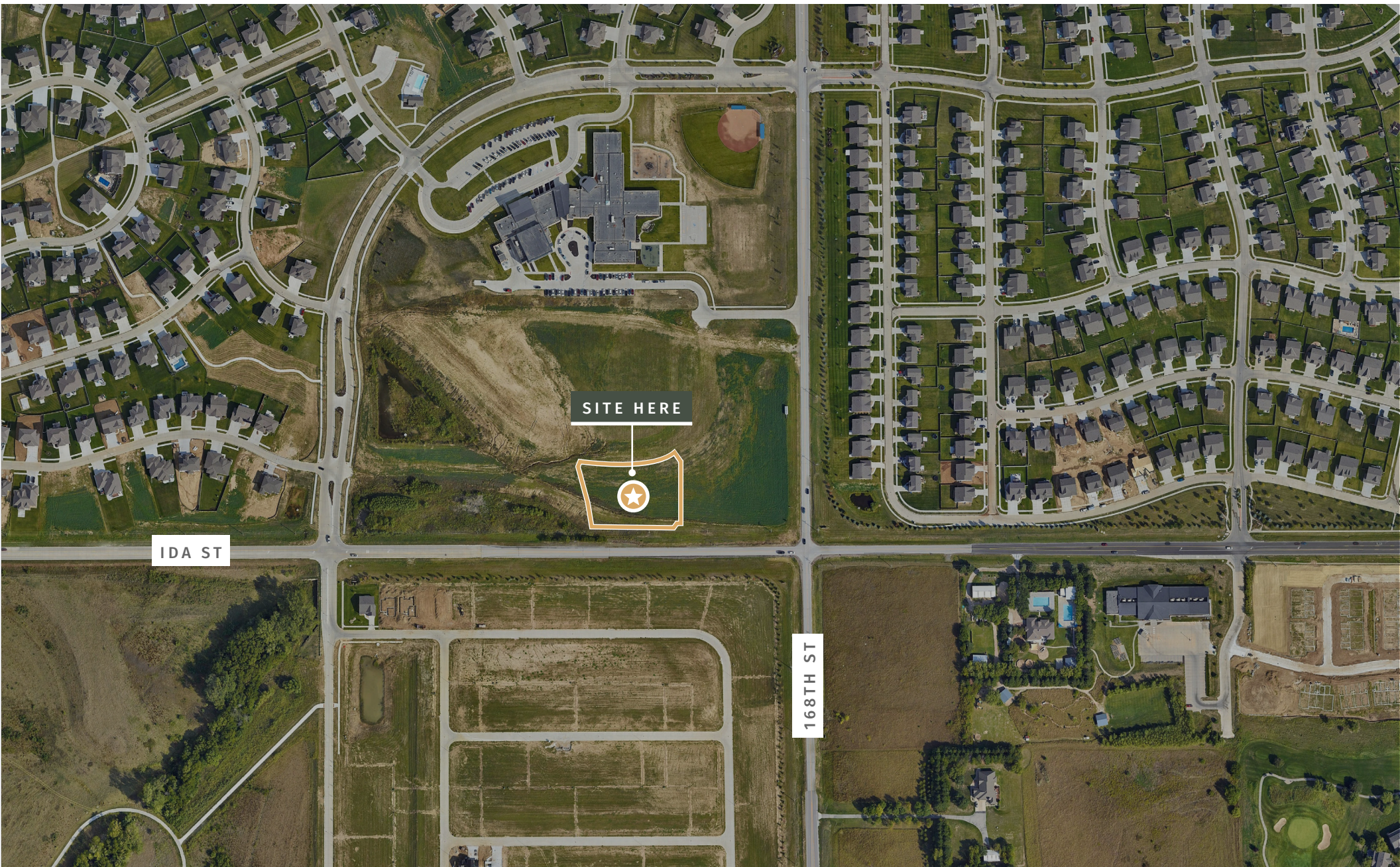
SITE PLAN
SCALE: 1" = 20'-0"

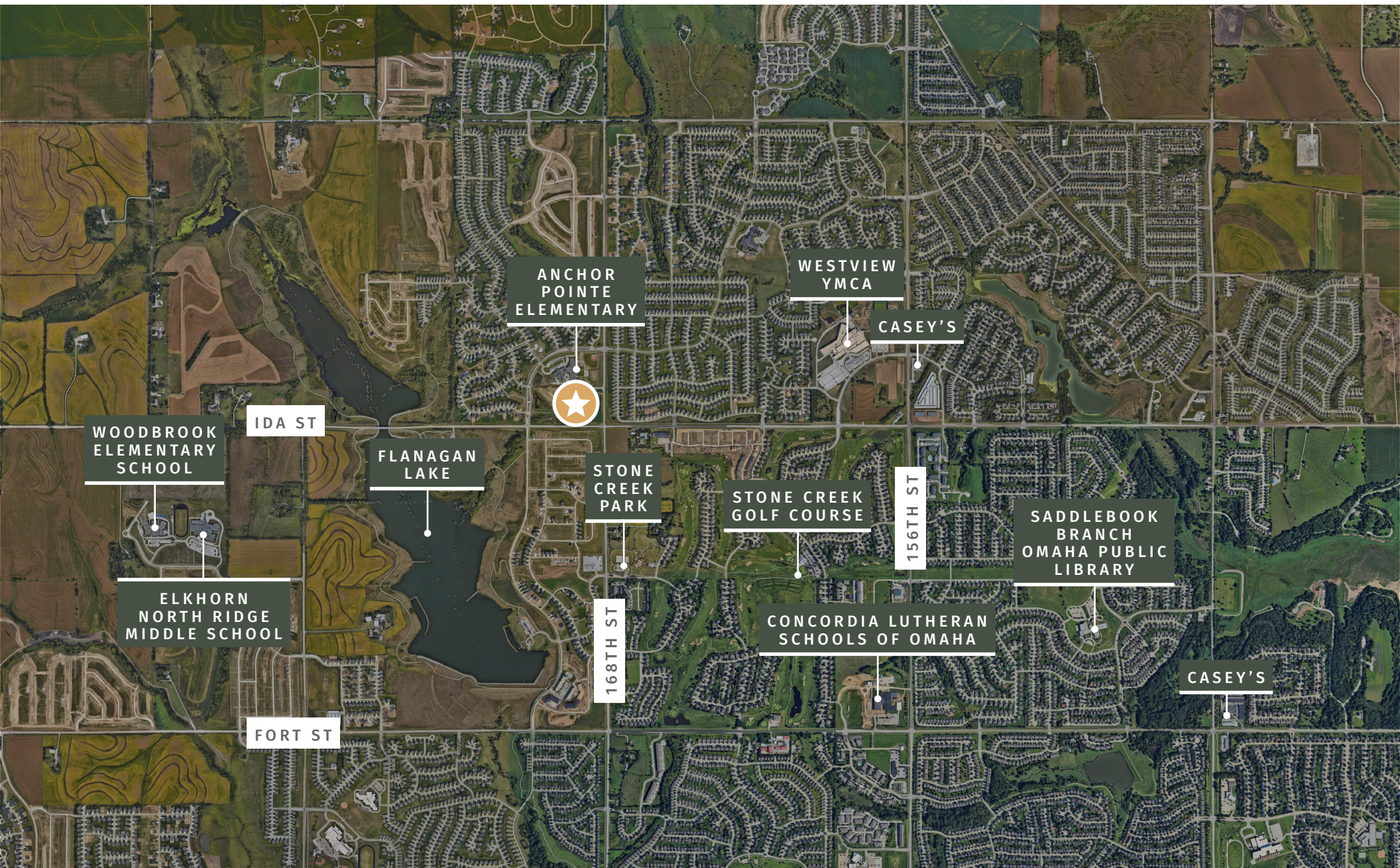


*CONCEPTUAL SITE PLAN, MAY VARY FROM FINAL DESIGN

RETAIL | FOR LEASE | ANCHOR POINTE

PROPERTY LOCATION







Anchor

POINTE RETAIL

AREA DEMOGRAPHICS

DEMOGRAPHIC COMPREHENSIVE	1 MILE	3 MILES	5 MILES
POPULATION			
2024 Population	5,625	55,605	126,386
2029 Population - Projection	6,179	58,156	132,475
2020-2024 Annual Population	8.93%	2.14%	1.55%
GENERATIONS			
Generation Alpha	13.7%	13.5%	12.1%
Generation Z	25.8%	24.3%	23.6%
Millennials	21.5%	26.8%	25.7%
Generation X	21.2%	19.4%	19.0%
Baby Boomers	15.2%	13.3%	16.2%
Greatest Generations	2.6%	2.6%	3.4%
HOUSEHOLD INCOME			
Average Household Income	\$181,409	\$156,864	\$152,372
Median Household Income	\$149,843	\$125,077	\$117,337
HOUSING VALUE			
Median Home Price	\$395,937	\$353,394	\$336,515
Average Home Price	\$411,832	\$372,021	\$377,454
HOUSING UNITS			
Owner-Occupied Housing	85.7%	75.9%	72.7%
Renter-Occupied Housing	6.0%	19.8%	23.0%

Anchor

P O I N T E R E T A I L

Listing Agent is a licensed sales person in the State of Nebraska and has equity in the Property

© 2025 CBRE, Inc. All rights reserved. This information has been obtained from sources believed reliable but has not been verified for accuracy or completeness. CBRE, Inc. makes no guarantee, representation or warranty and accepts no responsibility or liability as to the accuracy, completeness, or reliability of the information contained herein. You should conduct a careful, independent investigation of the property and verify all information. Any reliance on this information is solely at your own risk. CBRE and the CBRE logo are service marks of CBRE, Inc. All other marks displayed on this document are the property of their respective owners, and the use of such marks does not imply any affiliation with or endorsement of CBRE. Photos herein are the property of their respective owners. Use of these images without the express written consent of the owner is prohibited. rev060625aw

Jason Ruegg
Senior Associate
+1 402 697 5842
jason.ruegg@cbre.com

CBRE