

2101 FLOTILLA

MONTEBELLO, CA

326,517 SF FOR LEASE

NEWMARK

 DWS

www.2101flotilla.com



2101 FLOTILLA STREET

MONTEBELLO, CA



Location



Ideal Central LA Location



Rare Infill Los Angeles Class A "Big Box" Building (Built In 2002)



Excellent Access to Major Freeways and Less Than 2 Miles from (5) Freeway On/Off Ramps



Immediately Adjacent to Montebello/Commerce Metrolink Station



2 Street Access via Yates Avenue and Vail Avenue

Features



14,848 SF Offices (2 Pods)
West Pod: 12,544 SF - Brand New
East Pod: 2,304 SF



66 Dock High Positions
2 Ground Level Ramps



30' Clearance



ESFR Sprinklers



Large Fenced & Secured Yard with Wrought Iron Gates



60' Staging Bay
50' x 52' Column Spacing



100% Concrete Truck Court with $\pm 167'$ Turning Radius



Excess Trailer Storage (± 70 Stalls)

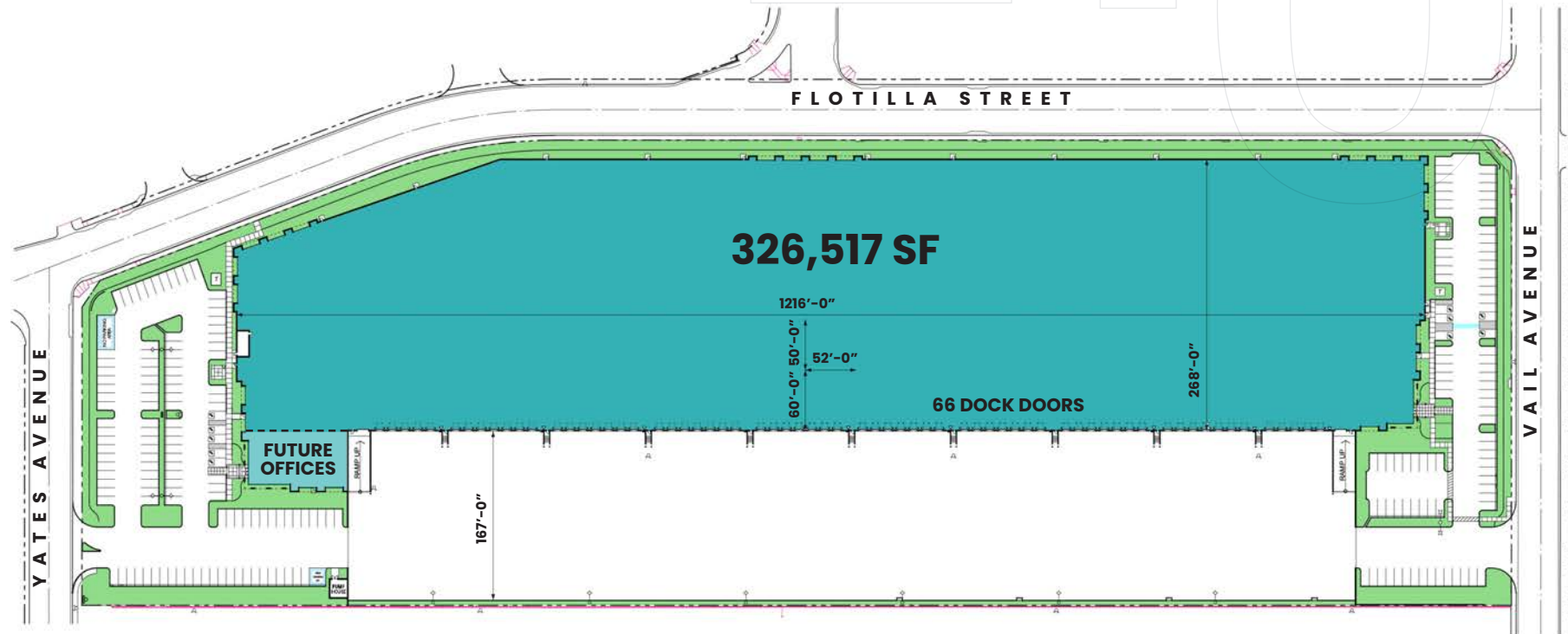


3600 AMPS (2 Panels)
East Panel: 1600 AMPS
West Panel: 2000 AMPS

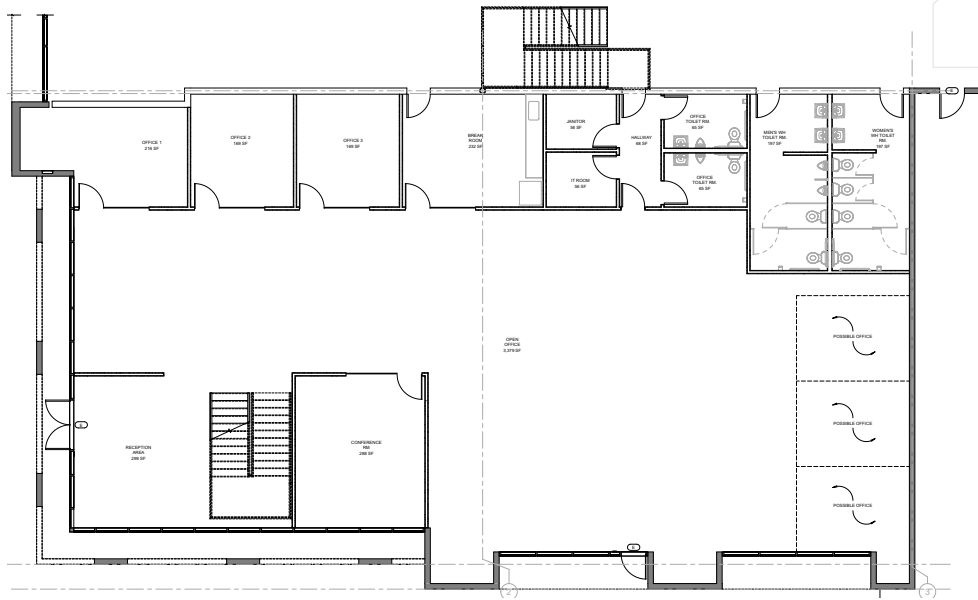


213 Auto Parking Spaces (More Possible)

2101 FLOTILLA STREET
MONTEBELLO, CA



2101 FLOTILLA STREET MONTEBELLO, CA



OFFICE - GROUND LEVEL: 6,272 SF

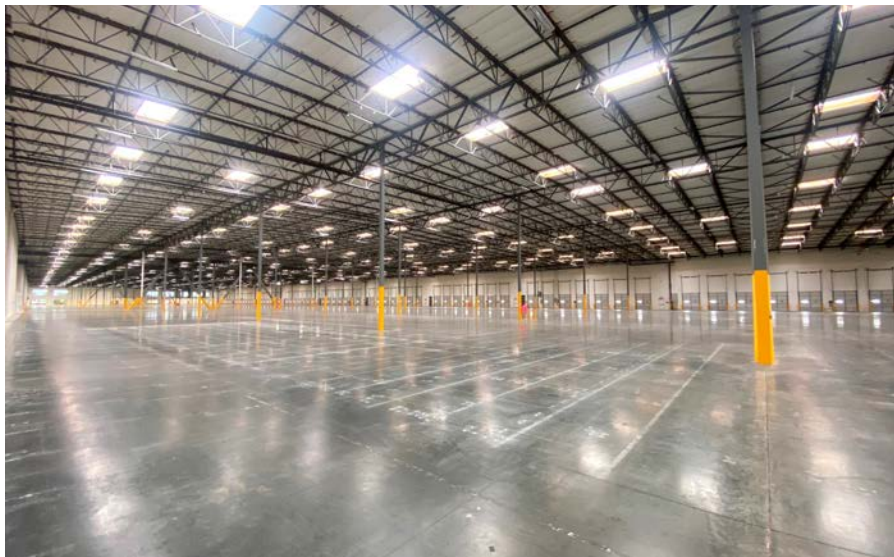
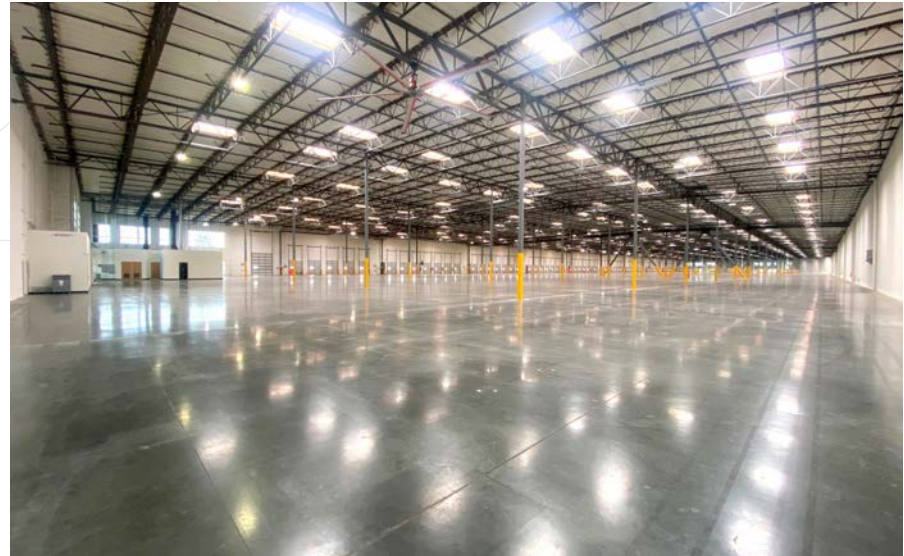


OFFICE - MEZZANINE LEVEL: 6,272 SF

TOTAL OFFICE: 12,544 SF

2101 FLOTILLA STREET

MONTEBELLO, CA

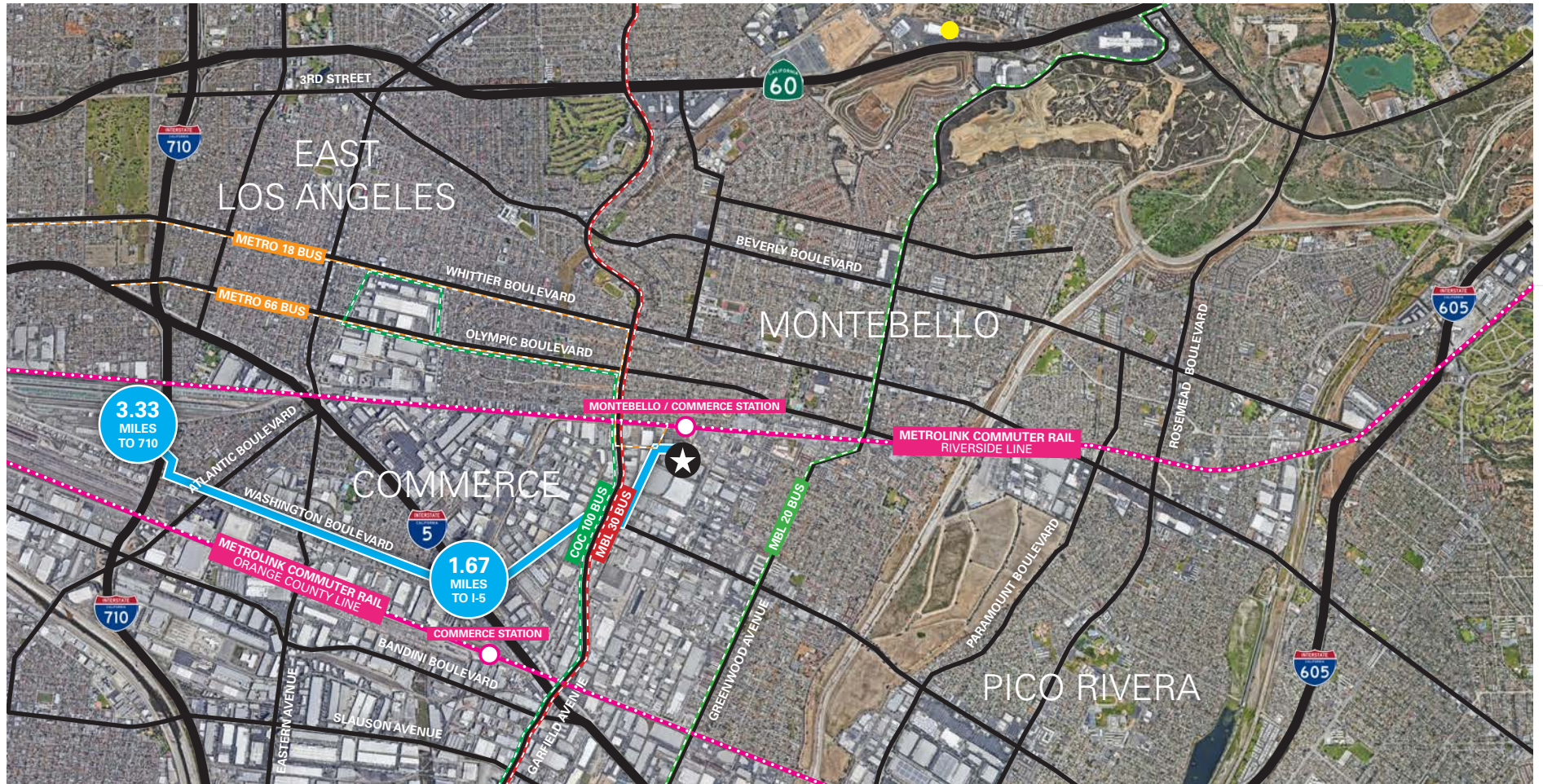


2101 FLOTILLA STREET

MONTEBELLO, CA

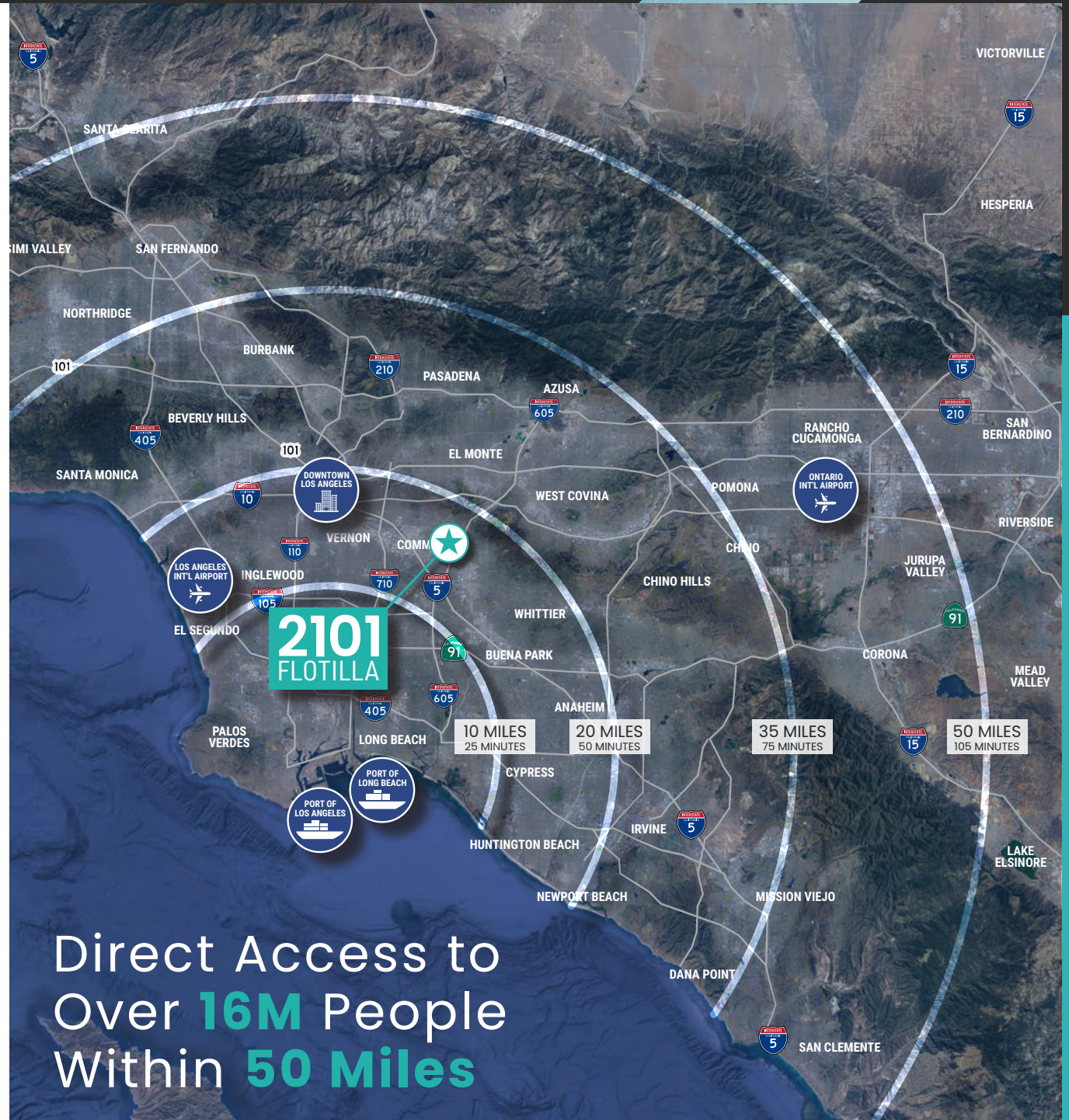


2101 FLOTILLA STREET MONTEBELLO, CA



Distance from Subject Property

	5 FREEWAY	1.5 MILES
	HIGHWAY 60	3 MILES
	710 FREEWAY	3.5 MILES
	605 FREEWAY	6 MILES
	10 FREEWAY	7.9 MILES
	DOWNTOWN LOS ANGELES	9.7 MILES
	PORT OF LONG BEACH	22 MILES
	LOS ANGELES INT'L AIRPORT	22 MILES
	PORT OF LOS ANGELES	23 MILES
	ONTARIO INT'L AIRPORT	35 MILES



FOR MORE INFORMATION, PLEASE CONTACT:

JOHN MCMILLAN

Vice Chairman
t 310-491-2048
john.mcmillan@nmrk.com
CA RE Lic. #01103292

JEFF SANITA

Executive Managing Director
t 310-491-2003
jeff.sanita@nmrk.com
CA RE Lic. #01242202

DANNY WILLIAMS

Executive Managing Director
t 310-491-2061
danny.williams@nmrk.com
CA RE Lic. #01776416

CONNOR REEVES

Senior Managing Director
t 310-491-2088
connor.reeves@nmrk.com
CA RE Lic. #01983477

JOEY FARNEY

Associate
t 310-491-2007
joey.farney@nmrk.com
CA RE Lic. #02218932

ANDREW CONROY

Transaction Manager
t 310-491-2085
andrew.conroy@nmrk.com
CA RE Lic. #02143325

2101 FLOTILLA

MONTEBELLO, CA

www.2101flotilla.com



NEWMARK

DWS

CORPORATE LICENSE #01355491

The information contained herein has been obtained from sources deemed reliable but has not been verified and no guarantee, warranty or representation, either express or implied, is made with respect to such information. Terms of sale or lease and availability are subject to change or withdrawal without notice.