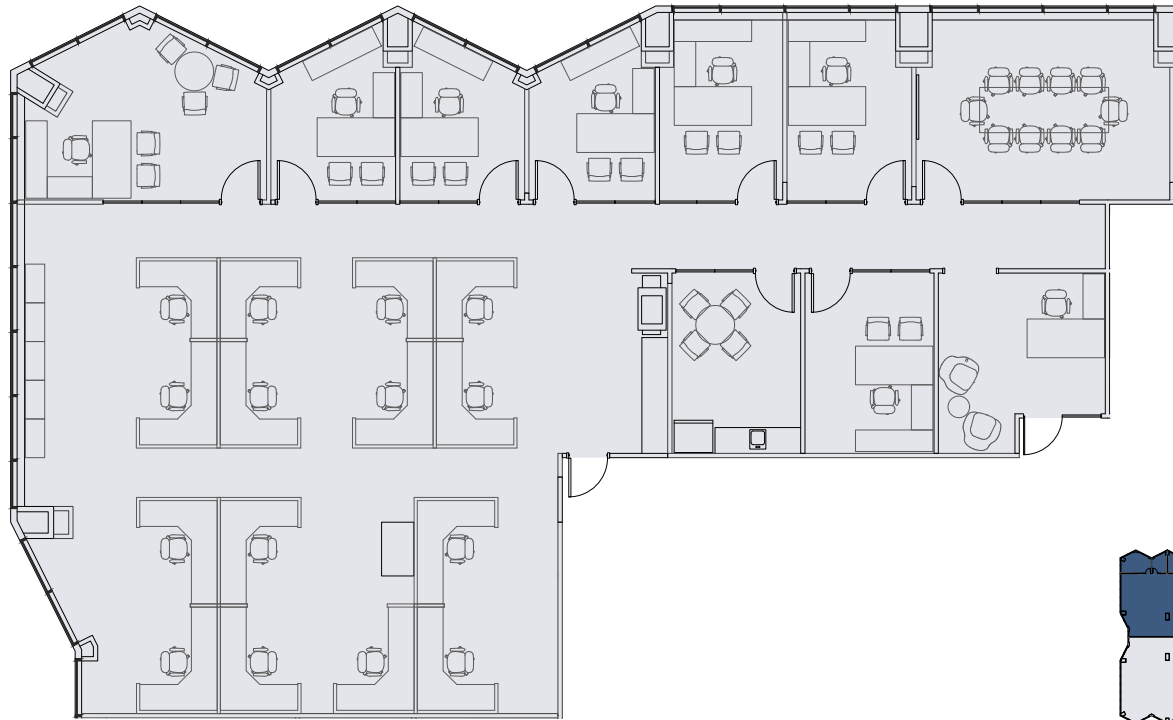


# Floor 6- Spec Plans



## Spec Suite A 4,730 RSF

*\* Finish selections shown in the Preview are examples only and do not necessarily represent the final finishes to be constructed*

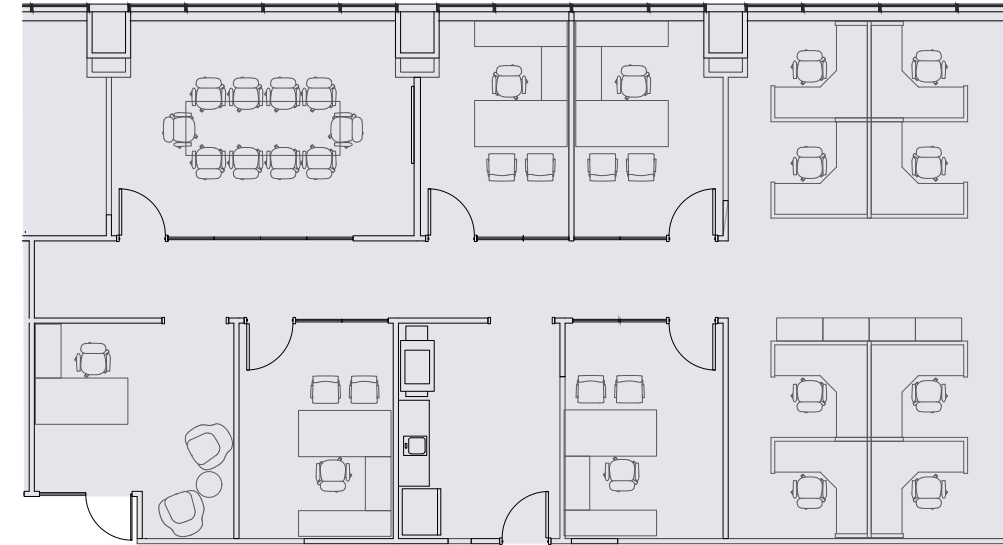


# Floor 6- Spec Plans

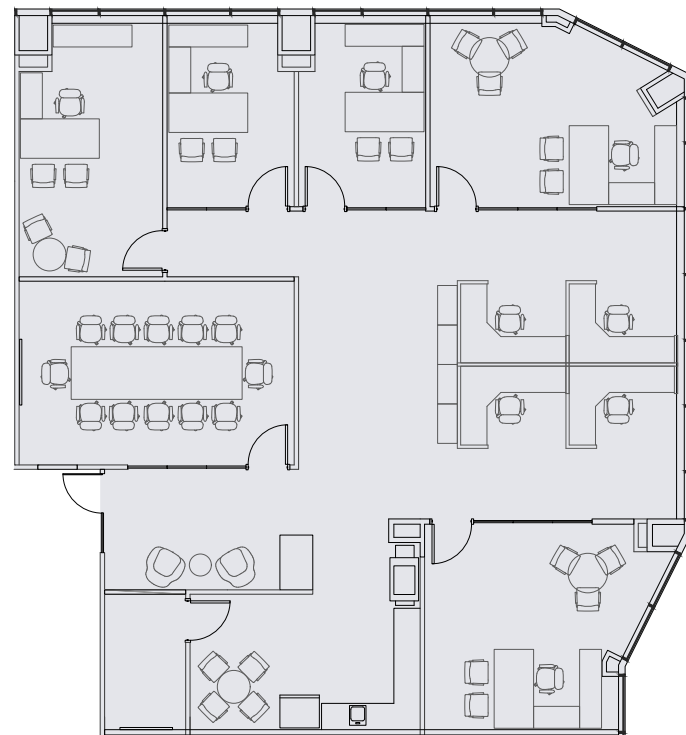


## Spec Suite B 2,720 RSF

*\* Finish selections shown in the Preview are examples only and do not necessarily represent the final finishes to be constructed*



## Spec Suite C 3,325 RSF



## Entire Block 10,775 RSF

