

OXFORD CROSSING PROFESSIONAL OFFICES

333 N. OXFORD VALLEY ROAD
LEVITTOWN, PENNSYLVANIA



SUITES 102 & 103 AVAILABLE FOR SALE

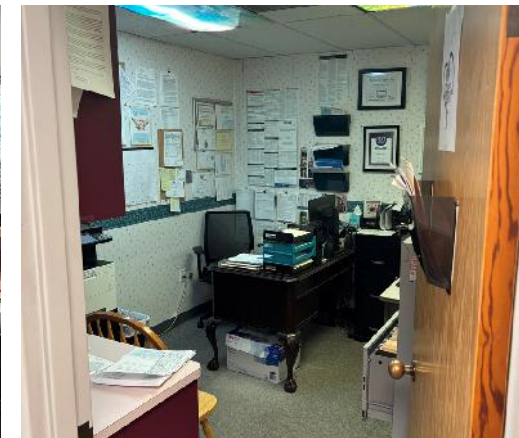
- 2,200+/- SF office condo suites
- Unit 102 - 1,500+/- SF
Unit 103 - 700+/- SF
- Both suites are in excellent condition
- Potential rental income to new owner via a partial leaseback of one Unit by current owner. Call for details.
- Private restrooms and private entrances.
- Physical therapy ideal use for Unit 102. JAG Physical Therapy was the former tenant here
- Abundant parking near entrance
- Zoning allows a wide range of medical uses
- Immediately availability
- Sale Price - \$410,000.00
- Units can also be leased

BRIAN GLANCEY, SIOR
BGLANCEY@FLYNNCO.COM
215-561-6565 X 191

The
Flynn
Company

THE FLYNN COMPANY

WWW.FLYNNCO.COM | 1621 WOOD STREET, PHILADELPHIA, PA 19103 | 215.561.6565



BRIAN GLANCEY, SIOR
BGLANCEY@FLYNNCO.COM
215-561-6565 X 191

THE FLYNN COMPANY

LEASING & INVESTMENT | PROPERTY MANAGEMENT | CONSTRUCTION SERVICES | PROPERTY MAINTENANCE
WWW.FLYNNCO.COM | 1621 WOOD STREET, PHILADELPHIA, PA 19103 | 215.561.6565



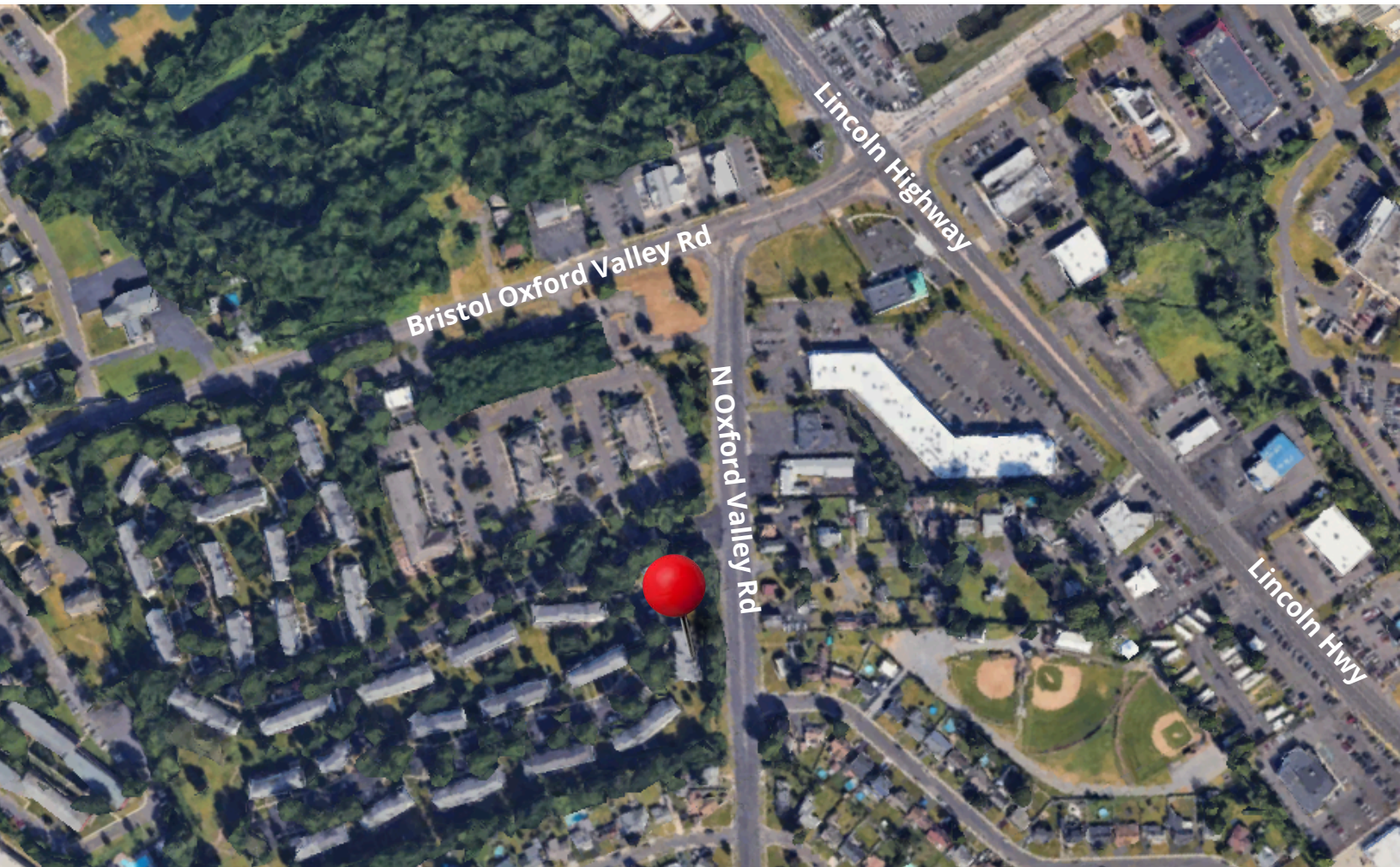
BRIAN GLANCEY, SIOR
BGLANCEY@FLYNNCO.COM
215-561-6565 X 191

THE FLYNN COMPANY

LEASING & INVESTMENT | PROPERTY MANAGEMENT | CONSTRUCTION SERVICES | PROPERTY MAINTENANCE
WWW.FLYNNCO.COM | 1621 WOOD STREET, PHILADELPHIA, PA 19103 | 215.561.6565

LOCATION

- Located within highly desirable Oxford Crossing
- Minutes from Route 295 and Route 1 interchange in Langhorne.
- Oxford Valley regional shopping mall nearby.



BRIAN GLANCEY, SIOR
BGLANCEY@FLYNNCO.COM
215-561-6565 X 191

THE FLYNN COMPANY

LEASING & INVESTMENT | PROPERTY MANAGEMENT | CONSTRUCTION SERVICES | PROPERTY MAINTENANCE
WWW.FLYNNCO.COM | 1621 WOOD STREET, PHILADELPHIA, PA 19103 | 215.561.6565