

FIND YOUR CONNECTION HERE

**910** SYLVAN  
CORPORATE  
CENTER  
SYLVAN AVENUE ENGLEWOOD CLIFFS



2,777 SF – 51,895 SF

AVAILABLE FOR LEASE

FULL FLOOR AVAILABILITY





# 910

SYLVAN AVENUE

SYLVAN  
CORPORATE  
CENTER  
ENGLEWOOD CLIFFS

MANHATTAN

GEORGE WASHINGTON BRIDGE

## CAMPUS OVERVIEW

- 4 buildings, totaling 270,000 SF with interconnecting sky bridge
- HQ opportunity
- Nicest Class A multi-tenant building located in the Englewood submarket (Trillion Dollar Mile)
- Covered parking garage
- Campus tenants include:
  - OwnBackup
  - Onex Credit Partners, LLC
  - Barnet Products
- Corporate neighbors include:
  - CNBC
  - LG Corp. USA
  - Unilever
  - Ferrari

ENTRANCE

SKY BRIDGE

CAFE

920 SYLVAN AVENUE

910 SYLVAN AVENUE

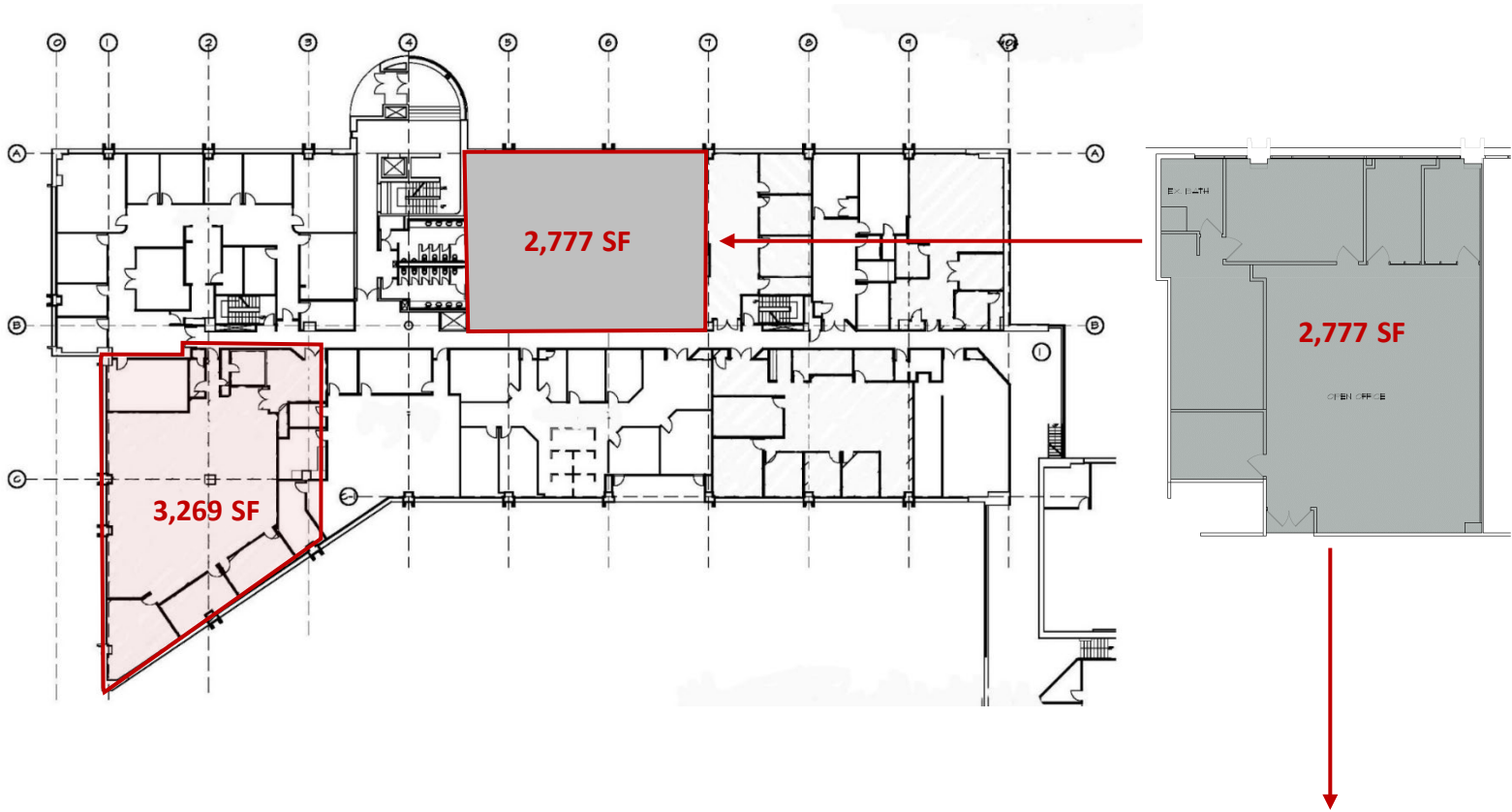
930 SYLVAN AVENUE

940 SYLVAN AVENUE

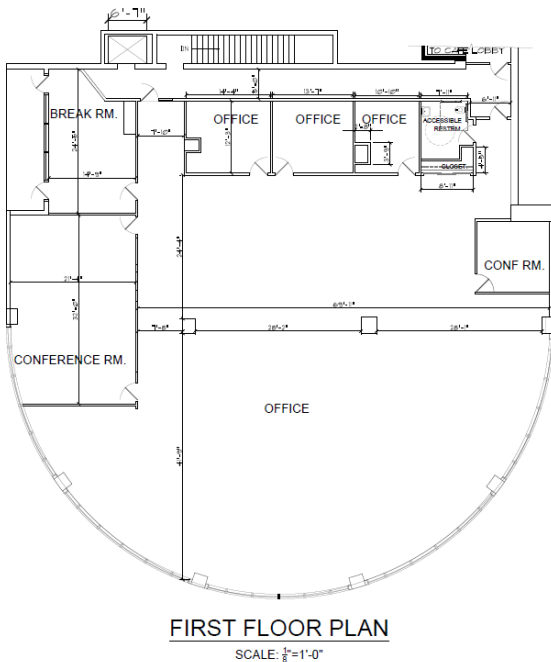


## BUILDING 910

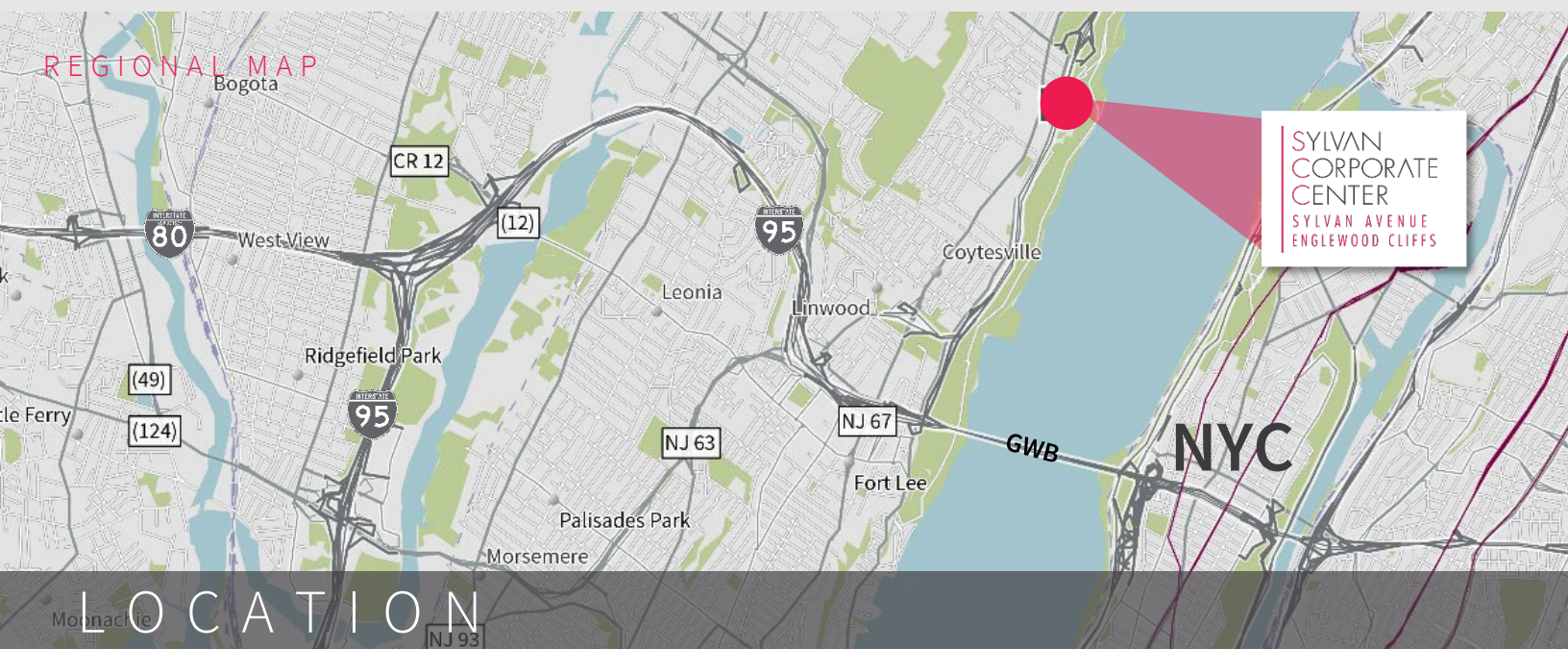
Floor 1 – 2,777 SF | 3,269 SF | 11,882 SF (Available 2022)



## BUILDING 910 | ROTUNDA BUILDING First Floor Plan







910 Sylvan Avenue, Sylvan Corporate Center, is located in Englewood Cliffs, New Jersey. Only three miles north of the George Washington Bridge, travel time to midtown Manhattan is approximately 15 minutes. The buildings are also in close proximity to I-80, I-95 (New Jersey Turnpike), Routes 4, 46, 1 & 9, the Palisades and Garden State Parkways and The Mario M. Cuomo Bridge.



For more information, please contact:

**Frank D. Recine**

+1 973 829 4738

frank.recine@am.jll.com

**Nicolas DeCotiis**

+1 973 829 4674

nicolas.decotiis@am.jll.com

Owners:

**ANDALEX CAPITAL**