

# FOR LEASE CREATIVE/LOFT

715 N CRESCENT HEIGHTS BLVD | LOS ANGELES, CALIFORNIA

## OFFERING SUMMARY

Lease Rate:	\$6,500.00 per month (MG)
Building Size:	1,750 SF
Available SF:	1,750 SF
Lot Size:	4,961 SF

## PROPERTY OVERVIEW

Single tenant freestanding style building with outdoor space, ideal for creative office tenant within walking distance to Melrose Avenue shopping and dining

## PROPERTY HIGHLIGHTS

- Creative office space in Melrose district
- Charming tudor style home built in 1927
- Outdoor area in the back of the house
- Full kitchen
- 6 parking spaces on site
- Two car garage accessed from alley
- Hardwood floors
- Operable Windows

### EXCLUSIVELY LISTED BY:

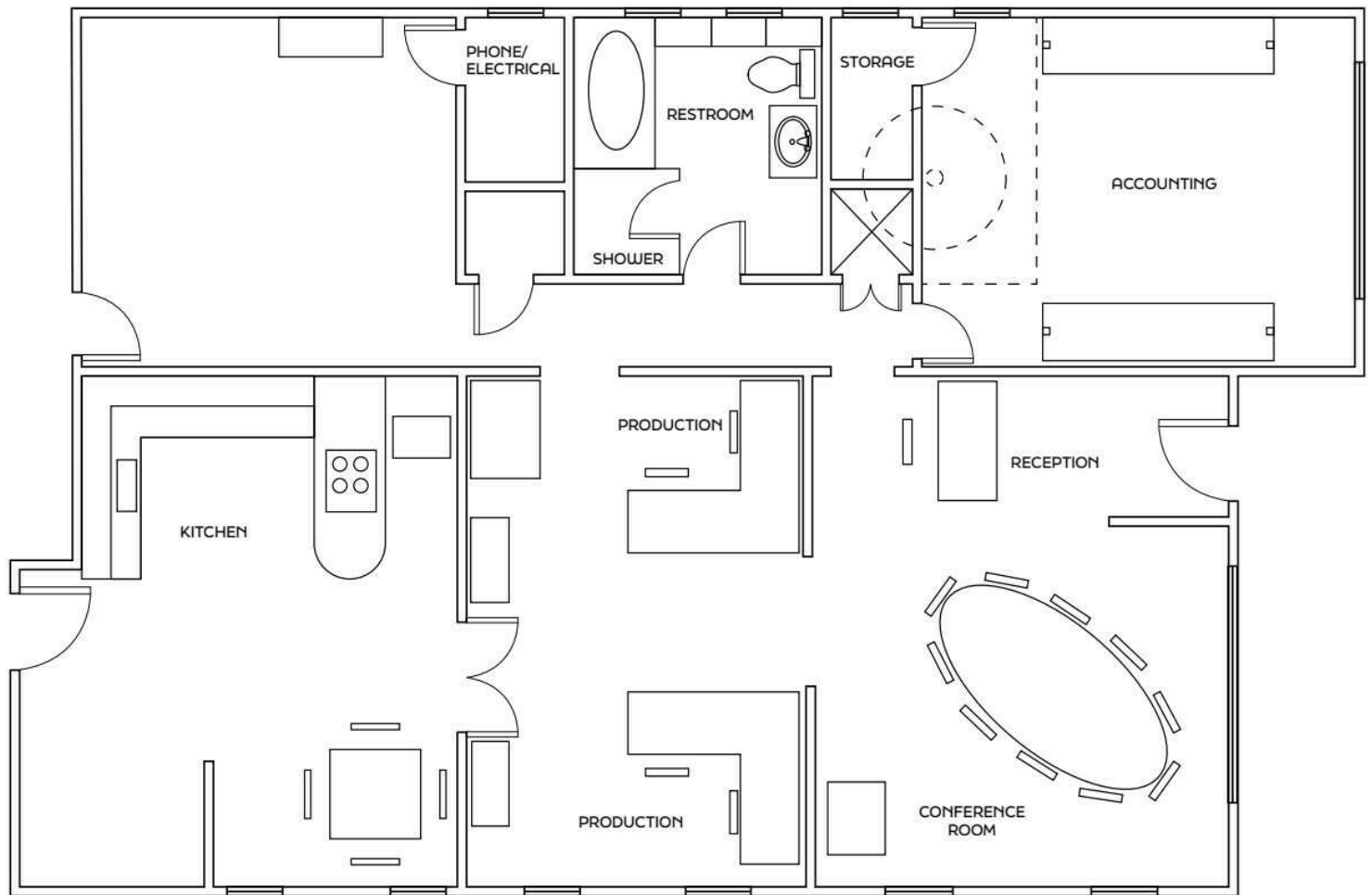
#### Marty Shelton

Vice President  
310.440.8500 Direct  
mshelton@naicapital.com  
CA DRE #00835288



[www.naicapital.com](http://www.naicapital.com)

# FLOOR PLAN



**Marty Shelton**

Vice President  
310.440.8500 Direct  
mshelton@naicapital.com

CA DRE #00835288

No warranty, express or implied, is made as to the accuracy of the information contained herein. This information is submitted subject to errors, omissions, change of price, rental or other conditions withdrawal without notice, and is subject to any special listing conditions imposed by our principals. Cooperating brokers, buyers, tenants and other parties who receive this document should not rely on it, but should use it as a starting point of analysis, and should independently confirm the accuracy of the information contained herein through a due diligence review of the books, records, files and documents that constitute reliable sources of the information described herein. Logos are for identification purposes only and may be trademarks of their respective companies. NAI Capital Commercial, Inc. CAL DRE Lic. #02130474



# ADDITIONAL PHOTOS



**Marty Shelton**

Vice President  
310.440.8500 Direct  
mshelton@naicapital.com

CA DRE #00835288

No warranty, express or implied, is made as to the accuracy of the information contained herein. This information is submitted subject to errors, omissions, change of price, rental or other conditions without withdrawal without notice, and is subject to any special listing conditions imposed by our principals. Cooperating brokers, buyers, tenants and other parties who receive this document should not rely on it, but should use it as a starting point of analysis, and should independently confirm the accuracy of the information contained herein through a due diligence review of the books, records, files and documents that constitute reliable sources of the information described herein. Logos are for identification purposes only and may be trademarks of their respective companies. NAI Capital Commercial, Inc. CAL DRE Lic. #02130474