



Colliers

For Sublease

111 Mill Creek Parkway
Chesapeake, VA

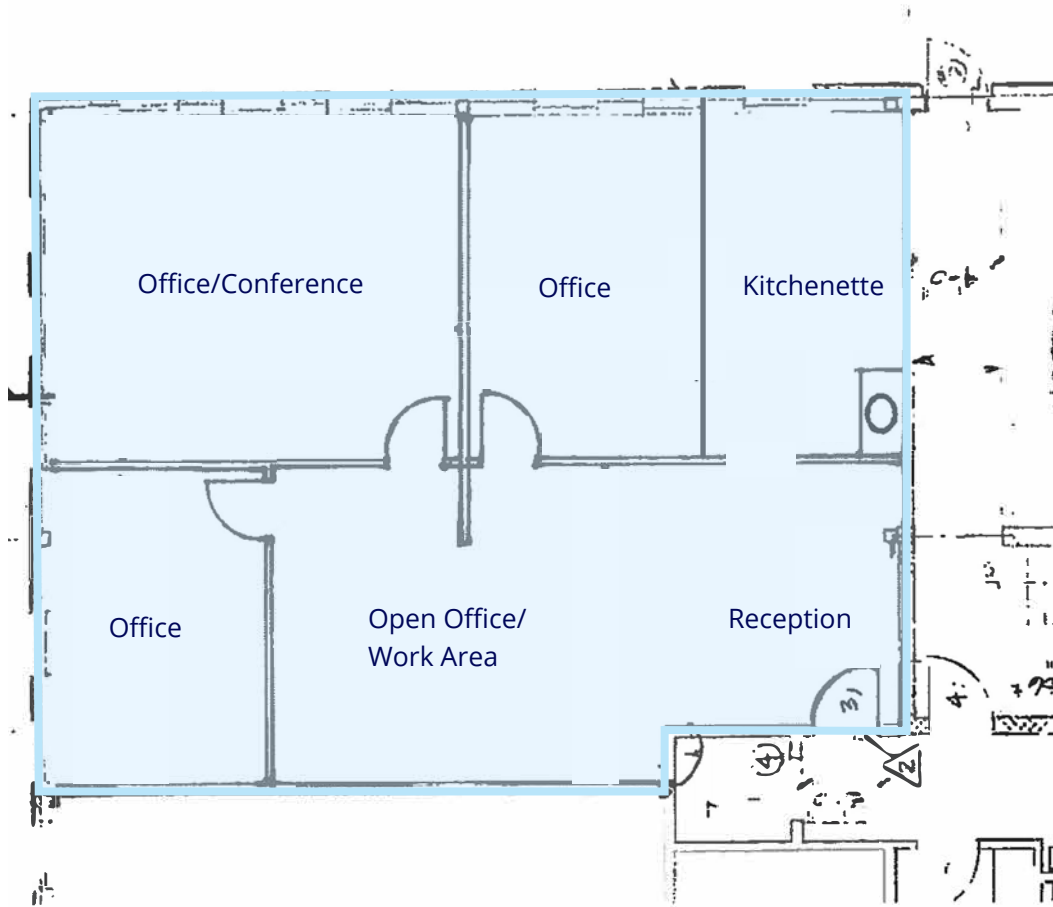
Drew Ott

Senior Associate
+1 757 228 1826
drew.ott@colliers.com



Colliers

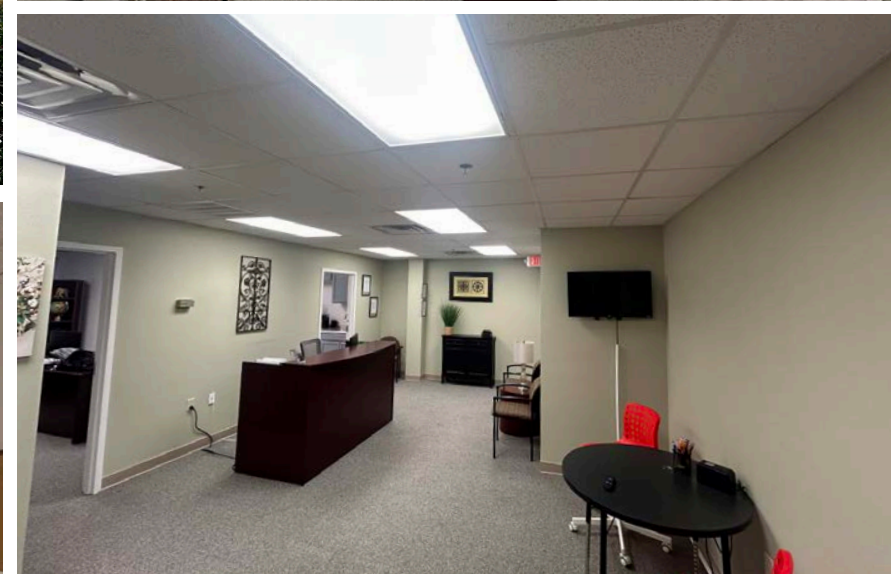
Floor Plan



Highlights

- 1,342 SF of first floor office space
- Current Lease goes through October 31, 2028
- Covered entrance for passenger drop off/pick up
- Monument signage available
- Convenient access to Cedar Road and I-64

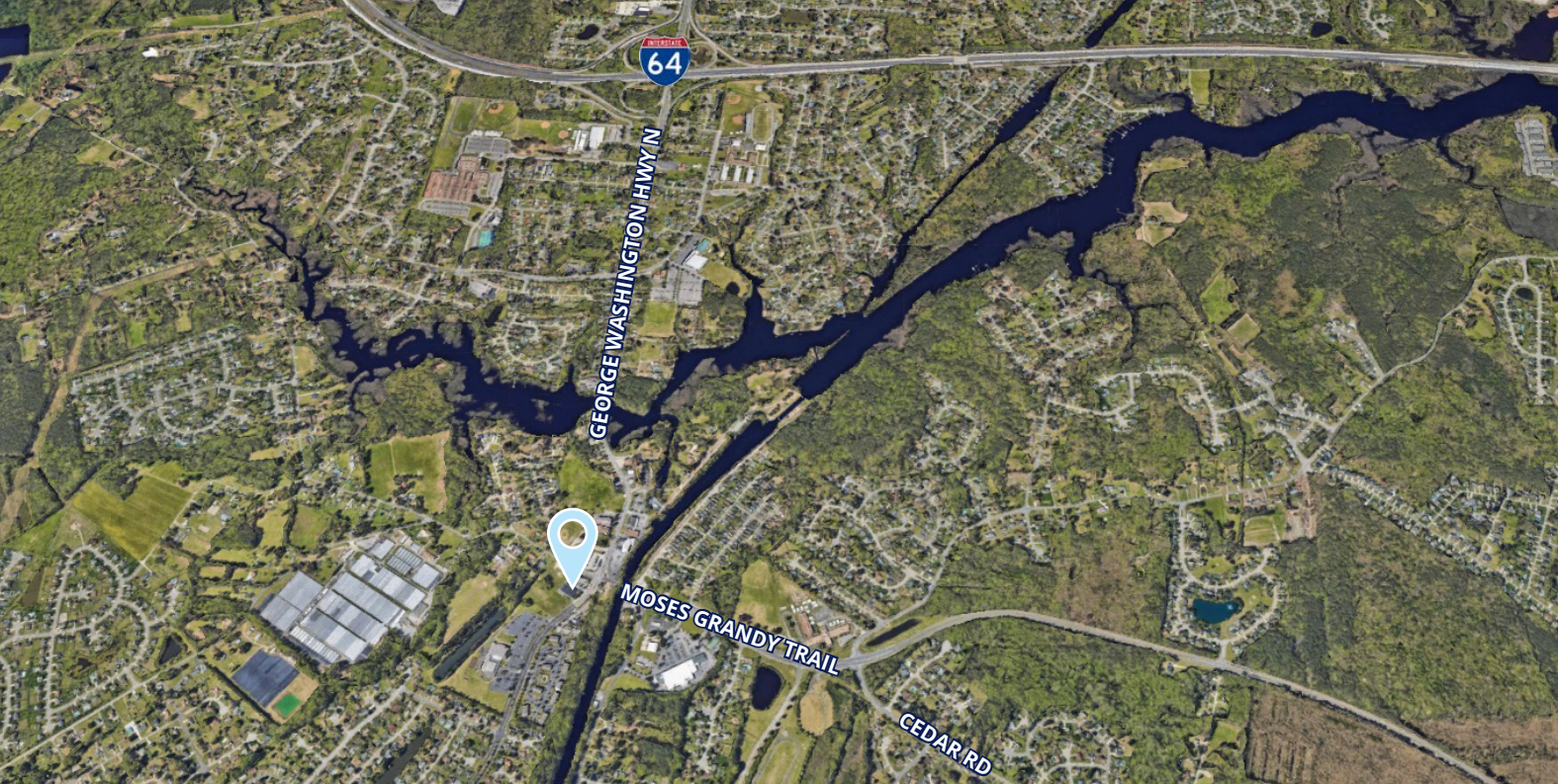
Lease rate:
Negotiable





150 West Main Street
Suite 1100
Norfolk, VA 23510
P: +1 757 490 3300

Drew Ott
Senior Associate
+ 1 757 228 1826
drew.ott@colliers.com



This document has been prepared by Colliers International for advertising and general information only. Colliers International makes no guarantees, representations or warranties of any kind, expressed or implied, regarding the information including, but not limited to, warranties of content, accuracy and reliability. Any interested party should undertake their own inquiries as to the accuracy of the information. Colliers International excludes unequivocally all inferred or implied terms, conditions and warranties arising out of this document and excludes all liability for loss and damages arising there from. This publication is the copyrighted property of Colliers International and/or its licensor(s). ©2025. All rights reserved.