

FOR LEASE

NORWALK & WHITTIER

6012-6018 NORWALK BLVD | WHITTIER, CA 90606



GEOFFREY GROSSMAN

CALDRE #1265002

310.299.4224

GEOFF@CBM1.COM

CBM1.COM

CBM1

LEASING

BROKERAGE

INVESTMENTS

FEATURES & AMENITIES

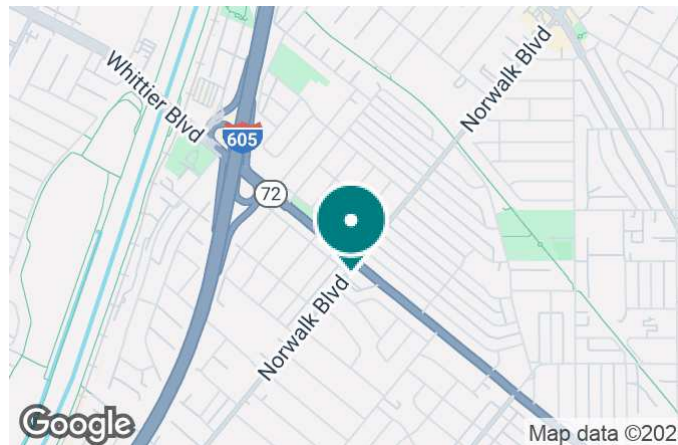
NORWALK & WHITTIER | 6012-6018 NORWALK BLVD, WHITTIER, CA 90606

BROCHURE | PAGE 2



FEATURES & AMENITIES

- Approx. 1,250 SF Former Tobacco Shop Available
- Ideal Site For a Variety of Retail Uses
- Highly Visible Storefront Exposure on Norwalk Blvd
- Just Off The Hard Corner of Norwalk Blvd & Whittier Blvd
- Nearby Senior Housing Project Currently in Development



NEIGHBORING RETAILERS



DEMOGRAPHICS	1 MILE	3 MILES	5 MILES
Total Households	7,793	50,798	134,242
Total Population	25,704	169,186	454,985
Average HH Income	\$91,110	\$81,197	\$87,265

EXCLUSIVELY REPRESENTED BY

GEOFFREY GROSSMAN

CALDRE #1265002

310.299.4224

GEOFF@CBM1.COM

PROPERTY SUMMARY

NORWALK & WHITTIER | 6012-6018 NORWALK BLVD, WHITTIER, CA 90606

BROCHURE | PAGE 3



PROPERTY DESCRIPTION

Former "Smoke Break" retail tobacco shop adjacent to a well-established liquor store. Property features convenient access, onsite parking, and high street visibility on a heavily trafficked area thoroughfare. Situated amid active retail area.

LOCATION DESCRIPTION

Property features convenient access through multiple entrances and high visibility on busy Norwalk Boulevard.

Situated at the intersection of Norwalk Boulevard + Whittier Boulevard, right off the 605 freeway.

OFFERING SUMMARY

Lease Rate:	\$1.80 per month (NNN)
Available SF:	1,250 SF
Lot Size:	20,290 SF
Building Size:	5,400 SF

SPACES	LEASE RATE	SPACE SIZE
6012-6014 Norwalk Blvd	\$2 per month	1,250 SF

GEOFFREY GROSSMAN

CALDRE #1265002

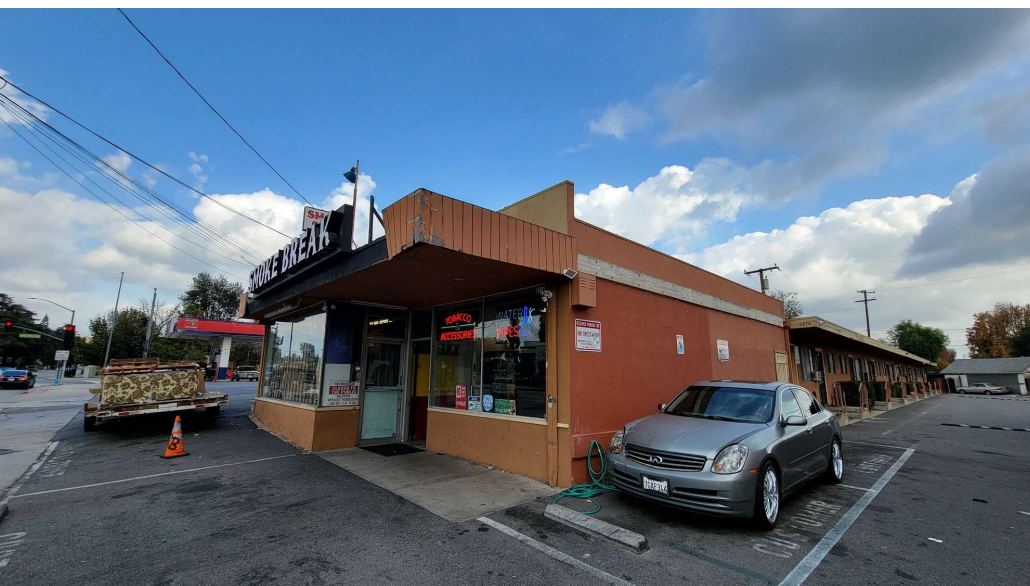
310.299.4224

GEOFF@CBM1.COM

ADDITIONAL PHOTOS

NORWALK & WHITTIER | 6012-6018 NORWALK BLVD, WHITTIER, CA 90606

BROCHURE | PAGE 4



GEOFFREY GROSSMAN

CALDRE #1265002

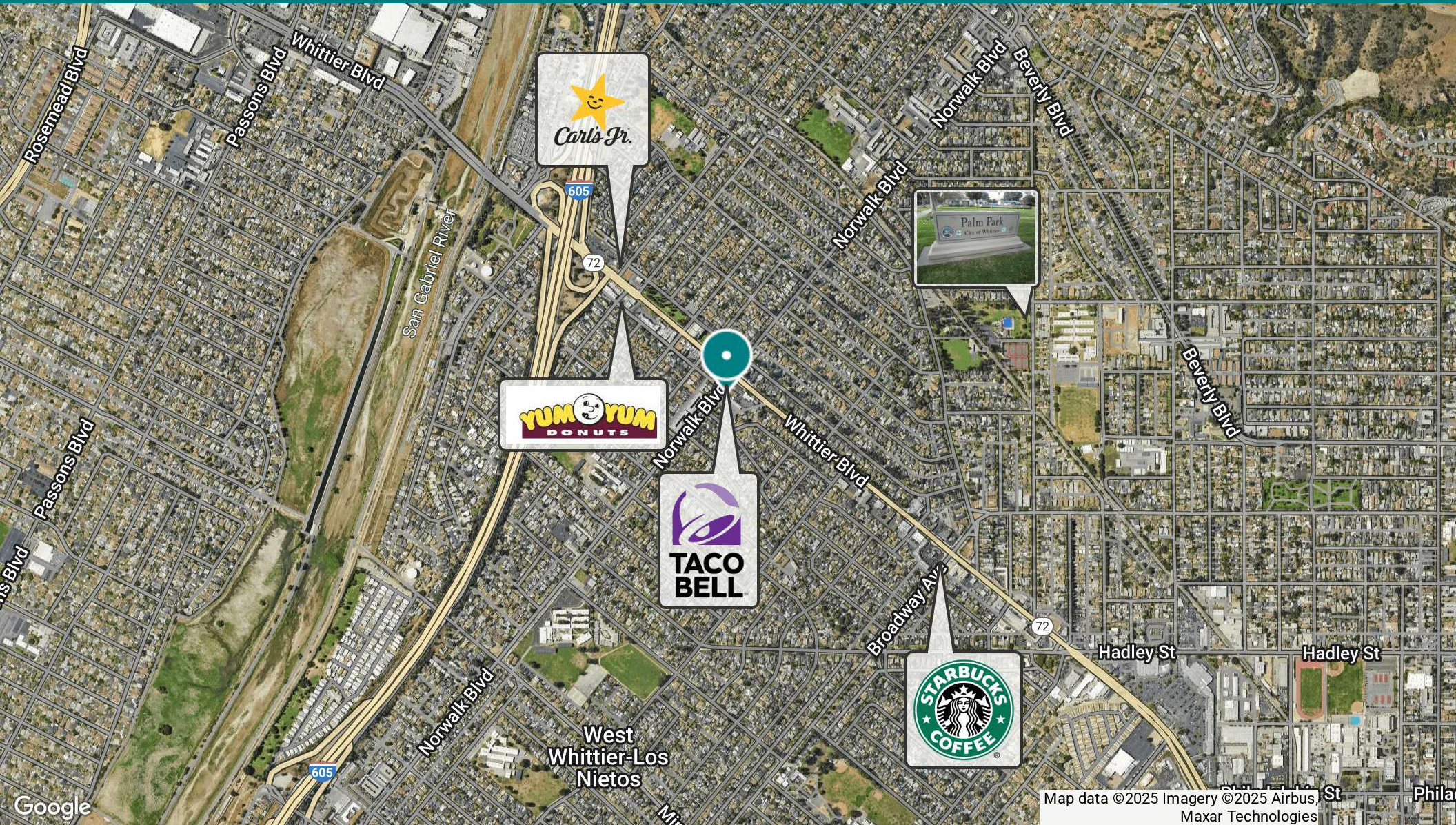
310.299.4224

GEOFF@CBM1.COM

RETAILER MAP

NORWALK & WHITTIER | 6012-6018 NORWALK BLVD, WHITTIER, CA 90606

BROCHURE | PAGE 5



Map data ©2025 Imagery ©2025 Airbus, Maxar Technologies

GEOFFREY GROSSMAN

CALDRE #1265002

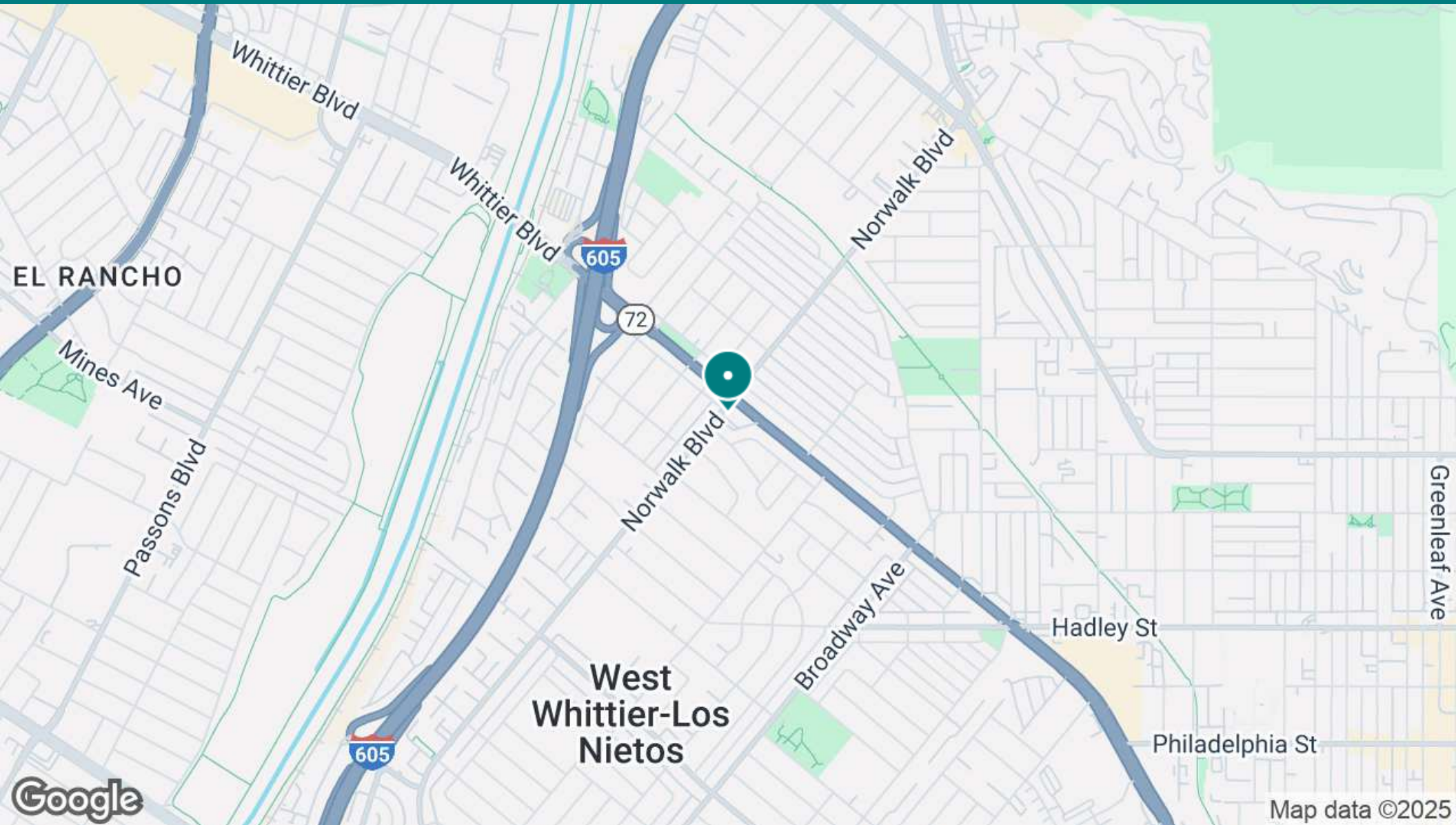
310.299.4224

GEOFF@CBM1.COM

LOCATION MAP

NORWALK & WHITTIER | 6012-6018 NORWALK BLVD, WHITTIER, CA 90606

BROCHURE | PAGE 6



GEOFFREY GROSSMAN

CALDRE #1265002

310.299.4224

GEOFF@CBM1.COM

DEMOGRAPHICS MAP & REPORT

NORWALK & WHITTIER | 6012-6018 NORWALK BLVD, WHITTIER, CA 90606

BROCHURE | PAGE 7

POPULATION	1 MILE	3 MILES	5 MILES
Total Population	25,704	169,186	454,985
Average Age	39.1	37.9	38.0
Average Age (Male)	37.0	37.0	36.8
Average Age (Female)	40.4	38.6	39.0
HOUSEHOLDS & INCOME	1 MILE	3 MILES	5 MILES
Total Households	7,793	50,798	134,242
# of Persons per HH	3.3	3.3	3.4
Average HH Income	\$91,110	\$81,197	\$87,265
Average House Value	\$497,895	\$484,183	\$513,888
ETHNICITY (%)	1 MILE	3 MILES	5 MILES
Hispanic	80.2%	82.5%	75.6%
RACE	1 MILE	3 MILES	5 MILES
% White	42.5%	43.6%	44.5%
% Black	0.5%	1.5%	1.5%
% Asian	3.8%	4.4%	10.6%
% Hawaiian	0.0%	0.0%	0.1%
% American Indian	1.6%	1.0%	1.0%
% Other	43.5%	42.7%	35.1%

* Demographic data derived from 2020 ACS - US Census

GEOFFREY GROSSMAN

CALDRE #1265002

310.299.4224

GEOFF@CBM1.COM

