

LEASED INVESTMENT FOR SALE

3704 RUFFIN ROAD - BUILDING B
SAN DIEGO, CA 92123 (Highland Skypark)



Asking Price: \$3,168,000



***Do Not Disturb Tenants**

PROPERTY HIGHLIGHTS

- Approximately 4,775 SF building
- Approximately 40,946 SF lot (0.94 ac)
- APN #421-350-01-02
- Year Built 2007
- Zoning IL-2-1
- Parking Ratio: 7.33/1,000 SF
- 35 Surface Parking Spaces
- Asking Price: \$3,168,000



Michael Golden
(760) 448-2447
mgolden@lee-associates.com
CalBRE #01359892

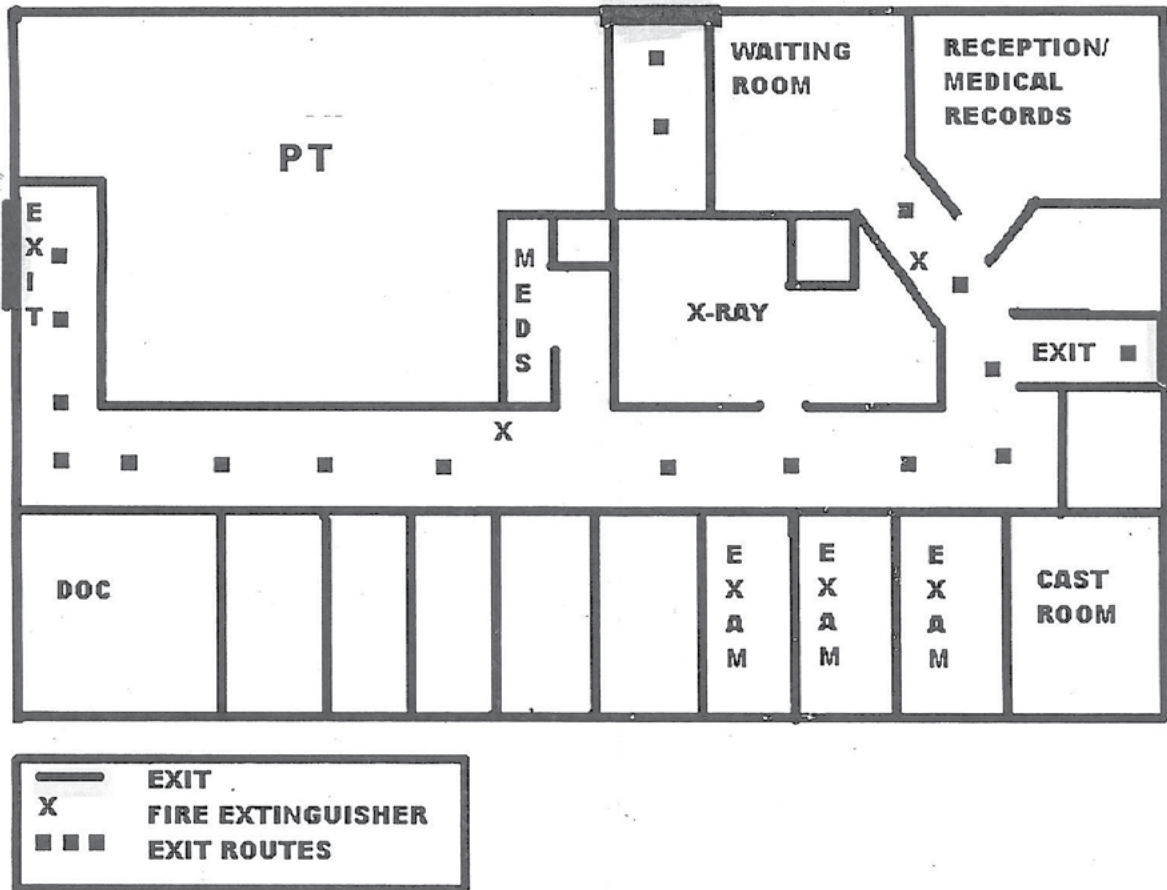
Please contact broker with questions and touring information.

All information furnished regarding property for sale, rental or financing is from sources deemed reliable, but no warranty or representation is made to the accuracy thereof and same is submitted to errors, omissions, change of price, rental or other conditions prior to sale, lease or financing or withdrawal without notice. No liability of any kind is to be imposed on the broker herein.

LEASED INVESTMENT FOR SALE

3704 RUFFIN ROAD - BUILDING B
SAN DIEGO, CA 92123 (Highland Skypark)

FLOOR PLAN



LEASED INVESTMENT FOR SALE

3704 RUFFIN ROAD - BUILDING B
SAN DIEGO, CA 92123 (Highland Skypark)



DEMOGRAPHICS



POPULATION

1 Mile: 16,506
3 Mile: 107,708
5 Mile: 382,515



AVG. HOUSEHOLD INCOME

1 Mile: \$112,954
3 Mile: \$135,324
5 Mile: \$126,083



TOTAL EMPLOYEES

1 Mile: 21,974
3 Mile: 118,643
5 Mile: 207,538

Michael Golden
(760) 448-2447
mgolden@lee-associates.com
CalBRE #01359892

Please contact broker with questions and touring information.

All information furnished regarding property for sale, rental or financing is from sources deemed reliable, but no warranty or representation is made to the accuracy thereof and same is submitted to errors, omissions, change of price, rental or other conditions prior to sale, lease or financing or withdrawal without notice. No liability of any kind is to be imposed on the broker herein.