

6360 Brackbill Blvd.

±235,200 Square Feet
Available through July 31, 2026

Mechanicsburg, PA
www.cbre.com

Rail Served/Food Grade Building



Site Plan



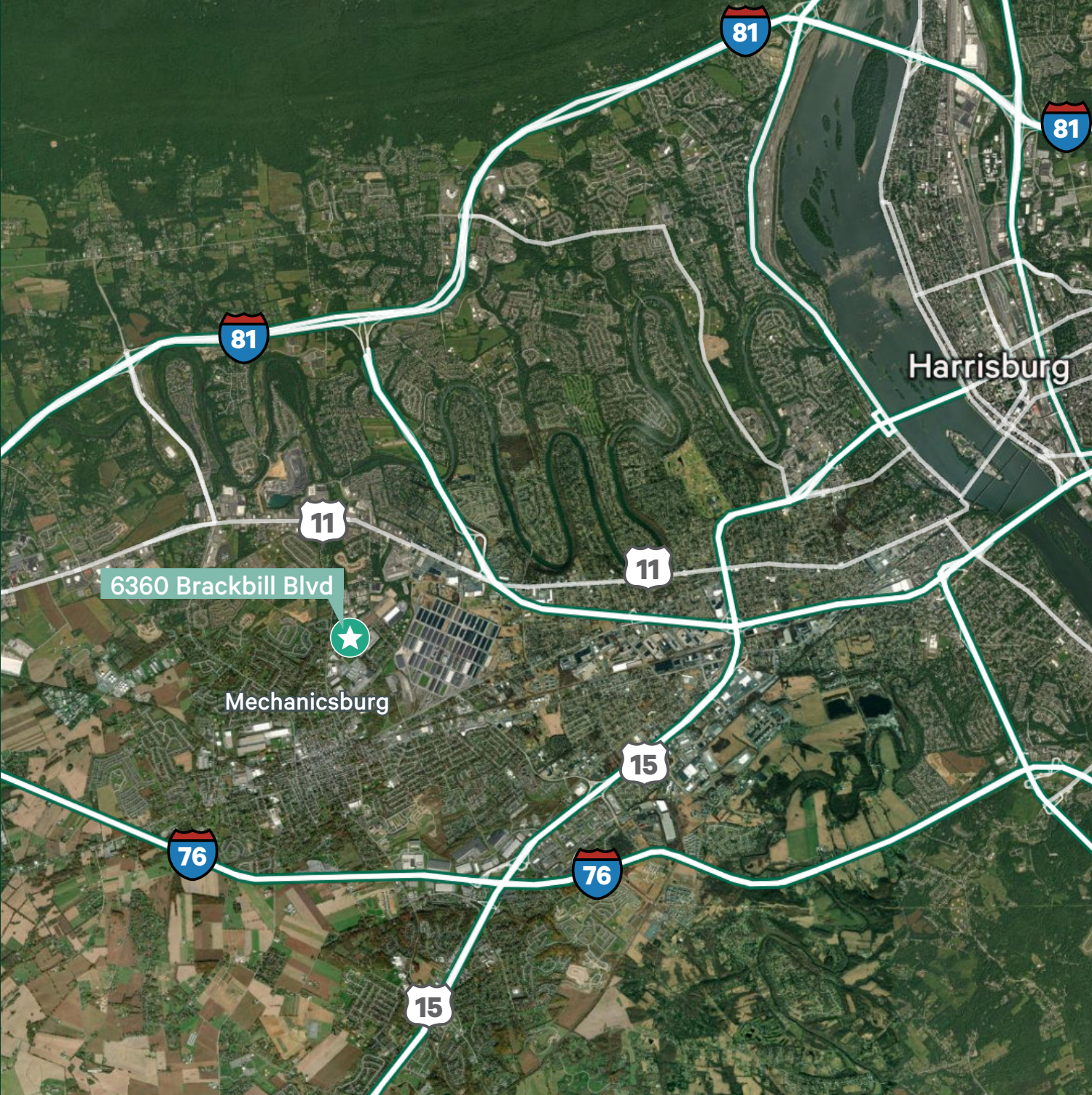
Property Specifications

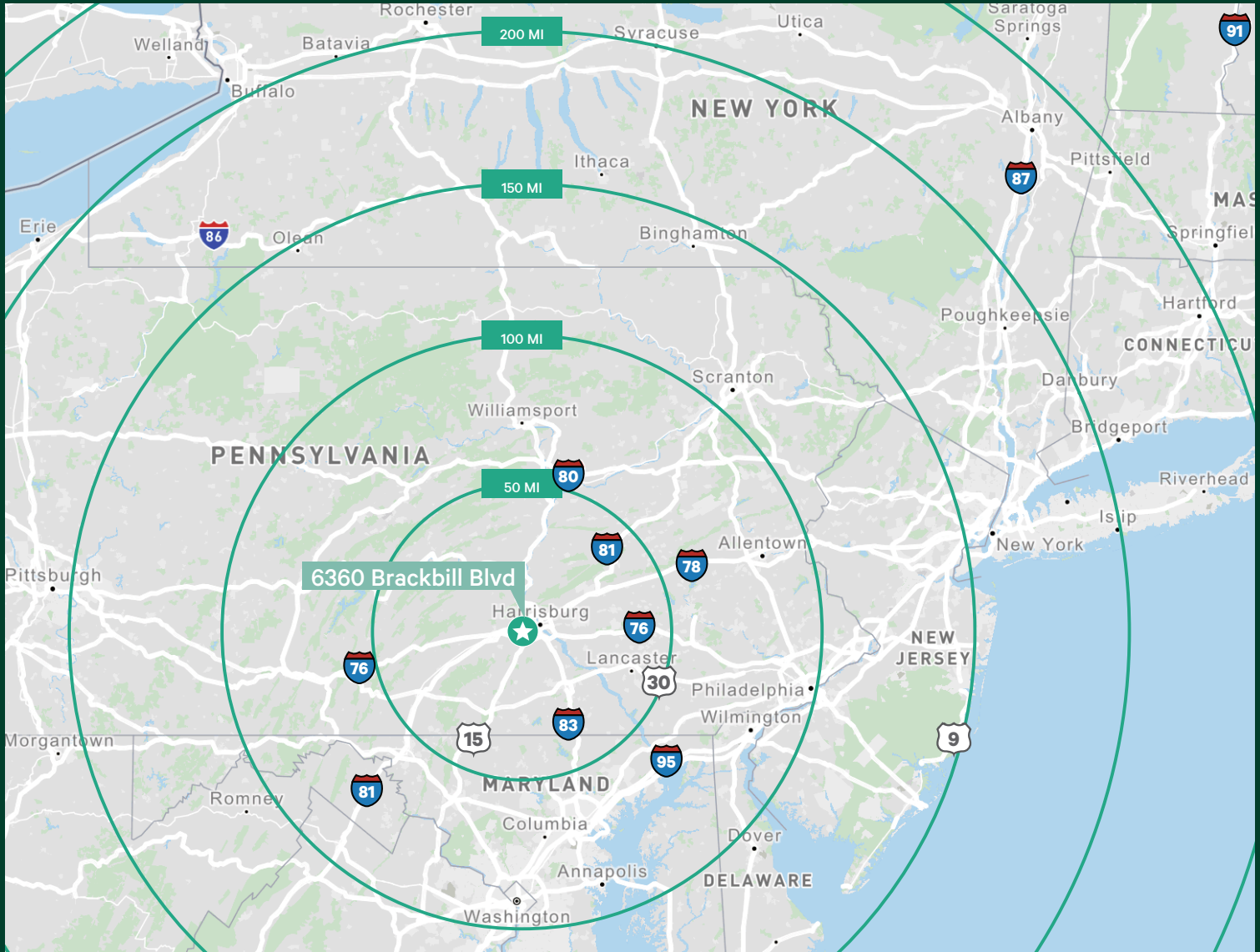
Building Size	±235,200 SF	Clear Height	26'6"
Building Dimensions	520' x 525'	Loading	39 dock doors 6 rail loading doors (Norfolk Southern)
Office	±5,129 SF	Fire Protection	100% Wet System
Year Built	1985	Car Parking Spaces	45
Column Spacing	40' x 42'	Lighting	LED

Location Map

Convenient Access to Major Highways

- + 1.3 miles to Route 11
- + 4.5 miles to PA Turnpike (I-76)
- + 3.9 miles to PA I-81
- + 8.2 miles to PA I-83
- + 4.2 miles to Route 15





Contact Us

Patrick Lafferty

Executive Vice President
+1 717 540 2704
patrick.lafferty@cbre.com

Michael Pietropola

Senior Associate
+1 717 540 2713
michael.pietropola@cbre.com

Nicholas Sather

Associate
+1 717 540 2709
nicholas.sather@cbre.com

CBRE, Inc.

5 Capital Lane, Suite 201
Harrisburg, PA 17110
+1 717 540 2700

© 2024 CBRE, Inc. All rights reserved. This information has been obtained from sources believed reliable, but has not been verified for accuracy or completeness. You should conduct a careful, independent investigation of the property and verify all information. Any reliance on this information is solely at your own risk. CBRE and the CBRE logo are service marks of CBRE, Inc. All other marks displayed on this document are the property of their respective owners, and the use of such logos does not imply any affiliation with or endorsement of CBRE. Photos herein are the property of their respective owners. Use of these images without the express written consent of the owner is prohibited.