

TWIN CREEKS MULTI-TENANT BUILDING

8420 N MADISON AVE, KANSAS CITY, MO 64155

RETAIL PROPERTY
FOR LEASE



PROPERTY DESCRIPTION

Now, pre-leasing a new construction multi-tenant building along North Madison Avenue in the rapidly expanding Twin Creeks Development offers a prime opportunity for retailers and businesses seeking exceptional visibility and accessibility in one of Kansas City North's most high-traffic corridors. Positioned along the 169 Highway, the property is strategically located to capture significant commuter and local traffic, making it an ideal location for a wide range of retail and service-oriented businesses.

With its modern design and flexible space configurations, this new development caters to businesses looking to establish or expand in a vibrant, growing neighborhood. The center offers high visibility and easy access, making it a destination for shoppers and clients.

PROPERTY HIGHLIGHTS

- Pre-leasing space!
- New Construction, a high-visibility multi-tenant building in the heart of Twin Creeks Development
- Prime location along Madison Avenue with easy access to Barry Road
- Ample parking for customers and employees
- Designed with modern architecture to appeal to today's retail tenants
- Flexible suite sizes to accommodate a variety of retail and service businesses
- Strong traffic flow from surrounding residential and commercial developments

OFFERING SUMMARY

Building Size:	10,000 SF +/-
----------------	---------------

Andrew Danner

Broker
816.612.5191
O: 816.612.5191
Andrew@WindfieldRealEstate.com

Ben Nelson, CCIM

Senior Associate
816.868.8473
O: 816.612.5191
ben@windfieldrealestate.com

WINDFIELD
REAL ESTATE
DEVELOPMENT • SALES • LEASING

THE INFORMATION PRESENTED HERE IS INTENDED SOLELY FOR REFERENCE PURPOSES FOR PROSPECTIVE PARTIES. ANY POTENTIAL BUYER SHOULD INDEPENDENTLY VERIFY ALL PROPERTY INFORMATION WITHOUT RELYING ON THE PROPERTY OWNER OR THEIR REPRESENTATIVES. OWNER AND WINDFIELD REAL ESTATE, LLC DO NOT MAKE ANY REPRESENTATIONS OR WARRANTIES REGARDING THE ACCURACY AND COMPREHENSIVENESS OF THE INFORMATION PROVIDED. IT IS ADVISABLE TO CONTACT LOCAL GOVERNMENT AGENCIES TO CONFIRM ZONING CLASSIFICATIONS, AND WE DO NOT ASSUME ANY RESPONSIBILITY.

windfieldrealestate.com

TWIN CREEKS MULTI-TENANT BUILDING

8420 N MADISON AVE, KANSAS CITY, MO 64155

RETAIL PROPERTY
FOR LEASE



Andrew Danner

Broker

816.612.5191

O: 816.612.5191

Andrew@WindfieldRealEstate.com

Ben Nelson, CCIM

Senior Associate

816.868.8473

O: 816.612.5191

ben@windfieldrealestate.com

WINDFIELD
REAL ESTATE
DEVELOPMENT • SALES • LEASING

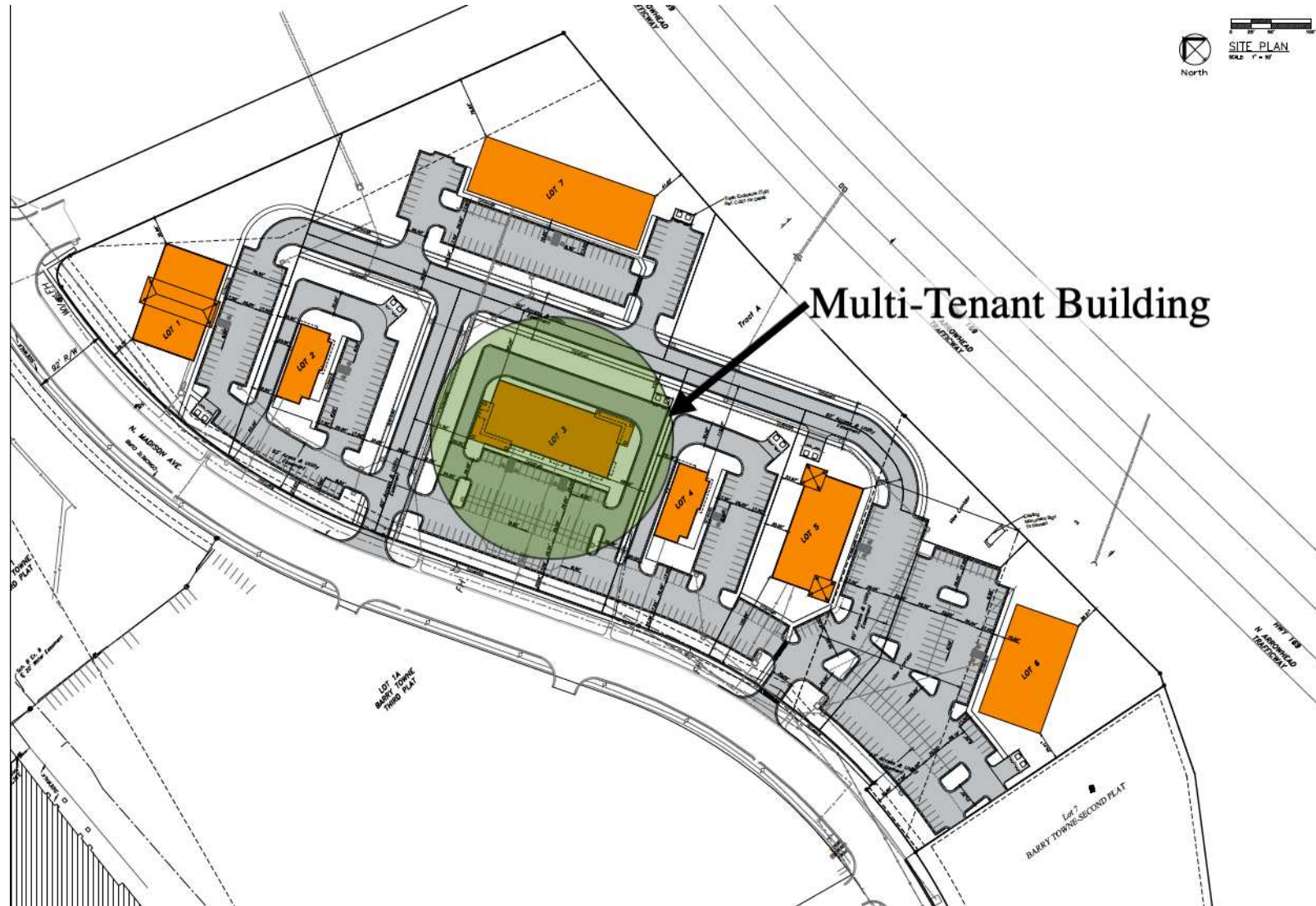
THE INFORMATION PRESENTED HERE IS INTENDED SOLELY FOR REFERENCE PURPOSES FOR PROSPECTIVE PARTIES. ANY POTENTIAL BUYER SHOULD INDEPENDENTLY VERIFY ALL PROPERTY INFORMATION WITHOUT RELYING ON THE PROPERTY OWNER OR THEIR REPRESENTATIVES. OWNER AND WINDFIELD REAL ESTATE, LLC DO NOT MAKE ANY REPRESENTATIONS OR WARRANTIES REGARDING THE ACCURACY AND COMPREHENSIVENESS OF THE INFORMATION PROVIDED. IT IS ADVISABLE TO CONTACT LOCAL GOVERNMENT AGENCIES TO CONFIRM ZONING CLASSIFICATIONS, AND WE DO NOT ASSUME ANY RESPONSIBILITY.

windfieldrealestate.com

TWIN CREEKS MULTI-TENANT BUILDING

8420 N MADISON AVE, KANSAS CITY, MO 64155

RETAIL PROPERTY
FOR LEASE



Andrew Danner

Broker
816.612.5191
O: 816.612.5191
Andrew@WindfieldRealEstate.com

Ben Nelson, CCIM

Senior Associate
816.868.8473
O: 816.612.5191
ben@windfieldrealestate.com

WINDFIELD
REAL ESTATE
DEVELOPMENT • SALES • LEASING

THE INFORMATION PRESENTED HERE IS INTENDED SOLELY FOR REFERENCE PURPOSES FOR PROSPECTIVE PARTIES. ANY POTENTIAL BUYER SHOULD INDEPENDENTLY VERIFY ALL PROPERTY INFORMATION WITHOUT RELYING ON THE PROPERTY OWNER OR THEIR REPRESENTATIVES. OWNER AND WINDFIELD REAL ESTATE, LLC DO NOT MAKE ANY REPRESENTATIONS OR WARRANTIES REGARDING THE ACCURACY AND COMPREHENSIVENESS OF THE INFORMATION PROVIDED. IT IS ADVISABLE TO CONTACT LOCAL GOVERNMENT AGENCIES TO CONFIRM ZONING CLASSIFICATIONS, AND WE DO NOT ASSUME ANY RESPONSIBILITY.

windfieldrealestate.com

TWIN CREEKS MULTI-TENANT BUILDING

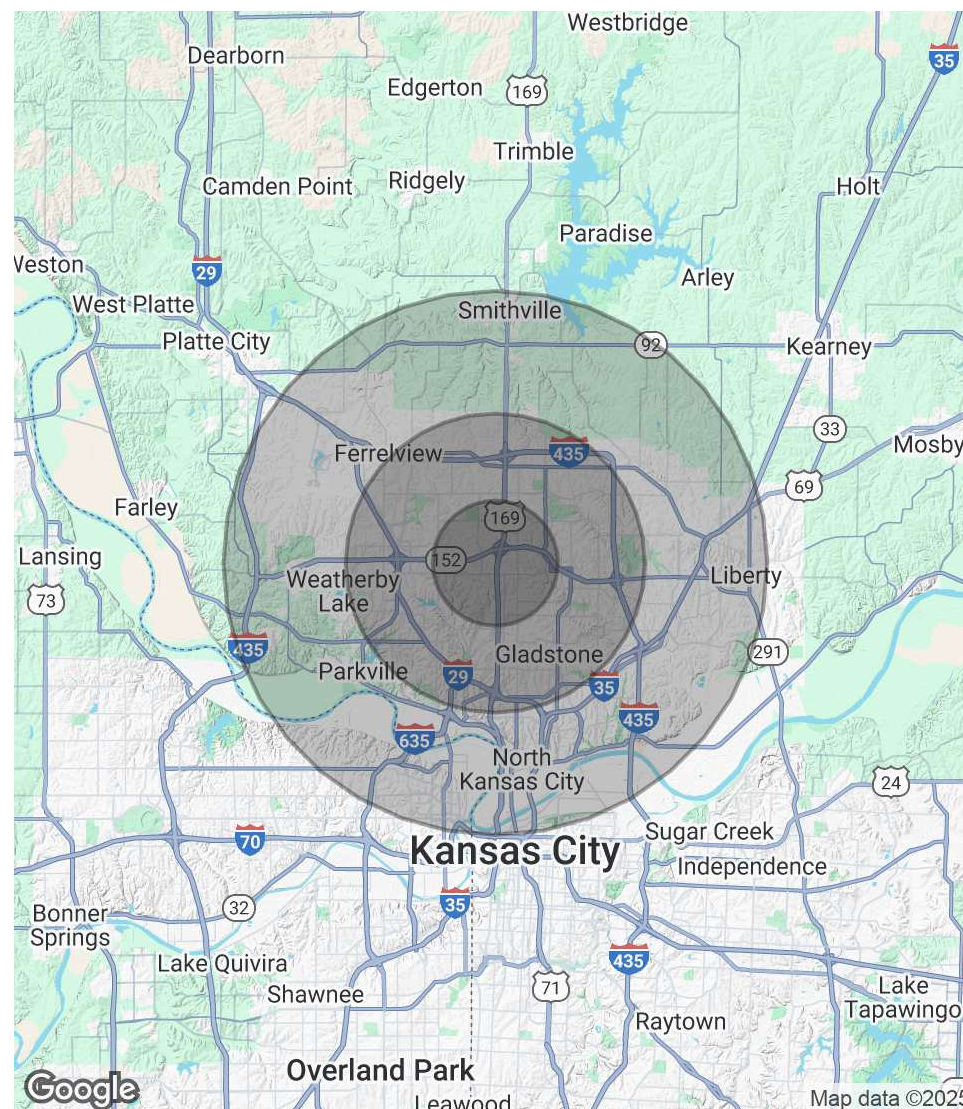
8420 N MADISON AVE, KANSAS CITY, MO 64155

RETAIL PROPERTY
FOR LEASE

POPULATION	2.3 MILES	5.5 MILES	10 MILES
Total Population	36,723	170,448	324,938
Average Age	39	39	39
Average Age (Male)	38	38	38
Average Age (Female)	41	40	40

HOUSEHOLDS & INCOME	2.3 MILES	5.5 MILES	10 MILES
Total Households	15,432	69,959	128,705
# of Persons per HH	2.4	2.4	2.5
Average HH Income	\$95,296	\$106,129	\$105,823
Average House Value	\$300,272	\$338,660	\$323,329

Demographics data derived from AlphaMap



Andrew Danner

Broker
816.612.5191
O: 816.612.5191
Andrew@WindfieldRealEstate.com

Ben Nelson, CCIM

Senior Associate
816.868.8473
O: 816.612.5191
ben@windfieldrealestate.com

WINDFIELD
REAL ESTATE
DEVELOPMENT • SALES • LEASING

THE INFORMATION PRESENTED HERE IS INTENDED SOLELY FOR REFERENCE PURPOSES FOR PROSPECTIVE PARTIES. ANY POTENTIAL BUYER SHOULD INDEPENDENTLY VERIFY ALL PROPERTY INFORMATION WITHOUT RELYING ON THE PROPERTY OWNER OR THEIR REPRESENTATIVES. OWNER AND WINDFIELD REAL ESTATE, LLC DO NOT MAKE ANY REPRESENTATIONS OR WARRANTIES REGARDING THE ACCURACY AND COMPREHENSIVENESS OF THE INFORMATION PROVIDED. IT IS ADVISABLE TO CONTACT LOCAL GOVERNMENT AGENCIES TO CONFIRM ZONING CLASSIFICATIONS, AND WE DO NOT ASSUME ANY RESPONSIBILITY.

windfieldrealestate.com