



14-16 BROAD

RED BANK, NJ

2,200 SF OF THIRD FLOOR OFFICE SPACE, NESTLED IN
THE HEART OF BUSTLING RED BANK.

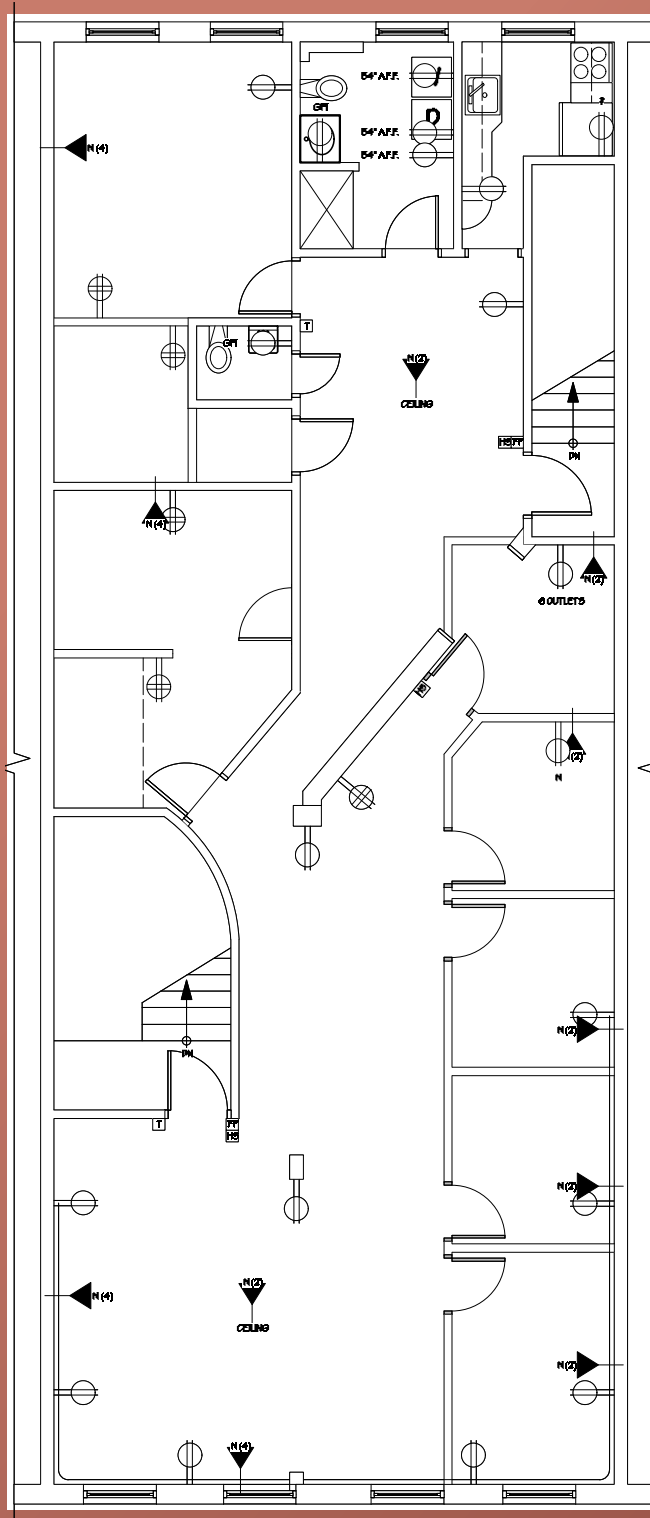
Private bathroom, galley kitchen with sink, rear entrance, wood floors
and brick walls, high ceilings, operable windows, great amount of natural light

Separately metered utilities

Signage and visibility on Broad Street







FLOOR 3 | 2,200 SF | OFFICE



IRREPLACEABLE LOCATION

Situated on the most trafficked street in Red Bank's downtown district featuring high-end shopping and dining, the Navesink River and Hackensack Meridian Health Riverview Medical Center.

AFFLUENT & EDUCATED AREA

Red Bank is surrounded by some of the wealthiest municipalities in New Jersey which include Rumson, Fair Haven and Little Silver.

	1 Miles	5 Miles	10 Miles
2021 Total Population	12,651	133,060	351,692
2026 Total Population	12,822	133,795	355,510
2021 Households	5,284	50,595	134,327
2026 Households	5,354	50,962	135,441



14-16 BROAD

RED BANK, NJ

DOUGLAS R. TWYMAN, SIOR

doug.twyman@colliers.com

Direct: +1 732 807 0338

Mobile: +1 732 236 8899

Licensed Broker Salesperson



Colliers International NJ LLC
10 Woodbridge Center Drive, Suite 1010
Woodbridge, NJ 07095
732 807 0400

No representation is made as to the accuracy of the information furnished herein and same is submitted subject to errors, omissions, change of prices, rental, or other conditions, prior sale, lease, sublease, and/or withdrawal without notice. While every attempt is made to ensure accuracy, the floor plan(s) is for guidance only. The measurements, dimensions, specifications, and other data shown are approximate and may not be to scale. We assume no responsibility for the accuracy of the floor plan(s) or for any action taken in reliance thereon. The floor plan(s) do not create any representation, warranty or contract. All parties should consult a professional, such as an architect, to verify the information contained herein. The furnishing of this information shall not be deemed a hiring. A commission in accordance with our principal's schedule of rates and conditions will be paid to the procuring Broker who executes our or our principal's brokerage agreement, subject to a fully consummated transaction upon terms and conditions acceptable to our principal. Colliers International NJ LLC