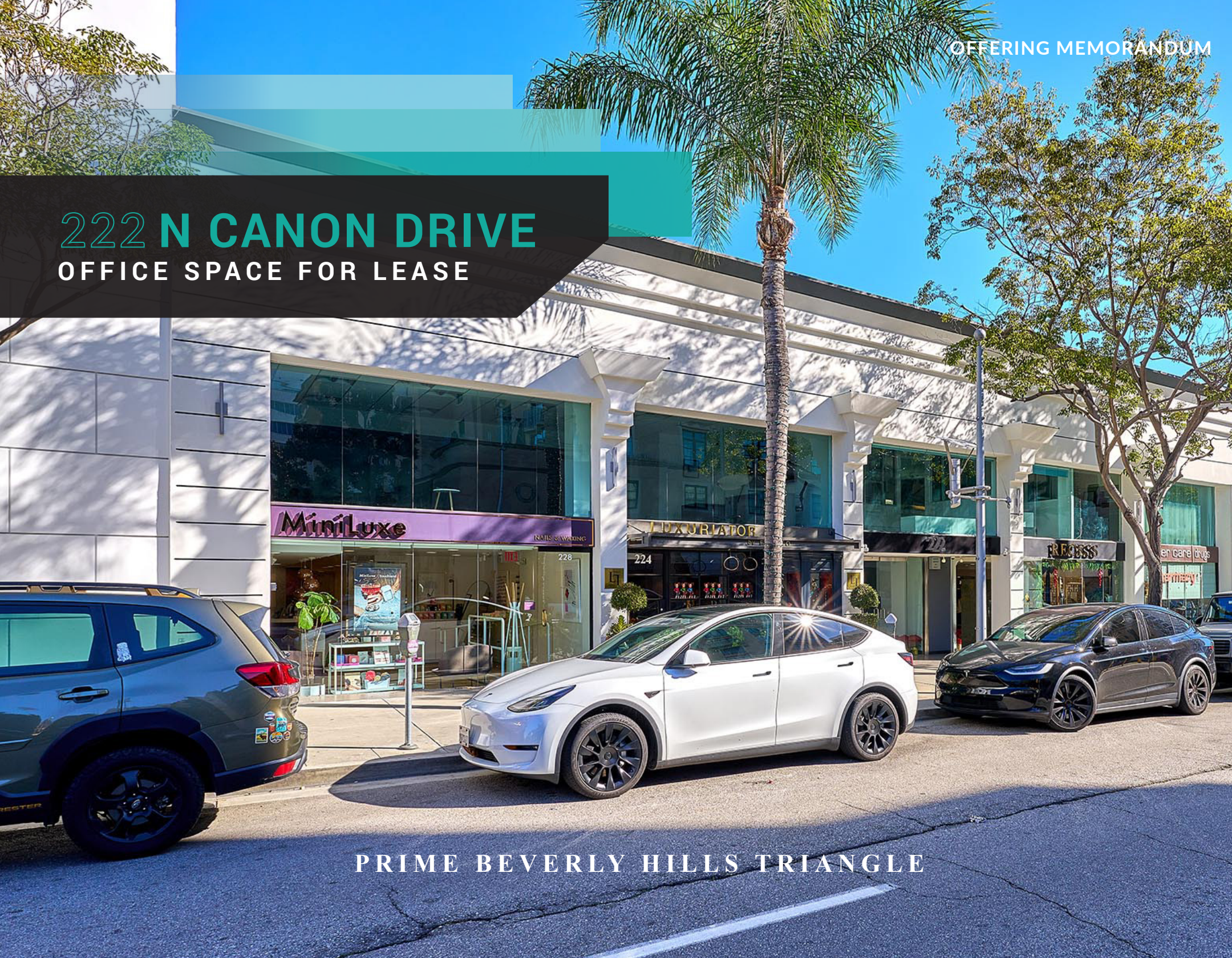


222 N CANON DRIVE

OFFICE SPACE FOR LEASE



PRIME BEVERLY HILLS TRIANGLE

OFFERING MEMORANDUM



CLAIRE CHEONG LEE

REALTOR

714.679.3992

CLAIRE@VERITASKW.COM

@ClaireCheongLee

ClaireLee.Veritaskw.com

DRE# 02172372

JAYDEN MO

REALTOR

424.359.9145

MOJAYDEN9@GMAIL.COM

DRE# 02207272

222 N CANON DRIVE

PRIME BEVERLY HILLS TRIANGLE



222 N CANON DR
BEVERLY HILLS, CA 90210

CONFIDENTIALITY AND DISCLAIMER

The information contained in the following Marketing Brochure is proprietary and strictly confidential. It is intended to be reviewed only by the party receiving it from THE VERITAS GROUP, and should not be made available to any other person or entity without the written consent of THE VERITAS GROUP. This Marketing Brochure has been prepared to provide summary, unverified information to prospective purchasers, and to establish only a preliminary level of interest in the due diligence investigation. THE VERITAS GROUP has not made any investigation, and makes no warranty or representation, with respect to the income or expenses for the subject property, the future projected financial performance of the property, the size and square footage of the property and improvements, the presence or absence of contaminating substance, PCB's or asbestos, the compliance with the state and Federal regulation, the physical condition of the improvements thereon, or the financial condition or business prospects of any tenant, or any tenant's plans or intentions to continue its occupancy of the subject property. The information contained in this Marketing Brochure has been obtained from sources we believe to be reliable; however, THE VERITAS GROUP has not verified, and will not verify, any of the information contained herein, nor has THE VERITAS GROUP conducted any investigation regarding these matters and makes no warranty or representation whatsoever regarding the accuracy or completeness of the information provided. All potential buyers must take appropriate measures to verify all of the information set forth herein.

222 N CANON DR
BEVERLY HILLS, CA 90210

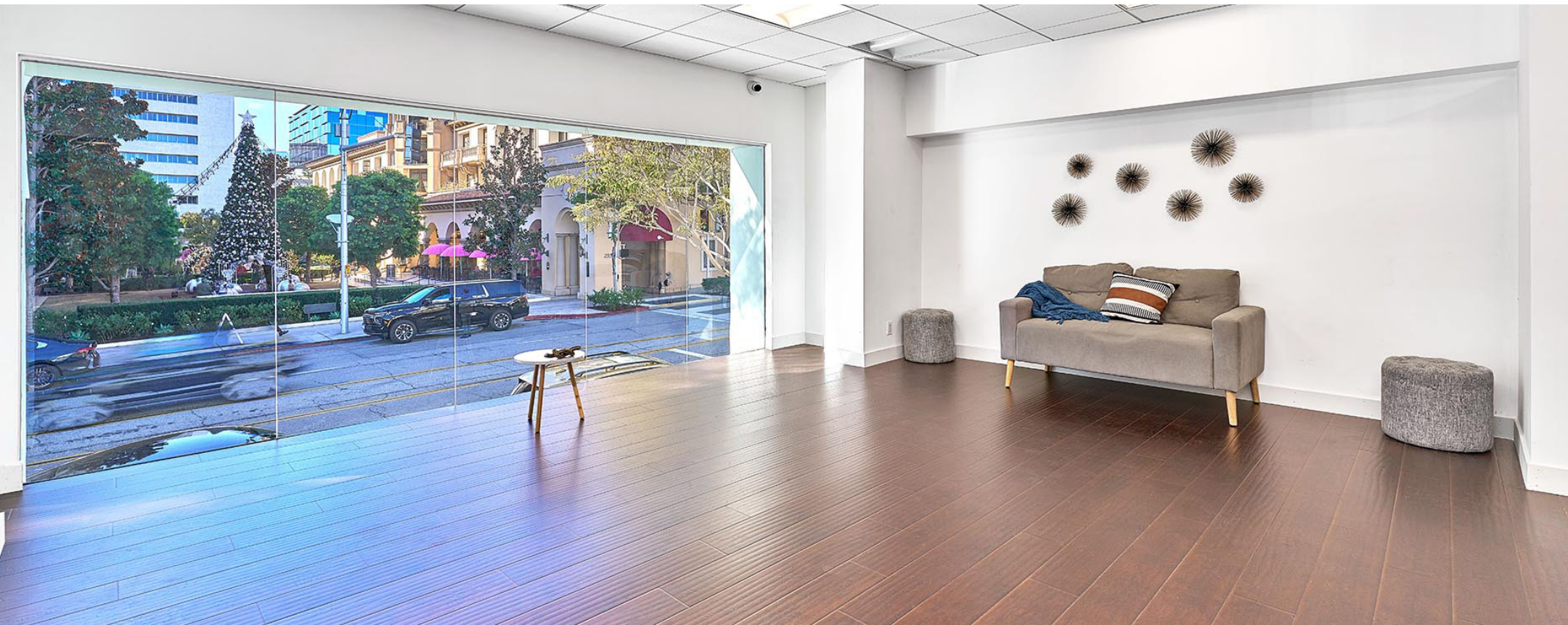
THE OFFERING

An exceptional opportunity to lease a rare, open-floor workplace with a full glass-front office at one of Beverly Hills' most coveted addresses.

Located at 222 N Canon Drive, this light-filled office offers a modern, professional setting with prime frontage directly facing Canon Drive—an increasingly sought-after corridor known for its energy, convenience, and prestige.

Situated in the heart of the Beverly Hills Triangle, just north of Wilshire Boulevard and directly across from the Montage Beverly Hills Hotel, the property is surrounded by world-class amenities. Enjoy walking distance to renowned cafes, fitness studios, luxury shopping, and top dining destinations along trendy Canon Drive, creating an ideal work environment for both employees and clients.

This is a beautiful and rare offering that combines visibility, walkability, and an unbeatable Beverly Hills location—perfect for professionals seeking a refined office presence in a vibrant, upscale setting.



222 N CANON DR
BEVERLY HILLS, CA 90210



SANTA MONICA BLVD

BRIGHTON WAY

DAYTON WAY

WILSHIRE BLVD

PRIME BEVERLYHILLS TRIANGLE



SUITE # 201

1,550 RSF

RENTAL RATE: NEGOTIABLE



PARKING

TANDEM \$300/MO

SUBJECT
PROPERTY

PRADA

L
LOUIS VUITTON

CHANEL

Cartier



ALLSAINTS

TOM FORD

JIMMY CHOO



BVLGARI

222 N CANON DR
BEVERLY HILLS, CA 90210

WALK SCORE

222 N Canon Dr. Beverly Hills

Commute to Downtown Beverly Hills

 1 min  7min  2min  8min

Walk Score
97

Walker's Paradise
Daily errands do not
require a car.

Transit Score
58

Good Transit
Many nearby public
transportation options.

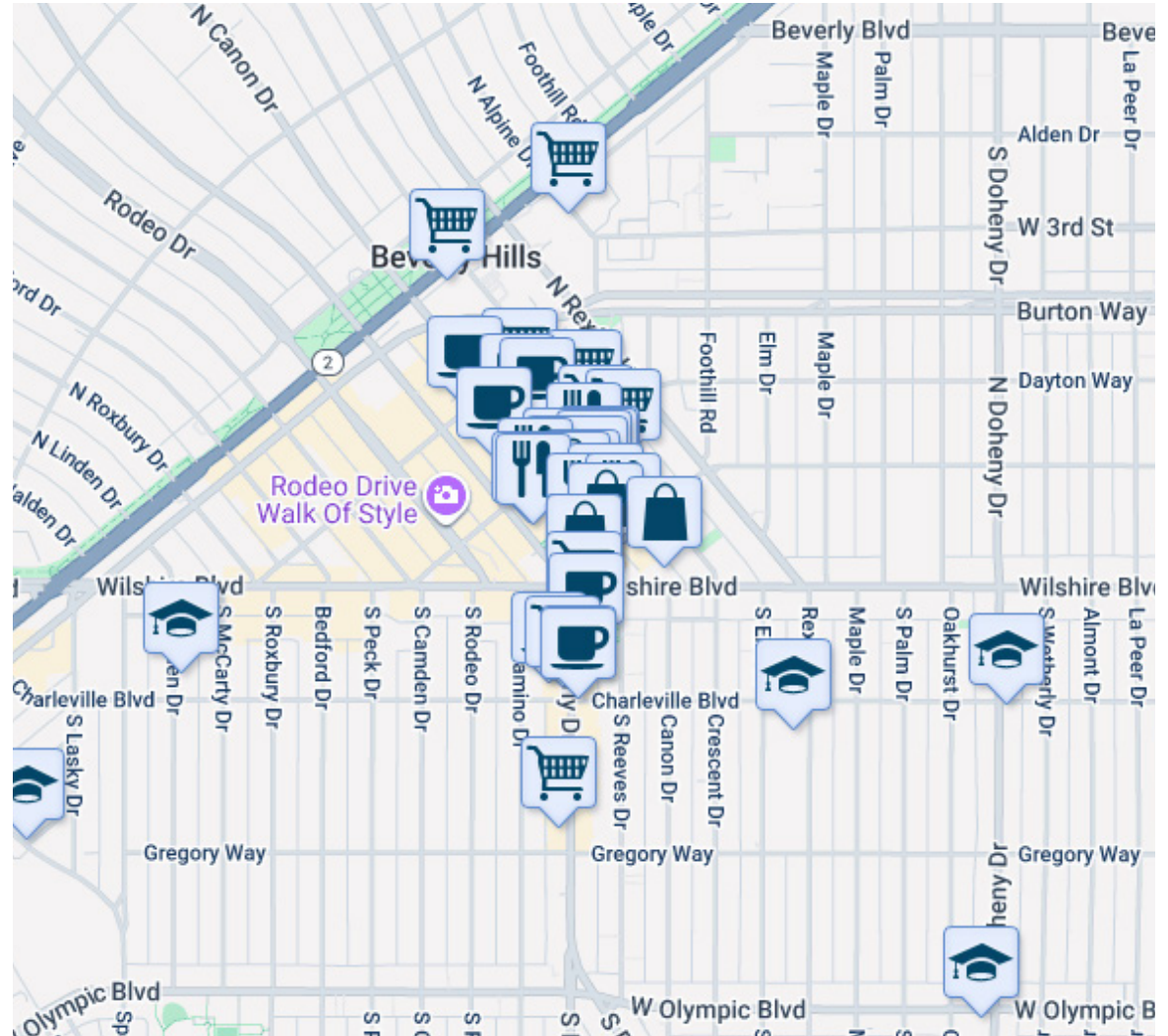
Bike Score
60

Bikeable
Some bike infrastructure.

About this Location

222 North Canon Drive has a Walk Score of 97 out of 100. This location is a Walker's Paradise so daily errands do not require a car.

This location is in Beverly Hills. Nearby parks include Beverly Gardens Park, Oakhurst Park and Electric Fountain.

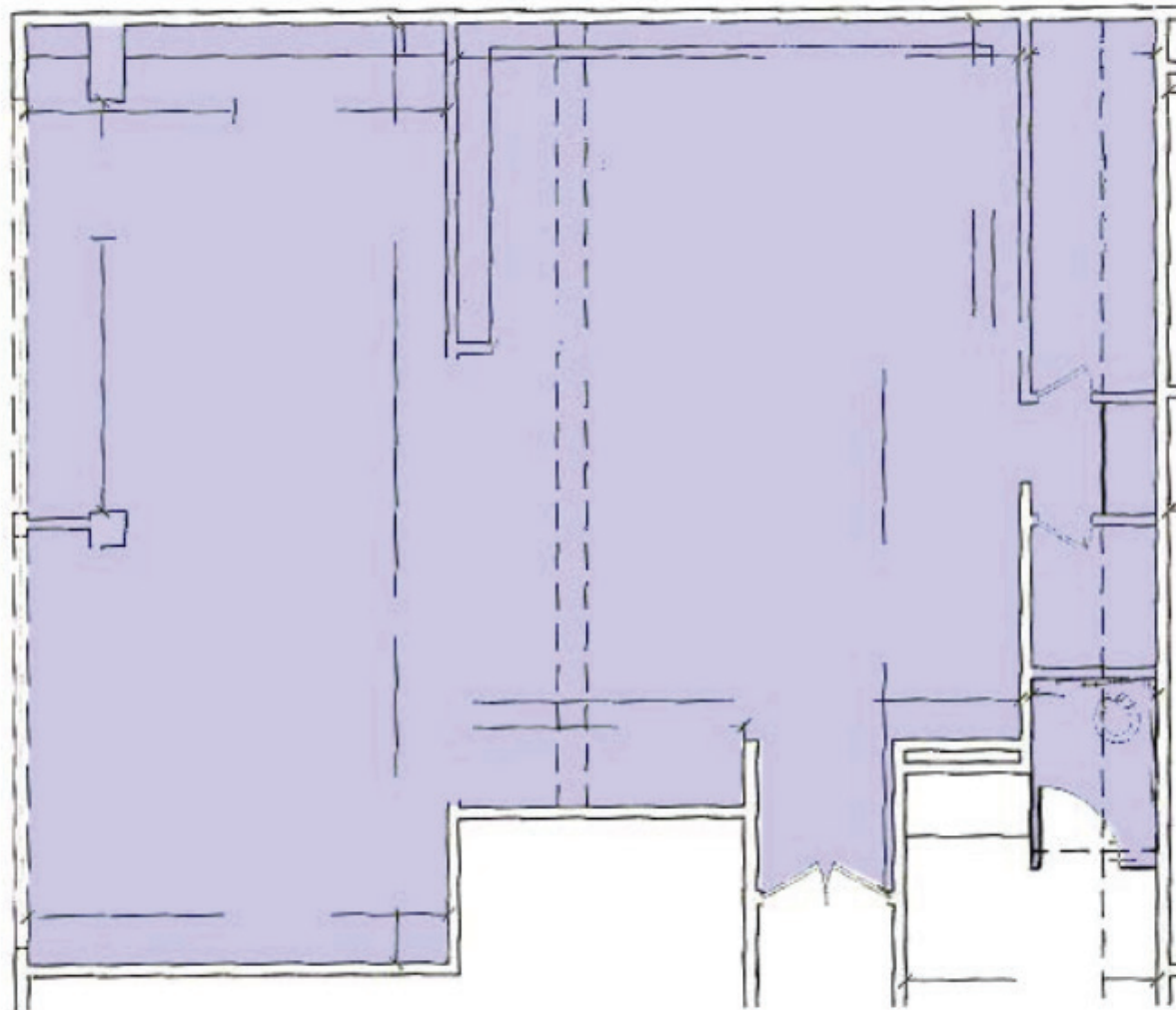


Walk Score® 

222 N CANON DR
BEVERLY HILLS, CA 90210

FLOOR PLAN

SUITE 201
±1,550 RSF



PROPERTY IMAGES / OUTSIDE



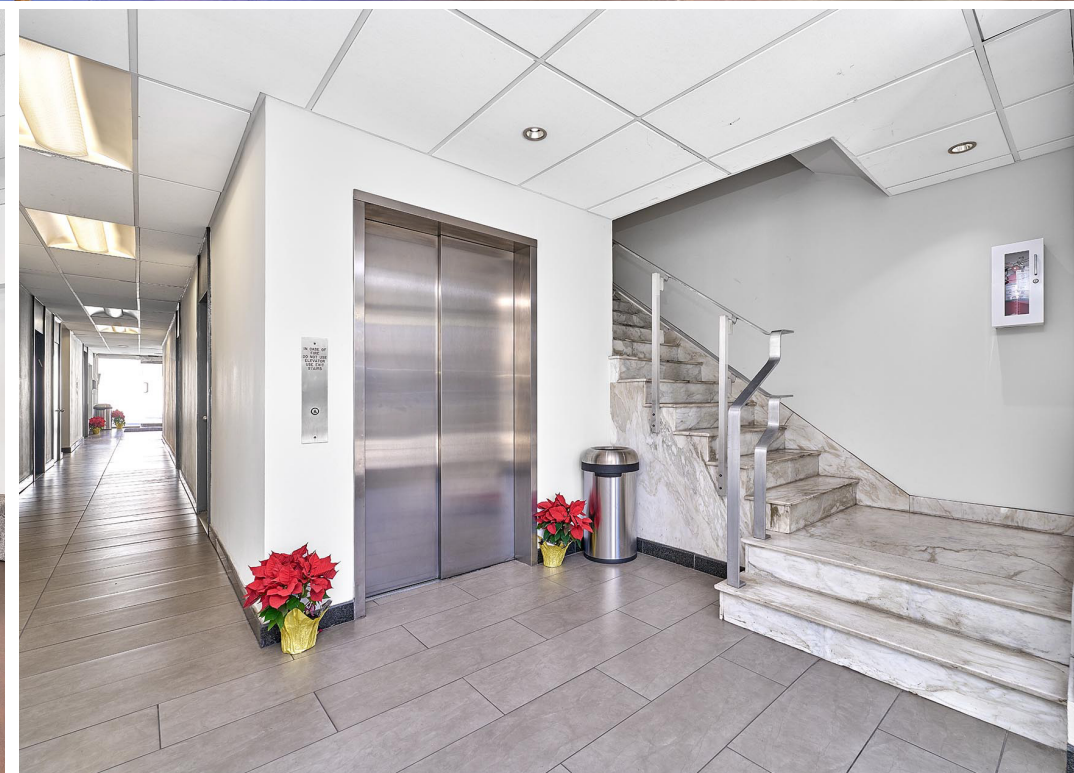
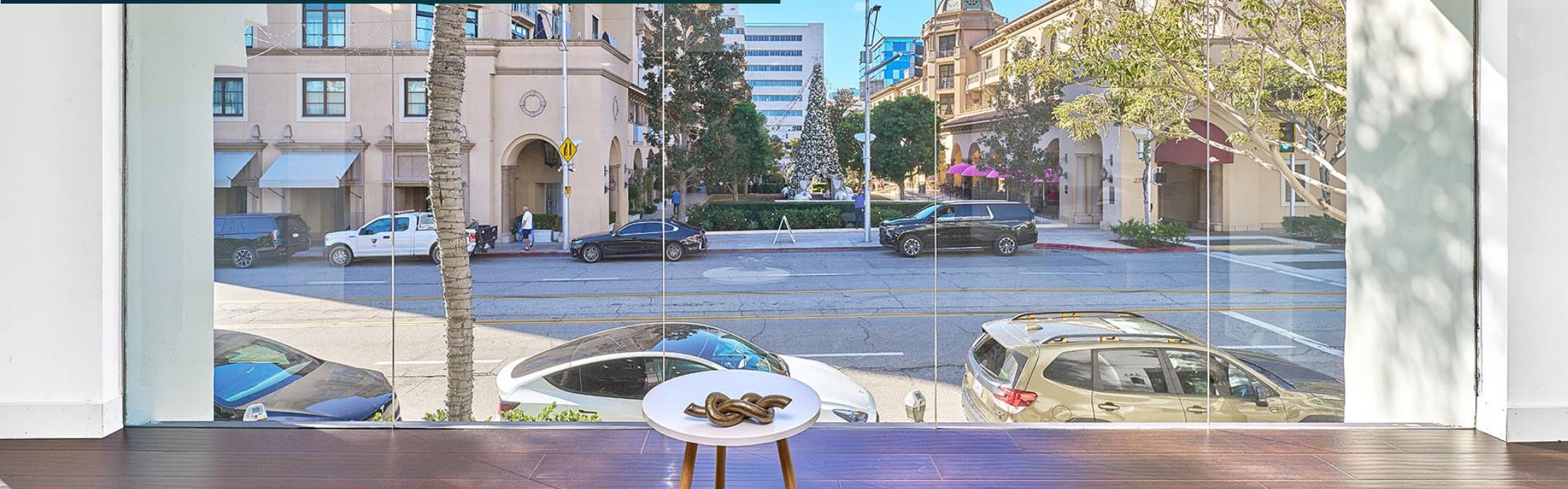
PROPERTY IMAGES / REAR PARKING



PROPERTY IMAGES / INTERIOR



PROPERTY IMAGES / INTERIOR





The
Veritas Group



CLAIRE CHEONG LEE

REALTOR

714.679.3992

CLAIRE@VERITASKW.COM

@ClaireCheongLee

ClaireLee.Veritaskw.com

DRE# 02172372



JAYDEN MO

REALTOR

424.359.9145

MOJAYDEN9@GMAIL.COM

DRE# 02207272