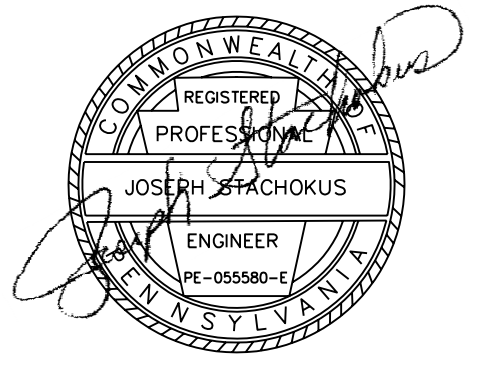




SM Design Group, LLC
CONSULTING ENGINEERS
275 Mundy Street
Suite 101
Wilkes-Barre, PA 18702
Tel: 570-970-0480
Fax: 570-970-0483
smdg@smdesigngroup.com

OWNERSHIP AND USE OF DOCUMENTS
THESE DRAWINGS ARE INSTRUMENTS OF SERVICE AND SHALL REMAIN THE PROPERTY OF SM DESIGN GROUP, LLC WHETHER THE PROJECT FOR WHICH THEY ARE MADE IS EXECUTED OR NOT.
THESE DRAWINGS SHALL NOT BE USED BY ANYONE ON OTHER PROJECTS, FOR ADDITIONS TO THIS PROJECT BY OTHERS EXCEPT BY AGREEMENT IN WRITING AND WITH APPROPRIATE CONSENTATION TO SM DESIGN GROUP, LLC.
SUBMISSION OR DISTRIBUTION TO OFFICIAL REGULATORY AGENCIES OR FOR OTHER PURPOSES IN CONNECTION WITH THIS PROJECT IS NOT TO BE CONSIDERED AS PUBLICATION IN DEGRADATION OF SM DESIGN GROUP, LLC.
THESE REVISIONS HAVE BEEN ISSUED FOR THE CONVENIENCE OF THE OWNER AND CONTRACTOR. NO CHANGES, ALTERATIONS, ADDITIONS OR DELETIONS MAY BE MADE TO THESE DOCUMENTS EXCEPT BY THE ENGINEER.

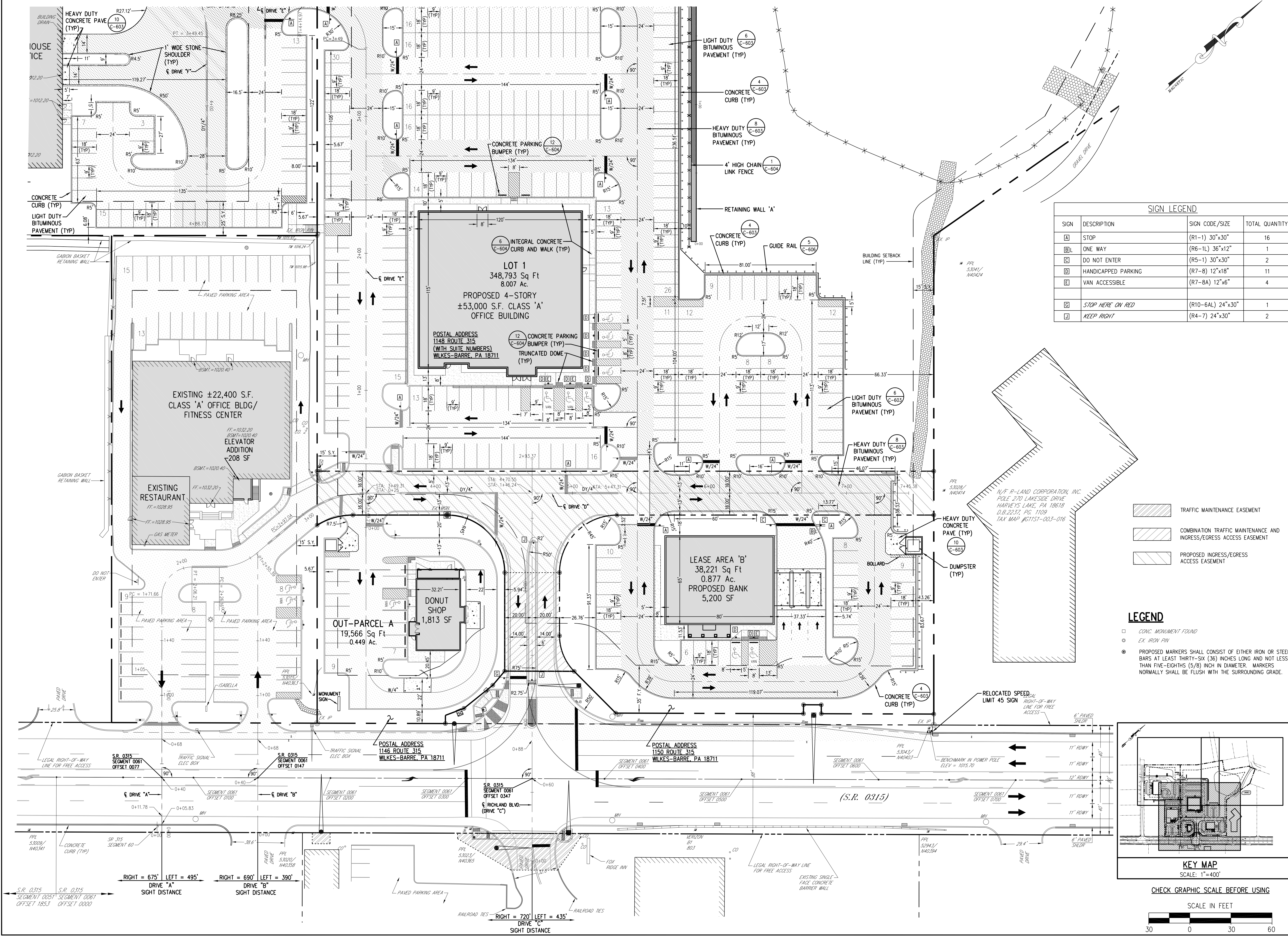
**PRELIMINARY MAJOR LAND DEVELOPMENT
PLANS FOR RICHLAND 315
FORMERLY RICHLAND SOUTH - PHASE II**
RICHLAND REAL ESTATE INVESTMENTS, LTD
STATE ROUTE 315
PLAINS TOWNSHIP, LUZERNE COUNTY
PENNSYLVANIA



NO.	DATE	REVISIONS

DRAWN BY: RBM SCALE: 1"=30'
CHECKED BY: JS DATE: 03/03/15
JOB NO: 10079.04

DRAWING TITLE:
SITE PLAN
DRAWING NO:
C-201



SIGN LEGEND

SIGN	DESCRIPTION	SIGN CODE/SIZE	TOTAL QUANTITY
A	STOP	(R1-1) 30"x30"	16
B	ONE WAY	(R6-1L) 36"x12"	1
C	DO NOT ENTER	(R5-1) 30"x30"	2
D	HANDICAPPED PARKING	(R7-B) 12"x18"	11
E	VAN ACCESSIBLE	(R7-BA) 12"x6"	4
G	STOP HERE ON RED	(R10-6AL) 24"x30"	1
H	KEEP RIGHT	(R4-7) 24"x30"	2

- LEGEND**
- TRAFFIC MAINTENANCE EASEMENT
 - COMBINATION TRAFFIC MAINTENANCE AND INGRESS/EGRESS ACCESS EASEMENT
 - PROPOSED INGRESS/EGRESS ACCESS EASEMENT

- LEGEND**
- CONC. MONUMENT FOUND
 - EX. IRON PIN
 - PROPOSED MARKERS SHALL CONSIST OF EITHER IRON OR STEEL BARS AT LEAST THIRTY-SIX (36) INCHES LONG AND NOT LESS THAN FIVE-EIGHTHS (5/8) INCH IN DIAMETER. MARKERS NORMALLY SHALL BE FLUSH WITH THE SURROUNDING GRADE.

