



## ±2,200 SF OFFICE FOR SUBLEASE

**Lease Rate:**  
**\$7.45/SF NNN**

157 Commons Way  
Greenville, SC 29611

- Sublease - Expires January 2026
- 4 Offices
- 2 Restrooms
- Large conference room
- Open collaboration space on the second floor
- Ample Free Parking



**LEE & ASSOCIATES**  
COMMERCIAL REAL ESTATE SERVICES

**Darath Mackie**  
Vice President  
dmackie@lee-associates.com

**864.704.1040**  
LeeGreenville.com



**DOWNTOWN  
ACCESS**  
CLOSE PROXIMITY  
TO DOWNTOWN



**LOCATION**  
SURROUNDED BY  
MULTIPLE RESTAU-  
RANTS, SHOPPING  
AND PERSONAL  
SERVICES

# PROPERTY OVERVIEW

|                    |                                    |
|--------------------|------------------------------------|
| PROPERTY NAME      | White Horse Road Professional Park |
| TYPE               | Office Condo                       |
| TOTAL BUILDING SF  | Condo Unit is ±2,200 SF            |
| TOTAL AVAILABLE SF | ±2,200 SF                          |
| TAX MAP #          | 237040102600                       |
| COUNTY             | Greenville                         |
| CITY LIMITS        | No                                 |
| ZONING             | C-2                                |
| YEAR BUILT         | 2005                               |
| CONSTRUCTION TYPE  | Masonry                            |

|                   |                        |
|-------------------|------------------------|
| ROOF              | Shingle                |
| PARKING           | Ample On Site And Free |
| RESTROOMS         | Yes                    |
| SUBMARKET         | West Side Greenville   |
| NUMBER OF OFFICES | 4                      |
| CONFERENCE ROOM   | Yes                    |
| BREAK ROOM        | Yes                    |
| RECEPTION AREA    | Yes                    |
| SHARED SPACE      | No                     |

## PROPERTY SUMMARY

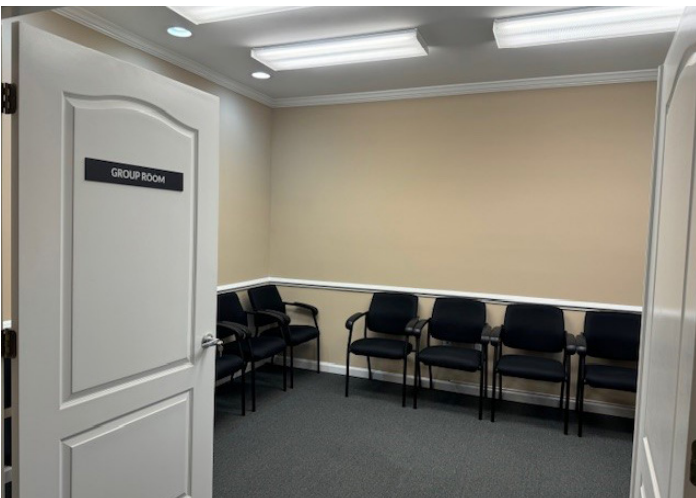
The property at 157 Commons Way, Greenville, SC 29611, is a ±2,200 square foot office space available for sublease. The sublease expires in January 2026. The space features four individual offices, two restrooms, a large conference room, and an open collaboration space on the second floor. The building provides ample free parking. The lease rate is \$7.45 per square foot on a triple net (NNN) basis.

Located in the White Horse Road Professional Park, the office is constructed with masonry and has a shingle roof. It falls under the C-2 zoning category and is situated in the West Side Greenville submarket. The property is not within city limits but is in close proximity to downtown Greenville, surrounded by various restaurants, shopping centers, and personal services.

The office building was constructed in 2005 and offers a break room and a reception area. The office condo is part of a professional park that includes ample on-site and free parking for tenants and visitors.



# PROPERTY PHOTOS



# LOCATION OVERVIEW

**Bank of  
TRAVELERS REST**  
SINCE 1946  
Member FDIC

  
**Applebee's**  
GRILL + BAR

**Walmart** 

  
**ALDI**



201 W. McBee Ave, Suite 100, Greenville, SC 29601  
320 E. Main Street, Suite 430, Spartanburg, SC 29302  
[LeeGreenville.com](http://LeeGreenville.com) | 864.704.1040



**LEE & ASSOCIATES**  
COMMERCIAL REAL ESTATE SERVICES

**864.704.1040**  
**LeeGreenville.com**

**GREENVILLE OFFICE**  
201 W. McBee Ave, Suite 400  
Greenville, SC 29601

**SPARTANBURG OFFICE**  
320 E. Main Street, Suite 430  
Spartanburg, SC 29302

All information furnished regarding the properties and information in this packet is from sources deemed reliable, but no warranty or representation is made to the accuracy thereof and same is submitted to errors, omissions, change of price, rental or other conditions prior to sale, lease or financing or withdrawal without notice. No liability of any kind is to be imposed on the broker herein.

**LEARN MORE**  
**GIVE US A CALL**



**Darath Mackie**  
Vice President  
864.337.1543  
dmackie@lee-associates.com