



Property Highlights

- ±2,500 RSF Available with Building Signage on Two Sides
- High Visibility Location
- Outparcel of Target-Anchored Ohlone Shopping Center
- Excellent Frontage on Ohlone Pkwy
- 4/1000 SF Parking
- Regional Destination - Anchored Shopping Center
- Available January 1, 2021

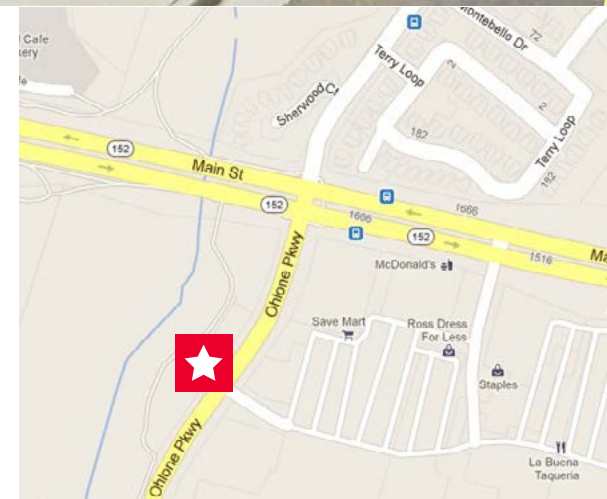
Lease Rate

- \$1.50 PSF + NNN (\$0.50±)

Reuben Helick
Managing Director
+1 831 647 2109
reuben.helick@cushwake.com
LIC #01171272

Nick Greenup
Associate
+1 831 647 2106
nicholas.greenup@cushwake.com
LIC #02143358

Doud Arcade Building, Suite #202
South Ocean Avenue
Carmel-by-the-Sea, CA 93921
main +1 831 375 8000
cushmanwakefield.com



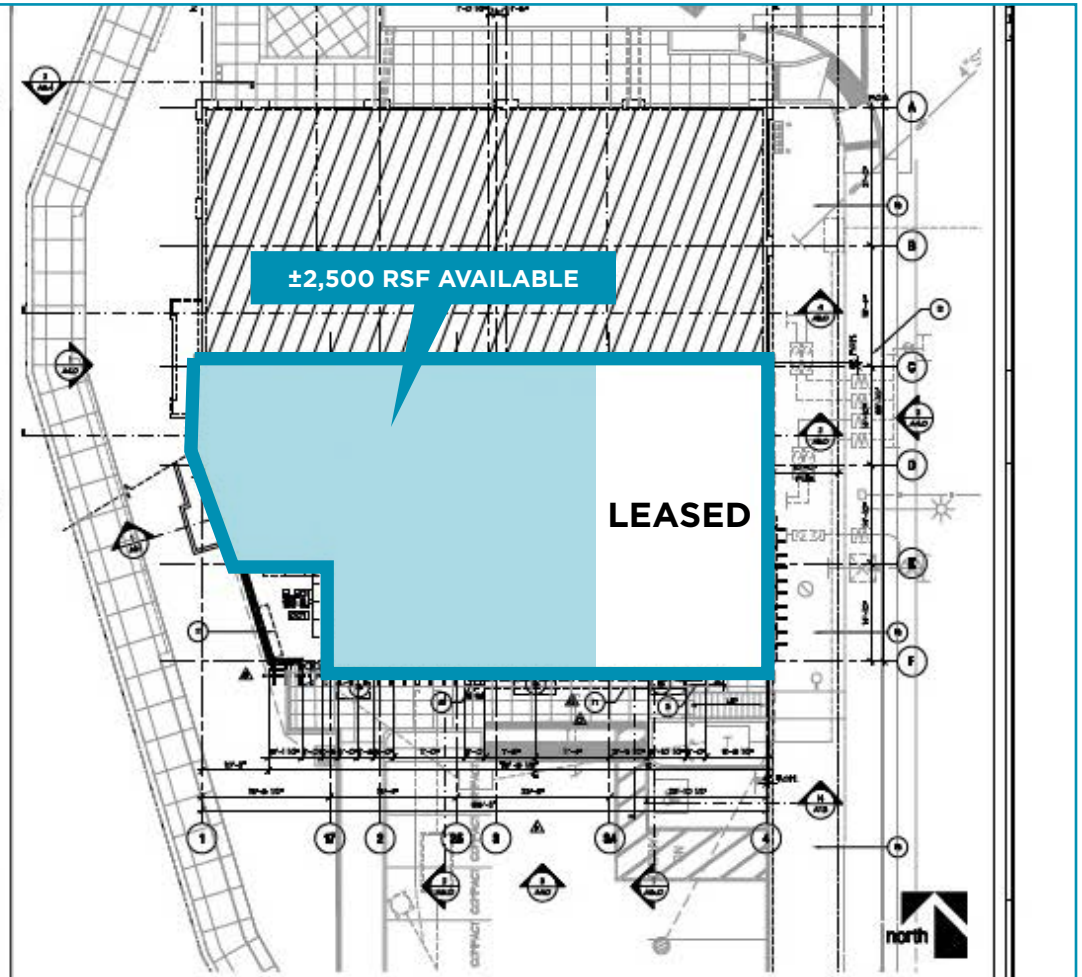
[View Site Specific COVID-19 Prevention Plan](#)

Site Plan

Upper Level



Lower Level

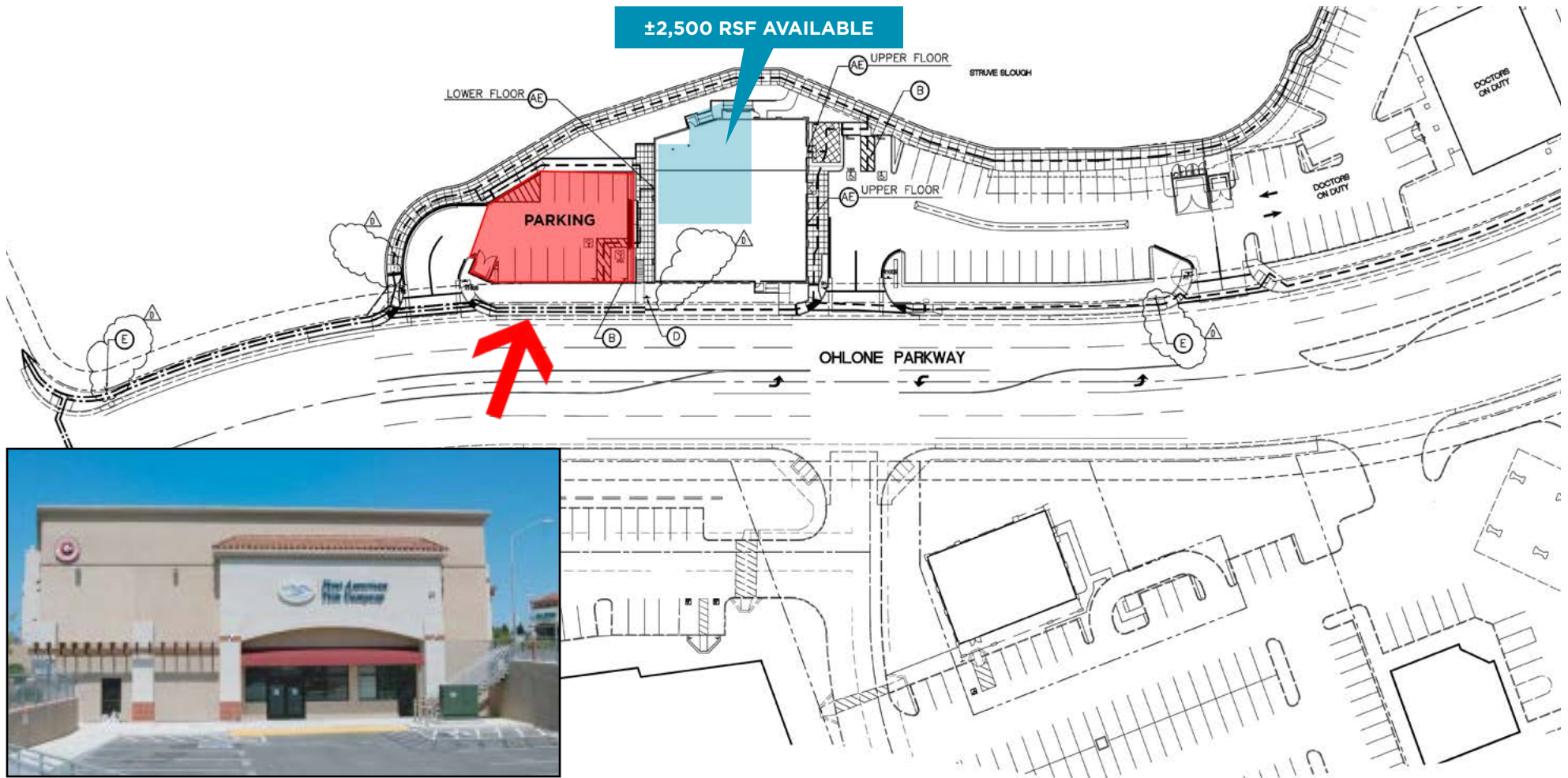


Reuben Helick
Managing Director
+1 831 647 2109
reuben.helick@cushwake.com
LIC #01171272

Nick Greenup
Associate
+1 831 647 2106
nicholas.greenup@cushwake.com
LIC #02143358

Doud Arcade Building, Suite #202
South Ocean Avenue
Carmel-by-the-Sea, CA 93921
main +1 831 375 8000
cushmanwakefield.com

Site Map

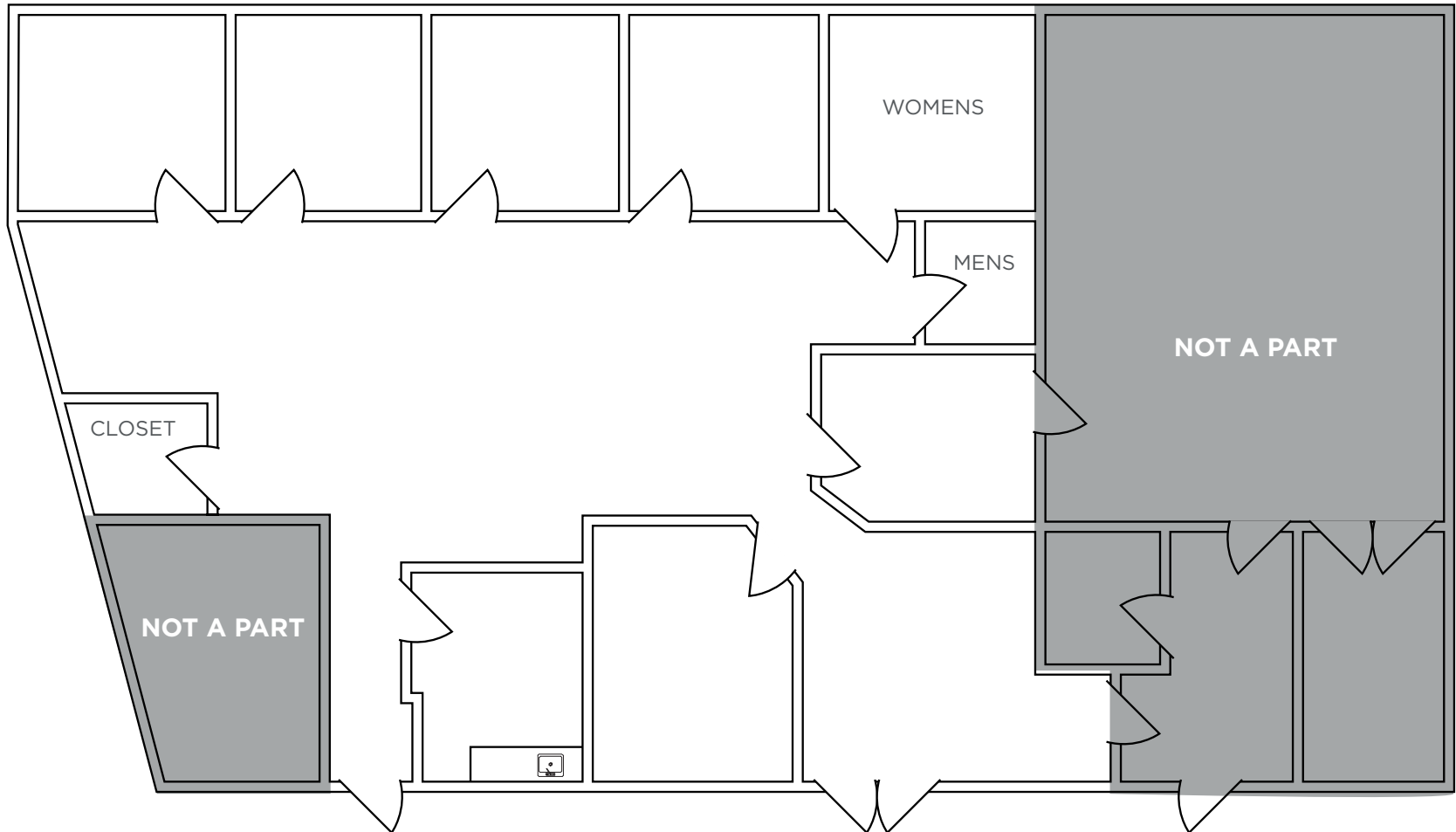


Reuben Helick
Managing Director
+1 831 647 2109
reuben.helick@cushwake.com
LIC #01171272

Nick Greenup
Associate
+1 831 647 2106
nicholas.greenup@cushwake.com
LIC #02143358

Doud Arcade Building, Suite #202
South Ocean Avenue
Carmel-by-the-Sea, CA 93921
main +1 831 375 8000
cushmanwakefield.com

Floor Plan

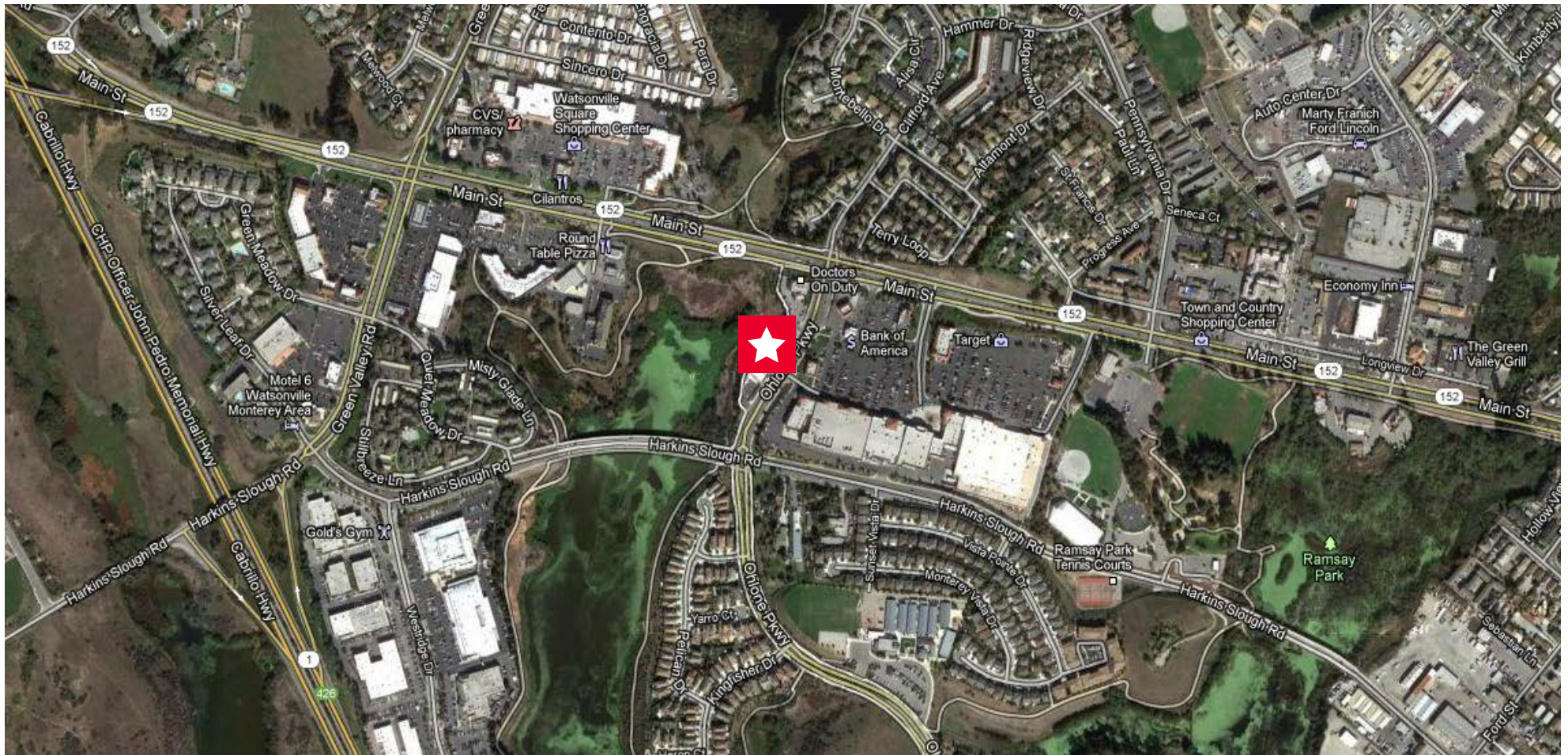


Reuben Helick
Managing Director
+1 831 647 2109
reuben.helick@cushwake.com
LIC #01171272

Nick Greenup
Associate
+1 831 647 2106
nicholas.greenup@cushwake.com
LIC #02143358

Doud Arcade Building, Suite #202
South Ocean Avenue
Carmel-by-the-Sea, CA 93921
main +1 831 375 8000
cushmanwakefield.com

Aerial - Surrounding Neighborhood

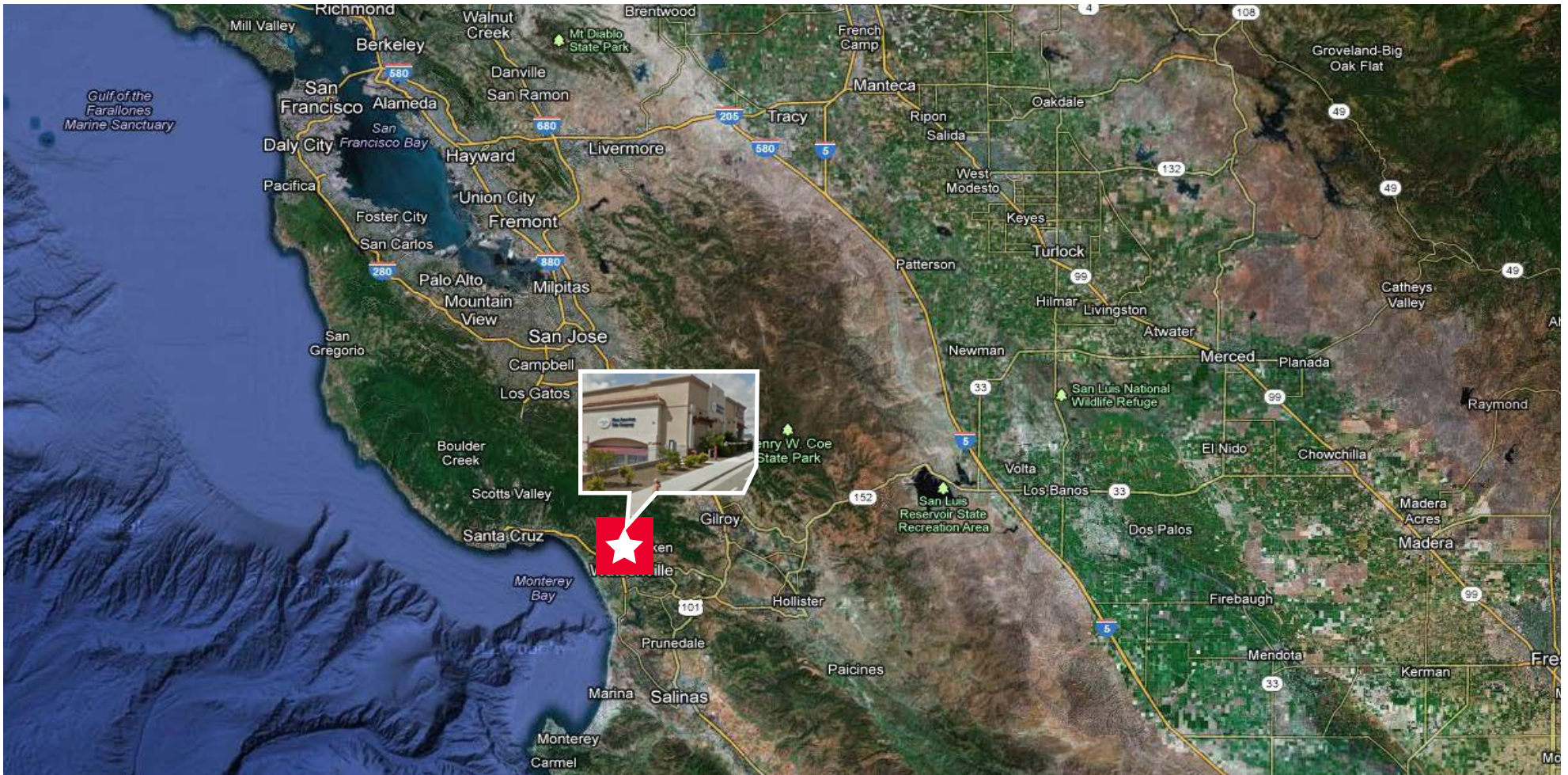


Reuben Helick
Managing Director
+1 831 647 2109
reuben.helick@cushwake.com
LIC #01171272

Nick Greenup
Associate
+1 831 647 2106
nicholas.greenup@cushwake.com
LIC #02143358

Doud Arcade Building, Suite #202
South Ocean Avenue
Carmel-by-the-Sea, CA 93921
main +1 831 375 8000
cushmanwakefield.com

Aerial - Regional



Reuben Helick
Managing Director
+1 831 647 2109
reuben.helick@cushwake.com
LIC #01171272

Nick Greenup
Associate
+1 831 647 2106
nicholas.greenup@cushwake.com
LIC #02143358

Doud Arcade Building, Suite #202
South Ocean Avenue
Carmel-by-the-Sea, CA 93921
main +1 831 375 8000
cushmanwakefield.com