

3020 High Ridge Road

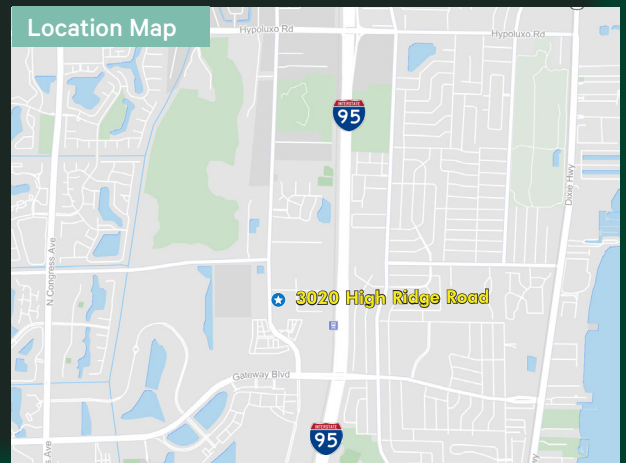
Boynton Beach, FL 33426

±7,630 SF to ±11,096 SF OFFICE/WAREHOUSE/SHOWROOM FOR LEASE



PROPERTY HIGHLIGHTS

- + Available Space Options:
 - Suite 300 - ±11,069 SF Available (1st Floor) - ±9,096 SF (2nd Floor) ±2,000 SF
 - Suite 800 - ±7,630 SF Available
- + Zoning M1
- + 22' Clear Height
- + 100% Air Conditioned
- + Heavy Power
- + Drive in Loading
- + Ample Parking
- + Oversized Loading Doors
- + Year Built - 1987
- + CBS Construction
- + Fully Fire Sprinklered
- + Excellent Location with Quick Access to I-95 and Amenities



Contact Us

ROBERT SMITH

Executive Vice President

+1 561 707 5558

robert.c.smith@cbre.com

KIRK NELSON

Executive Vice President

+1 561 716 9936

kirk.nelson@cbre.com

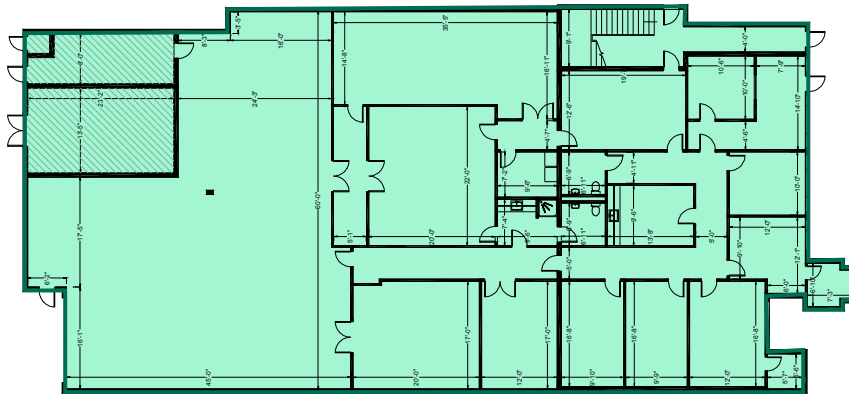
Asking Rental Rate: \$18.50 SF Modified Gross

±7,360 SF to ±11,096 SF OFFICE/WAREHOUSE/SHOWROOM
3020 High Ridge Road | Boynton Beach, FL

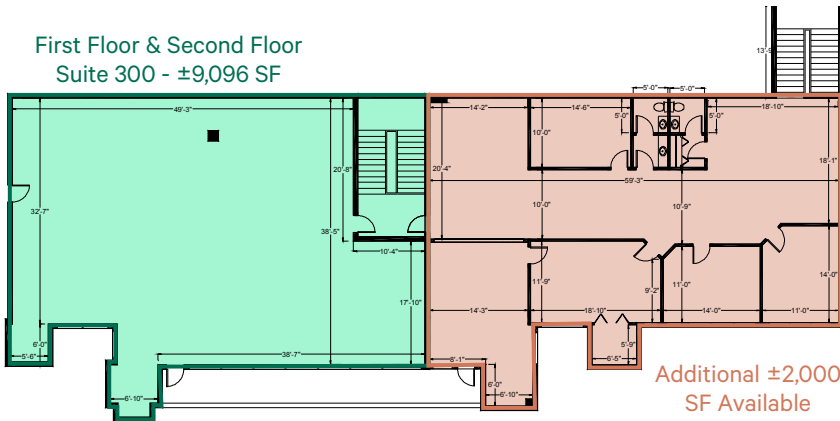
For Lease

Available Space Options

Suite 300	±11,096 SF Total 1st Floor - ±9,096 SF 2nd Floor - ±2,000 SF
Suite 800	1st Floor - ±7,360 SF

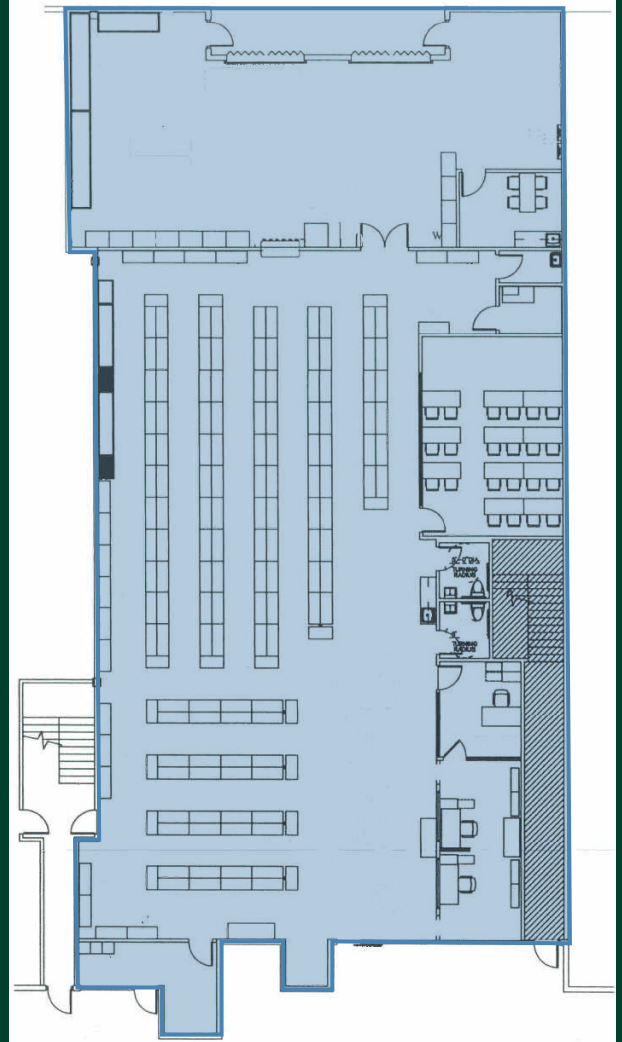


First Floor & Second Floor
Suite 300 - ±9,096 SF



Additional ±2,000
SF Available

Suite 800 - ±7,360 SF



Contact Us

ROBERT SMITH

Executive Vice President
+1 561 707 5558
robert.c.smith@cbre.com

KIRK NELSON

Executive Vice President
+1 561 716 9936
kirk.nelson@cbre.com

© 2025 CBRE, Inc. All rights reserved. This information has been obtained from sources believed reliable, but has not been verified for accuracy or completeness. You should conduct a careful, independent investigation of the property and verify all information. Any reliance on this information is solely at your own risk. CBRE and the CBRE logo are service marks of CBRE, Inc. All other marks displayed on this document are the property of their respective owners, and the use of such logos does not imply any affiliation with or endorsement of CBRE. Photos herein are the property of their respective owners. Use of these images without the express written consent of the owner is prohibited.