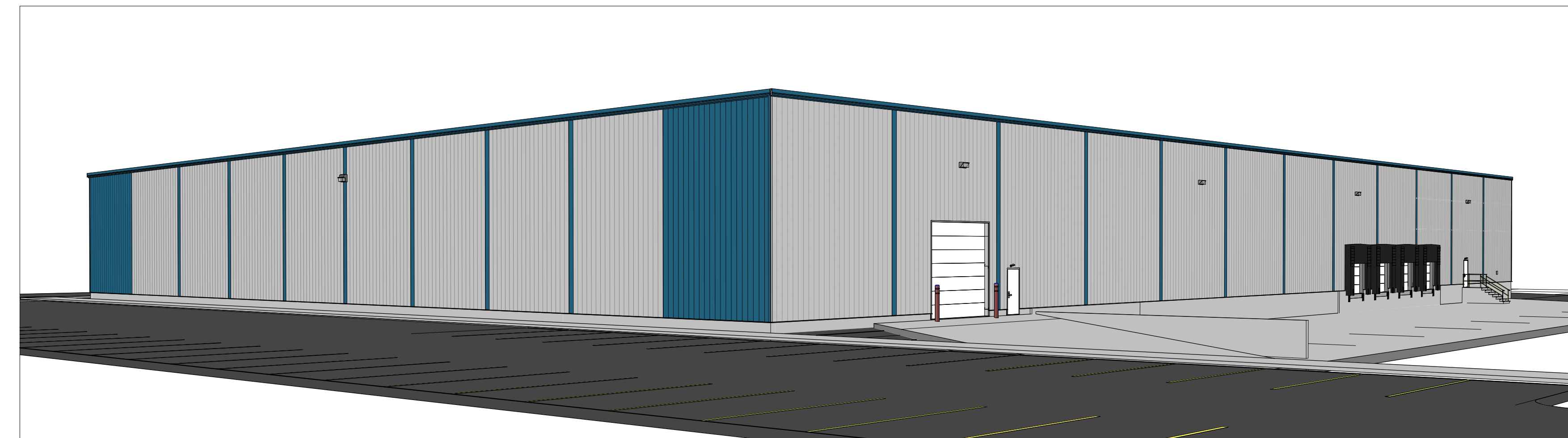
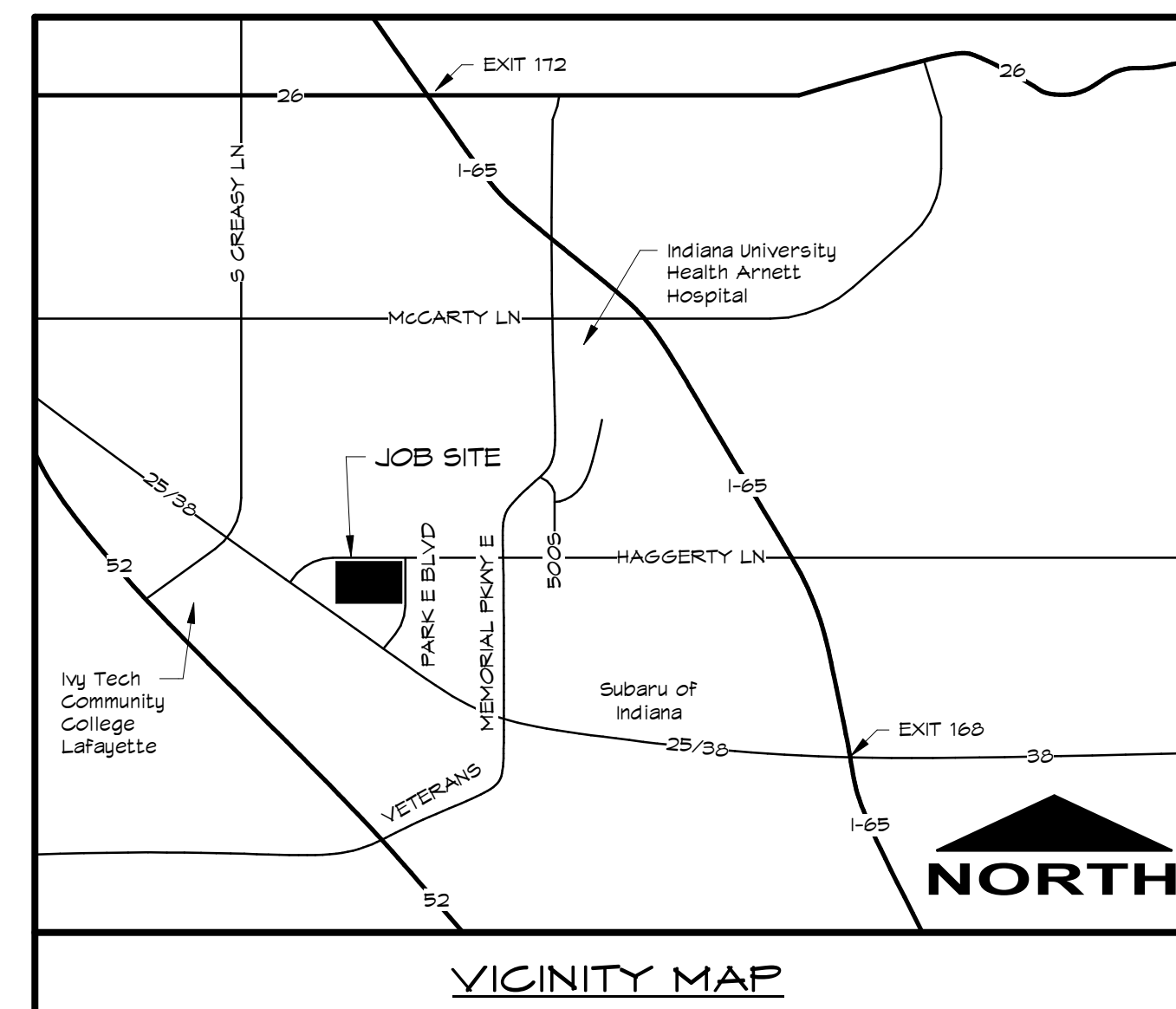




60,000 SF WAREHOUSE
FOR

HAGGERTY POINT FIVE

2760 PARK EAST BLVD, LAFAYETTE, INDIANA 47905



Picture Index (Click to go directly to photo)

[North Exterior View](#)

[East Exterior View](#)

[South Exterior View](#)

[West Exterior View](#)

[North Exterior View 2](#)

[NW Dock Exterior View](#)

[NE Dock Exterior View](#)

[Exterior Dock Sample Close-up](#)

[Electrical Supply Transformer](#)

[Fire Hydrant/Fire Department Connection-NE Corner](#)

[NW Interior Corner Looking in](#)

[Main Electrical Panel-NW Corner](#)

[North Side Dock Doors-West end/Interior](#)

[Restrooms-North Side](#)

[Restroom](#)

[Mop Sink \(Beside Restroom\)](#)

[Secondary Electrical Panel/Fire Alarm Panel- NE](#)

[Fire Alarm Panel](#)

[North Side Dock Doors-East end/Interior](#)

[NE Interior Corner Looking in](#)

[East Unit Heaters](#)

[Natural Gas Supply Line \(East end\)](#)

[Fiber Optics Supply \(SE Corner\)](#)

[SE Interior Corner Looking in](#)

[SW Interior Corner Looking in](#)

[West end Unit Heaters](#)

[Interior View of Dock Door Sample](#)

[Dock Leveler Control Sample](#)

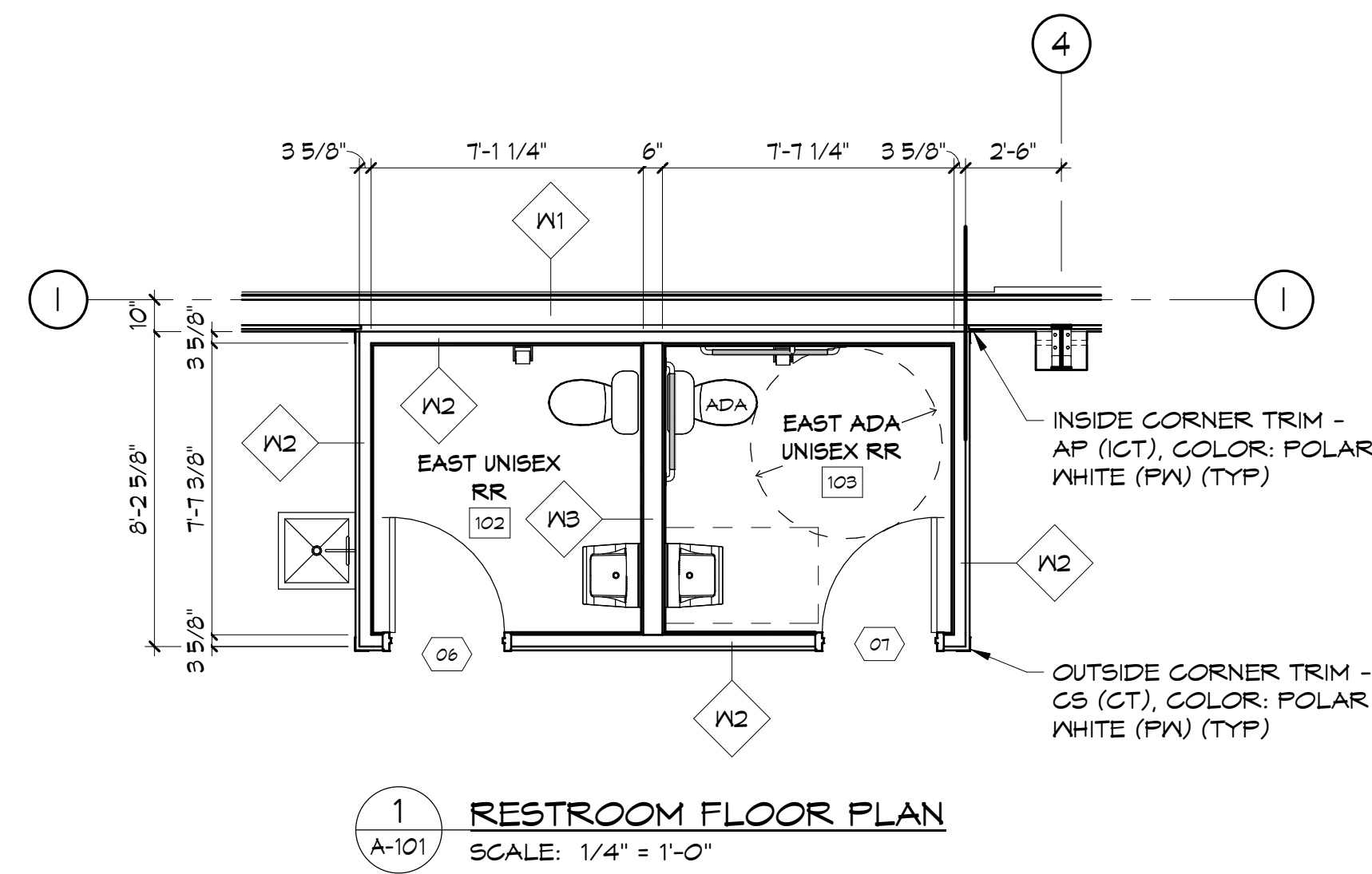
[Overhead Door Opener Sample](#)

[Unit Heater Close-up](#)

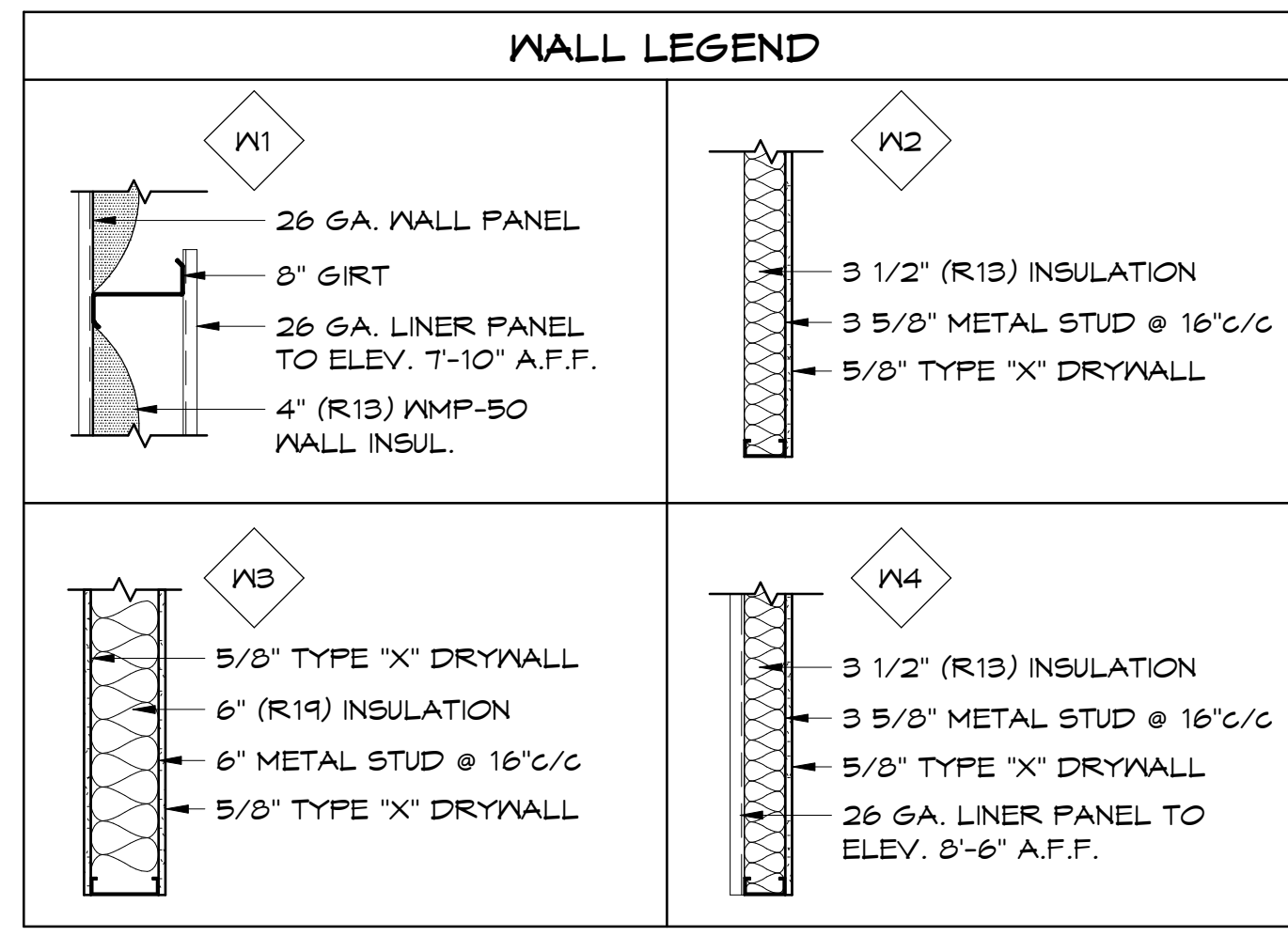
[Interior Fire Hose Connection Sample](#)

[High Bay Lighting Fixture Close-up](#)

[Exit Door Sample](#)



1 RESTROOM FLOOR PLAN
SCALE: 1/4" = 1'-0"



ROOM FINISH SCHEDULE															
NO.	ROOM NAME	FLOOR		WALLS						CEILING			REMARKS		
		FIN.	BASE	NORTH MTL.	FIN.	EAST MTL.	FIN.	SOUTH MTL.	FIN.	WEST MTL.	FIN.	MTL.		FIN.	HT.
101	WAREHOUSE	CON	BN	LP/ESS	N	LP/ESS	N	LP/ESS	N	LP/ESS	N	ESS	N	22'-0"	
102	EAST UNISEX RR	CON	VB	DN	P1/FRP	DN	P1/FRP	DN	P1/FRP	DN	P1/FRP	SGC	CT1	8'-0"	
103	EAST ADA UNISEX RR	CON	VB	DN	P1/FRP	DN	P1/FRP	DN	P1/FRP	DN	P1/FRP	SGC	CT1	8'-0"	

FLOOR FINISH		WALL MATERIAL		CEILING MATERIAL	
CON	CONCRETE SEALER	LP/ESS	6'-10" METAL LINER PANEL W/ EXPOSED STRUCT. STEEL ABOVE	ESS	EXPOSED STRUCT. STEEL
		DN	5/8" TYPE 'X' DRYWALL	SGC	2'x4' SUSPENDED CEILING GRID

FLOOR BASE		WALL FINISH		CEILING FINISH	
BN	1" BUMPER WALL	P1	PAINT, ONE COAT PRIMER, TWO COATS FINISH, COLOR: TBD	N	NONE
VB	4" VINYL COVE BASE, COLOR: TBD	FRP	4" HIGH FRP PANEL, COLOR: TBD	CT1	2' x 4' ICA-TILE MELT-AWAY CEILING TILE, COLOR: TBD
		N	NONE		

DOOR/WINDOW SCHEDULE									
NO.	SIZE W	SIZE H	DOOR/WINDOW TYPE	DOOR/WINDOW FINISH	FRAME TYPE	FRAME FINISH	HARDWARE LETTER	COMMENTS	ELEV.
01	3'-0"	7'-0"	IMTL	PRE	IHM	PRE1	H, LS, C, W & T		A
02	4'-0"	10'-0"	OHD2	PRE	OHD	PRE2	W & EO		B
03	4'-0"	10'-0"	OHD2	PRE	OHD	PRE2	W & EO		B
04	4'-0"	10'-0"	OHD2	PRE	OHD	PRE2	W & EO		B
05	4'-0"	10'-0"	OHD2	PRE	OHD	PRE2	W & EO		B
06	3'-0"	7'-0"	MTL	P1	IHM	P1	H, PS, & C		A
07	3'-0"	7'-0"	MTL	P1	IHM	P1	H, PS, & C		A
08	3'-0"	7'-0"	IMTL	PRE	IHM	PRE1	H, LS, C, W & T		A
09	14'-0"	14'-0"	OHD1	PRE	OHD	PRE2	W & EO		C
10	3'-0"	7'-0"	IMTL	PRE	IHM	PRE1	H, LS, C, W & T		A
11	3'-0"	7'-0"	IMTL	PRE	IHM	PRE1	H, LS, C, W & T		A

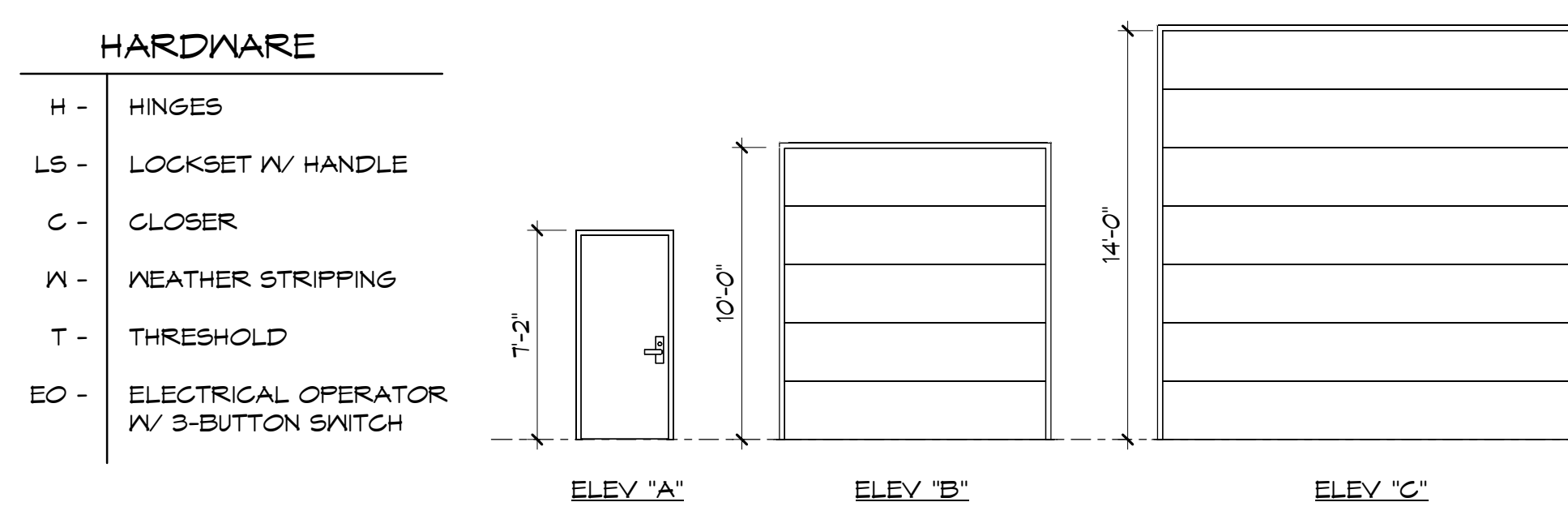
DOOR & FRAME TYPES AND FINISHES

DOOR TYPE
 IMTL - INSULATED CORE METAL DOOR, 18 ga. MIN., LITES PER SCHEDULE.
 MTL - HOLLOW METAL DOOR, 18 ga. MIN., LITES PER SCHEDULE OR ELEVATION #.
 OHD1 - INSULATED STEEL SECTIONAL OVERHEAD DOOR; CH1 3216; R-17.54
 OHD2 - INSULATED OVERHEAD SECTIONAL 'DOCK' DOOR; METAL GLADDING BOTH SIDES, R-13 MIN., WINDOWS PER SCHEDULE.

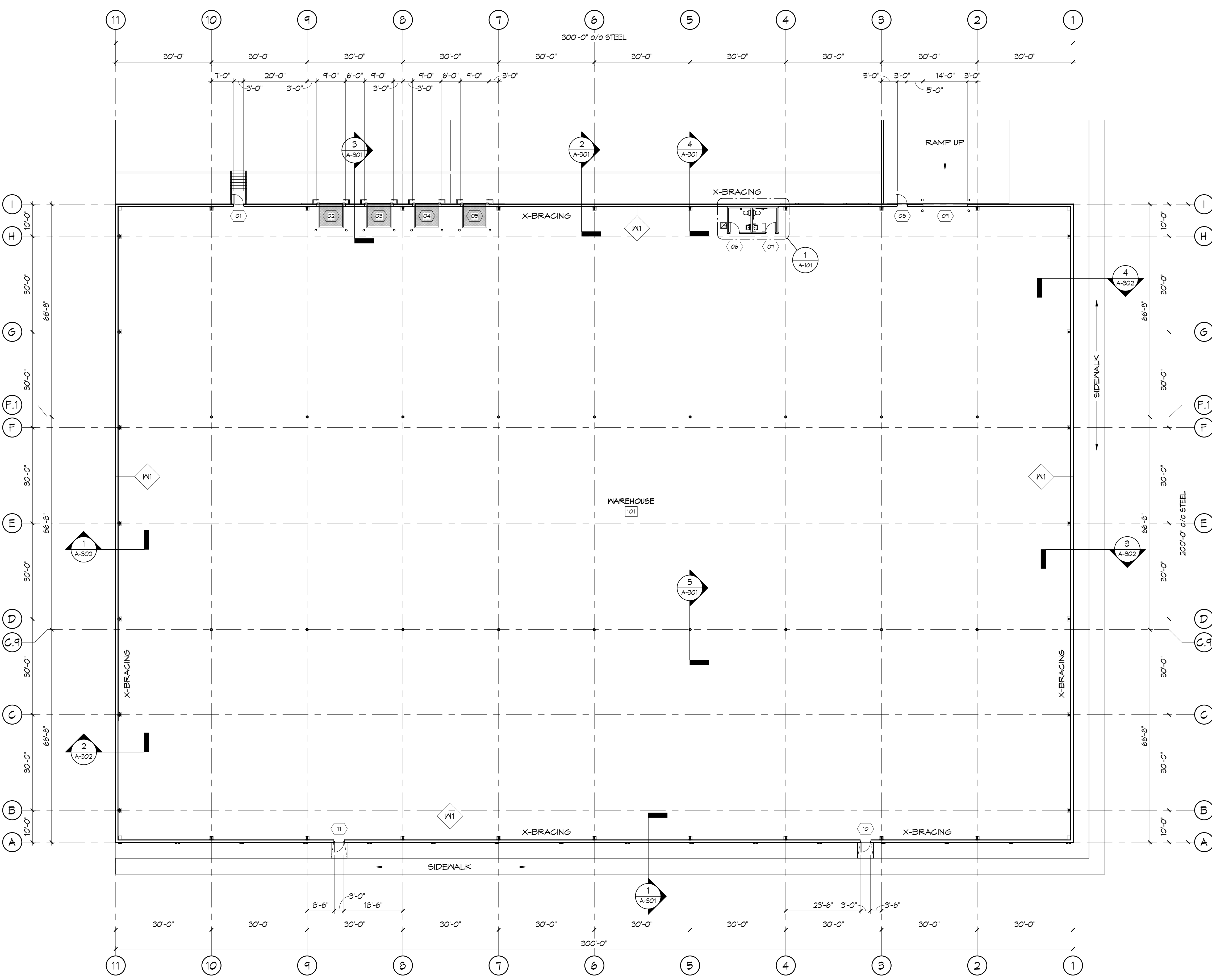
FRAME TYPES
 IHM - INSULATED HOLLOW METAL, 16 ga. MIN.
 HM - HOLLOW METAL, 16 ga. MIN.
 OHD - 'C'-CHANNEL PER PEMB PROVIDER & FACTORY O.H. SUPPLIED ANGLE MOUNTED TO WALL JAMB

DOOR FINISHES
 PRE - PREFINISHED PER DOOR/WINDOW MANUFACTURER, COLOR: WHITE
 P1 - PAINT ONE COAT PRIMER AND TWO COATS FINISH, SHEEN: SEMI-GLOSS, MANUFACTURER: SHERWIN-WILLIAMS (OR EQUAL)

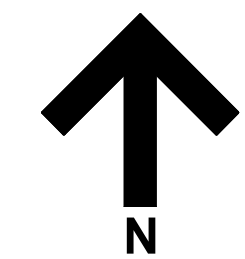
FRAME FINISHES
 PRE1 - PREFINISHED DOOR TRIM, COLOR: WHITE
 PRE2 - WRAP TRIM FOR ALL OH DOORS; COLOR: ROYAL BLUE
 P1 - PAINT ONE COAT PRIMER AND TWO COATS FINISH, SHEEN: SEMI-GLOSS, MANUFACTURER: SHERWIN-WILLIAMS (OR EQUAL)



- CONSTRUCTION GENERAL NOTES:**
- ALL CONSTRUCTION MATERIALS AND INSTALLATION MUST COMPLY WITH CODE REQUIREMENTS BY THE INDIANA ADMINISTRATIVE BUILDING COUNCIL, THE STATE BOARD OF HEALTH, AND THE STATE FIRE MARSHAL, AS SET FORTH BY THE FOLLOWING MOST CURRENT CODES:
 INTERNATIONAL BUILDING CODE WITH INDIANA AMENDMENTS
 INDIANA ENERGY CONSERVATION CODE
 UNIFORM PLUMBING CODE WITH INDIANA AMENDMENTS
 UNIFORM MECHANICAL CODE WITH INDIANA AMENDMENTS
 NATIONAL ELECTRICAL CODE WITH INDIANA AMENDMENTS
 NATIONAL FIRE PREVENTION CODE WITH INDIANA AMENDMENT
 - THE OWNER WILL OBTAIN APPROVAL FROM THE APPLICABLE AGENCIES LISTED ABOVE PRIOR TO INSTALLING, AT A LATER DATE ANY ELECTRICAL, MECHANICAL, OR PLUMBING SYSTEMS NOT IDENTIFIED IN THIS SUBMISSION.
 - INTERIOR FINISHES SHALL BE IN ACCORDANCE WITH CHAPTER 8 OF CURRENT IBC, AS MODIFIED BY THE STATE FIRE MARSHAL.
 - EXIT DOORS SHALL SWING IN THE DIRECTION OF EXIT TRAVEL AND SHALL NOT HAVE AN INSIDE KEY LOCK PER SEC. 1008.1 OF CURRENT IBC MODIFIED.
 - EXIT SIGNS SHALL BE PER SEC. 1011 OF CURRENT IBC MODIFIED.



FLOOR PLAN
SCALE: 1/16" = 1'-0"

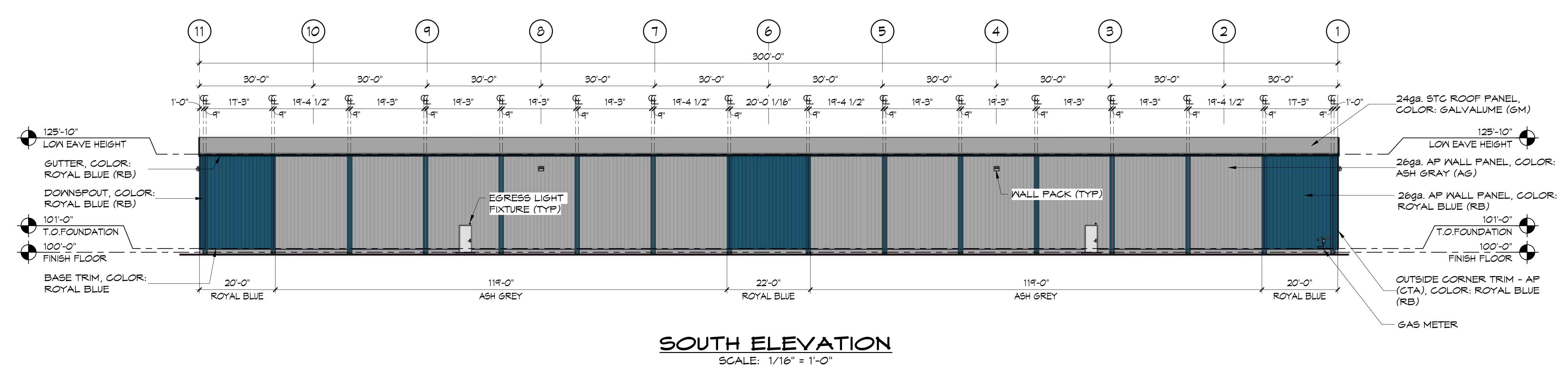
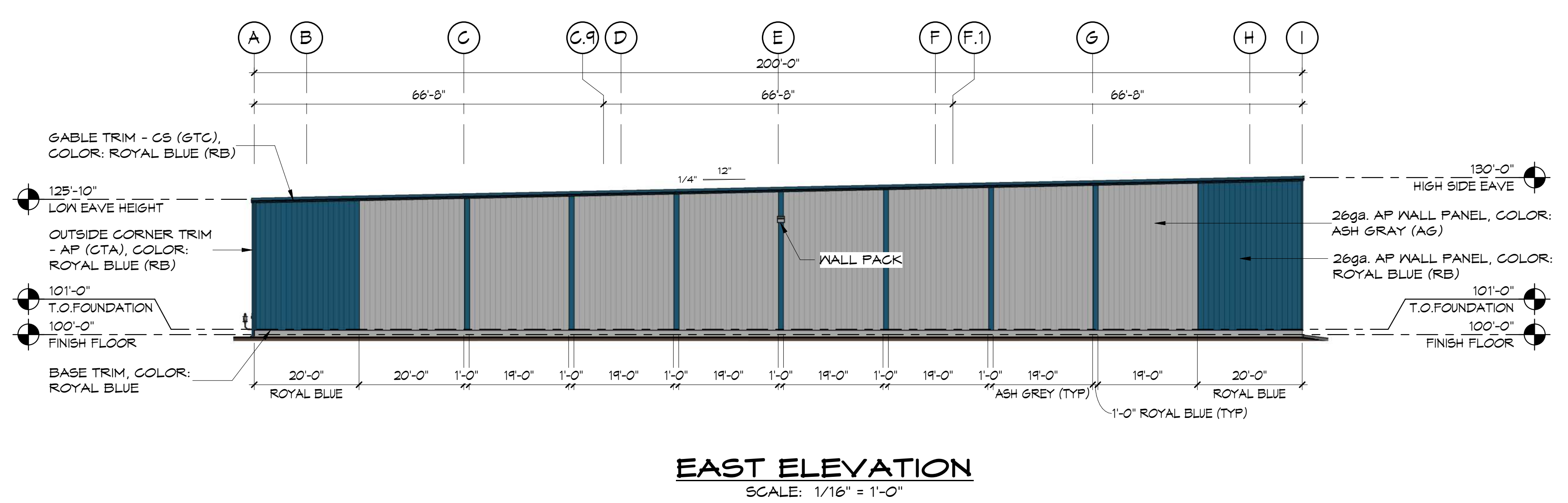
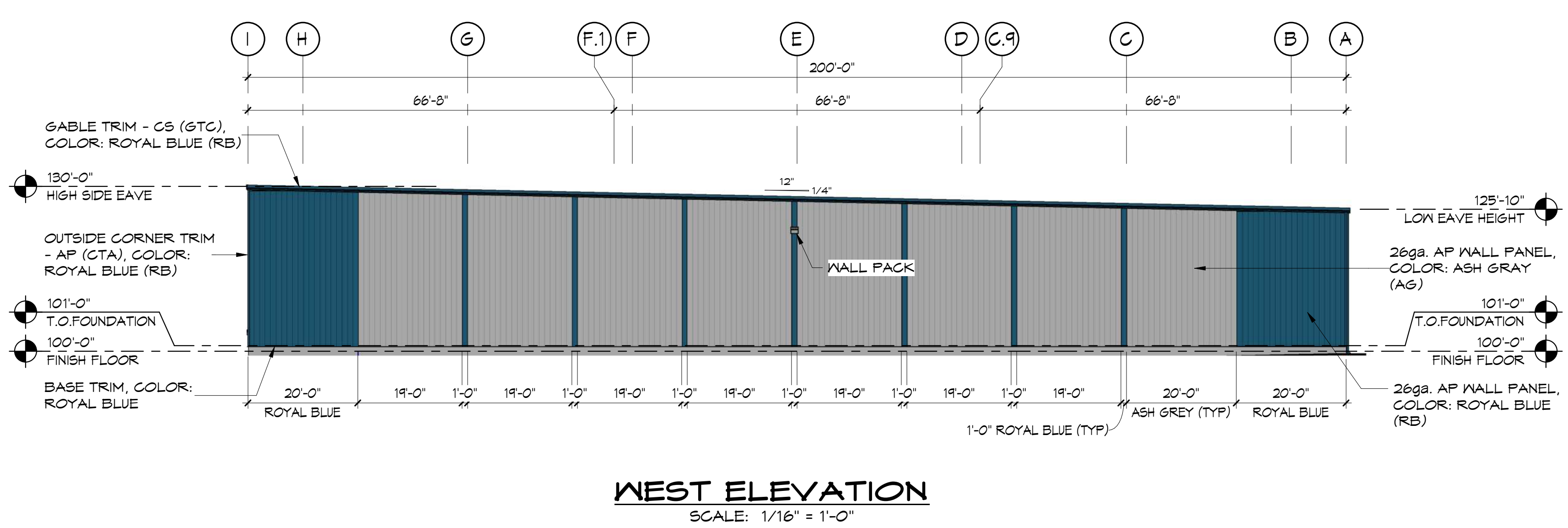
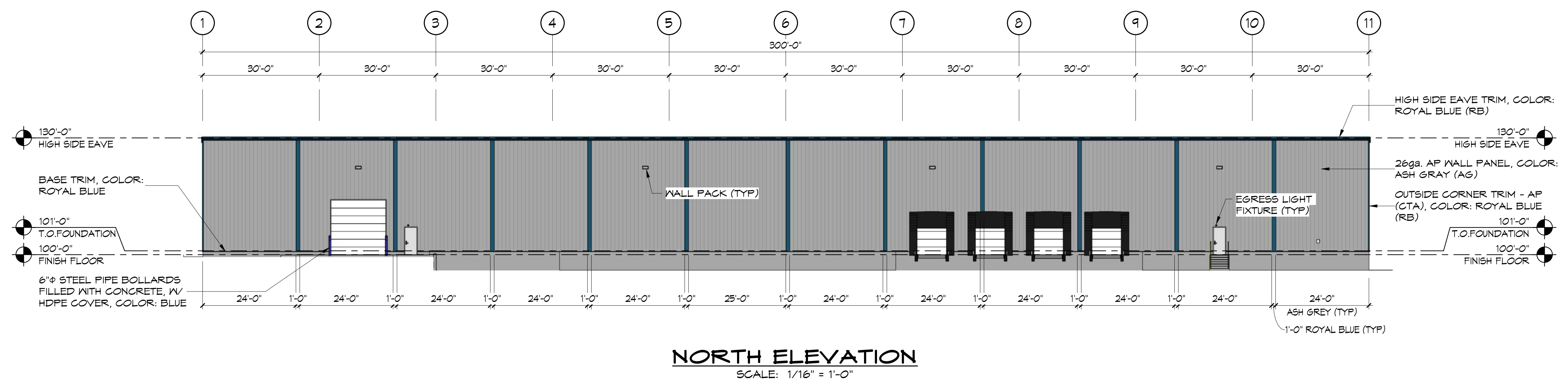


FLOOR PLAN
60,000 SF WAREHOUSE
HAGGERTY POINT FIVE
2160 PARK EAST BLVD., LAFAYETTE, INDIANA 47905

THIS ORIGINAL DESIGN IS THE SOLE PROPERTY OF TITAN CONSTRUCTION & ENGINEERING SERVICES CORPORATION. THE CONCEPT, IDEAS AND DETAILS HEREIN MAY NOT BE DISCLOSED TO, REPRODUCED OR USED BY ANY PERSON, FIRM OR ORGANIZATION WITHOUT PRIOR WRITTEN PERMISSION.

Reviewed by: **SG**
Approved by: **JEREMY RN**

Scale: As indicated
Date: 4/14/23
Job No: 23-089
Drawn By: RN
Sheet No: **A-101**



Sheet Title:	Exterior Elevations
Scale:	1/16" = 1'-0"
Job No.:	23-029
Date:	4/14/23
Drawn By:	RN
Sheet No.:	A-201
Project:	60,000 SF WAREHOUSE HAGGERTY POINT FIVE 2160 PARK EAST BLVD., LAFAYETTE, INDIANA 47905
Company:	TITAN CONSTRUCTION & ENGINEERING Bloomington, IN 47408

THIS ORIGINAL DESIGN IS THE SOLE PROPERTY OF TITAN CONSTRUCTION & ENGINEERING SERVICES CORPORATION. THE CONCEPT, IDEAS AND DETAILS HEREIN MAY NOT BE DISCLOSED TO, REPRODUCED OR USED BY ANY PERSON, FIRM OR ORGANIZATION WITHOUT PRIOR WRITTEN PERMISSION.

Reviewed by: **SG**
Approved by: **JEREMY RN**







2760













PRO·FORM













































LifeMaster

WARNING
Read the instructions carefully before using this product.
Do not use this product if you are unable to read the instructions.
Do not use this product if you are unable to understand the instructions.
Do not use this product if you are unable to follow the instructions.
Do not use this product if you are unable to understand the instructions.
Do not use this product if you are unable to follow the instructions.





ALLIED
HEATERS







EXIT

