

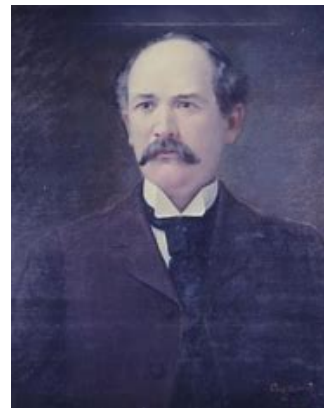
Known as the R. E. Longino Estate – Tree Farm, this property is a part of the historic Longino estate, dating back to the Louisiana Purchase and the formation of the Mississippi Territories in the early 1800's.

The area was initially settled by the Longino, Price, Kirby, Neal, and Williams families. Originally named "The Hall," changed to Silver Creek for a nearby stream in 1893. The Longino family has lived and farmed in what is now Silver Creek in Lawrence



County, MS, until the 1960s. The R.E. Longino – Tree Farm was established in the 1970s and currently encompassing approximately 641 acres across 7 parcels.

A bit of history, Andrew Houston Longino (May 16, 1854 – February 24, 1942) was an American politician from Mississippi who served as a Democrat in the Mississippi State Senate (1880–1884), the U.S. District Attorney's (1888–1890), and Governor's offices (1900–1904). Longino along with his 10 siblings were born in Silver Creek, in Lawrence County, Mississippi.



The property is perfect for a hunting camp and features income-producing timber in an ideal location for production. Silver Creek runs through part of the property, enhancing its natural beauty and utility.

This remarkable property, steeped in rich history and diverse landscapes, offers unparalleled recreational opportunities. An outdoor enthusiast's dream, it features a mix of mature hardwood

timber, including towering cedar and oak trees that drop an abundance of acorns in the fall, creating ideal conditions for whitetail deer and wild turkey hunting. A stream management zone has been established and maintained along the banks of Silver Creek. The lush, established food plots ensure year-round wildlife nutrition, attracting and sustaining wildlife throughout all seasons. Pine thickets further enrich the landscape, providing a variety of habitats for hunting and wildlife observation.

Located just off the east side of Hwy 43, the property includes the historic Longino cemetery in Section 5. Silver Creek flows through the eastern section, separating Section 5 from Sections 6 and 7. Additionally, Section 5 houses the abandoned railroad bed once operated by Pearl and Leaf Rivers Railroad, later known as Illinois Central Railroad. Ownership of the railroad bed has been transferred back to the Longino family, adding another layer of historical significance to this extraordinary property.