

12500 S. Stony Island, Chicago, IL Warehouse Complex

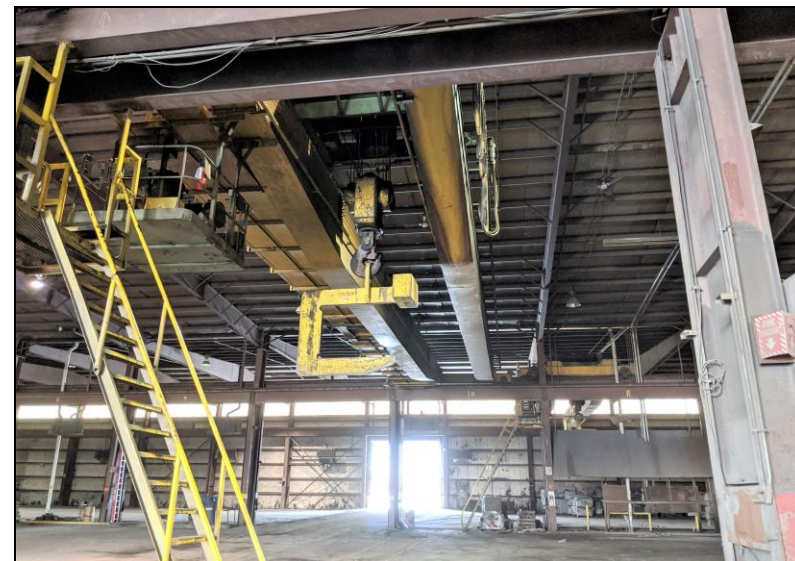


Building A



Building D

- 7 buildings on 18.2 acres
- Available for lease, separately or as a group
- Direct access to 1,400 SF of marine loading, 25.5' draft
- Rail loading available
- Abundant truck parking & outside storage
- Heavy industrial property with PD-8 zoning
- On land owned by the Port of Chicago



Building E

Rich Larson

312-337-4509 office

312-412-0163 mobile

rlarson@ctkcp.com

12500 S. Stony Island, Chicago, IL

Warehouse Complex



Individual Buildings	SF	Lease price	Ceiling height:	Bay size:	Docks	Drive-in doors	Power	Other
Building A-warehouse	59,400	\$6/SF	22'–29'	60 x 330		2	480/277V	24' wide x 14' high doors
Building B-warehouse	41,850	\$4/SF	18'–22'	70 x 250		4	480/277V	24' wide x 18' high doors
Building C-warehouse	21,600	\$5/SF	18'–20'			2	lights only	22' wide x 18 high doors
Building D-warehouse	60,000	\$4/SF	35'–39'			5	Heavy	16' wide x 18' high doors
Building E-crane building	129,600	\$8/SF	32'–36'		4 internal	3	480/277V	20' wide x 20' high doors, 800 SF office, two 20 ton cranes
Office/Scale	5,000	\$8/SF	9'					8 privates, breakroom, kitchen, dispatch
Maintenance/ Locker Room/Shop	5,250	\$6/SF	8'–16'			2	Heavy	13' wide x 12; high doors, breakroom, lockers

Rich Larson

312-337-4509 office

312-412-0163 mobile

rlarson@ctkcp.com

12500 S. Stony Island, Chicago, IL

Warehouse Complex



Rich Larson

312-337-4509 office

312-412-0163 mobile

rlarson@ctkcp.com

Above information is from sources believed reliable. No responsibility is taken for errors or omissions. Property is offered subject to change in status or withdrawal without notice 1659 W Hubbard, Chicago, IL