

# The Mill Shelbyville

405 N Harrison St, Shelbyville, IN 46176

2,271 SF Ground Floor + 1,329 sq ft Second Floor Office/Co-Working Opportunity



## Property Information

- + Total Square Footage - 3,600 SF
  - First Floor: 2,271 SF
  - Second Floor: 1,329 SF

## Property Summary

This former Coca-Cola bottling plant offers a rare chance to lease a character-filled, two story commercial space in the heart of Shelbyville.

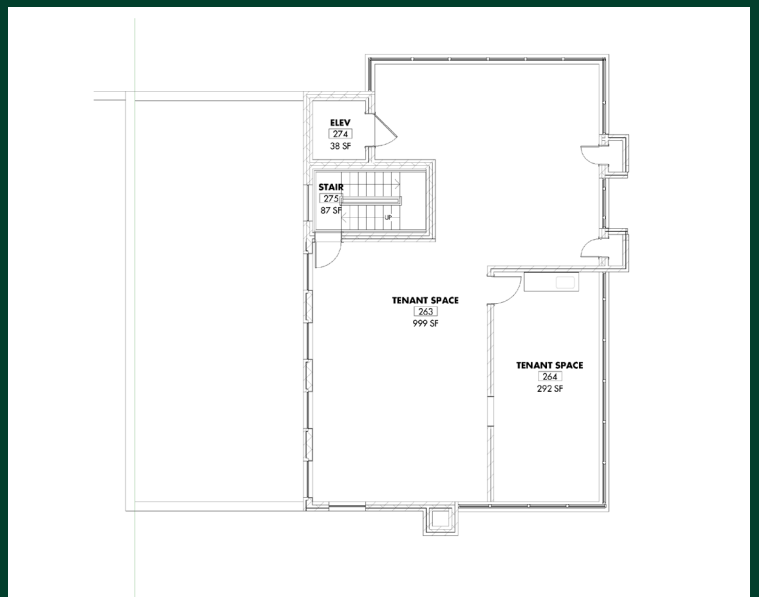
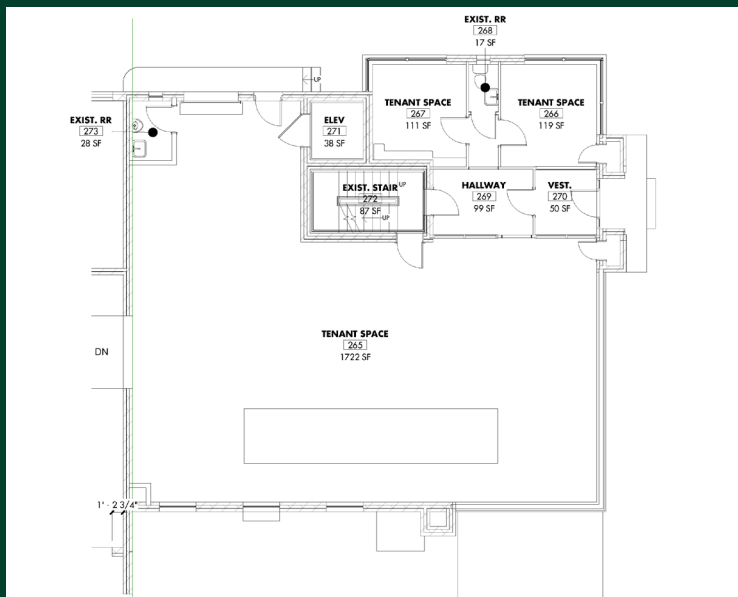
Located on N. Harrison St with an outdoor patio, the building is perfect for restaurants, bars, and coffee shops seeking a memorable destination atmosphere. With its blend of authentic and flexible layout offers a unique opportunity for a space looking to stand out and create experiences.

## Demographics

	1 Mile Radius	3 Mile Radius	5 Mile Radius
Population	8,142	23,177	25,433
Households	3,345	9,491	10,422
Household Income	\$69,464	\$78,856	\$81,930
Daytime Population	8,160	26,025	29,545

## Traffic Counts

	VPD
SR 9	22,311
SR 44	20,439



## Contact Us

### Diana Zagarzhevskiy

Vice President  
+1 317 518 6257  
diana.zagarzhevskiy@cbre.com

### Jaxon Stutz

Associate  
+1 317 832 8939  
jaxon.stutz@cbre.com

### CBRE Indianapolis

8888 Keystone Crossing  
+1 317 269 1000  
Suite 1000 | Indianapolis, IN

© 2025 CBRE, Inc. All rights reserved. This information has been obtained from sources believed reliable, but has not been verified for accuracy or completeness. You should conduct a careful, independent investigation of the property and verify all information. Any reliance on this information is solely at your own risk. CBRE and the CBRE logo are service marks of CBRE, Inc. All other marks displayed on this document are the property of their respective owners, and the use of such logos does not imply any affiliation with or endorsement of CBRE. Photos herein are the property of their respective owners. Use of these images without the express written consent of the owner is prohibited.