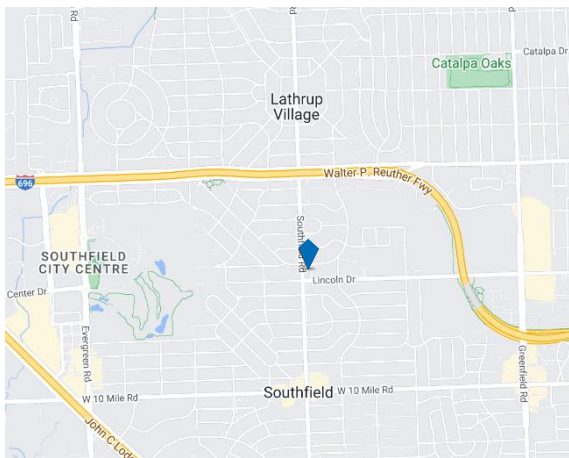


FOR SALE OR LEASE

26060 Southfield Road

Lathrup Village, MI 48076



FOR SALE OR LEASE

- 15,492 Square Feet
- 2,553 - 5,733 SF of space available with direct parking lot access
- Under new ownership and professional management
- Great medical, professional office or retail use
- Direct access to Southfield Road with quick access to I-696, I-75 and I-96
- Over \$100K in new capital expenditures including new parking lot
- 39% leased by national tenant with over 7 years remaining on lease

For information, please contact:

Jack Bergmann

Associate

t 248-357-6569

Jack.Bergmann@nrmk.com

Wade Lorimer

Associate

t 248-357-2508

Wade.Lorimer@nrmk.com

Daniel Canvasser

Executive Managing Director

t 248-350-8141

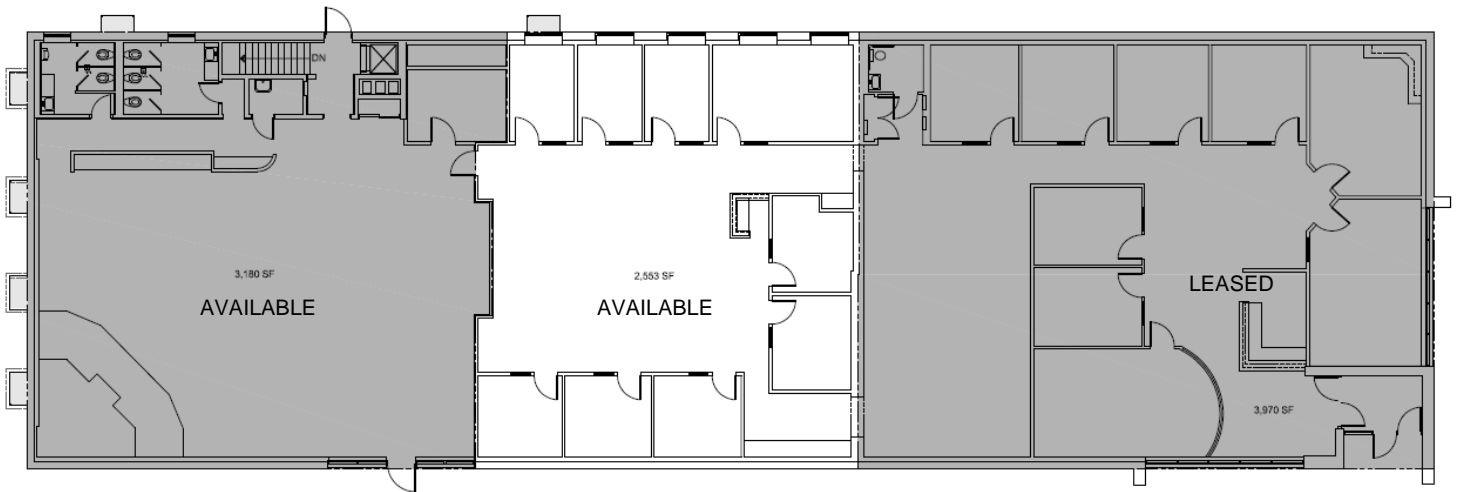
Daniel.Canvasser@nrmk.com

27725 Stansbury Blvd, Suite 300,
Farmington Hills, MI 48334

nrmk.com

NEWMARK

The information contained herein has been obtained from sources deemed reliable but has not been verified and no guarantee, warranty or representation, either express or implied, is made with respect to such information. Terms of sale or lease and availability are subject to change or withdrawal without notice.



CONTACT

Jack Bergmann

Associate

t 248-357-6569

Jack.Bergmann@nrmk.com

Wade Lorimer

Associate

t 248-357-2508

Wade.Lorimer@nrmk.com

Daniel Canvasser

Executive Managing Director

t 248-350-8141

Daniel.Canvasser@nrmk.com

27725 Stansbury Blvd, Suite 300,
Farmington Hills, MI 48334

nrmk.com