



SALE PRICE

\$1,100,000

CONTACT US

Rox Pollard Jr.

Vice President
+1 803 401 4242
rox.pollard@colliers.com

John Gressette

Senior Brokerage Associate
+1 803 401 4233
john.gressette@colliers.com

FOR SALE

±10-acre development site adjacent to Walmart in Newberry

2900 Main Street | Newberry, SC

Copyright © 2025 Colliers International. Information herein has been obtained from sources deemed reliable, however its accuracy cannot be guaranteed. The user is required to conduct their own due diligence and verification.

Colliers | South Carolina

1301 Gervais Street, Ste 600
Columbia, SC 29201
+1 803 254 2300

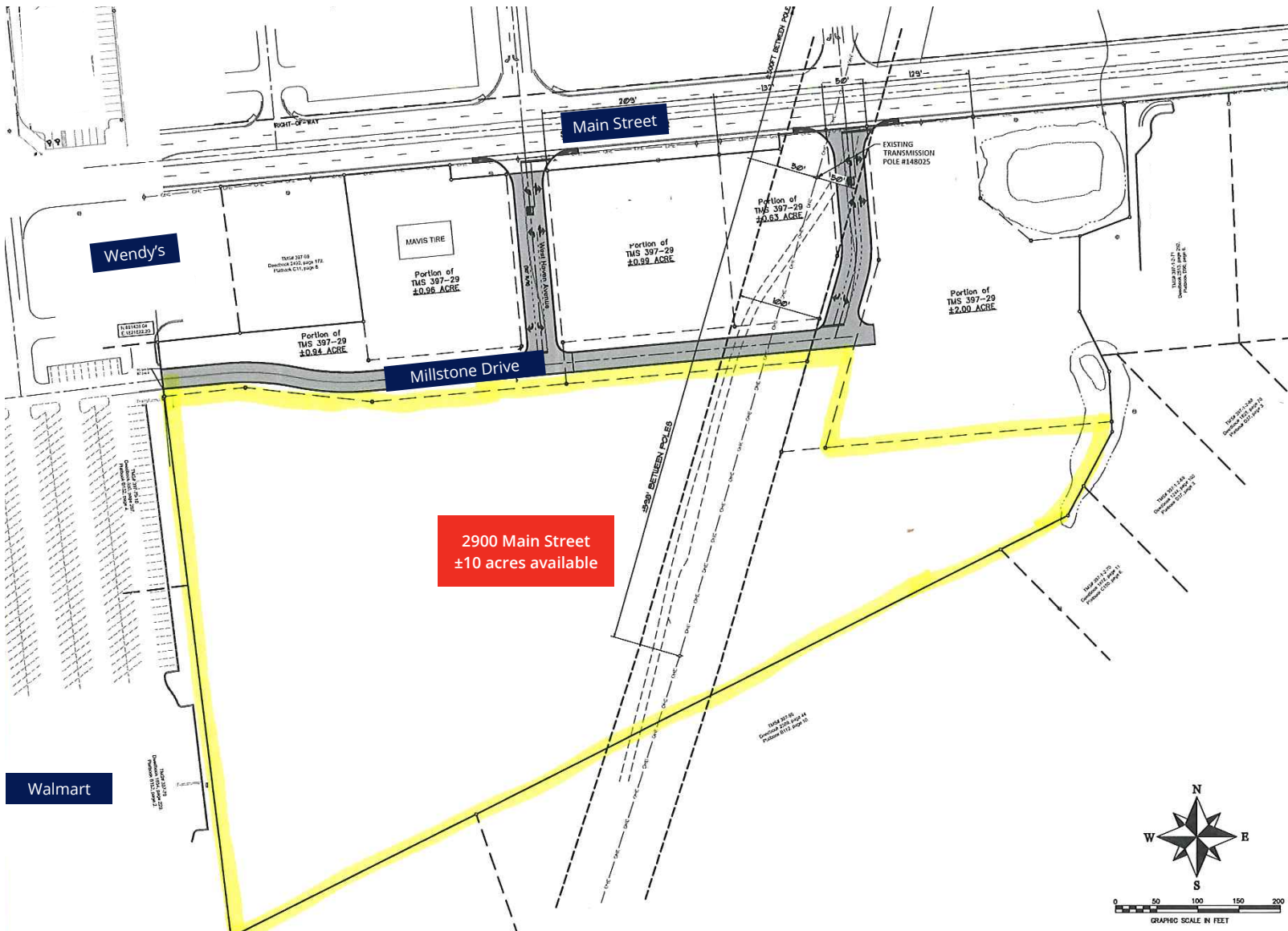
Colliers

2900 Main Street

Newberry, SC

HIGHLIGHTS

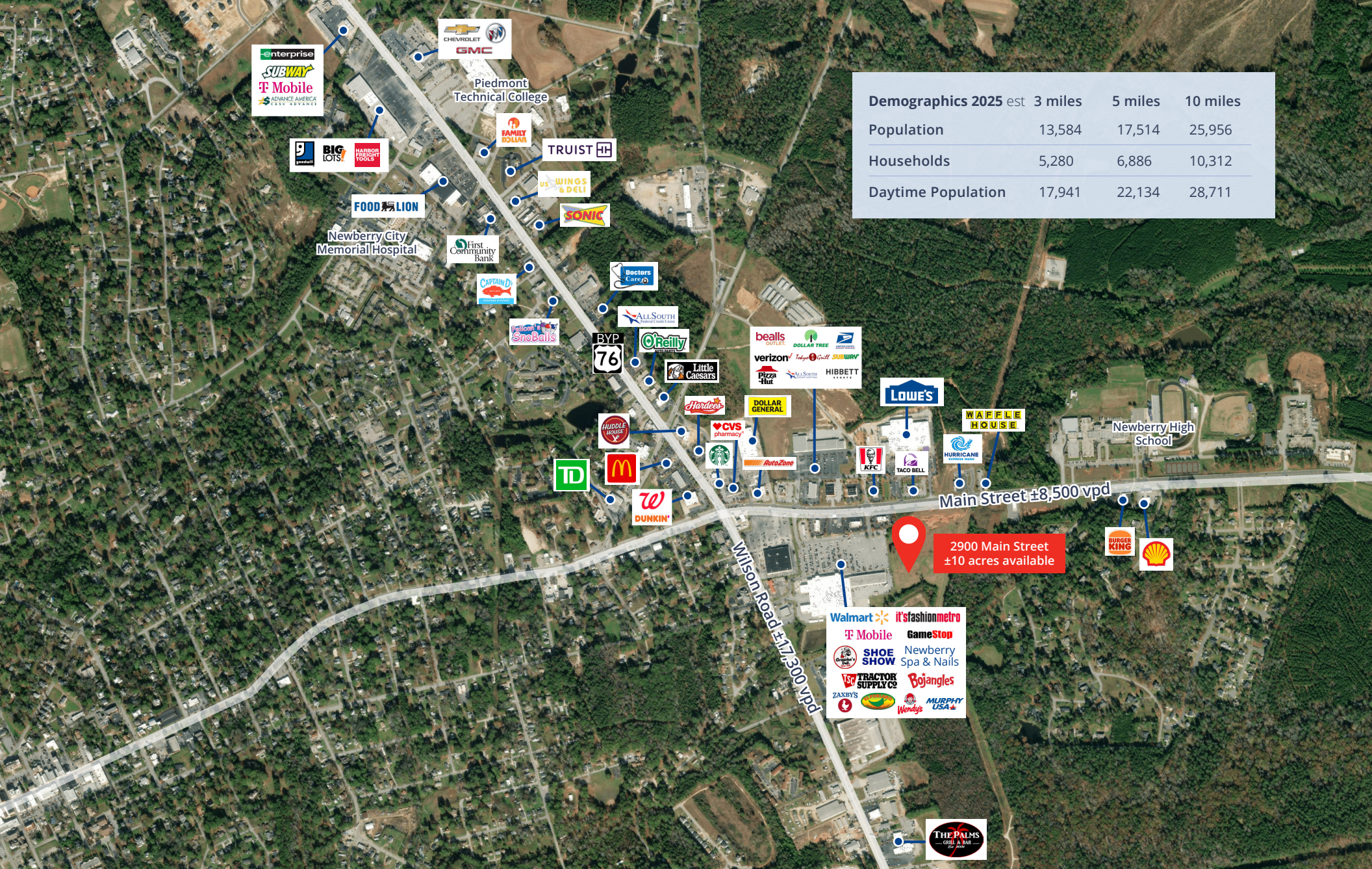
- ±10 acres of commercial land located directly adjacent to Walmart Supercenter
- Ideal grocery/retail development site
- Tax ID: 397-29 (portion)
- Zoning: Commercial



Millstone Drive Progress

Newberry, SC





Demographics 2025 est	3 miles	5 miles	10 miles
Population	13,584	17,514	25,956
Households	5,280	6,886	10,312
Daytime Population	17,941	22,134	28,711

Rox Pollard Jr.
 Vice President
 +1 803 401 4242
 rox.pollard@colliers.com

John Gressette
 Senior Brokerage Associate
 +1 803 401 4233
 john.gressette@colliers.com

Colliers | South Carolina
 1301 Gervais Street, Ste 600
 Columbia, SC 29201
 +1 803 254 2300

