

BENSALEM PROFESSIONAL PLAZA

3237 Bristol Road, Bensalem, PA 19020

-  FOR LEASE
-  OFFICE
-  FOUR SUITES



PROPERTY DESCRIPTION

- First Floor Availability: Suite 100/101 - 4,030 SF
- Second Floor Availabilities: Suite 202 - 1,120 SF and Suite 203/204 - 3,700 SF
- Attractive, elevator served building consisting of multiple private offices, open areas, waiting areas, conference room, kitchenette and plenty of parking
- 2 miles to US Route 1/Lincoln Highway, PA Turnpike & Neshaminy Mall; 5 miles to I-95/I-295
- Close proximity to shopping, restaurants, bank and hotels

LEASE RATE:

\$18.00 SF/YR GROSS + UTILITIES

FOR MORE INFORMATION

Zena Charokopos

 215.396.2900 x103

 zena.charokopos@naimertz.com


David Russo

 215.359.7524

 david.russo@naimertz.com

NAI MERTZ DISCLAIMER: NO WARRANTY OR REPRESENTATION, EXPRESS OR IMPLIED, IS MADE AS TO THE ACCURACY OF THE INFORMATION CONTAINED HEREIN, AND THE SAME IS SUBMITTED SUBJECT TO ERRORS, OMISSIONS, CHANGE OF PRICE, RENTAL OR OTHER CONDITIONS, PRIOR SALE, LEASE OR FINANCING, OR WITHDRAWAL WITHOUT NOTICE, AND OF ANY SPECIAL LISTING CONDITIONS IMPOSED BY OUR PRINCIPALS NO WARRANTIES OR REPRESENTATIONS ARE MADE AS TO THE CONDITION OF THE PROPERTY OR ANY HAZARDS CONTAINED THEREIN ARE ANY TO BE IMPLIED. OUTLINES ARE APPROXIMATE AND SHOWN ONLY TO IDENTIFY THE PARCEL IN CONSIDERATION.

NAI Mertz

 **NAI Mertz** | 210 E. Street Road, Suite 3B
Feasterville-Trevese, PA 19053
215-396-2900 | naimertz.com



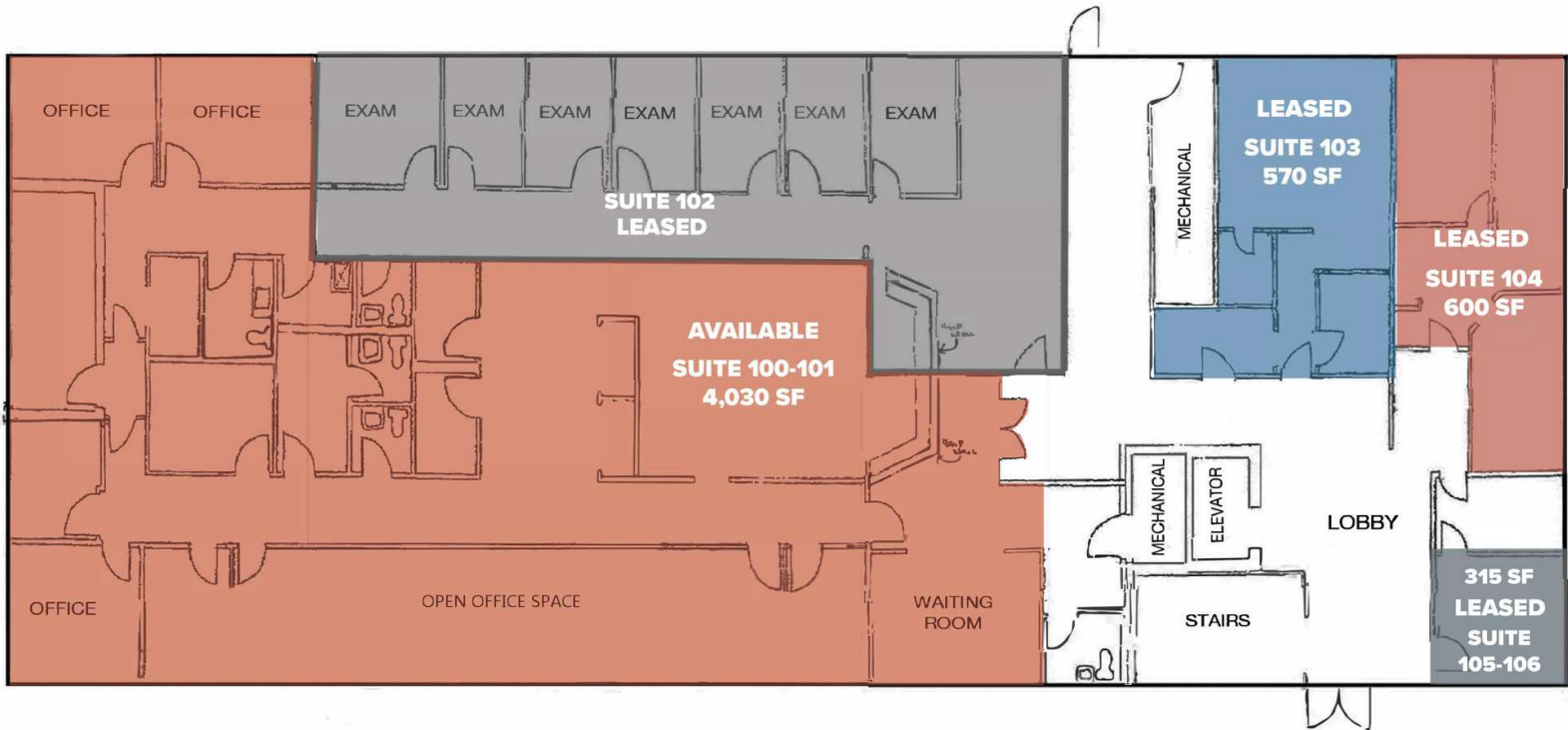
BENSALEM PROFESSIONAL PLAZA

First Floor Availabilities

 FOR LEASE

 OFFICE

 FOUR SUITES



FOR MORE INFORMATION

Zena Charokopos

 215.396.2900 x103


 zena.charokopos@naimertz.com

David Russo

 215.359.7524

 david.russo@naimertz.com

NAIMertz

 **NAI Mertz** | 210 E. Street Road, Suite 3B
Feasterville-Trevese, PA 19053
215-396-2900 | naimertz.com

NAI MERTZ DISCLAIMER: NO WARRANTY OR REPRESENTATION, EXPRESS OR IMPLIED, IS MADE AS TO THE ACCURACY OF THE INFORMATION CONTAINED HEREIN, AND THE SAME IS SUBMITTED SUBJECT TO ERRORS, OMISSIONS, CHANGE OF PRICE, RENTAL OR OTHER CONDITIONS, PRIOR SALE, LEASE OR FINANCING, OR WITHDRAWAL WITHOUT NOTICE, AND OF ANY SPECIAL LISTING CONDITIONS IMPOSED BY OUR PRINCIPALS NO WARRANTIES OR REPRESENTATIONS ARE MADE AS TO THE CONDITION OF THE PROPERTY OR ANY HAZARDS CONTAINED THEREIN ARE ANY TO BE IMPLIED. OUTLINES ARE APPROXIMATE AND SHOWN ONLY TO IDENTIFY THE PARCEL IN CONSIDERATION.



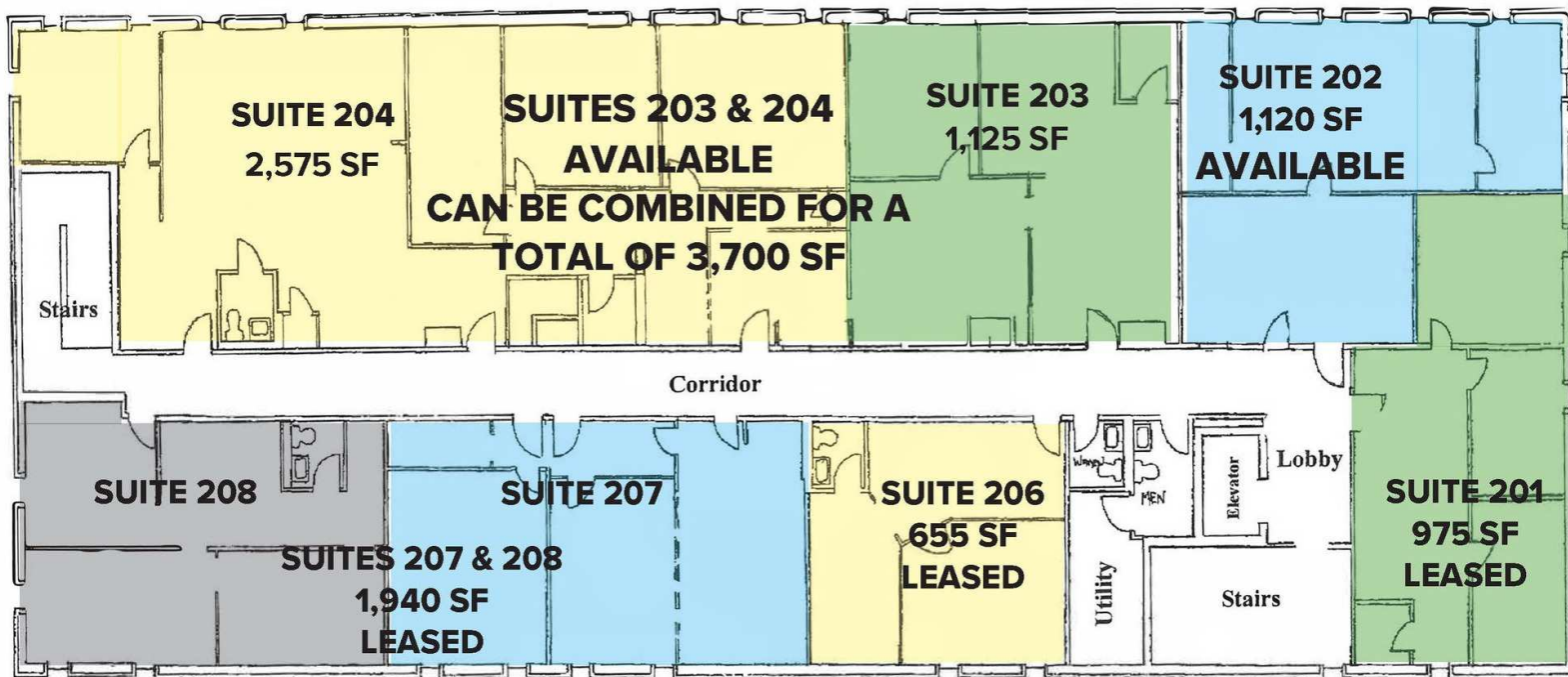
BENSALEM PROFESSIONAL PLAZA

Second Floor Availabilities

 FOR LEASE

 OFFICE

 4 SUITES



FOR MORE INFORMATION

Zena Charokopos

 215.396.2900 x103


 zena.charokopos@naimertz.com

David Russo

 215.359.7524

 david.russo@naimertz.com

NAIMertz

 **NAI Mertz** | 210 E. Street Road, Suite 3B
Feasterville-Trevese, PA 19053
215-396-2900 | naimertz.com

NAI MERTZ DISCLAIMER: NO WARRANTY OR REPRESENTATION, EXPRESS OR IMPLIED, IS MADE AS TO THE ACCURACY OF THE INFORMATION CONTAINED HEREIN, AND THE SAME IS SUBMITTED SUBJECT TO ERRORS, OMISSIONS, CHANGE OF PRICE, RENTAL OR OTHER CONDITIONS, PRIOR SALE, LEASE OR FINANCING, OR WITHDRAWAL WITHOUT NOTICE, AND OF ANY SPECIAL LISTING CONDITIONS IMPOSED BY OUR PRINCIPALS NO WARRANTIES OR REPRESENTATIONS ARE MADE AS TO THE CONDITION OF THE PROPERTY OR ANY HAZARDS CONTAINED THEREIN ARE ANY TO BE IMPLIED. OUTLINES ARE APPROXIMATE AND SHOWN ONLY TO IDENTIFY THE PARCEL IN CONSIDERATION.



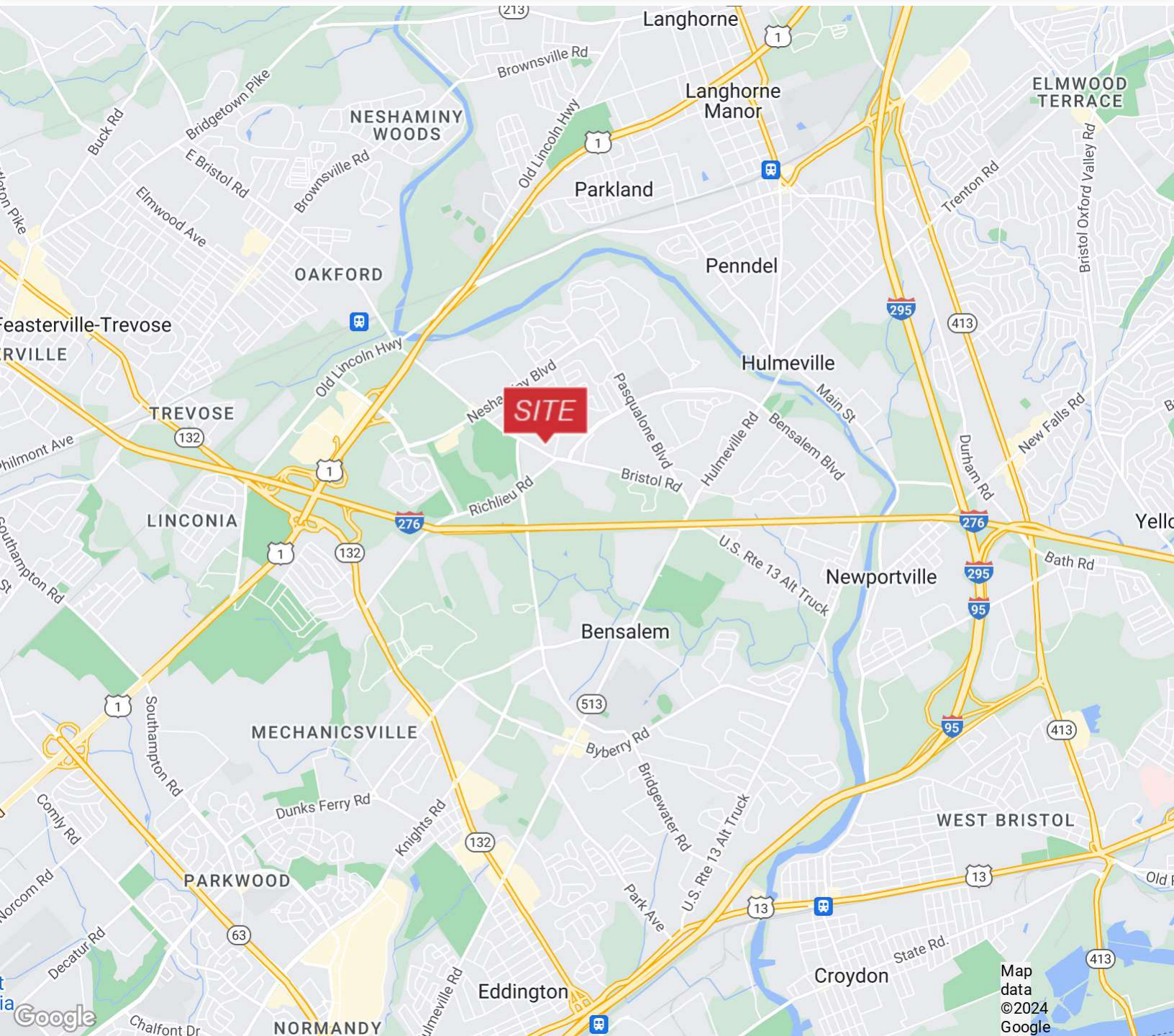
BENSALEM PROFESSIONAL PLAZA

3237 Bristol Road, Bensalem, PA 19020

 FOR LEASE

 OFFICE

 4 SUITES



FOR MORE INFORMATION

Zena Charokopos

 215.396.2900 x103


 zena.charokopos@naimertz.com

David Russo

 215.359.7524

 david.russo@naimertz.com

NAIMertz

 NAI Mertz | 210 E. Street Road, Suite 3B
Feasterville-Trevoze, PA 19053
215-396-2900 | naimertz.com

NAI MERTZ DISCLAIMER: NO WARRANTY OR REPRESENTATION, EXPRESS OR IMPLIED, IS MADE AS TO THE ACCURACY OF THE INFORMATION CONTAINED HEREIN, AND THE SAME IS SUBMITTED SUBJECT TO ERRORS, OMISSIONS, CHANGE OF PRICE, RENTAL OR OTHER CONDITIONS, PRIOR SALE, LEASE OR FINANCING, OR WITHDRAWAL WITHOUT NOTICE, AND OF ANY SPECIAL LISTING CONDITIONS IMPOSED BY OUR PRINCIPALS. NO WARRANTIES OR REPRESENTATIONS ARE MADE AS TO THE CONDITION OF THE PROPERTY OR ANY HAZARDS CONTAINED THEREIN ARE ANY TO BE IMPLIED. OUTLINES ARE APPROXIMATE AND SHOWN ONLY TO IDENTIFY THE PARCEL IN CONSIDERATION.

