



CORPORATE CAMPUS FOR SALE

- Two (2) Building Campus Setting
- **Approximately 185,456 SF**
- Near Melbourne International Airport
- **+/- 600 On-Site Parking Spaces**
- New Furniture & Fixtures
- **Great Central Brevard County Location**



150 S. Wickham Rd. **Melbourne**, Florida



LIGHTLE
BECKNER
ROBISON

« INCORPORATED »

COMMERCIAL REAL ESTATE SERVICES



THREE BUILDING CAMPUS



Headquarter Building
3-Story, 143,880 SF
(WICKHAM 3)



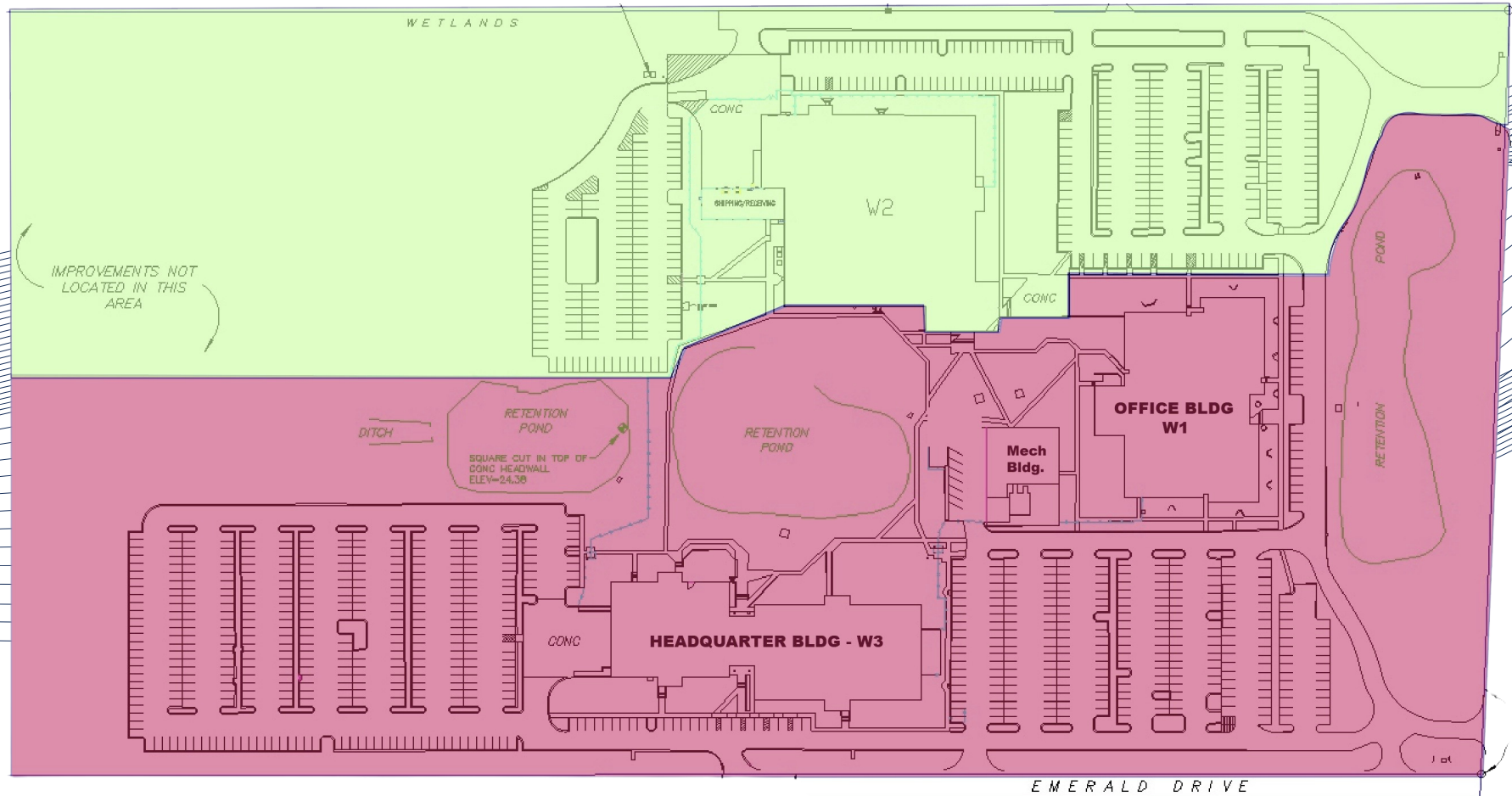
Central Mechanical Plant
(Shared by both Buildings)
6,491 SF



Office Building
1-Story, 41,576 SF
(WICKHAM 1)

150 S. Wickham Rd. **Melbourne**, Florida

SITE PLAN

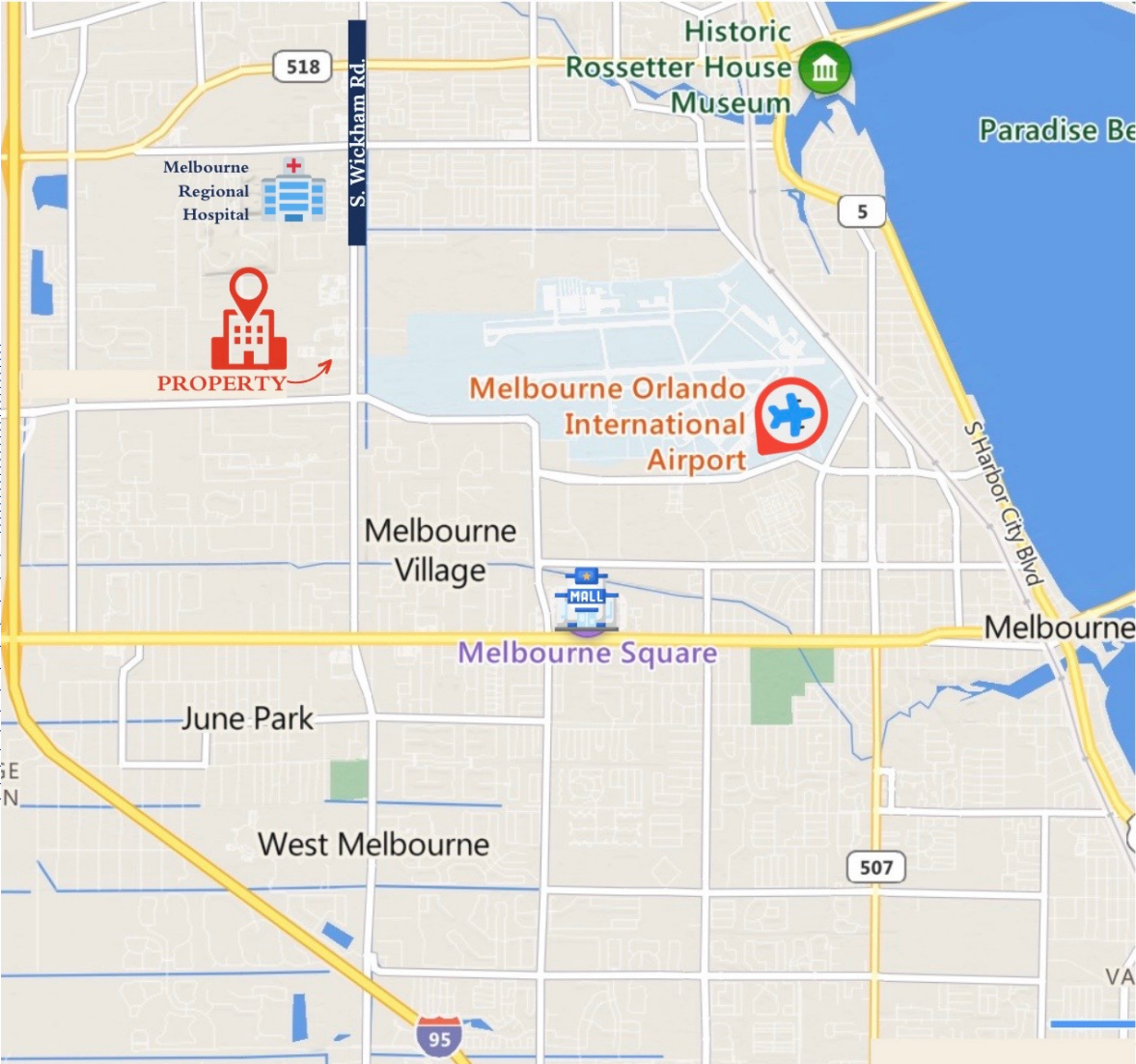


CONCEPTUAL SUBDIVISION PLAN

 AVAILABLE

150 S. Wickham Rd. **Melbourne**, Florida

MAP



150 S. Wickham Rd. **Melbourne**, Florida



Wickham 3

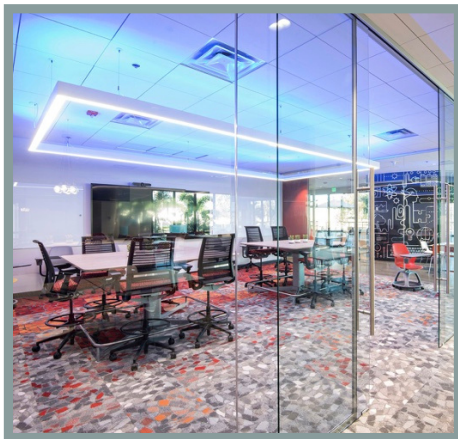




BUILDING SPECS.

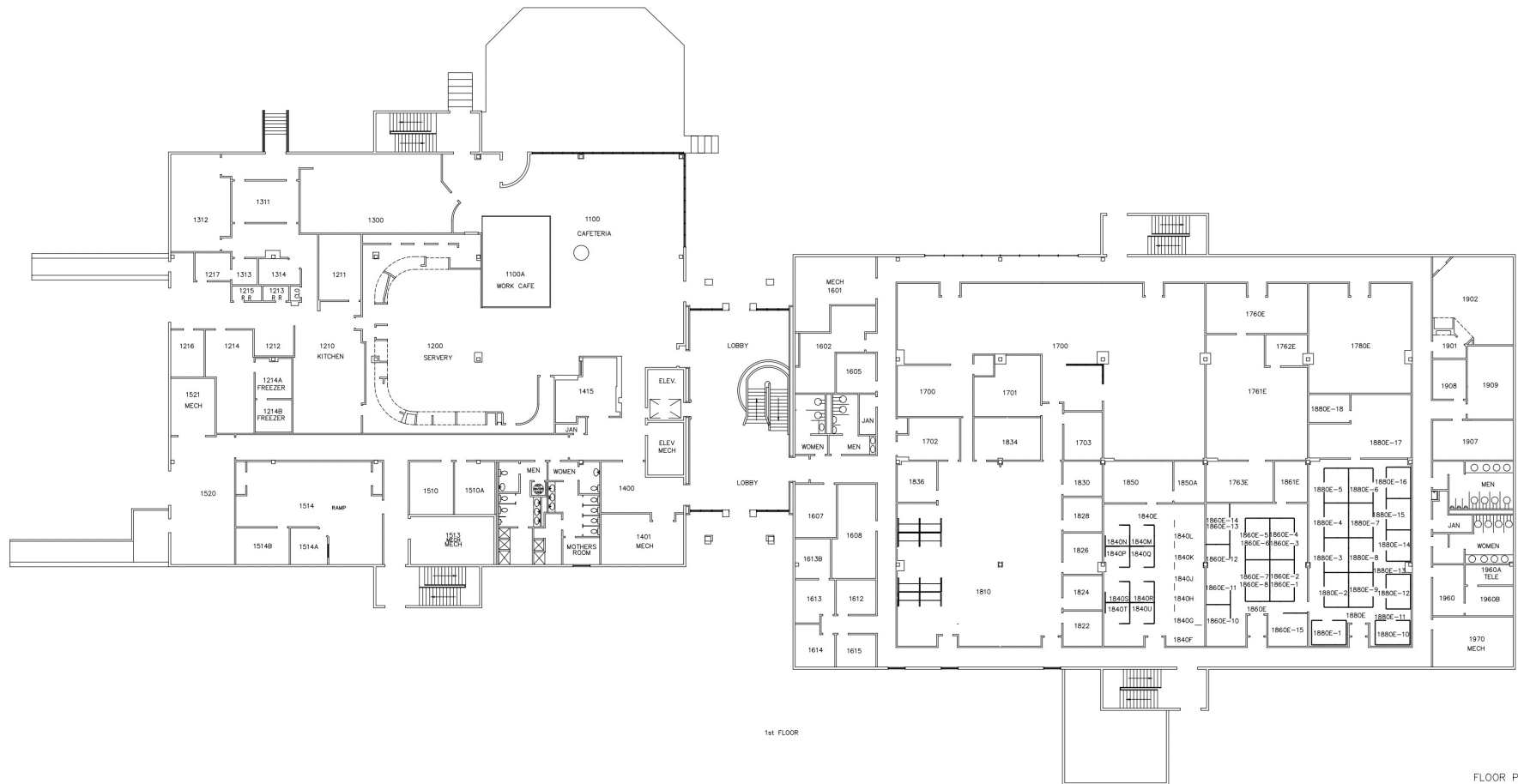
Headquarter Building Wickham 3

- 3-story building, +/-143,880 SF
- Corporate building with executive wing
- Fully furnished & ready for occupancy
- Planned for +/-420 seats
- Grand reception area
- Full commercial kitchen and cafeteria
- Loading dock with roll-up door
- Designated parking
- Raised floor Data Center



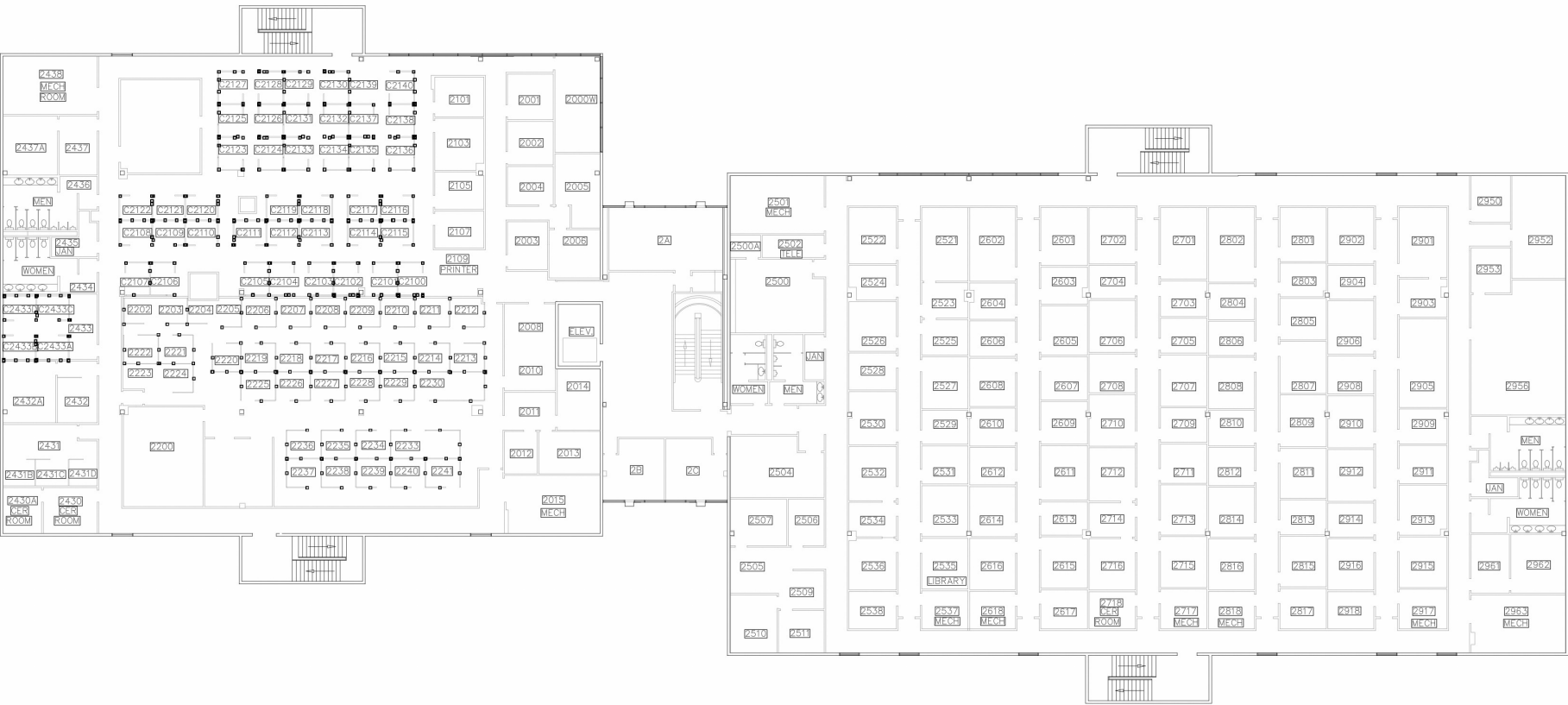
BUILDING LAYOUT

Headquarter Building Wickham 3 - FIRST FLOOR



BUILDING LAYOUT

Headquarter Building Wickham 3 - SECOND FLOOR

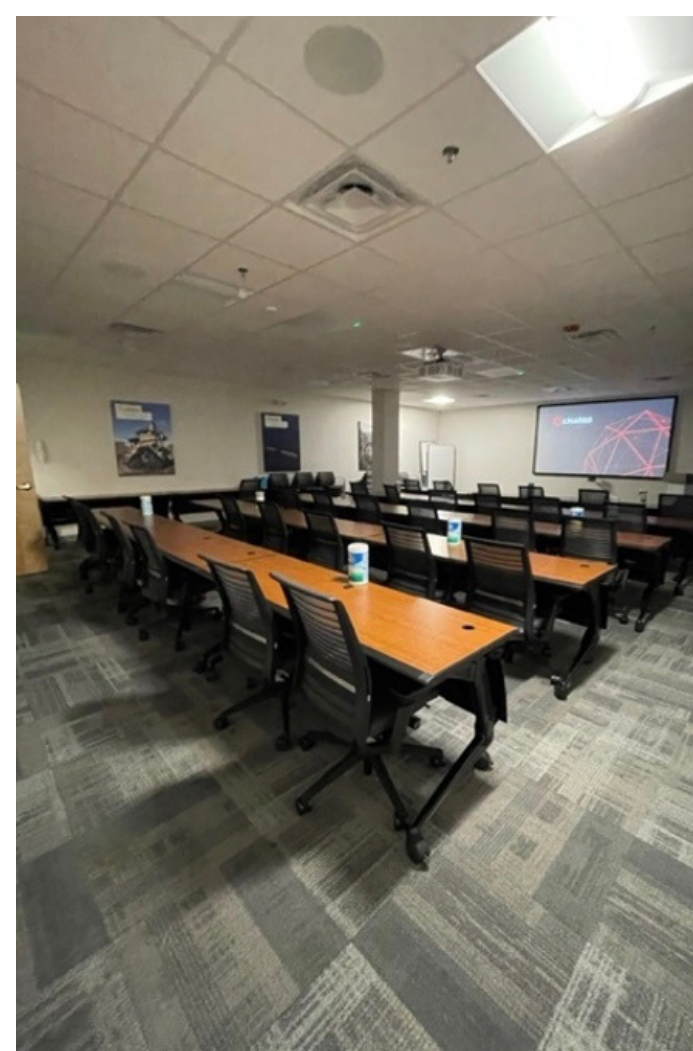


WICKHAM THREE 2nd FLOOR

FLOOR PLAN
REVISED 01/22/20



Wickham 1





BUILDING SPECS.

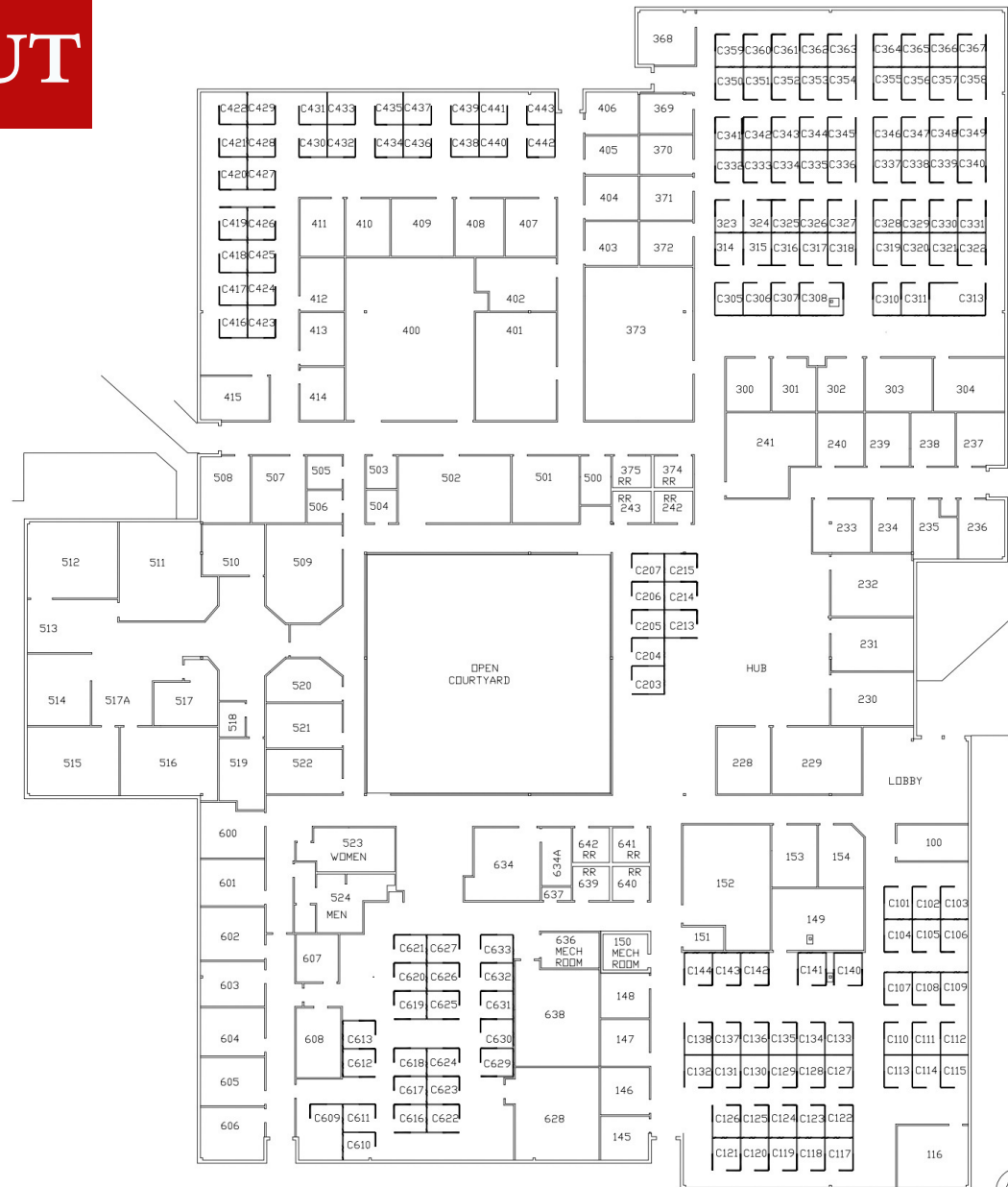
OFFICE BUILDING -Wickham 1

- 1-story, +/- 41, 576 SF
- Great central Brevard location
- Building fronting Wickham Road
- Center Atrium allows lots of natural light
- Interior recently renovated
- Fully furnished, ready for occupancy
- Seating for +/-225 employees
- Dedicated parking



BUILDING LAYOUT

Office Building Wickham 1



SHARED MECHANICAL

- Located in the center of the Campus
- Contains, Shop, Office, Break Area and Bathroom
- Houses all major mechanical equipment for this Corporate Campus
- Power Distribution
- Chilled Water Systems
- Loading bays with roll-up doors



Contact:



Lightle Beckner Robison
Rob Beckner
(321) 863-3226
Rob@TeamLBR.com



Jones Lang Lasalle
Jeff Groh
(703) 485-8833
Jeff.Groh@JLL.com